



INSTRUCTIONS

J06399

2024-01-12



FRONT AXLE COVER ADAPTER KIT

GENERAL INFORMATION

Table 1. General Information

Kits	Suggested Tools	Skill Level ⁽¹⁾
43000090, 43000159	Safety Glasses, Torque Wrench	
(1) Tightening to torque value or other moderate tools and techniques required		

KIT CONTENTS

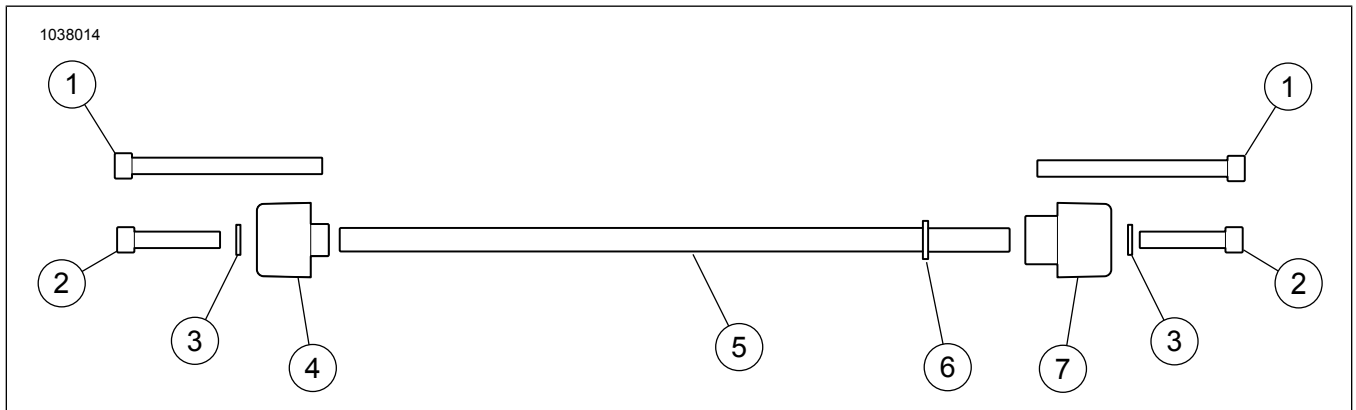


Figure 1. Kit Contents: Front Axle Cover Adapter Kit

Table 2. Kit Contents: Front Axle Cover Adapter Kit

Verify that all contents are present in the kit before installing or removing items from vehicle.					
<input checked="" type="checkbox"/>	Item	Qty	Description	Part No.	Notes
<input type="checkbox"/>	1	2	Screw, long	885A	Kit 43000090
<input type="checkbox"/>		1	Screw, long	885A	Kit 43000159
<input type="checkbox"/>	2	2	Screw, screw	3601	Kit 43000090
<input type="checkbox"/>		1	Screw, screw	3601	Kit 43000159
<input type="checkbox"/>	3	2	Washer	6099	
<input type="checkbox"/>	4	1	Right base	Not sold Separately	Kit 43000090
<input type="checkbox"/>		1	Right base with top notch	Not sold Separately	Kit 43000159
<input type="checkbox"/>	5	1	Threaded rod	Not sold Separately	
<input type="checkbox"/>	6	1	O-ring	11301	
<input type="checkbox"/>	7	1	Left base	Not sold Separately	Kit 43000090
<input type="checkbox"/>		1	Left base with top notch	Not sold Separately	Kit 43000159

Table 3. Model Specific Screw Requirements

Kit	Model	Right	Left
Kit 43000090	FXBB	Short	Short
	FXLR	Short	Short
	FLSL	Long	Short
	FLDE	Long	Short
	FXBR/S	Long	Short
	FLHC/S	Long	Short
	FLFB/S	Long	Long
Kit 43000159	FXFB/S	Short	Long
	FXDR/S	Short	Long
	FXLRS	Short	Long
	FXLRST	Short	Long
	FLSB	Short	Long

GENERAL

Models

For model fitment information, see the Parts and Accessories (P&A) Retail Catalog or the Parts and Accessories section of www.harley-davidson.com.

Verify that the most current version of the instruction sheet is used. It is available at: h-d.com/isheets

Contact Harley-Davidson Customer Support Center at 1-800-258-2464 (U.S. only) or 1-414-343-4056.

Installation Requirements

⚠ WARNING

Rider and passenger safety depend upon the correct installation of this kit. Use the appropriate service manual procedures. If the procedure is not within your capabilities or you do not have the correct tools, have a Harley-Davidson dealer perform the installation. Improper installation of this kit could result in death or serious injury. (00333b)

NOTE

This instruction sheet references service manual information. A service manual for the year and model motorcycle is required for this installation and is available from:

- A Harley-Davidson dealer.
- H-D Service Information Portal, a subscription-based access available for most 2001 and newer models. For more information see *Frequently ask questions about subscriptions*.

Proper installation of this kit requires:

- Separate purchase of threadlocker is required. LOCTITE 243 MEDIUM STRENGTH THREADLOCKER AND SEALANT (BLUE) (99642-97)

INSTALL

1. See Figure 2. Apply threadlocker to screw threads (1, 7) prior to assembly.

Consumable: LOCTITE 243 MEDIUM STRENGTH THREADLOCKER AND SEALANT (BLUE) (99642-97)

- a. For model and screw requirements Refer to Table 3.

2. Pre-assemble right side of adaptor kit.

- a. Install screw (1) through washer (2), right base (3), and thread into threaded rod (4) until snug.
- b. For Kit 43000159, right base (3) has a notch at top that needs to be aligned with the fork down tube.

3. Install O-ring (5) one inch from the left end of the threaded rod (4).

4. Insert adaptor kit into axle from the right side.

NOTE

Slight gap between left base (6) and fork slider is normal once installed.

5. Install screw (7) through washer (2) and left base (6) while holding right side. Tighten.

Torque: 11.3 N·m (100 in-lbs)

- a. For Kit 43000159, left base (6) has a notch at top that needs to be aligned with the fork down tube.

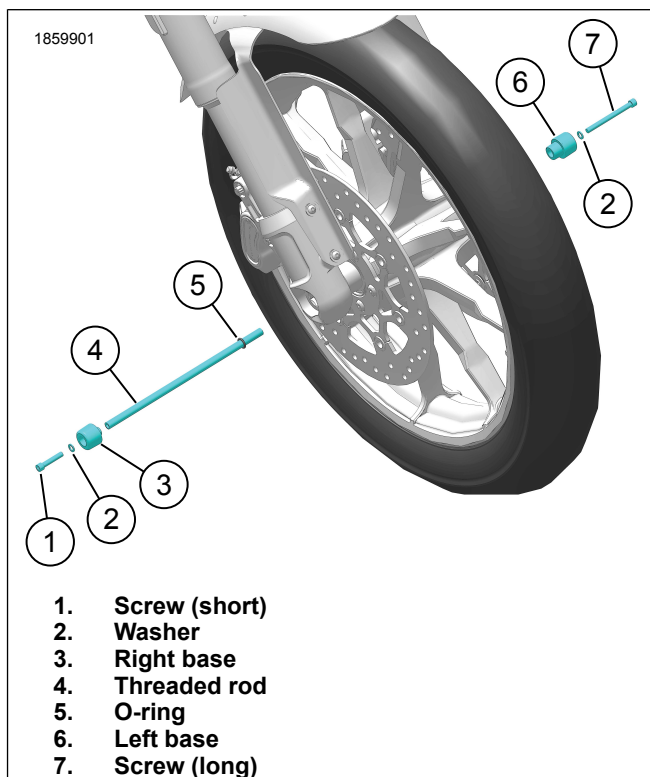


Figure 2. FXLRS Wheel Shown (Typical)