



# INSTRUCTIONS

94100621

2024-01-01



## REVOLUTION MAX CHARGING SYSTEM SERVICE KIT

### GENERAL INFORMATION

Table 1. General Information

Kits	Suggested Tools	Skill Level <sup>(1)</sup>
29900143, 29900144	Safety Glasses, Torque Wrench	
(1) Tightening to torque value or other moderate tools and techniques required		

### KIT CONTENTS

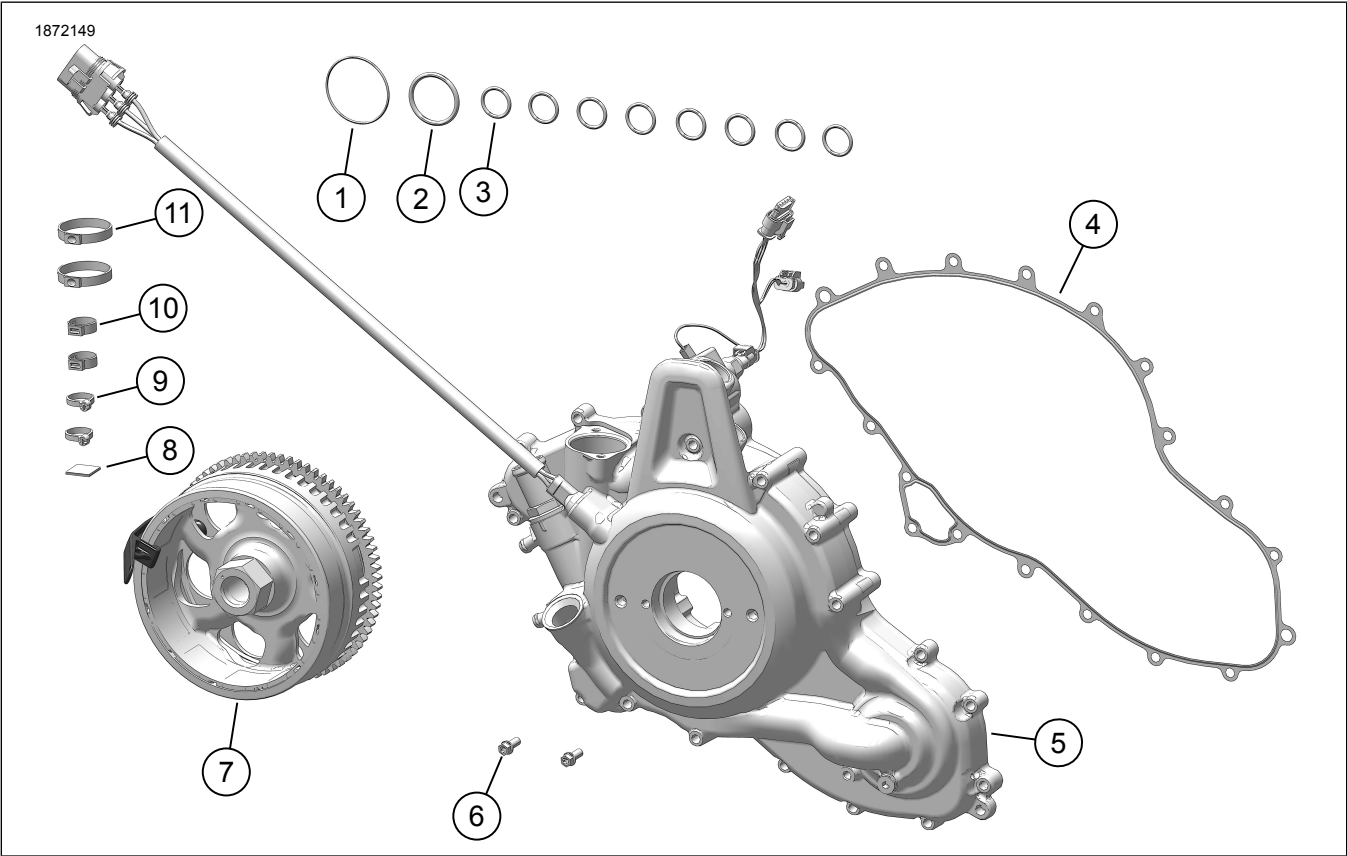


Figure 1. Kit Contents: Revolution Max Charging Assembly Service Kit

**Table 2. Kit Contents: Revolution Max Charging Assembly Service Kit**

<input checked="" type="checkbox"/>	Verify that all contents are present in the kit before installing or removing items from vehicle.				
	Item	Qty	Description	Part No.	Notes
<input type="checkbox"/>	1	1	O-ring, gasket	25700982	
<input type="checkbox"/>	2	1	O-ring	11900153	
<input type="checkbox"/>	3	8	O-ring	11900135	
<input type="checkbox"/>	4	1	Gasket, coolant manifold	25700981	
<input type="checkbox"/>	5	1	Coolant manifold, charcoal metallic	26900340	
<input type="checkbox"/>		1	Coolant manifold, satin black	26900341	
<input type="checkbox"/>	6	2	Screw, M6 x 13	10201458	
<input type="checkbox"/>	7	1	Rotor, charging assembly, complete	29900133	
<input type="checkbox"/>	8	1	Adhesive base	69203122	
<input type="checkbox"/>	9	2	Cable strap	10006	
<input type="checkbox"/>	10	2	Clamp, hose	10800171	
<input type="checkbox"/>	11	2	Clamp, hose	10800016	

## GENERAL

### Models

For model fitment information, see the Parts and Accessories (P&A) Retail Catalog or the Parts and Accessories section of [www.harley-davidson.com](http://www.harley-davidson.com).

Verify that the most current version of the instruction sheet is used. It is available at: [h-d.com/isheets](http://h-d.com/isheets)

Contact Harley-Davidson Customer Support Center at 1-800-258-2464 (U.S. only) or 1-414-343-4056.

### Installation Requirements

#### ▲ WARNING

**Rider and passenger safety depend upon the correct installation of this kit. Use the appropriate service manual procedures. If the procedure is not within your capabilities or you do not have the correct tools, have a Harley-Davidson dealer perform the installation. Improper installation of this kit could result in death or serious injury. (00333b)**

#### NOTE

*This instruction sheet references service manual information. A service manual for the year and model motorcycle is required for this installation and is available from:*

- A Harley-Davidson dealer.
- H-D Service Information Portal, a subscription-based access available for most 2001 and newer models. For more information see *Frequently ask questions about subscriptions*.

## PREPARE

1. Remove main fuse. See service manual.
2. Remove the following.
  - a. **RH975/S:** Left side chin spoiler.
  - b. **RH1250S:** Chin spoiler.
  - c. **RA1250/S:** Front skid plate.
3. Drain engine oil. See service manual.
4. Disconnect alternator harness from voltage regulator. See service manual.
5. Remove upper and lower coolant hoses from coolant manifold. See service manual.
6. Disconnect oil cooler hoses. See service manual.
7. Disconnect coolant temperature sensor connector. See service manual.
8. Disconnect crankshaft position sensor connector. See service manual.
9. Remove shift lever. See service manual.
10. Remove thermostat housing. See service manual.

## REMOVE

1. Remove and discard Original Equipment (OE) coolant manifold. See service manual.
2. Remove and discard OE rotor. See service manual.

## INSTALL

1. Install rotor. See service manual.
2. Install coolant manifold. See service manual.
3. See Figure 2. **RH975/S and RH1250S**: Install adhesive base (1) to battery box.
4. Route stator cable and secure cable strap (2) as shown.

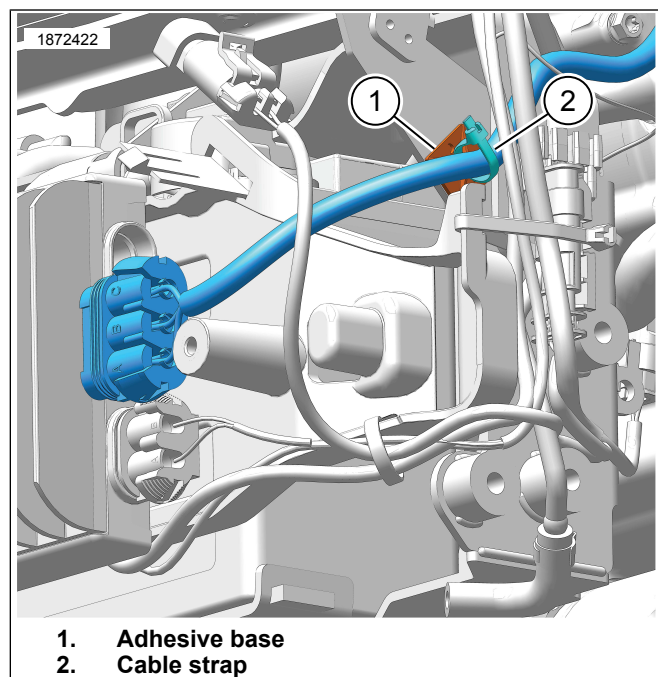


Figure 2. RH975/S and RH1250S

5. See Figure 3. **RA1250/S**: Route stator harness (1) and secure with cable strap (2) as shown.

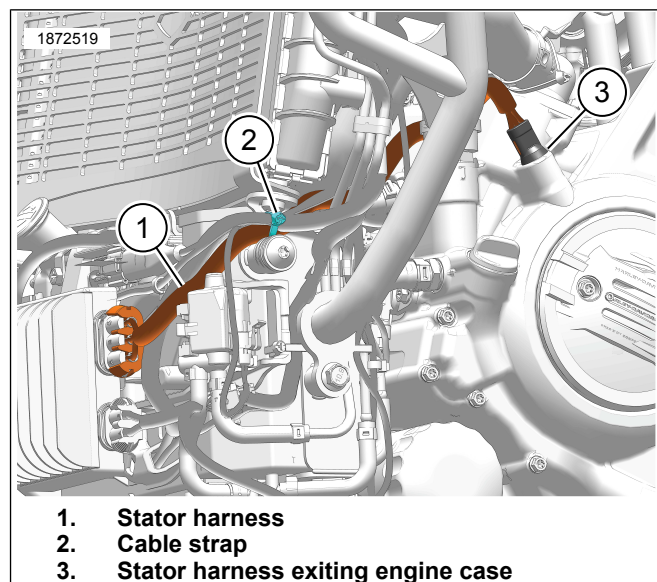


Figure 3. RA1250/S

## Derby Cover Screws

### NOTE

*Make sure to use screws (Item 6 in Kit Contents) to secure derby cover.*

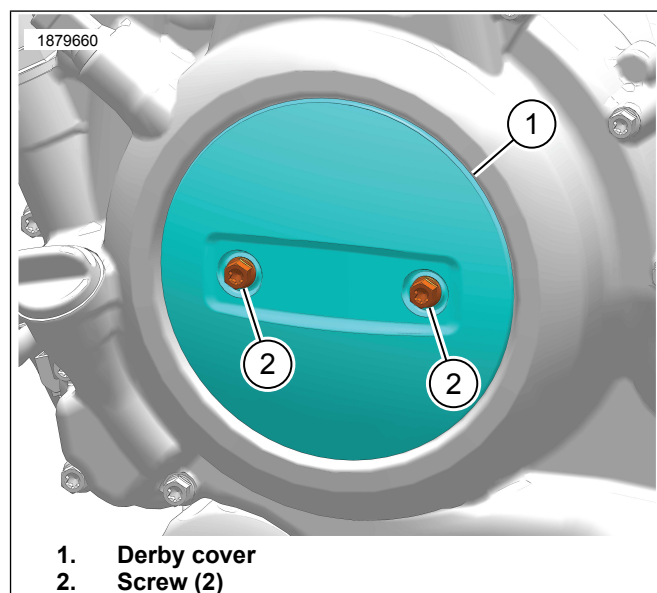


Figure 4. Derby Cover Screws

## COMPLETE

1. Install thermostat housing. See service manual.
2. Install shift lever. See service manual.
3. Connect crankshaft position sensor connector. See service manual.
4. Connect coolant temperature sensor connector. See service manual.
5. Connect oil cooler hoses. See service manual.

6. Install upper and lower coolant hoses to coolant manifold. See service manual.
7. Bleed coolant system. See service manual.
8. Connect alternator harness from voltage regulator. See service manual.
9. Fill engine oil. See service manual.
10. Install the following.
  - a. **RH975/S**: Left side chin spoiler.
  - b. **RH1250S**: Chin spoiler.
  - c. **RA1250/S**: Front skid plate.
11. Install main fuse. See service manual.