



INSTRUCTIONS

J05296

2024-01-24



HEATED HAND GRIP KIT

GENERAL INFORMATION

Table 1. General Information

Kits	Suggested Tools	Skill Level ⁽¹⁾
56100034, 56100318, 56100331, 56100342, 56100436, 56100437, 56100438, 56100568, 56100569	Safety glasses, Torque wrench, Heat gun, Crimping tool	
<i>(1) Tightening to torque value or other moderate tools and techniques required</i>		

KIT CONTENTS

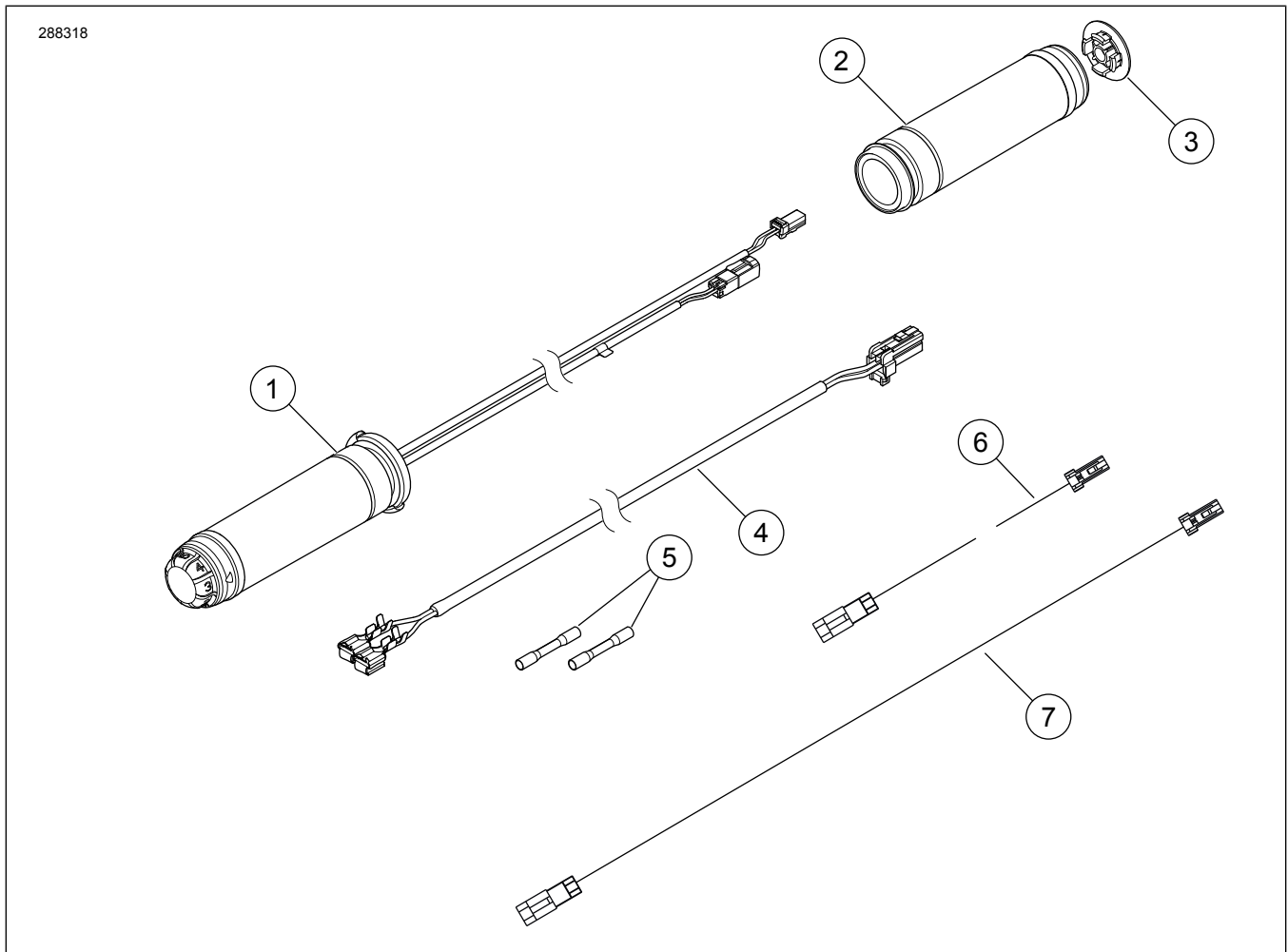


Figure 1. Kit Contents: Heated Hand Grips

Table 2. Kit Contents: Heated Hand Grip Kits

<input checked="" type="checkbox"/> Verify that all contents are present in the kit before installing or removing items from vehicle.					
<input type="checkbox"/>	Item	Qty	Description	Part No.	Notes
<input type="checkbox"/>	1	1	Heated hand grip, left	56209-10	Kit 56100034
<input type="checkbox"/>				56100325	Kit 56100318
<input type="checkbox"/>				56100338	Kit 56100331
<input type="checkbox"/>				56100316	Kit 56100342
<input type="checkbox"/>				56100430	Kit 56100436, Chrome
<input type="checkbox"/>				56100431	Kit 56100437, Black
<input type="checkbox"/>				56100432	Kit 56100438, Edge
<input type="checkbox"/>				56100572	Kit 56100568
<input type="checkbox"/>				56100573	Kit 56100569
<input type="checkbox"/>				2	1
<input type="checkbox"/>	56100326	Kit 56100318			
<input type="checkbox"/>	56100339	Kit 56100331			
<input type="checkbox"/>	56100317	Kit 56100342			
<input type="checkbox"/>	56100433	Kit 56100436, Chrome			
<input type="checkbox"/>	56100434	Kit 56100437, Black			
<input type="checkbox"/>	56100435	Kit 56100438, Edge			
<input type="checkbox"/>	56100570	Kit 56100568			
<input type="checkbox"/>	3	1	Cap, heated hand grip, right	56100573	Kit 56100569
<input type="checkbox"/>				56250-10	Kit 56100034
<input type="checkbox"/>				56100329	Kit 56100318
<input type="checkbox"/>				56100337	Kit 56100331
<input type="checkbox"/>				56100168	Kit 56100342
<input type="checkbox"/>				56100472	Kit 56100436, Chrome
<input type="checkbox"/>				56100471	Kit 56100437, Black
<input type="checkbox"/>				56100470	Kit 56100438, Edge
<input type="checkbox"/>				56100598	Kit 56100568
<input type="checkbox"/>	56100599	Kit 56100569			

Table 2. Kit Contents: Heated Hand Grip Kits

<input checked="" type="checkbox"/>	Verify that all contents are present in the kit before installing or removing items from vehicle.				
Item	Qty	Description	Part No.	Notes	
<input type="checkbox"/>	4	1	Adapter harness	69200232	Common to all kits
<input type="checkbox"/>	5	2	Splice connector	70586-93	
<input type="checkbox"/>	6	1	Interconnect jumper, black/white, 14 in.	62901809	
<input type="checkbox"/>	7	1	Power/Ground jumper, red/black, 20 in.	69201808	

GENERAL

Models

For model fitment information, see the Parts and Accessories (P&A) Retail Catalog or the Parts and Accessories section of www.harley-davidson.com.

Verify that the most current version of the instruction sheet is used. It is available at: h-d.com/isheets

Contact Harley-Davidson Customer Support Center at 1-800-258-2464 (U.S. only) or 1-414-343-4056.

Installation Requirements

2008 and 2009 Models require purchase of additional parts:

- Twist grip sensor (TGS) jumper harness 70415-08A (1)
- Connector 72902-01BK (1)
- Terminal pin 72990-01 (2)

Electrical Connection Kits by Year and Model:

- 2014 - 2016 Road King require separate purchase of 69200722
- 2017 and Later Road King and FLTRU require separate purchase of 69201599A
- 2016 and 2017 Softail and Dyna require separate purchase of 72673-11
- 2018 and Later Softail require separate purchase of 69201750

⚠ WARNING

Rider and passenger safety depend upon the correct installation of this kit. Use the appropriate service manual procedures. If the procedure is not within your capabilities or you do not have the correct tools, have a Harley-Davidson dealer perform the installation. Improper installation of this kit could result in death or serious injury. (00333b)

NOTE

This instruction sheet references service manual information. A service manual for the year and model motorcycle is required for this installation and is available from:

- A Harley-Davidson dealer.
- H-D Service Information Portal, a subscription-based access available for most 2001 and newer models. For more information see Frequently ask questions about subscriptions.

⚠ WARNING

When installing any electrical accessory, be certain not to exceed the maximum amperage rating of the fuse or circuit breaker protecting the affected circuit being modified. Exceeding the maximum amperage can lead to electrical failures, which could result in death or serious injury. (00310a)

NOTICE

It is possible to overload the vehicle's charging system by adding too many electrical accessories. If the combined electrical accessories operating at any one time consume more electrical current than the vehicle's charging system can produce, the electrical consumption can discharge the battery and cause damage to the vehicle's electrical system. (00211d)

This Heated Hand Grip kit requires up to **3.5 amps** additional current from the electrical system.

HEATED GRIP

REMOVE

⚠ WARNING

To prevent accidental vehicle start-up, which could cause death or serious injury, remove main fuse before proceeding. (00251b)

NOTICE

Do not remove or install the master cylinder assembly without first positioning a 5/32-inch (4 mm) thick insert between the brake lever and lever bracket. Removing or installing the master cylinder assembly without the insert in place may result in damage to the rubber boot and plunger on the front stoplight switch. (00324a)

1. Remove hand grips. See service manual.

NOTE

The twist grip sensor in the right side of the handlebar has a seal cap that protects internal electrodes from dirt and moisture, and also serves as a retention device for the throttle grip.

To remove the grip, a slight tug may be necessary to release the index pins in the grip from the receptacle in the seal cap.

Upon removing the grip, check the location of the seal cap.

If the seal cap is still fastened to the index pins **inside** the old throttle grip, it can be discarded along with the grip.

If the seal cap is still fastened to **the end of the twist grip sensor**:

- See Figure 2. Insert a small screwdriver or other flat-blade tool into flat area on one side of seal cap.
- Press leg on underside of cap to free it from the slot at end of twist grip sensor. Pry up one end of the cap.
- Repeat on other side of cap.
- Carefully remove cap and discard it.

2. **2008 and 2009 Models:** Remove twist grip sensor (TGS) and TGS jumper harness. See service manual.

NOTE

Before removing twist grip sensor, attach chaser wire to jumper harness.

3. See Figure 3. Unplug TGS jumper harness from TGS and main harness. Discard stock jumper harness (2).
4. See Figure 4. Attach **new** TGS jumper harness to TGS.
 - a. Connect connector (3) to TGS harness.
 - b. Connect connector (4) to heated grip connector.

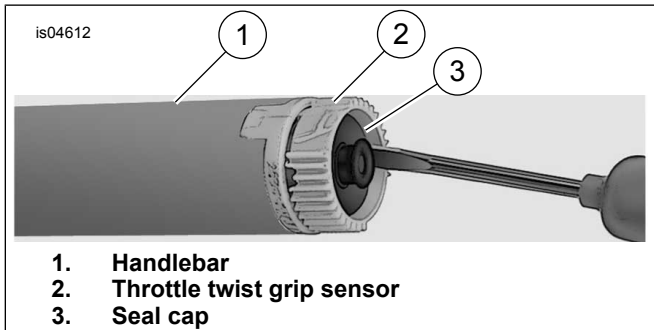


Figure 2. Remove Seal Cap

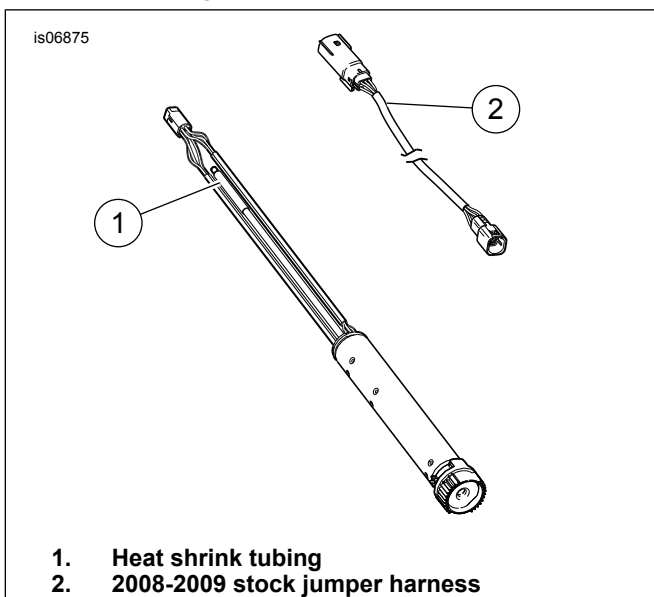


Figure 3. 2008 and 2009 TGS and Harness

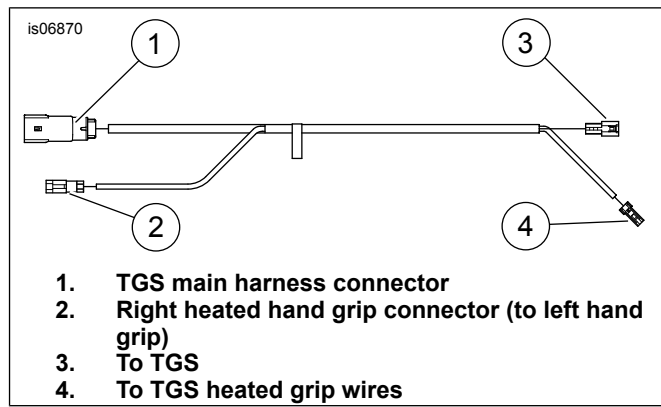


Figure 4. TGS Jumper Harness

INSTALL

NOTE

When routing and closing Right and Left Hand Control Modules (R&LHCMs), verify there are no pinched wires. See service manual.

NOTE

If a chaser wire was not used, air pressure or an electrician's fish tape can be used to thread the wire harnesses completely through the handlebar.

1. **2008 and 2009 Models:** Thread twist grip sensor wire harnesses into right side of handlebar.
 - a. While feeding the wiring into handlebar, gently pull connectors at end of jumper harness to draw twist grip sensor out center of handlebar.
 - b. Fit index tabs on twist grip sensor into slots in handlebar. One index tab and slot are smaller than the others to prevent improper assembly.
2. **ALL MODELS:** Thread left side heated grip wire harness all the way through and out center of handlebar.

NOTE

When installing Right Hand Control Module (RHCM), verify throttle end play is set correctly. See service manual.

- a. Some models may require an additional jumper to reach from left side grip to mating connector on twist grip sensor (depending on handlebar height, vehicle model and year).
 - b. See Figure 1. This 14 in. jumper with black/white wires is provided in kit.
3. See Figure 5. Position left side heated grip (4) so larger diameter portion of flange (5) is at the bottom. Push grip fully onto handlebar.

NOTE

- Make sure that the handlebar surface is smooth, dry and thoroughly cleaned of all dirt.
- Before pulling wire through handlebars, run wire alongside handlebar to determine if an extension is needed. If an **ADDITIONAL** extension is needed, see parts list.

- *Some internally wired handlebars, like chiseled or models with handlebar mounted turn signals, de-pinning the heated grip connector may be required.*
 - *Take a photo of all connectors for re-assembly prior to de-pinning.*
 - *To aid in pulling, spray or rub with soapy water.*
4. See Figure 5, which shows similar left side switch mounting. Position lower switch housing beneath grip so that grooves (2) on outboard side of switch housing fit over flange on end of grip.
 5. Position upper switch housing over handlebar and lower switch housing.
 6. Start the upper and lower switch housing screws, but do not tighten.
 - a. Verify that wire harness conduit runs in depression at bottom of handlebar.
 7. Position clutch hand-lever assembly inboard of switch housing assembly, engaging tab on lower switch housing in groove at bottom of clutch lever bracket.
 8. Align hole in handlebar clamp with hole in clutch lever bracket, and start lower screw with flat washer.
 - a. Adjust switch housing and clutch hand control position for rider comfort.
 9. Using a T-27 TORX drive head, tighten first upper, then lower handlebar clamp screws. Tighten.
Torque: 6.8–9 N·m (60–80 **in-lbs**)
 10. Using a T-25 TORX drive head, tighten first lower, then upper switch housing screws. Tighten.
Torque: 4–5.4 N·m (35–48 **in-lbs**)
 11. Obtain **new** right side heated throttle grip (2) from kit.

NOTE

When installing RHCM, verify throttle end play is set correctly. See service manual.

12. Tucked inside outboard end of throttle grip is a round plastic plug, with two-pin terminals on one side.
 - a. Carefully pull plug out from grip through outboard opening.
13. Slide **new** heated throttle grip over end of handlebar.

NOTE

*Make sure that handlebar surface and inside of **new** throttle grip are smooth, dry and thoroughly cleaned of all dirt.*

- a. Rotate grip to verify that internal splines are engaged with those on twist grip sensor.
14. Position lower switch housing beneath grip so that grooves (2) on outboard side of switch housing fit over flange on end of grip.

15. Position upper switch housing over handlebar and lower switch housing.
16. Start upper and lower switch housing screws, but do not tighten.
 - a. Verify that the wire harness conduit runs in depression at bottom of handlebar.
17. Position brake master cylinder housing inboard of switch housing assembly, engaging tab on lower switch housing in groove at bottom of master cylinder housing.
18. Align hole in handlebar clamp with hole in master cylinder housing, and start lower screw with flat washer.
 - a. Adjust switch housing and brake hand control position for rider comfort.
19. Using a T-27 TORX drive head, tighten first upper, then lower handlebar clamp screws. Tighten.
Torque: 6.8–9 N·m (60–80 **in-lbs**)
20. Using a T-25 TORX drive head, tighten first lower, then upper switch housing screws. Tighten.
Torque: 4–5.4 N·m (35–48 **in-lbs**)

NOTE

Do not pull switch housing so far inboard as to cause throttle grip to bind or drag on handlebar. Actuate throttle grip to verify that it freely returns to idle position.

▲ WARNING

Before starting engine, be sure throttle control will snap back to idle position when released. A throttle control that prevents engine from automatically returning to idle can lead to loss of control, which could result in death or serious injury. (00390a)

21. Verify that right grip/throttle sleeve rotates and returns freely and does not bind on handlebar or switch housing.
22. Using a needle-nose pliers or similar tool, carefully grasp round plastic plug at outboard end of throttle grip.

NOTE

The terminal sockets on twist grip sensor are offset to one side, and pins can only be inserted one way.

- a. Insert plug back through opening in grip and insert terminal pins into sockets at end of twist grip sensor, engaging the two legs of the plug into throttle grip sensor openings.
 - b. Press plastic plug firmly to verify that pins are fully seated in the sockets.
23. Install end cap onto end of throttle grip.

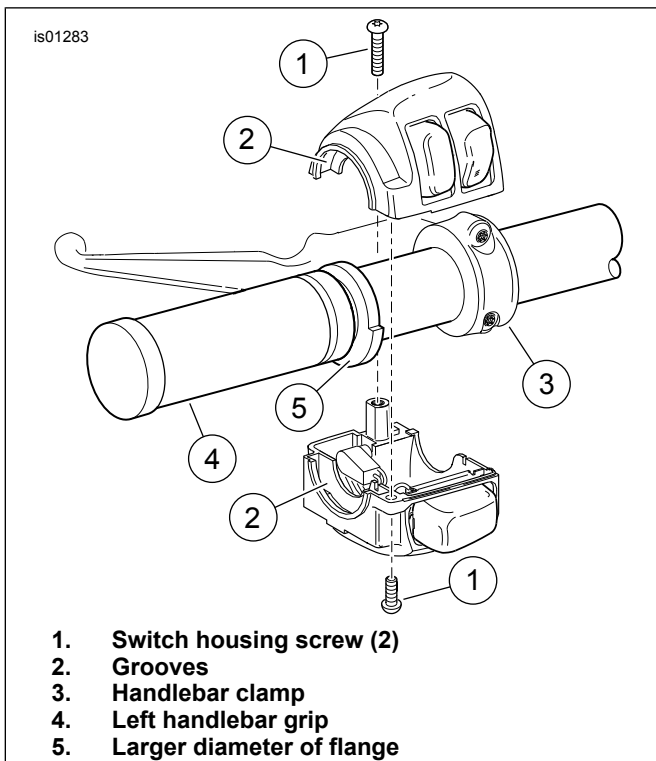


Figure 5. Left Handlebar Switch Housing

CONNECTION TO VEHICLE WIRING

NOTE

- Make sure heated grips are installed correctly. Incorrect installation will produce excessive heat.
- Vehicles may have a green or black power connector depending on the year.
- Left grip and jumper harness may contain a green or black connector depending on production year.

2008 - 2013 FLH MODELS

1. Remove outer fairing. See service manual.
2. See Figure 6. Connect power connector half from left hand grip to hand grip power connector (3).

NOTE

See Figure 6. Hand grip power connector (3) has a cap that must be removed before connecting to vehicle wiring.

3. Connect (1) to left side hand grip connector.
4. **2008 and 2009 Models Only:**
 - a. Remove wiring from back of cigarette lighter. Obtain harness assembly from kit. Connect terminals from harness to cigarette lighter.
 - b. Make sure to match the wire colors before splicing. Install wiring removed from cigarette lighter in previous step to tabs on harness.
 - c. Connect TGS main harness connector from jumper harness to connector (2).

5. Connect heated hand grip connector half from left hand grip to right side heated grip interconnect connector (1).

NOTE

In next step, make sure to match the wire colors before splicing.

6. Install the outer fairing. See service manual.

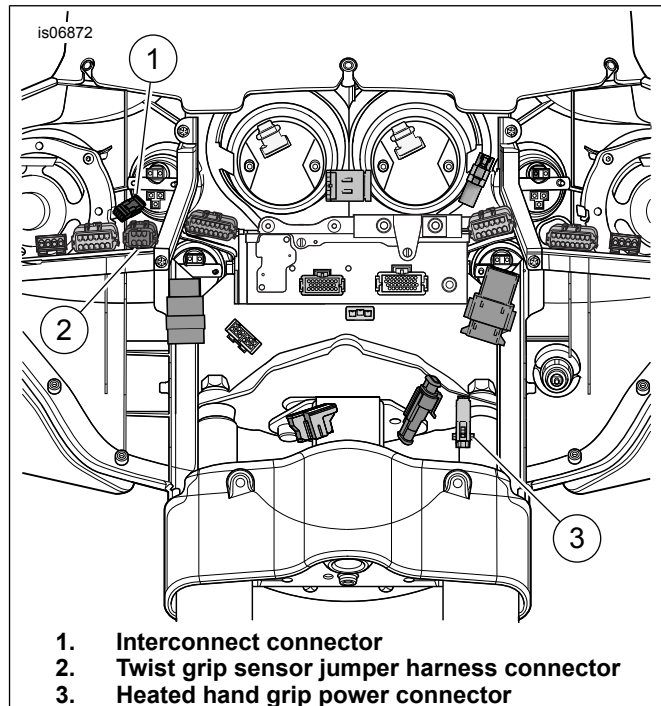


Figure 6. Fairing Wiring (FLH models)

2008 - 2013 FLTR MODELS

1. Remove outer fairing. See service manual.
2. Remove wiring from back of cigarette lighter.
 - a. Obtain harness assembly from kit.
 - b. Connect terminals from harness to cigarette lighter.
3. Install wiring removed from cigarette lighter in previous step to tabs on harness.

NOTE

In next step, make sure to match the wire colors before splicing.

4. > See Figure 7. Connect TGS connector half from right hand grip to harness connector half.
5. Connect interconnect connector half from left hand grip to interconnect connector half from right side hand grip

NOTE

In next step, make sure to match the wire colors before splicing.

6. Install the outer fairing. See service manual.

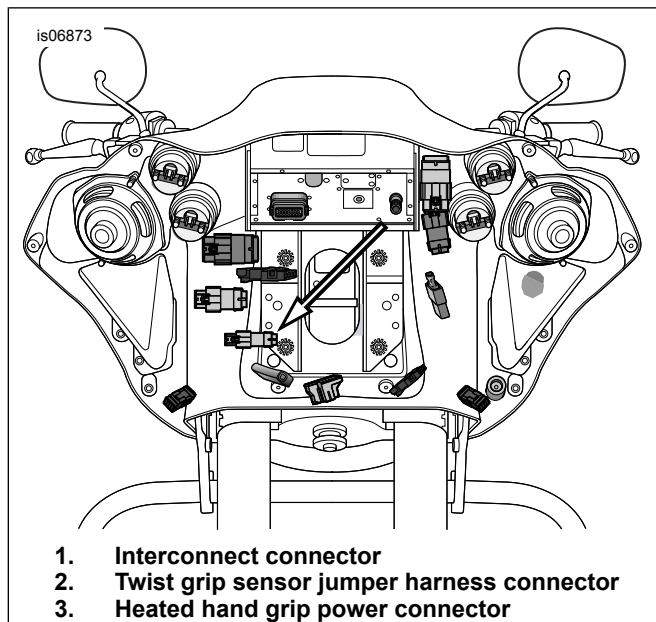


Figure 7. Twist Grip Sensor Jumper Harness Connector (FLTR models)

2008 - 2013 ROAD KING MODELS

NOTE

Make sure to match the wire colors before splicing.

1. See Figure 1. Obtain harness assembly from kit. Cut the two spade terminals from harness.
2. Remove headlight assembly. See service manual.
3. **Models with fender tip light:**
 - a. See Figure 8. Locate fender tip light wiring.
 - b. See Figure 1. Splice into fender tip light wiring near connector using two splice connectors (5) from kit.
 - c. Cut orange/white and black wires approximately 2.52 cm (1 in) from connector.
 - d. Strip a 9.5 mm (3/8 in) section of insulation from ends of kit harness and vehicle wires.
 - e. See Figure 9. From cut ends, insert one orange/white wire into one end of splice connector. In other end of splice connector, insert other orange/white wire with red wire from adapter harness.
 - f. Repeat procedure for black wires.
4. **Models without fender tip light:**
 - a. See Figure 8. Locate fender tip light wiring (2).
 - b. Cut wires 5.08 cm (2 in) from connector.
 - c. Strip a 9.5 mm (3/8 in) section of insulation from the ends of the kit harness and vehicle wires.
 - d. See Figure 9. Insert the orange/white wire from step 4b into one end of sealed splice connector.

- e. See Figure 9. Insert the red wire from adapter harness into other end of sealed splice connector.
- f. Repeat procedure for black wires.

2008 - 2013 ROAD KING MODELS:

1. Match color of sealed splice connector with color of crimp cavity of crimping tool.
 - a. Crimp wires into connector.
2. Repeat all above procedures for opposite side.

▲ WARNING

Be sure to follow manufacturer's instructions when using the UltraTorch UT-100 or any other radiant heating device. Failure to follow manufacturer's instructions can cause a fire, which could result in death or serious injury. (00335a)

3. Using the UltraTorch Heat Gun with Heatshrink Attachment, or suitable radiant heating device, heat the crimped splice to encapsulate the sealed splice connection.
 - a. Apply heat from center of crimp out to each end until meltable sealant comes out of both ends of connector.
4. Connect power connector half from left hand grip to harness connector half.
5. See Figure 8. Connect TGS connector half from right hand grip to harness connector half (1).
6. Connect interconnect connector half from left hand grip to interconnect connector half from right side hand grip.
7. Install headlamp. See service manual.

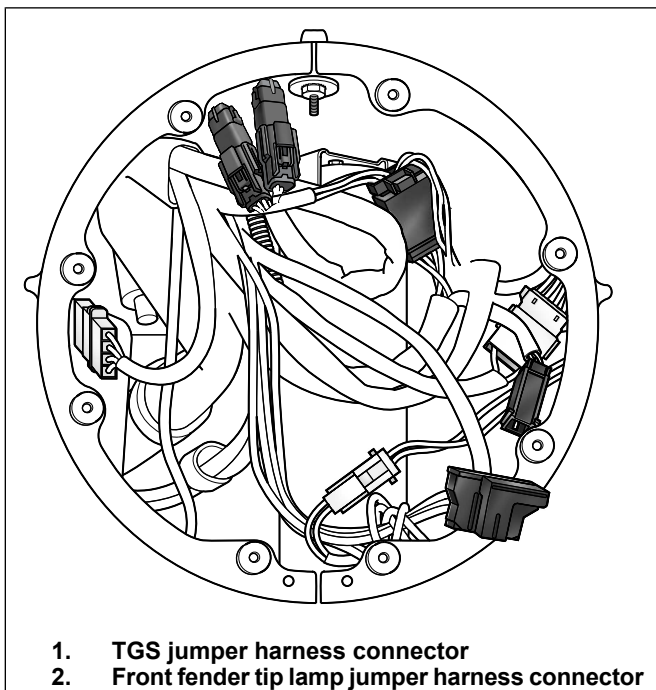


Figure 8. Road King Headlamp Wiring

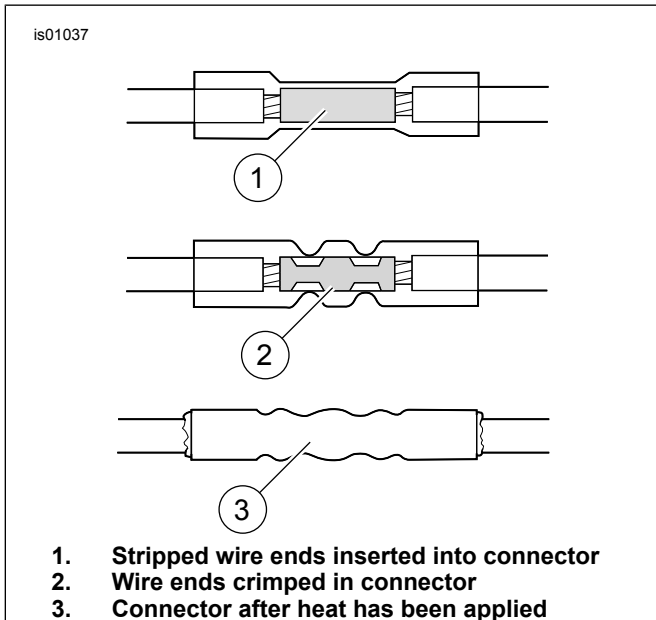


Figure 9. Sealed Splice Connections

2014 and Later TOURING MODELS (except Road King and FLTRU)

1. Remove outer fairing.
2. Locate heat grip interconnect [206]. See service manual.
3. See Figure 10. Connect heated grip interconnect (1) to left grip.
4. Locate heated grip power connector [189B]. See service manual.
5. See Figure 10. Connect heated grip power/ground wire (2) from left grip.

6. Secure with cable straps.

NOTE

Kit contains jumpers if additional wire length is required.

2014 and Later ROAD KING AND FLTRU, 2016 and Later SOFTAIL AND DYNA FXDLS

1. Remove fuel tank and seat (side covers for Touring and Dyna). See service manual.
2. Locate heat grip interconnect [206]. See service manual.
3. See Figure 10. Connect heated grip interconnect (1) to left grip.
4. Connect jumper (3), 20 in. red/black, from kit to power/ground connector (2) of left grip.

NOTE

Kit contains jumpers if additional wire length is required.

5. **2018 and Later Softail:**

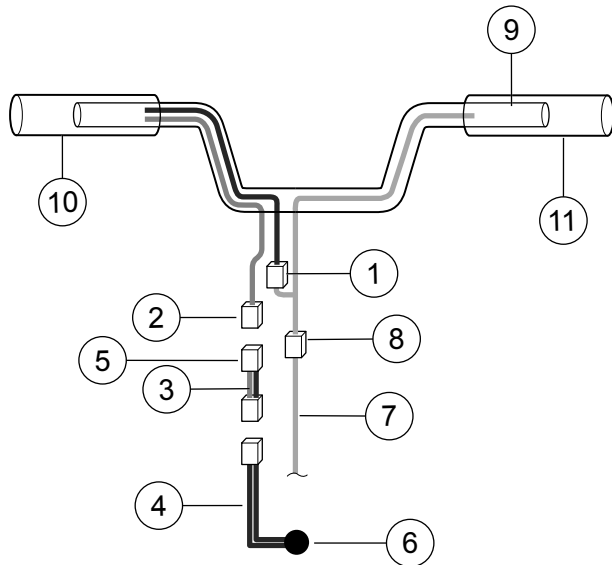
- a. Install 69201750 per instruction in that kit.

NOTE

Some models may have a damper weight that needs to be removed inside the left side of the handlebar.

- b. See Figure 10. Mate 2-way connector from heated grip (2) to 2-way connector of 69201750 behind headlamp.
- c. Add jumper (3) if addition length is required.
- d. Proceed to step 10.
6. Locate electrical connection kit by model and year, place connector and route harness. Do not splice.
7. Cut jumper (4) to length sufficient to splice to kit (6).
8. Strip back wires and splice to electrical connection harness (7).
 - a. Black to Black (ALL)
 - b. **Dyna and 2016 - 2017 Softail:** Red to Red/Yellow (72673-11)
 - c. **2014 and Later Touring:** Red to V/BE (69200722 or 69201599A)

9. Secure with wire straps.
10. Finish installation of electrical connection kit (6) per kit instructions.
11. Install seat. After installing seat, pull up on the seat to verify that it is secure. See service manual.
12. Install fuel tank. See service manual.



1. Heated Grip Connector (insert jumper 69201809 if needed)
2. Power/Ground Connector
3. Jumper 69201808 (Softail, Dyna, Road King and FLTRU)
4. Adapter Harness 69200232
5. Heated Grip Connector [C189B]
6. Electrical Connection Kit: (All Black to Black) 69200722, 69201599A V/BE to Red, 72673-11 R/Y to Red, 69201750 use connector
7. Vehicle Harness
8. Twist Grip Sensor Connector
9. Twist Grip Sensor
10. Grip, left
11. Grip, right

Figure 10. Electrical Connections

3. Start engine and check hand grips at all settings for proper heating.
 - a. Ensure grips do not produce heat in the off setting.

RETURN TO SERVICE

NOTE

DO NOT perform the following steps until the heated hand grips and all related wiring have been installed according to the procedures outlined in this instruction sheet.

1. Verify that the right grip/throttle sleeve rotates and returns freely and does not bind on handlebar or switch housing.
 - a. DO NOT operate vehicle unless the throttle functions properly.
2. Before starting vehicle, check that hand grips are not producing heat.

NOTE

Switch heated hand grips on/off with ignition to avoid draining battery. The hand grips produce peak heat with engine running at cruising speed.

The heat settings on heated hand grip control dial range from 1 (minimum) to 6 (peak).