



INSTRUCTIONS

94100160

2021-02-05



STAGE I & II SPEAKER KIT - SADDLEBAG LID (PN 76000986)



GENERAL

NOTE

The QR code can only be scanned in the Harley-Davidson audio app.

The newly installed audio system and speakers will not play audio unless it is configured using the Harley-Davidson audio app or by an authorized Harley-Davidson dealership.

Table 1.

Harley-Davidson Audio Powered by Rockford Fosgate®	
Kit	QR Code
76000986 (Stage I)	
76000987 (Stage II)	

NOTE

The various generations of speakers, amplifiers and wiring for Harley-Davidson vehicles were not designed or tested to work together. Please consult your dealership to ensure optimal performance and compatibility.

The Harley-Davidson Audio Powered by Rockford Fosgate speakers are acoustically optimized to work together with speakers of the same stage level (I or II). The speaker's output signals are assigned by the APP including location and stage level. If speaker output assignments, stage numbers and locations, are incorrectly configured, damage will not occur, but diminished performance should be expected.

Models

NOTE

These speakers are for use ONLY on 2014 and later Harley-Davidson audio systems. Using these speakers on 2006-2013 Harley-Davidson audio systems **WILL permanently damage these speakers**. Using these speakers on 2005 or earlier Harley-Davidson audio systems **WILL permanently damage those systems**.

For model fitment information, see the P&A retail catalog or the Parts and Accessories section of www.harley-davidson.com (English only).

Ensure you are using the most current version of the instruction sheet which is available at: h-d.com/isheets

Contact Harley-Davidson Customer Support Center at 1-800-258-2464 (U.S. only) or 1-414-343-4056.

Installation Requirements

Download Harley-Davidson mobile app.

These items are available at your Harley-Davidson dealership.

- **2014 and Later FLHTKSE, FLTRUSE and Touring:** Separate purchase of Harley-Davidson Primary Amplifier and Dongle Kit (Part No. 76000997) is required for this installation.
- **2014 and Later FLHTKSE, FLTRUSE and Touring:** Separate purchase of Harley-Davidson Primary Amplifier Installation Kit (Part No. 76000974 or 76001045) is required for this installation.
- **2014 and Later FLHTKSE, FLTRUSE and Touring:** Separate purchase of Harley-Davidson Secondary Amplifier Installation Kit (Part No. 76000975) may be required for this installation. This depends if there are six or more speakers and how the amplifier channels are assigned.
- **2014 and Later FLHTKSE, FLTRUSE and Touring:** Separate purchase of Harley-Davidson Saddlebag Speaker Harness Install Kit (Part No. 76000979) is required for this installation.

⚠ WARNING

Rider and passenger safety depend upon the correct installation of this kit. Use the appropriate service manual procedures. If the procedure is not within your capabilities or you do not have the correct tools, have a Harley-Davidson dealer perform the installation. Improper installation of this kit could result in death or serious injury. (00333b)

Installation by a technician at a Harley-Davidson dealership is recommended.

Kit Contents

See Figure 8 and Table 2.

PREPARE

⚠ WARNING

To prevent accidental vehicle start-up, which could cause death or serious injury, remove main fuse before proceeding. (00251b)

NOTE

This instruction sheet references service manual information. A service manual for this year/model motorcycle is required for this installation. One is available from a Harley-Davidson dealer.

1. Remove left saddlebag.
2. Remove left side cover.

NOTE

Models with security: Disable security system.

Remove main fuse.

REMOVE

NOTE

New speaker components are shown in graphic, OEM is similar.

1. See Figure 1. Disconnect OEM audio harness connectors.
2. Remove grille screws (5).
3. Remove OEM speaker grille (1).
4. Remove speaker screws (3).
5. Remove OEM speaker (4) from saddlebag lid.
6. Repeat procedure for opposite side.

INSTALL

NOTE

Unfinished saddlebag covers must be painted before speaker installation.

Separate purchase of Harley-Davidson Saddlebag Speaker Install Kit is required for this installation. Refer to Installation Requirements.

1. See Figure 8. Install speaker (2, 5 or 3, 4) into saddlebag lid.

NOTE

The long screw (3), short screw (5), spacer (6) and harness are included in SADDLEBAG SPEAKER HARNESS INSTALL KIT (PN 76000979). See Installation Requirements.

- a. See Figure 2. Orient speaker to saddlebag lid.
2. See Figure 1. Install long speaker screws (3).
 - a. Alternately tighten screws.
 - b. Tighten.
Torque: 1.1–1.7 N·m (10–15 **in-lbs**) *Speaker screw*
3. Install spacers (6) into saddlebag lid (2).
4. Install speaker grille (1) to saddlebag lid (2).

5. Install short grille screws (5).
 - a. Alternately tighten screws.
 - b. Tighten.
Torque: 1.1–1.7 N·m (10–15 **in-lbs**) *Speaker screw*
6. Connect NEW audio harness connectors.
 - a. The connectors are unique and only fit one way.
 - b. Add cable straps and wire retainers from the Amplifier Installation Kit to retain the harness inside the saddlebag as needed.
7. Repeat procedure for opposite side.

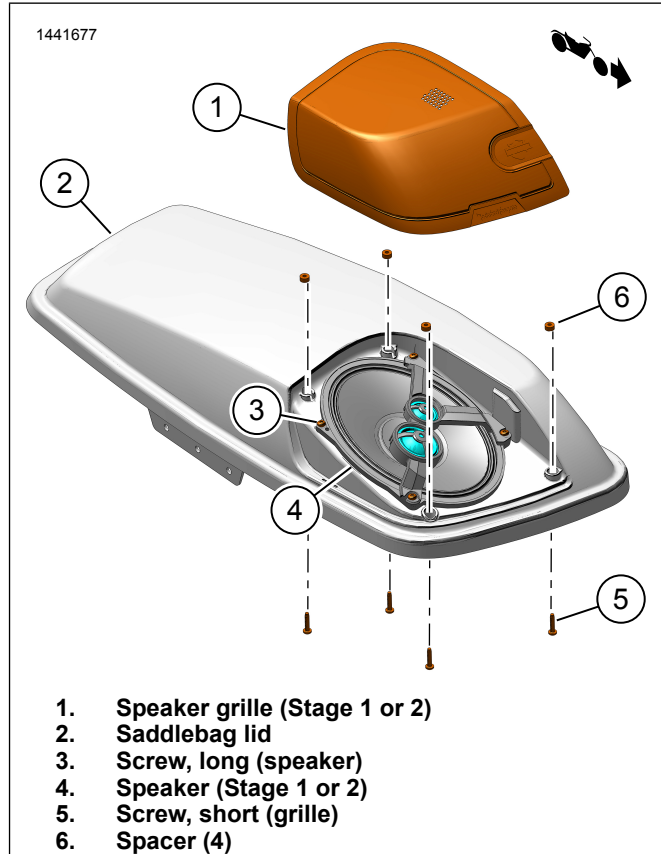


Figure 1. Speaker and Grille Install

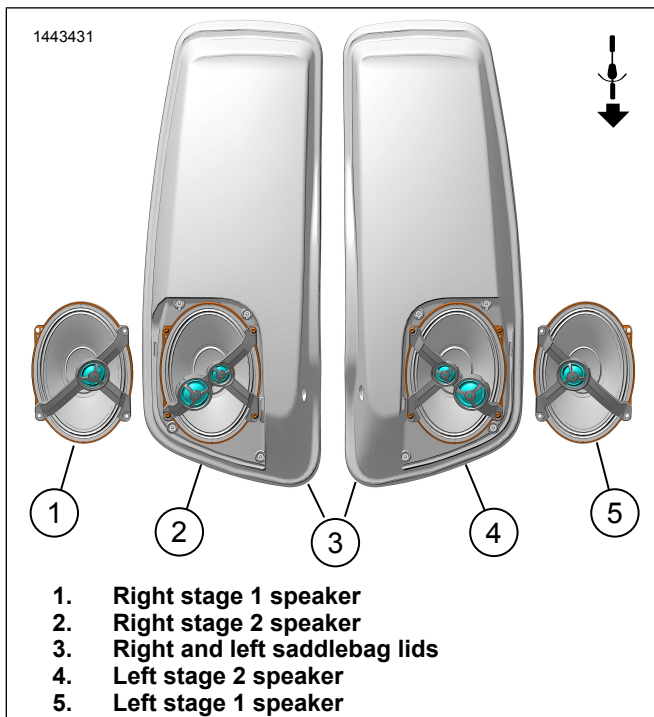


Figure 2. Speaker Orientation (Typical)

COMPLETE

NOTE

To prevent possible damage to the sound system, verify that the ignition is **OFF** before installing the main fuse.

1. Install main fuse.
2. Turn the ignition ON, but do not start the motorcycle.
3. Make sure that all speakers are working and front/rear fader function is operating correctly. If not, check speaker wiring.
4. Install left side cover.
5. Install left saddlebag.

APP SETUP

1. See Figure 3. Accessing your audio system.
 - a. Pair device (1) to system.
 - b. Access app menus (2) to setup vehicle sound system.

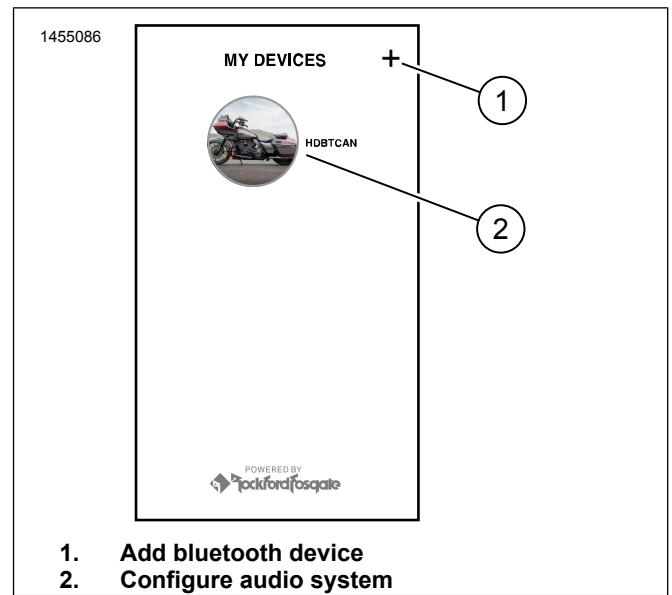


Figure 3. System Access

2. See Figure 4. Main menu screen.
 - a. Main menu icon (1).
 - b. Reset or change security personal identification number (PIN) (2).
 - c. Edit and rename your system (3).
 - d. Customize main menu with your bike picture (4).
 - e. Bluetooth connection indicator. Slash through symbol indicates: Not Connected (5).

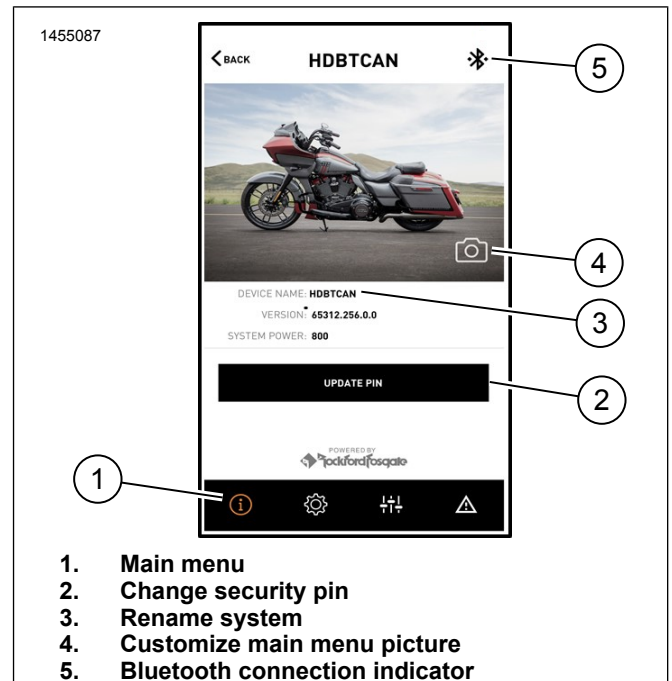


Figure 4. Main Menu

3. See Figure 5. Setup menu screen.
 - a. Setup menu icon (1).
 - b. Use to scan QR code (2) on iSheet.
 - c. Manual setup for Stage 1 or 2 speakers, speaker location and white noise to assign speaker locations.

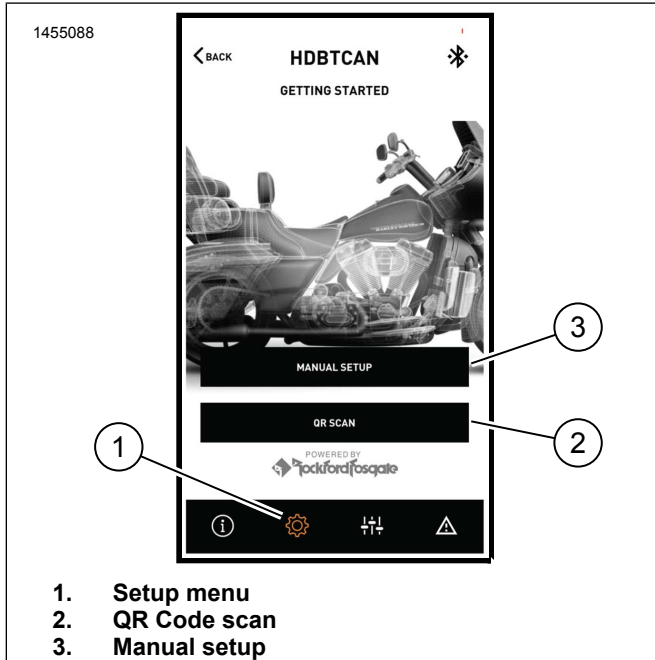


Figure 5. Setup Menu

4. See Figure 6. Equalizer setup screen.
 - a. Equalizer setup icon (1)
 - b. Tune 7-Band equalizer (2) frequencies.
 - c. Custom or preset equalizer selections (3).

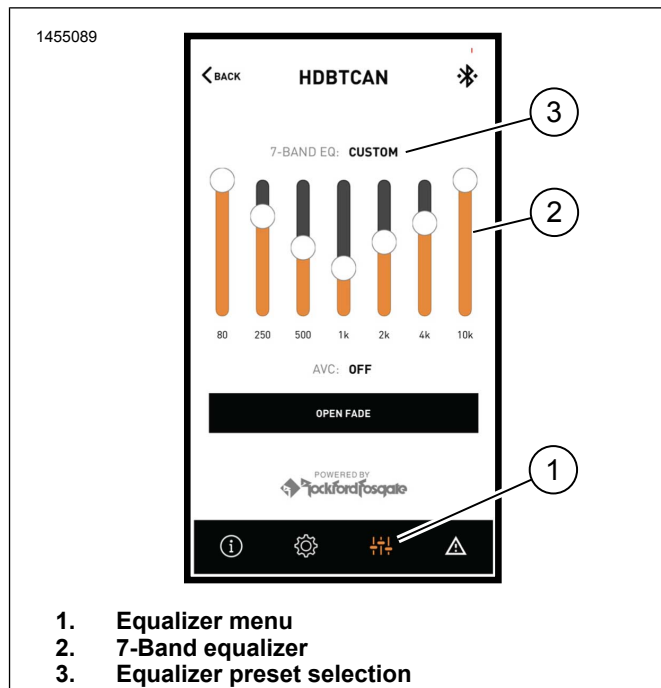


Figure 6. Equalizer Menu

5. See Figure 7. Diagnostic menu screen.
 - a. Diagnostic menu icon (1) displays sound system status.
 - b. Open the speaker testing screen (2).
 - c. Refreshes speaker and amplifier status (3) after component repair.
 - d. Select speaker for white noise (4) test and functionality.
 - e. Return to diagnostic menu screen (5).

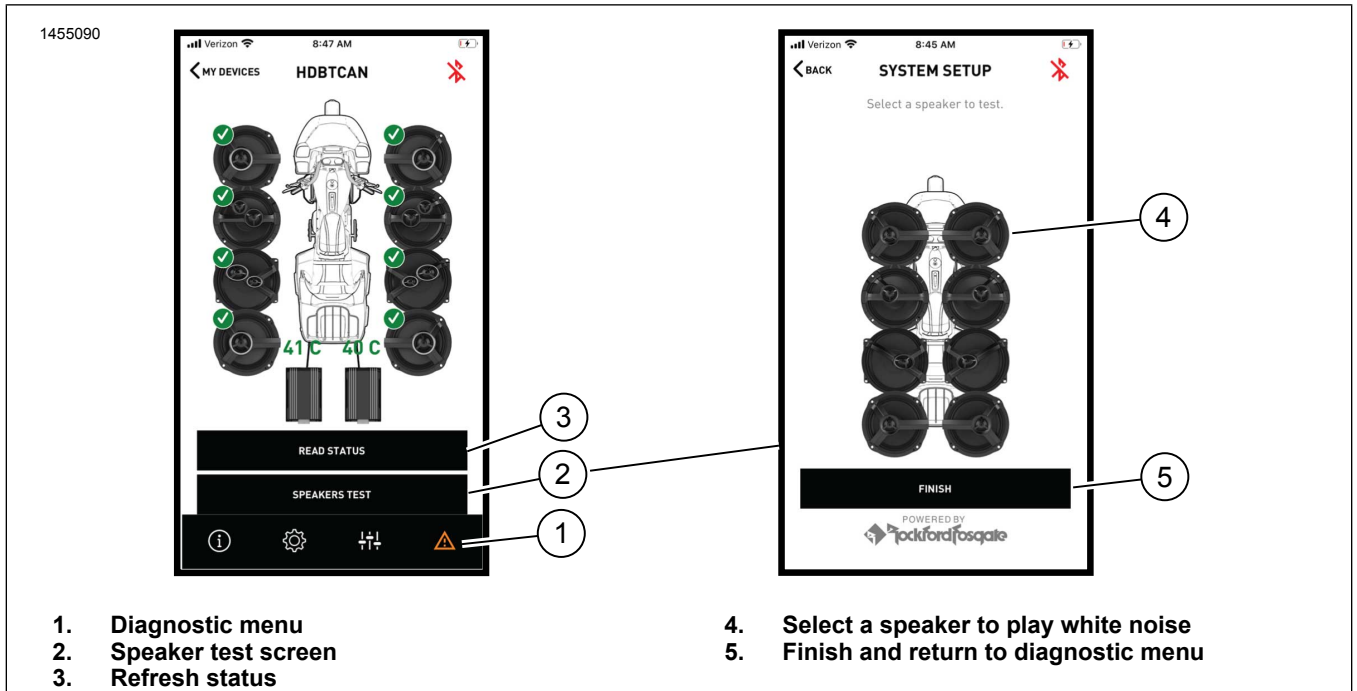


Figure 7. Diagnostic Menu

SERVICE PARTS

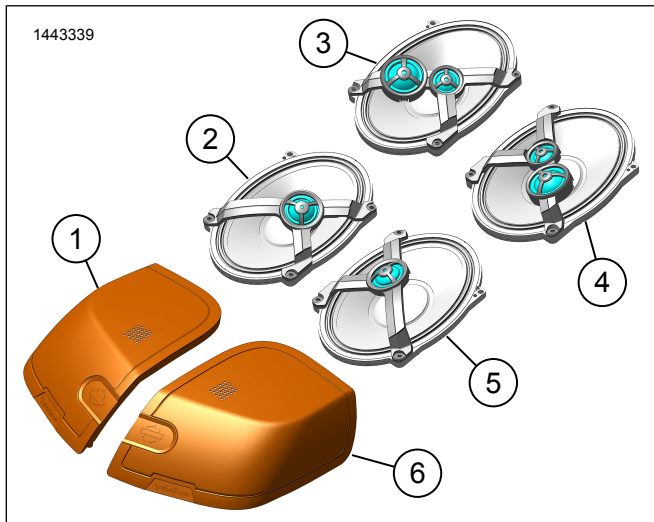


Figure 8. Service Parts, Boom! Audio Stage II Saddlebag Speaker Kit

Table 2. Service Parts

Item	Description (Quantity)	Part Number	Kit Number
1	Speaker grille, right, stage 1	76001025	76000986
	Speaker grille, right, stage 2	76001027	76000987
2	Speaker, right, stage 1	76001012	76000986
3	Speaker, right, stage 2	76001013	76000987
4	Speaker, left, stage 2	76001001	76000987
5	Speaker, left, stage 1	76001000	76000986
6	Speaker grille, left, stage 1	76001024	76000986
	Speaker grille, left, stage 2	76001026	76000987