



INSTRUCTIONS

94100162

2021-02-04



FAIRING SPEAKER HARNESS INSTALL KIT (PN 76000992)

GENERAL

NOTE

The newly installed audio system and speakers will not play audio unless it is configured using the Harley-Davidson audio app or by an authorized Harley-Davidson dealership.

Table 1.

Harley-Davidson Audio Powered by Rockford Fosgate®	
Kit	QR Code
76000992	N/A

NOTE

The various generations of speakers, amplifiers and wiring for Harley-Davidson vehicles were not designed or tested to work together. Please consult your dealership to ensure optimal performance and compatibility.

Models

For model fitment information, see the P&A retail catalog or the Parts and Accessories section of www.harley-davidson.com (English only).

Ensure you are using the most current version of the instruction sheet which is available at: h-d.com/isheets

Contact Harley-Davidson Customer Support Center at 1-800-258-2464 (U.S. only) or 1-414-343-4056.

Installation Requirements

Download Harley-Davidson audio app.

This harness is for use ONLY on **2014 and later** Harley-Davidson audio systems.

These items are available at your Harley-Davidson dealership.

- **2014 and Later Touring:** Separate purchase of Harley-Davidson Primary Amplifier and Dongle Kit (Part No. 76000997) is required for this installation.
- **2014 and Later Touring:** Separate purchase of Harley-Davidson Primary Amplifier Installation Kit (Part No. 76000974 or 76001045) is required for this installation.
- **2014 and Later Touring:** Separate purchase of Harley-Davidson Stage 1 or 2 Speaker Kit (Part No. 76000980, 76000981, 76000982 or 76000983) is required for this installation.

⚠ WARNING

Rider and passenger safety depend upon the correct installation of this kit. Use the appropriate service manual procedures. If the procedure is not within your capabilities or you do not have the correct tools, have a Harley-Davidson dealer perform the installation. Improper installation of this kit could result in death or serious injury. (00333b)

Installation by a technician at a Harley-Davidson dealership is recommended.

Kit Contents

See Figure 9 and Table 2.

PREPARE

⚠ WARNING

To prevent accidental vehicle start-up, which could cause death or serious injury, remove main fuse before proceeding. (00251b)

NOTE

This instruction sheet references service manual information. A service manual for this year/model motorcycle is required for this installation. One is available from a Harley-Davidson dealer.

1. Remove left and right saddlebags (excludes Tri-Glide).
2. Remove left and right side covers.
3. Remove main fuse.

NOTE

Models with security: Disable security system.

4. Remove seat.
5. Remove fuel tank.
6. Remove wire trough cover.
7. Remove windshield.
8. Remove outer fairing.

INSTALL

NOTE

Figure 1 displays the fairing speaker harness on a fork mounted vehicle. Installation is the similar in Figure 2 for vehicles with a frame mounted fairing.

1. See Figure 1. Connect fairing speaker harness.

- a. Connect connectors (1 and 2).
- b. Disconnect connectors (3, 4).
- c. Connect connectors (5 and 3).
- d. Connect connectors (6 and 4).
- e. Repeat procedure for opposite side.

2. **NOTE**

Make sure wire harness length is sufficient so as not to limit steering movement. Bundle, secure and cable strap any excess harness.

Secure harness with cable straps as needed.

3. Route harness through backbone wire trough.
4. Route [349A] toward right side cover and primary amplifier external harness.
5. Connect [349A] to [349B] of the primary amplifier external harness.

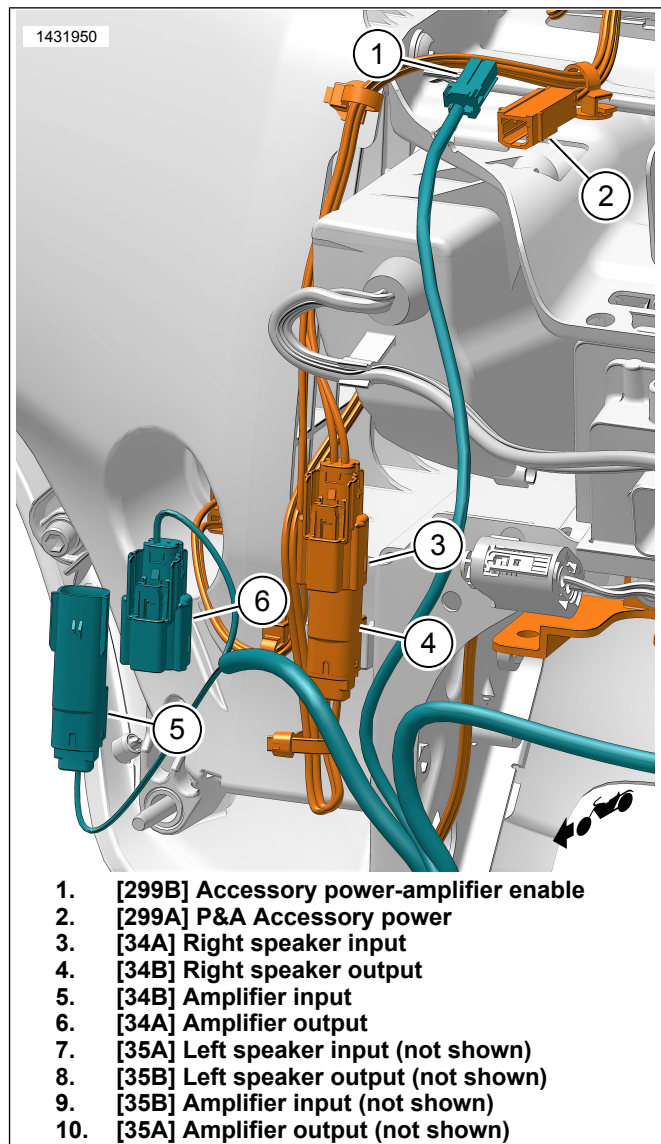


Figure 1. Fork Mounted Speaker Harness (Right Side Shown, Left Similar)

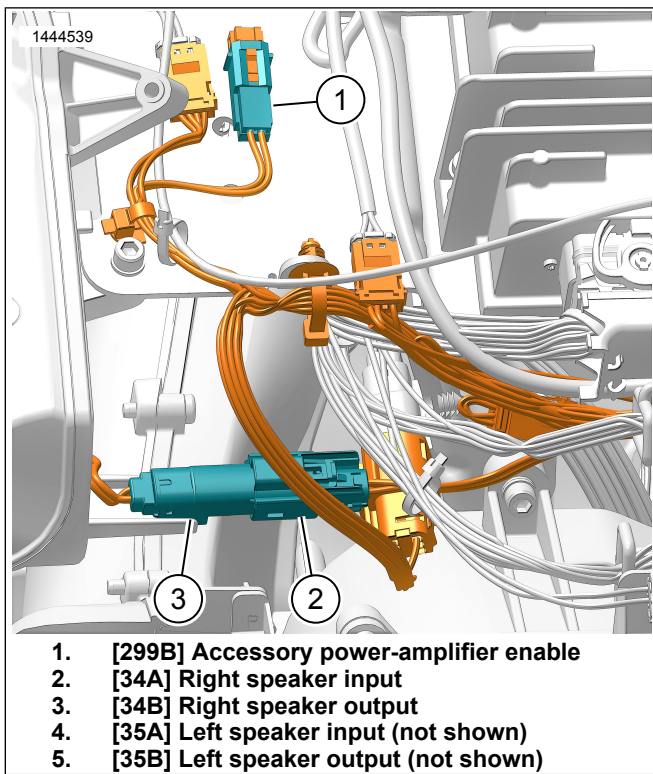


Figure 2. Frame Mounted Speaker Harness (Right Side Shown, Left Similar)

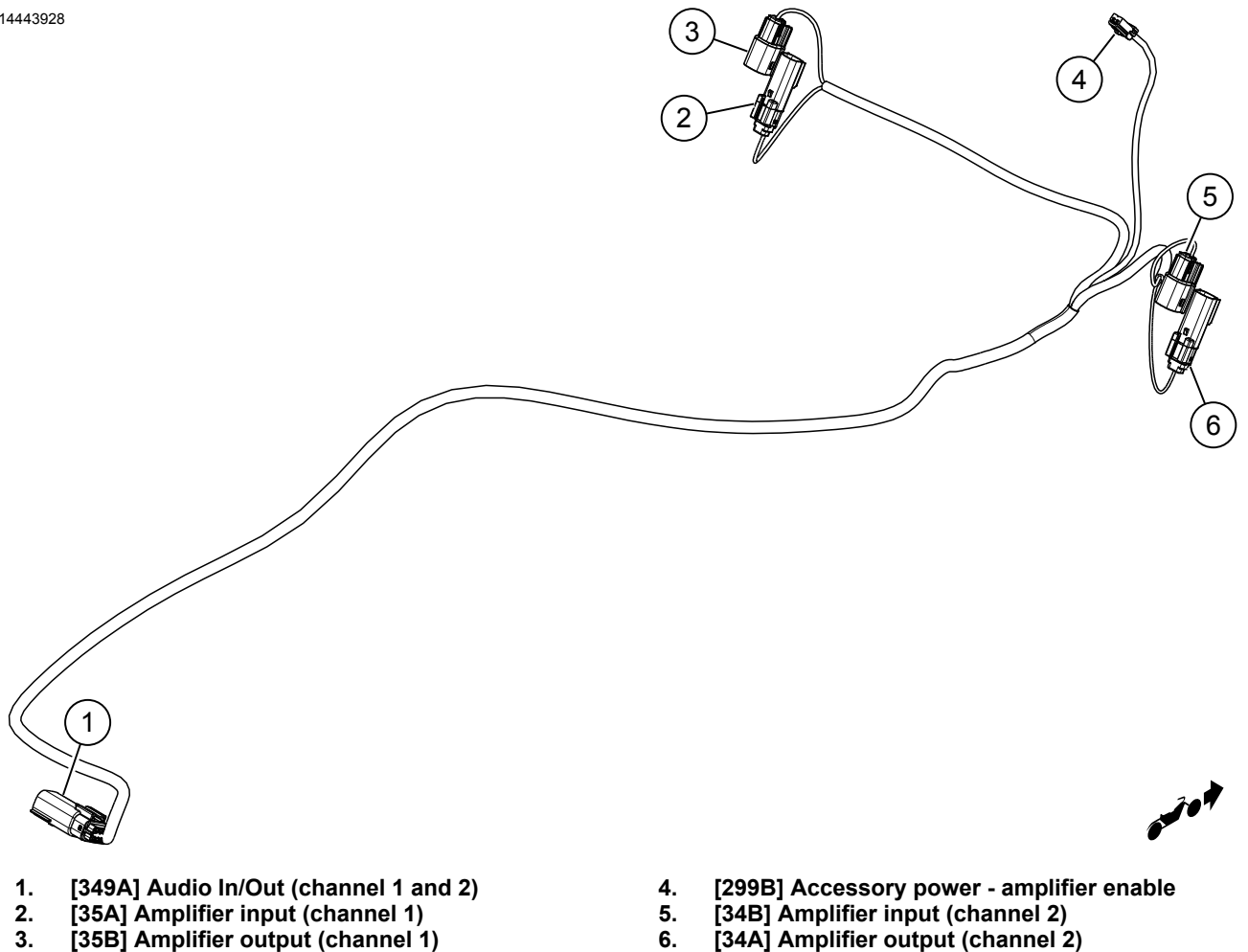


Figure 3. Fairing Speaker Harness

COMPLETE**NOTE**

To prevent possible damage to the sound system, verify that the ignition is OFF before installing the main fuse.

1. Install main fuse.

2.

NOTE

Before installing outer fairing, check that speakers are operating correctly. Understand that buzzing, squeaks and rattles may be heard until outer fairing is installed.

Turn ignition ON, but do not start the vehicle.

3. Make sure that all speakers are working and front/rear fader function is operating correctly. If not, check speaker wiring.

4. Install outer fairing.

5. Install windshield.

6. Install wire trough cover.

7. Install fuel tank.

8. Install seat.

9. Install left and right side covers.

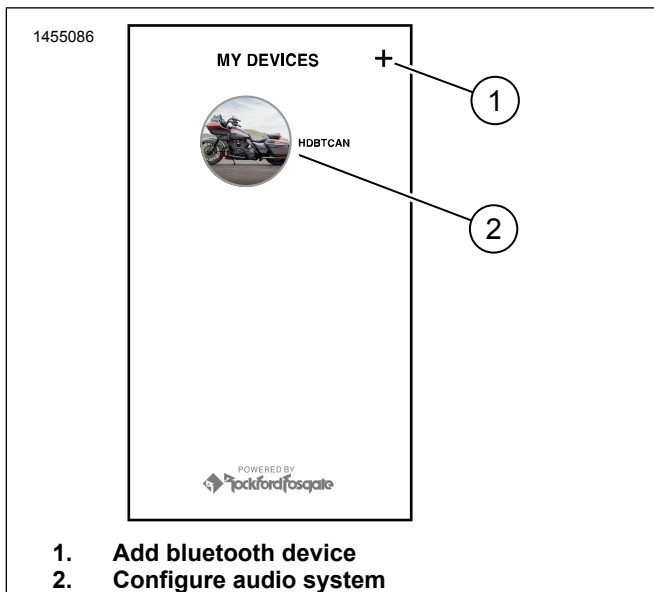
10. Install left and right saddlebags (excludes Tri-Glide).

APP SETUP

1. See Figure 4. Accessing your audio system.

a. Pair device (1) to system.

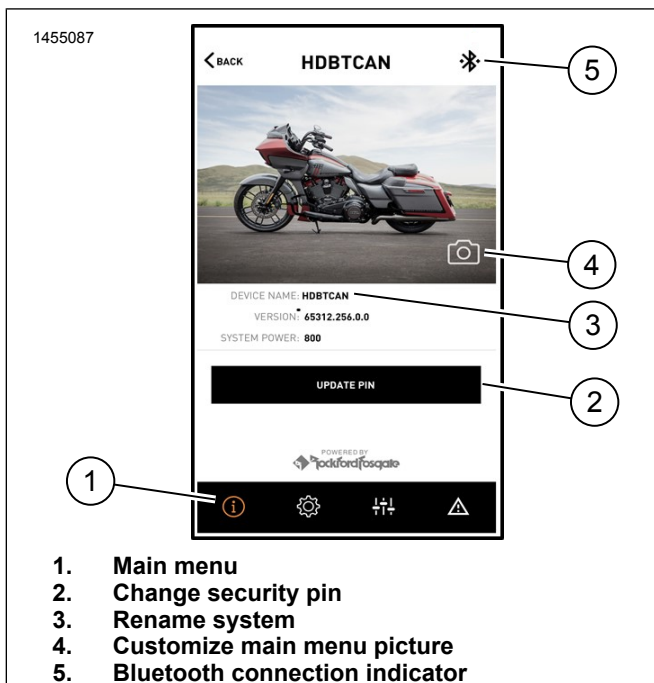
b. Access app menus (2) to setup vehicle sound system.



1. Add bluetooth device
2. Configure audio system

Figure 4. System Access

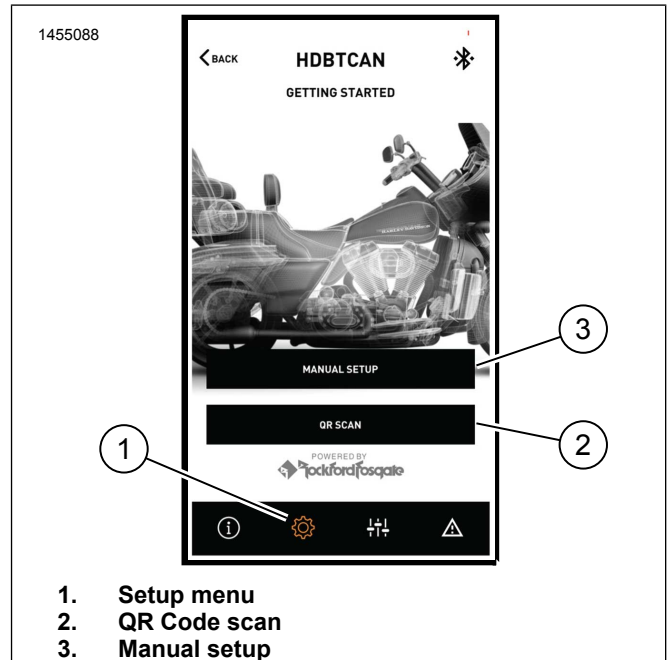
2. See Figure 5. Main menu screen.
 - a. Main menu icon (1).
 - b. Reset or change security personal identification number (PIN) (2).
 - c. Edit and rename your system (3).
 - d. Customize main menu with your bike picture (4).
 - e. Bluetooth connection indicator. Slash through symbol indicates: Not Connected (5).



1. Main menu
2. Change security pin
3. Rename system
4. Customize main menu picture
5. Bluetooth connection indicator

Figure 5. Main Menu

3. See Figure 6. Setup menu screen.
 - a. Setup menu icon (1).
 - b. Use to scan QR code (2) on iSheet.
 - c. Manual setup for Stage 1 or 2 speakers, speaker location and white noise to assign speaker locations.



1. Setup menu
2. QR Code scan
3. Manual setup

Figure 6. Setup Menu

4. See Figure 7. Equalizer setup screen.
 - a. Equalizer setup icon (1)
 - b. Tune 7-Band equalizer (2) frequencies.
 - c. Custom or preset equalizer selections (3).

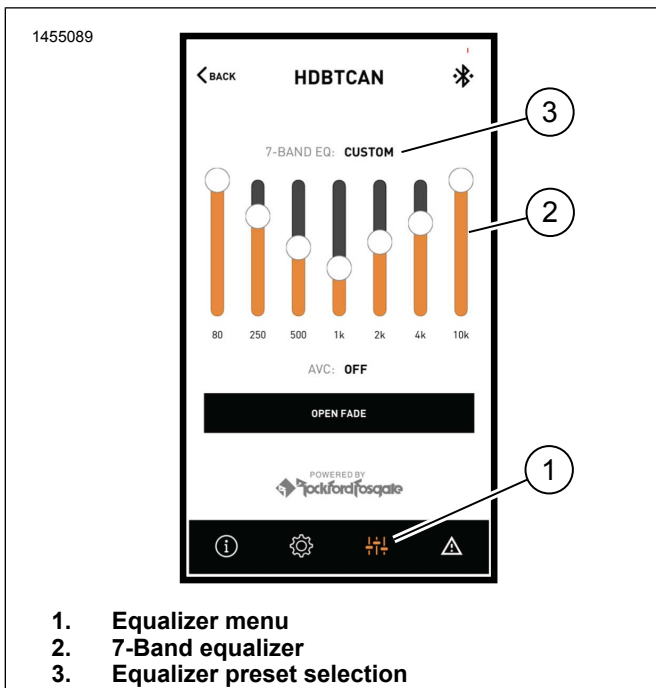


Figure 7. Equalizer Menu

5. See Figure 8. Diagnostic menu screen.
 - a. Diagnostic menu icon (1) displays sound system status.
 - b. Open the speaker testing screen (2).
 - c. Refreshes speaker and amplifier status (3) after component repair.
 - d. Select speaker for white noise (4) test and functionality.
 - e. Return to diagnostic menu screen (5).

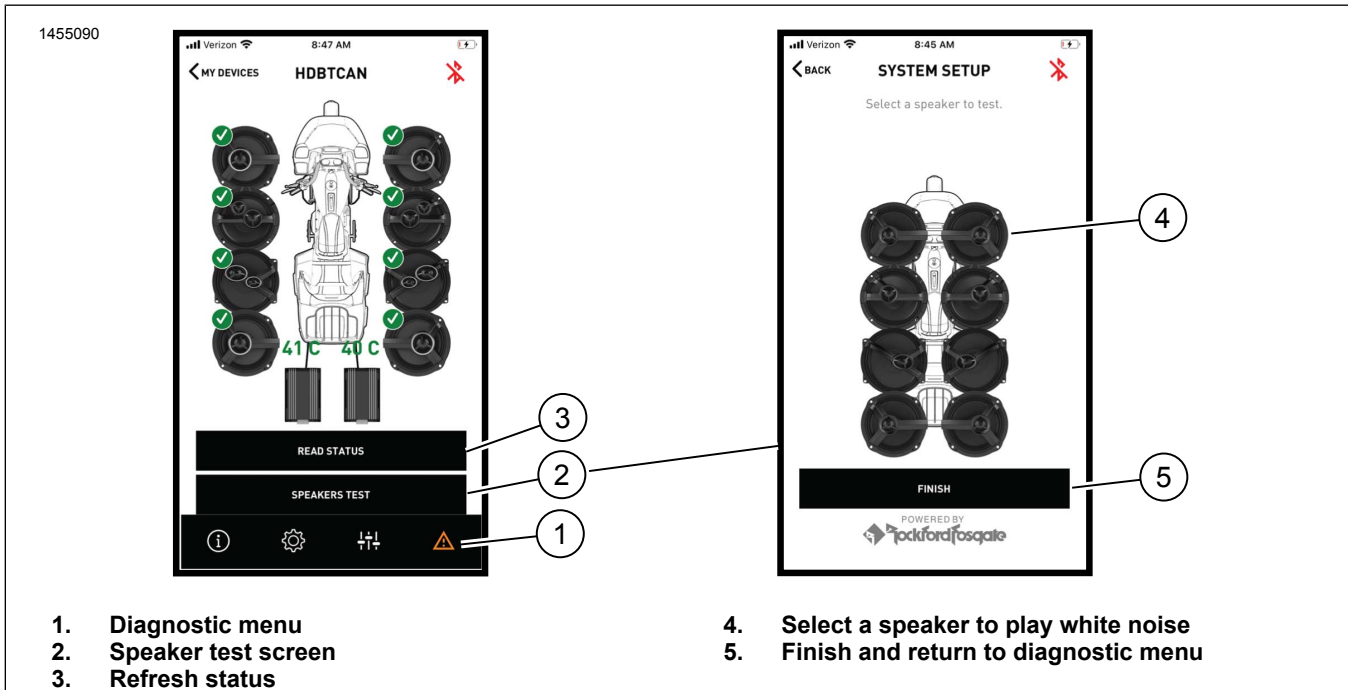


Figure 8. Diagnostic Menu

SERVICE PARTS

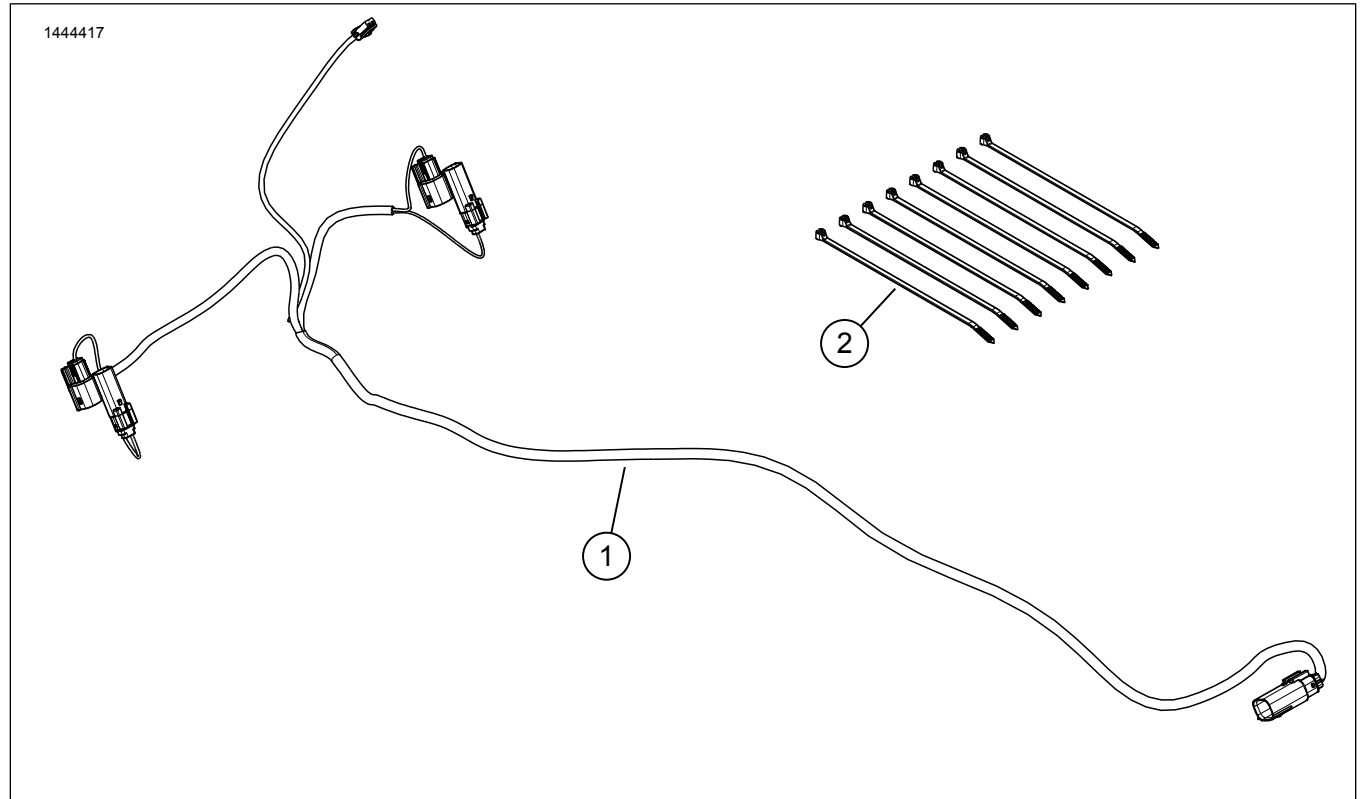


Figure 9. Service Parts, Amplifier Installation Kit

Table 2. Service Parts

Item	Description (Quantity)	Part Number
1	Fairing wire harness	Not sold separately
2	Cable strap (8)	10006