



INSTRUCTIONS





94100152

2021-02-09



PRIMARY AMPLIFIER INSTALLATION KIT - TRI GLIDE (PN 76000976 AND 76001046)

Table 1.

Harley-Davidson Audio Powered by Rockford Fosgate®		
Kits	Suggested Tools	Skill Level
76000976, 76001046	Safety Glasses, Torque Wrench, Power Drill, Drill Bit Set, Masking Tape, Deburring Tool, Isopropyl Alcohol, Clean Shop Rags	   

KIT CONTENTS

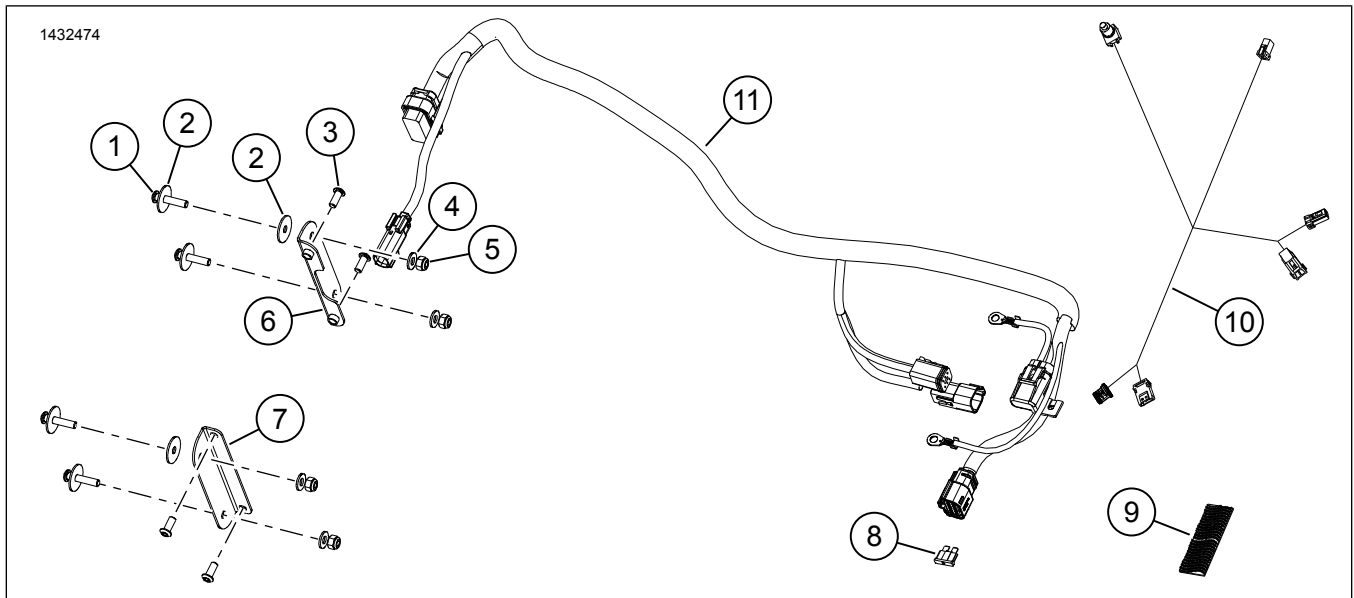


Figure 1. Service Parts: Primary Amplifier Kit

Table 2. Service Parts List: Primary Amplifier Kit

<input checked="" type="checkbox"/>	Item	Qty	Description	Part No.	Notes
<input type="checkbox"/>	1	4	Screw, long	2513	
<input type="checkbox"/>	2	6	Washer, large	6036	
<input type="checkbox"/>	3	4	Screw, short	926	
<input type="checkbox"/>	4	4	Washer, small	6110	
<input type="checkbox"/>	5	4	Lock nut	7686	
<input type="checkbox"/>	6	1	Left amplifier mount	Not sold separately	
<input type="checkbox"/>	7	1	Right amplifier mount	Not sold separately	
<input type="checkbox"/>	8	1	Fuse, 40 amp	72371-95	
<input type="checkbox"/>	9	1	Dual lock	76434-06	
<input type="checkbox"/>	10	1	Bluetooth dongle harness	69202657	
<input type="checkbox"/>	11	1	Amplifier wire harness	Not sold separately	

NOTE

Verify all contents are present in the kit before installing or removing items from vehicle.

GENERAL

NOTE

The newly installed audio system and speakers will not play audio unless it is configured using the Harley-Davidson audio app or by an authorized Harley-Davidson dealership.

NOTE

The various generations of speakers, amplifiers and wiring for Harley-Davidson vehicles were not designed or tested to work together. Please refer to the P&A catalog for fitment recommendations and consult your dealership to ensure optimal performance and compatibility.

The Bluetooth Dongle is a audio communication component. In conjunction with H-D audio app, it can assign amplifiers and speaker channels or enhance the sound by widening the frequency range with an additional equalizer. The dongle **CANNOT** be used as a communications device between your phone and the vehicle's radio.

Installation by a technician at a Harley-Davidson dealership is recommended.

Models

*For model fitment information, see the P&A retail catalog or the Parts and Accessories section of www.harley-davidson.com (English only).

Ensure you are using the most current version of the instruction sheet which is available at: h-d.com/isheets

Contact Harley-Davidson Customer Support Center at 1-800-258-2464 (U.S. only) or 1-414-343-4056.

Electrical Overload

▲ WARNING

When installing any electrical accessory, be certain not to exceed the maximum amperage rating of the fuse or circuit breaker protecting the affected circuit being modified. Exceeding the maximum amperage can lead to electrical failures, which could result in death or serious injury. (00310a)

NOTICE

It is possible to overload the vehicle's charging system by adding too many electrical accessories. If the combined electrical accessories operating at any one time consume more electrical current than the vehicle's charging system can produce, the electrical consumption can discharge the battery and cause damage to the vehicle's electrical system. (00211d)

This amplifier requires up to **8 amps** more current from the electrical system.

Installation Requirements

Download Harley-Davidson audio app.

Use this kit in conjunction with other **Harley-Davidson Audio powered by Rockford Fosgate®** kits.

This kit is for use **ONLY** on **2014 and later** Harley-Davidson audio systems.

These items are available at your Harley-Davidson dealership:

- **2014 and Later Trike:** Separate purchase of Harley-Davidson Power Extension Harness (Part No. 69200921) may be required. Use this when multiple electrical accessories are installed on the vehicle.

- **2014 and Later Touring:** Separate purchase of Harley-Davidson Primary Amplifier and Dongle Kit (Part No. 76000997) is required for this installation.

⚠ WARNING

Rider and passenger safety depend upon the correct installation of this kit. Use the appropriate service manual procedures. If the procedure is not within your capabilities or you do not have the correct tools, have a Harley-Davidson dealer perform the installation. Improper installation of this kit could result in death or serious injury. (00333b)

Installation by a technician at a Harley-Davidson dealership is recommended.

PREPARE

NOTE

This instruction sheet references service manual information. A service manual for this year/model motorcycle is required for this installation. One is available from a Harley-Davidson dealer.

1. Remove seat. See service manual.
2. Remove side covers. See service manual.
3. Remove main fuse. See service manual.
4. Remove passenger grab rail. See service manual.
5. Remove body and place on protective pad. Fenders and Tour-Pak can remain attached to the body. See service manual.

TRUNK

1. See Figure 2. Install amplifier mount brackets.
 - a. Install brackets (6, 9) to amplifier (3).
 - b. Install screws (4). Tighten.
Torque: 5 N·m (44 **in-lbs**) *Amplifier mount bracket screws*
2. Drill holes in trike body.
 - a. Position amplifier with brackets over the four raised pads.
 - b. Position connector toward the left.
 - c. Center lower holes over the lower pads.
 - d. Mark hole locations.
 - e. Remove amplifier with brackets.
 - f. Drill four 9/32 in (7.2 mm) holes.

NOTE

Make sure amplifier connector is installed facing the vehicle's left side.

See Figure 2. Install amplifier with brackets.

- a. Position amplifier (3) with brackets (6, 9) over the four raised pads.
- b. Install two large washers (2) on top screws (1).
- c. Install one large washer (2) on lower screws (1).
- d. Install screws from inside the trunk.
- e. Install small washers (7) and nuts (8) from outside the truck. Tighten.

Torque: 11–12 N·m (97–106 **in-lbs**) *Amplifier mount bracket nuts*

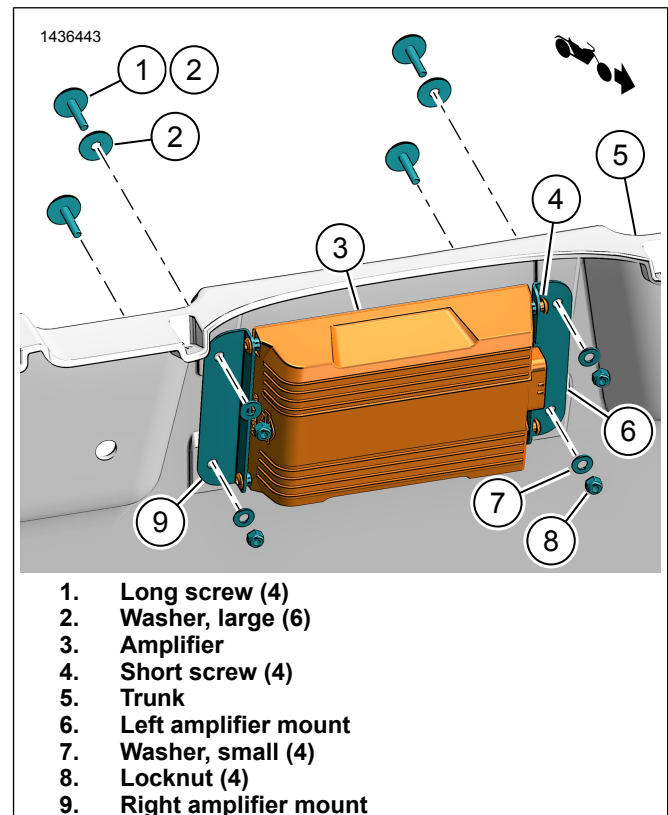


Figure 2. Amplifier Mount Brackets

WIRE HARNESS

1. See Figure 3. Connect connector [149B] to amplifier.
2. Route wire harness along frame.
 - a. Start at the front of vehicle.
 - b. Using cable straps loosely install harness.
 - c. Do not tighten cable straps.
3. See Figure 4 or Figure 5. Route harness branch connectors (3, 4) behind battery box area.
4. **2014-2016 Models:**
 - a. Locate data link connector [91A] in left side caddy.

- b. Lift locking tab. Slide the BCM with attached connector out of the left side caddy.

NOTE

DO NOT remove the connector from the Body Control Module (BCM). Make sure the main fuse has been removed if there is a need to disconnect the BCM connector.

- c. Remove connector [91A] from caddy.
- d. Remove weather cap from the connector [91A].
- e. See Figure 4. Connect gray socket housing on amplifier harness [91B] (12) to vehicle connector [91A].
- f. Place [91A] (13) from external harness on top of [91B]. Secure with cable straps.
- g. Replace weather cap from vehicle [91A] to external harness [91A].
- h. Install BCM with connector attached into left side caddy.

5. 2017-2018 Models:

- a. See Figure 3. Locate vehicle connector [319A] and terminating resistor cap near the right side cover area.
- b. See Figure 5. Route connectors [319A] (3) and [319B] (4) toward right side cover to [349B] (7).
- c. Connect amplifier harness connectors (3 and 4) to vehicle.
- d. Amplifier harness [319A] to vehicle [319B].
- e. Amplifier harness [319B] to terminating resistor cap [319A].

6. 2019 and Later Models:

- a. See Figure 3. Locate vehicle connector [319A] and terminating resistor cap near the right side cover area.
- b. See Figure 5. Route connectors [319A] (3) and [319B] (4) under passenger seat. Remove cable strap to route branch towards rear of vehicle.
- c. Connect amplifier harness connectors (3 and 4) to vehicle.
- d. Amplifier harness [319A] to vehicle [319B].
- e. Amplifier harness [319B] to terminating resistor cap [319A].

7. See Figure 3. Route items 5-9 in front of battery and toward the right side cover.
8. Connect negative battery wire (6).
9. Connect positive battery wire (5).
10. Secure amplifier fuse holder (8) with cable strap.
11. See Figure 3. Route harness with amplifier connector over left side of frame.

12.

NOTE

There is no access to the amplifier connector once the trike body is fully installed.

Install body to vehicle. See service manual.

- a. Connect [149B] to amplifier.

13. Install fuse (9) into fuse holder (8).
14. Secure rest of harness with cable straps as needed.

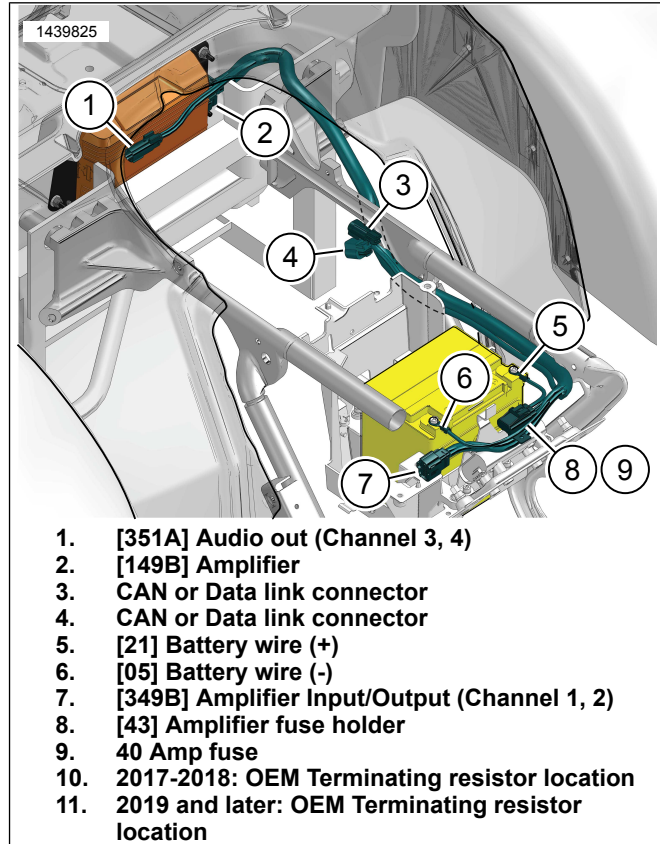
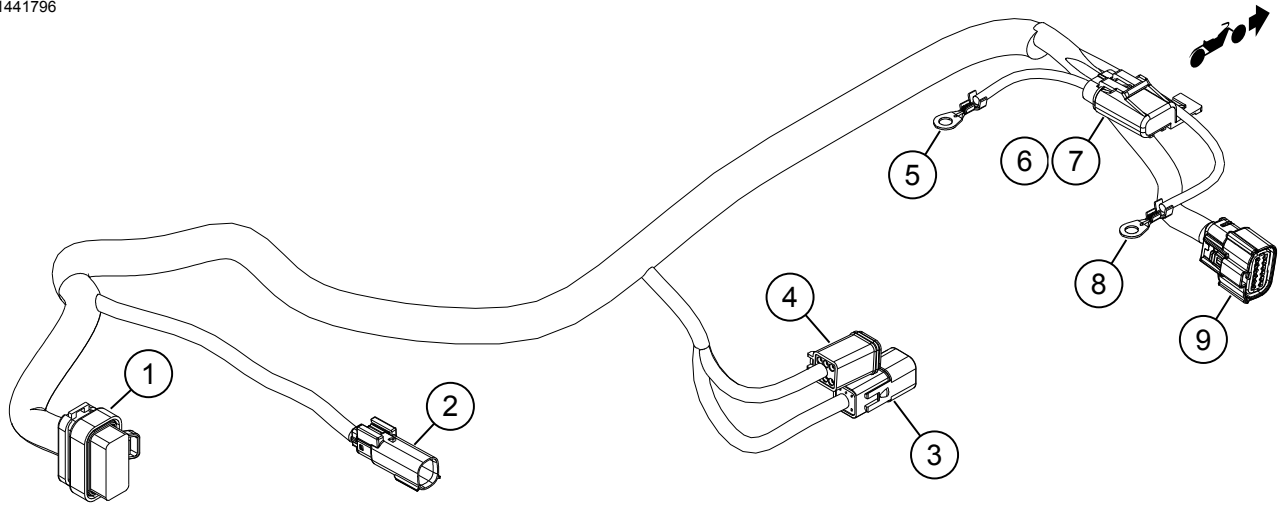


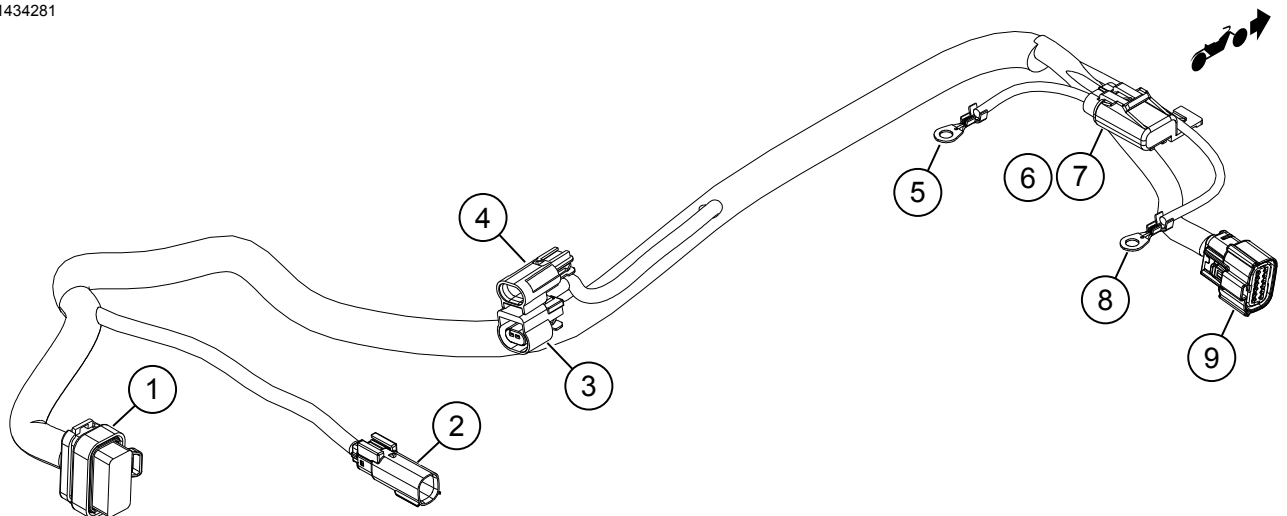
Figure 3. Amplifier Wire Harness Routing



1. [149B] Amplifier
2. [351A] Audio out (Channel 3, 4)
3. [91A] Data link connector
4. [91B] Data link connector
5. [21] Battery wire (+)

6. [43] Amplifier fuse holder
7. 40 Amp fuse
8. [05] Battery wire (-)
9. [349B] Amplifier Input/Output (Channel 1, 2)

Figure 4. Amplifier Harness (2014-2016)



1. [149B] Amplifier
2. [351A] Audio out (Channel 3, 4)
3. [319B] CAN
4. [319A] CAN
5. [21] Battery wire (+)

6. [43] Amplifier fuse holder
7. 40 Amp fuse
8. [05] Battery wire (-)
9. [349B] Amplifier Input/Output (Channel 1, 2)

Figure 5. Amplifier Harness (2017 and Later)

BLUETOOTH DONGLE HARNESS (2014 and Later)

NOTE

This procedure excludes CVO models.

1. See Figure 6. Install and route bluetooth dongle harness under fairing.

2. Locate vehicle connectors: [22-1] and [299].

- a. Disconnect connectors.

3. Connect bluetooth dongle harness to vehicle.

- a. [22-1A] to [22-1B].

- b. [22-1B] to vehicle fairing harness [22-1A] right hand control.

c. [299B] to [299A]

NOTE

Use Part No. 69200921 extension harness as needed.

4. Connect bluetooth dongle (1) to bluetooth dongle harness (2).

a. [353B]

b. Secure dongle (1) to fairing support structure with dual lock tape.

5. **NOTE**

Vehicle to Bluetooth component should only be paired once unless a new Bluetooth device is being added or because of system component failure.

The Bluetooth dongle (1) can only be paired to one mobile device at a time. The dongle can be unpaired by either the audio app or pressing the pair switch (7) located on the harness.

Mount the pair switch (7) where it cannot be accidentally actuated during vehicle operation.

Route and secure pairing switch (7).

a. Inside fairing near steering head.

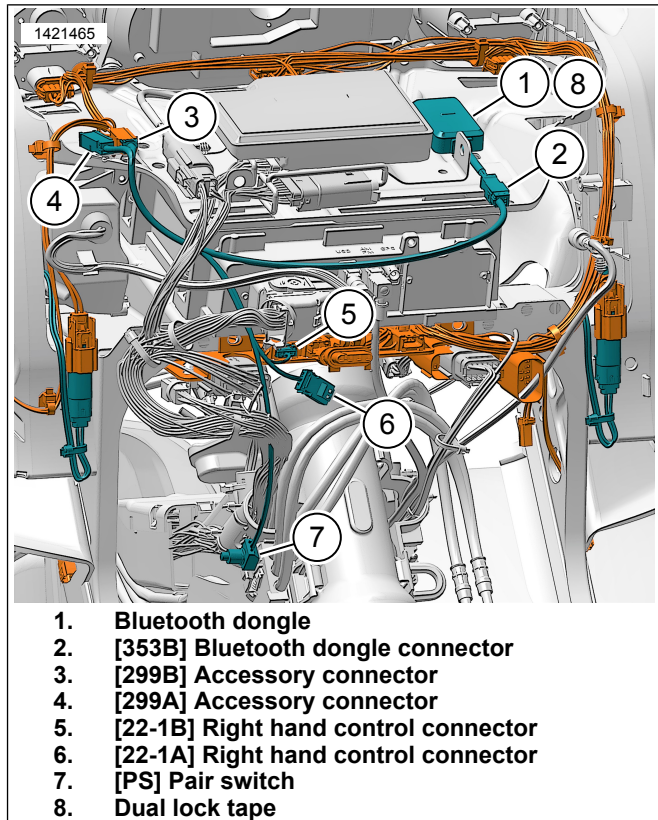


Figure 6. Fork Mounted Fairing Bluetooth Dongle Harness (2014 and later)

SPEAKER CONNECTIONS

Channel 1 and 2 (Fairing)

1. See fairing speaker installation kit for routing and connections associated with that kit.
2. **Channel 1:** Left fairing speaker.
3. **Channel 2:** Right fairing speaker.
4. Connect fairing speaker wire harness to external harness [349B].

Channel 3 and 4 (Tour-Pak)

1. See the appropriate speaker installation kit for routing and connections associated with that kit.
2. **Channel 3:** Left speaker.
3. **Channel 4:** Right speaker.
4. Connect the Tour-Pak wire harness to external harness [351A].

Table 3. Amplifier Channel Assignments

Assignments	Channels	Fairing Speakers	Saddlebag Speakers	Tour-Pak Speakers	Fairing Lower Speakers
Primary Amplifier Tri-Glide	1 and 2	X			
	3 and 4		Not Applicable	X	Not Applicable

APP SETUP

NOTE

Vehicle to Bluetooth component should only be paired once unless a new Bluetooth device is being added or because of system component failure.

The Bluetooth dongle can only be paired to one mobile device at a time. The dongle can be unpaired by either the audio app or pressing the pair switch located on the harness.

1. See Figure 7. Accessing your audio system.
 - a. Pair device (1) to system.
 - b. Access app menus (2) to setup vehicle sound system.

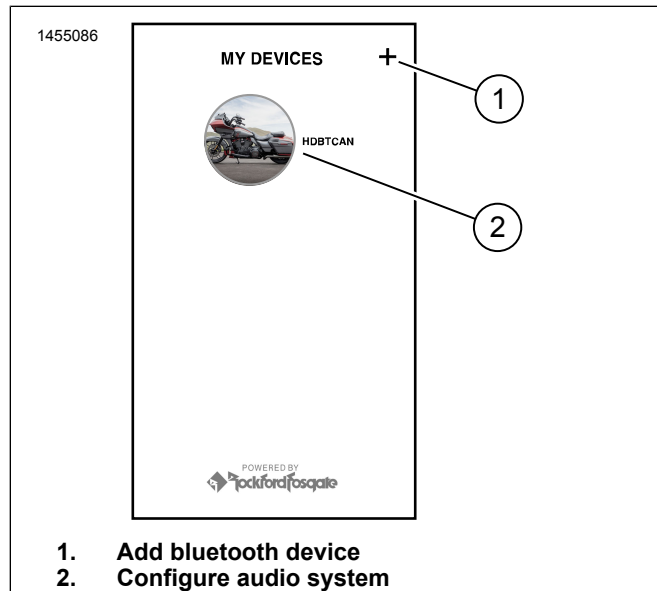


Figure 7. System Access

2. See Figure 8. Main menu screen.
 - a. Main menu icon (1).
 - b. Reset or change security personal identification number (PIN) (2).
 - c. Edit and rename your system (3).
 - d. Customize main menu with your bike picture (4).
 - e. Bluetooth connection indicator. Slash through symbol indicates: Not Connected (5).

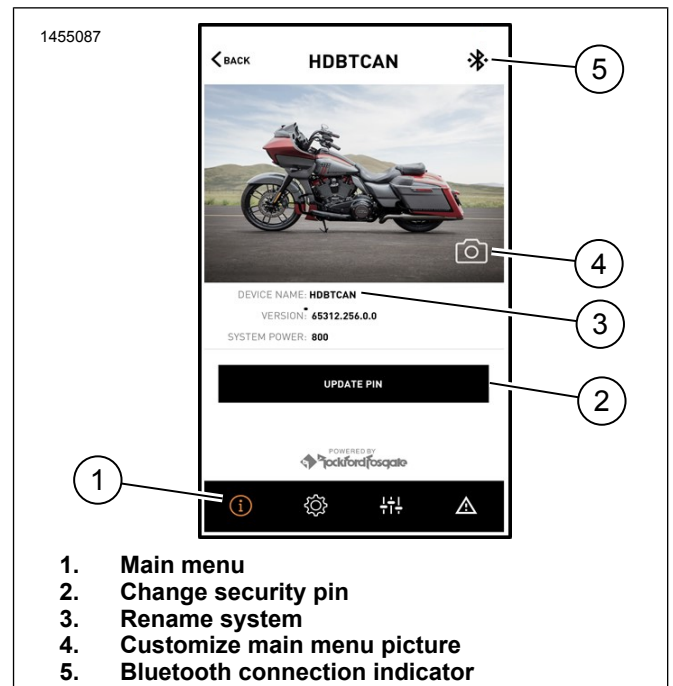


Figure 8. Main Menu

3. See Figure 9. Setup menu screen.
 - a. Setup menu icon (1).
 - b. Use to scan QR code (2) on iSheet.
 - c. Manual setup for Stage 1 or 2 speakers, speaker location and white noise to assign speaker locations.

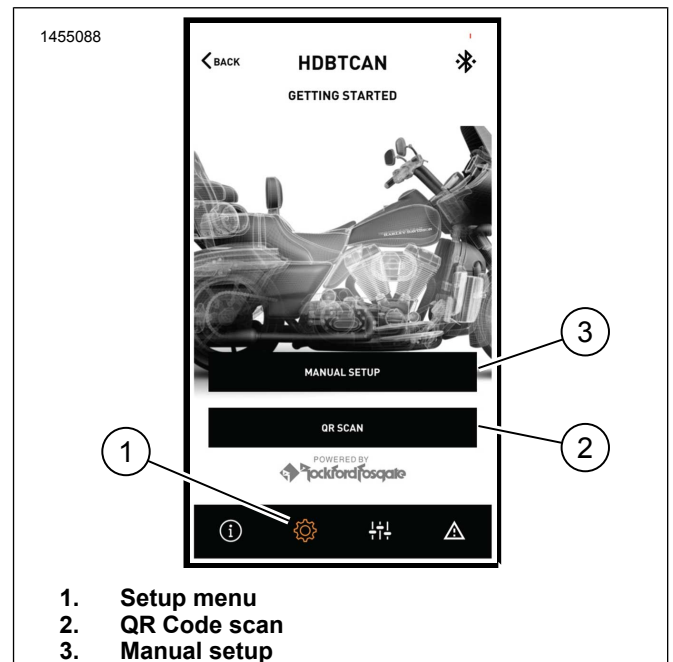


Figure 9. Setup Menu

4. See Figure 10. Equalizer setup screen.
 - a. Equalizer setup icon (1)
 - b. Tune 7-Band equalizer (2) frequencies.

c. Custom or preset equalizer selections (3).

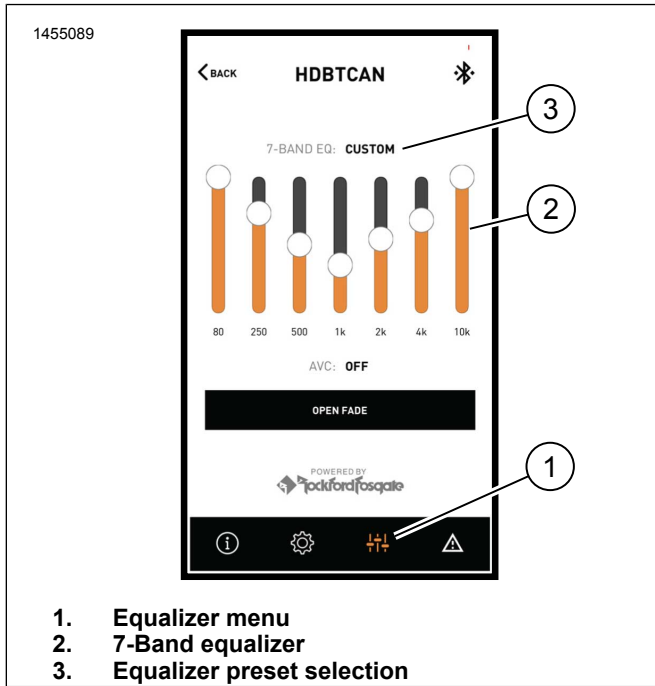


Figure 10. Equalizer Menu

5. See Figure 11. Diagnostic menu screen.

- Diagnostic menu icon (1) displays sound system status.
- Open the speaker testing screen (2).
- Refreshes speaker and amplifier status (3) after component repair.
- Select speaker for white noise (4) test and functionality.
- Return to diagnostic menu screen (5).

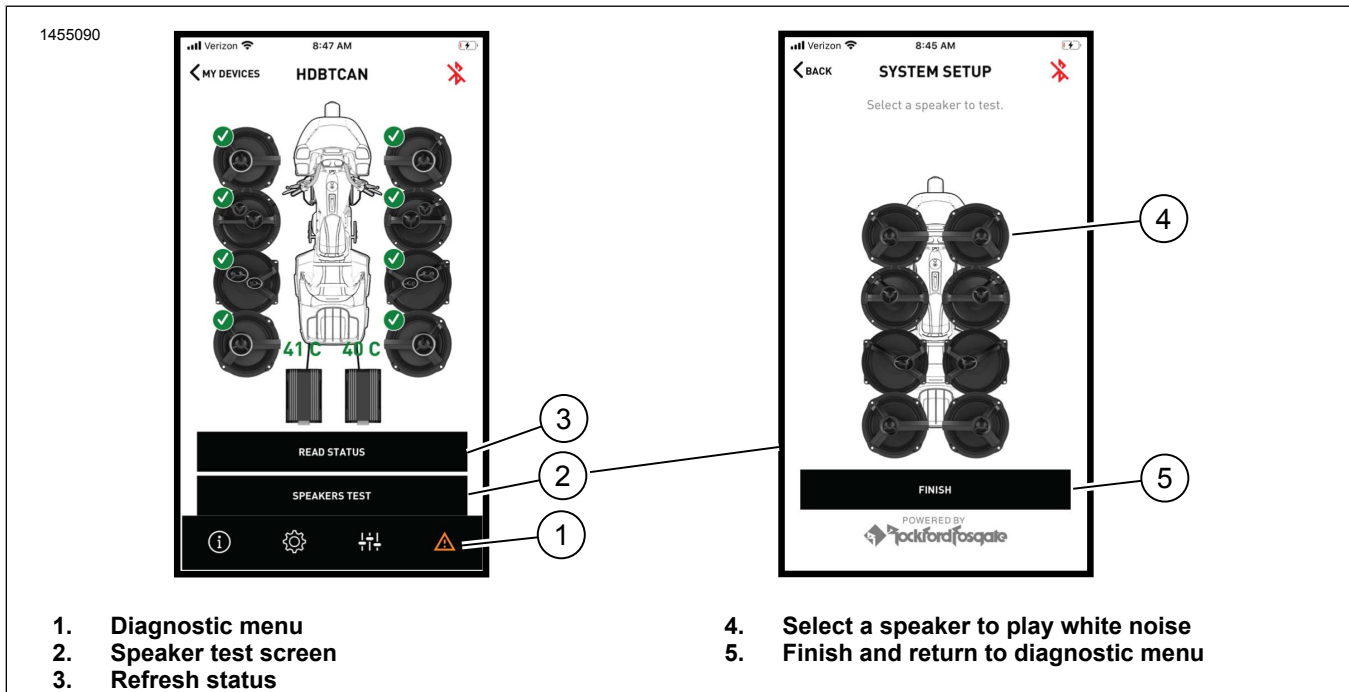


Figure 11. Diagnostic Menu

COMPLETE

- Install passenger grab rail. See service manual.
- Install main fuse. See service manual.
- Install side covers. See service manual.
- Install seat. See service manual.