



INSTRUCTIONS

94100153

2021-10-22



TOUR-PAK SPEAKER HARNESS INSTALL KIT (PN 76000977)

GENERAL

NOTE

The newly installed audio system and speakers will not play audio unless it is configured using the Harley-Davidson audio app or by an authorized Harley-Davidson dealership.

Table 1.

| Harley-Davidson Audio Powered by Rockford Fosgate® | |
|--|---------|
| Kit | QR Code |
| 76000977 | N/A |

NOTE

The various generations of speakers, amplifiers and wiring for Harley-Davidson vehicles were not designed or tested to work together. Please consult your dealership to ensure optimal performance and compatibility.

Models

For model fitment information, see the P&A retail catalog or the Parts and Accessories section of <http://www.harley-davidson.com> (English only).

Ensure you are using the most current version of the instruction sheet which is available at: h-d.com/isheets

Contact Harley-Davidson Customer Support Center at 1-800-258-2464 (U.S. only) or 1-414-343-4056.

Installation Requirements

Download Harley-Davidson audio app.

Use this kit in conjunction with other Harley-Davidson Audio powered by Rockford Fosgate® kits.

This harness is for use ONLY on 2014 and later Harley-Davidson audio systems.

These items are available at your Harley-Davidson dealership.

- Separate purchase of Heat Shrink Tubing (Part No. 72411-97).
- **2014 and Later FLHTKSE, FLTRUSE and Touring:** Separate purchase of Harley-Davidson Primary Amplifier and Dongle Kit (Part No. 76000997) is required for this installation.
- **2014 and Later FLHTKSE, FLTRUSE and Touring:** Separate purchase of Harley-Davidson Primary Amplifier Installation Kit (Part No. 76000974 or 76001045) is required for this installation.

- **2014 and Later FLHTKSE, FLTRUSE and Touring:** Separate purchase of Harley-Davidson Secondary Amplifier Installation Kit (Part No. 76000975) may be required for this installation. This depends if there are six or more speakers and how the amplifier channels are assigned.
- **2014 and Later Tri Glide:** Separate purchase of Harley-Davidson Primary Amplifier Installation Kit (Part No. 76000976 or 76001046) is required for this installation.
- **2014 and Later FLHTKSE, FLTRUSE and Touring:** Separate purchase of Harley-Davidson Stage 1 & 2 Speaker Kit - Air cooled Fairing Lower or Tour-Pak (Part No. 76000984 or 76000985) may be required for this installation.

⚠ WARNING

Rider and passenger safety depend upon the correct installation of this kit. Use the appropriate service manual procedures. If the procedure is not within your capabilities or you do not have the correct tools, have a Harley-Davidson dealer perform the installation. Improper installation of this kit could result in death or serious injury. (00333b)

Installation by a technician at a Harley-Davidson dealership is recommended.

Kit Contents

See Figure 8 and Table 2.

PREPARE

⚠ WARNING

To prevent accidental vehicle start-up, which could cause death or serious injury, remove main fuse before proceeding. (00251b)

NOTE

This instruction sheet references service manual information. A service manual for this year/model motorcycle is required for this installation. One is available from a Harley-Davidson dealer.

1. Remove left and right saddlebags (excludes Tri-Glide).
2. Remove left and right side covers.
3. Remove main fuse.

NOTE

Models with security: Disable security system.

4. Remove seat.

REMOVE

1. Remove OEM speaker.
 - a. Remove and discard screws.
 - b. Remove and discard speaker grille.
 - c. Remove speaker and disconnect terminals.
2. Remove OEM grommet from speaker pod.
3. Remove OEM speaker wire harness from speaker pod.
4. Cut off OEM speaker connectors, wrap exposed terminals and secure harness.
 - a. Install a section of heat shrink tubing and make sure terminals are isolated.
5. Remove OEM captive nuts from speaker pod and discard.
 - a. Remove nuts from the bottom within the pod.
6. Repeat procedure for opposite side.

INSTALL

1. See Figure 1. Install captive nuts (2).
 - a. Install nuts to the bottom within the pod.
2. Route harness speaker terminals (3) from kit with OEM speaker pod wire harness.
 - a. Secure both harnesses together with cable strap.
3. Route speaker terminals (3) through grommet (1) into speaker pod.
 - a. Cut grommet and wrap it around the harnesses.
 - b. Install harness with grommet (1) into speaker pod.
 - c. Supply enough harness to connect the speaker terminals.
4. Repeat procedure for opposite side.
5. Route remaining harness along the right frame of the vehicle.
6. Route [351B] toward right side cover and primary amplifier external harness.
7. Connect [351B] to [351A] of the primary amplifier external harness.
 - a. **Primary amplifier** [351A] of the primary amp if there is only 1 amplifier present.
 - b. b. to either [352A_1] or [352A_2] of the secondary amp if there are 2 amplifiers present.

8. Secure wire harness with cable straps.
9. See Figure 2. Install and tighten screws (1).
 - a. Speaker and grille must be installed from associated kit.
10. Repeat procedure for opposite side.

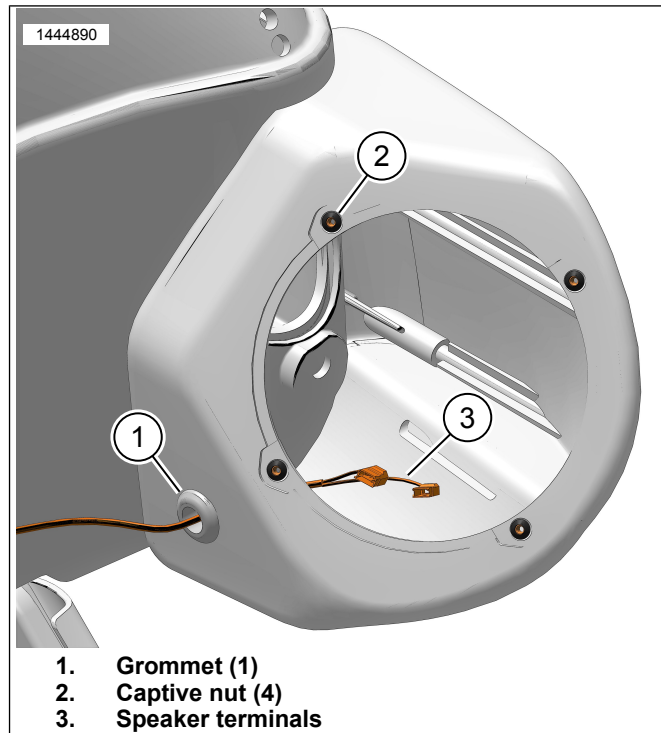


Figure 1. Speaker Pod Wire Harness (Left Side Shown)

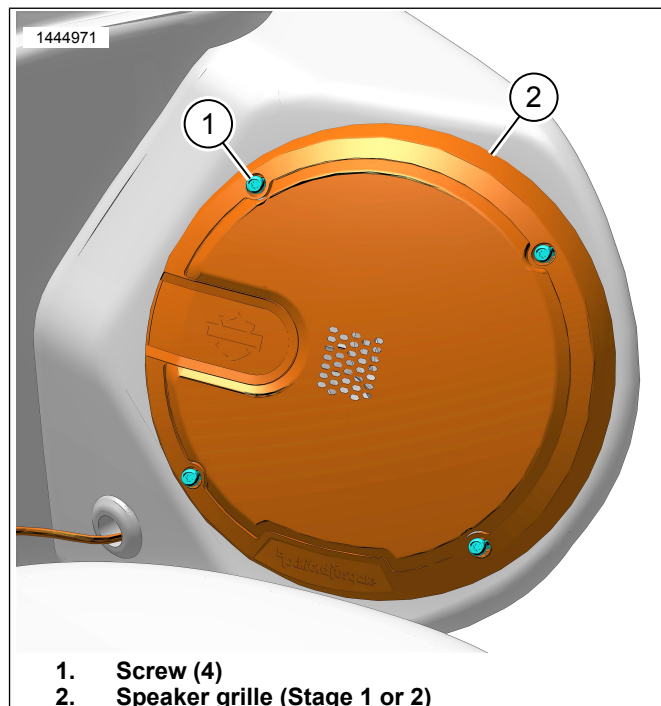


Figure 2. Speaker Pod Grille (Left Side Shown)

COMPLETE

NOTE

To prevent possible damage to the sound system, verify that the ignition is OFF before installing the main fuse.

1. Install main fuse.
2. Turn ignition ON, but do not start the vehicle.
3. Make sure that all speakers are working and front/rear fader function is operating correctly. If not, check speaker wiring.
4. Install seat.
5. Install left and right side covers.
6. Install left and right saddlebags (excludes Tri-Glide).

APP SETUP

1. See Figure 3. Accessing your audio system.
 - a. Pair device (1) to system.
 - b. Access app menus (2) to setup vehicle sound system.

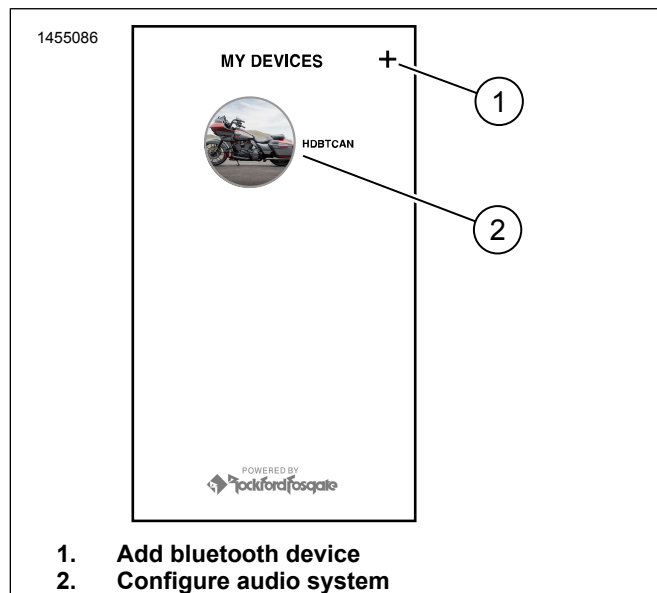


Figure 3. System Access

2. See Figure 4. Main menu screen.
 - a. Main menu icon (1).
 - b. Reset or change security personal identification number (PIN) (2).
 - c. Edit and rename your system (3).
 - d. Customize main menu with your bike picture (4).
 - e. Bluetooth connection indicator. Slash through symbol indicates: Not Connected (5).

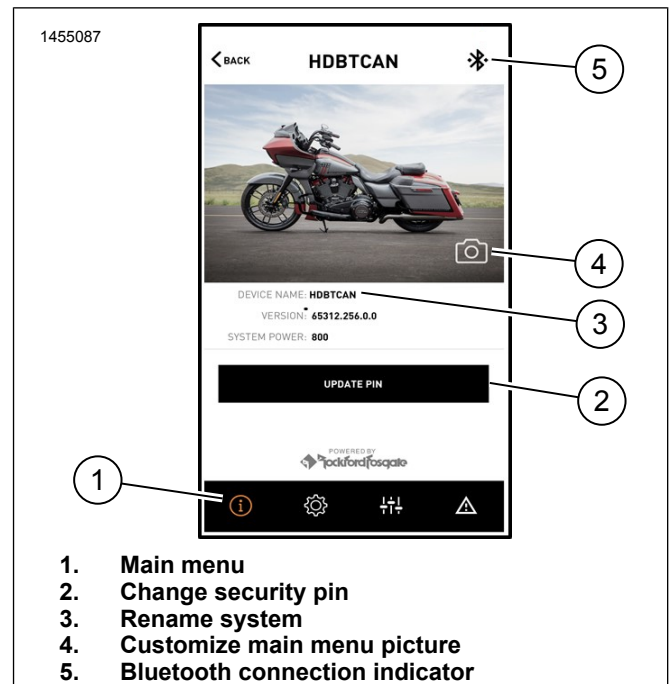


Figure 4. Main Menu

3. See Figure 5. Setup menu screen.
 - a. Setup menu icon (1).
 - b. Use to scan QR code (2) on iSheet.
 - c. Manual setup for Stage 1 or 2 speakers, speaker location and white noise to assign speaker locations.

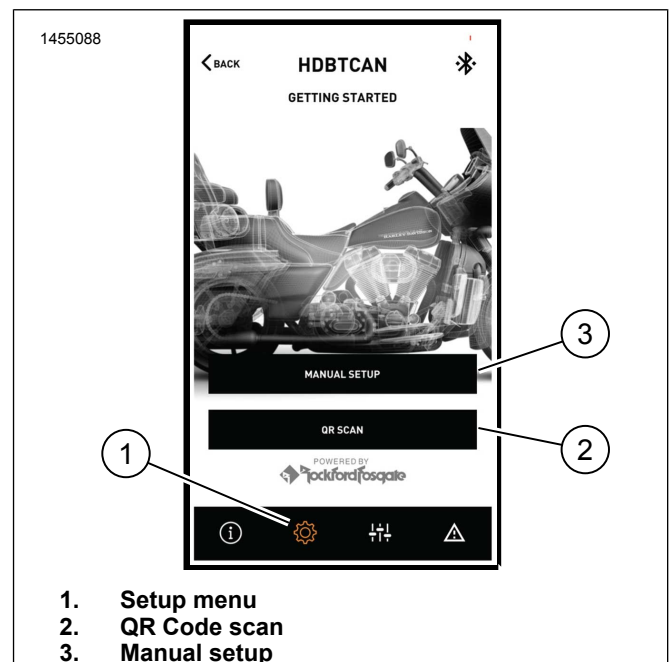
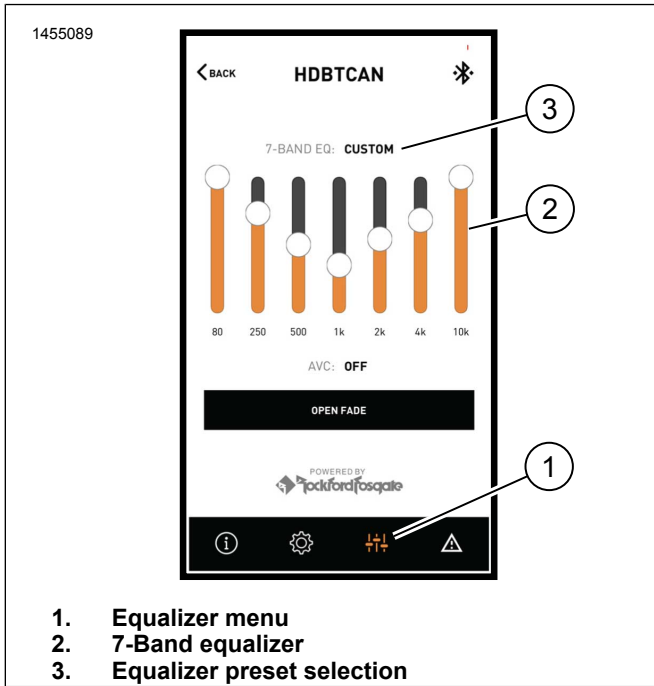


Figure 5. Setup Menu

4. See Figure 6. Equalizer setup screen.
 - a. Equalizer setup icon (1)
 - b. Tune 7-Band equalizer (2) frequencies.

c. Custom or preset equalizer selections (3).

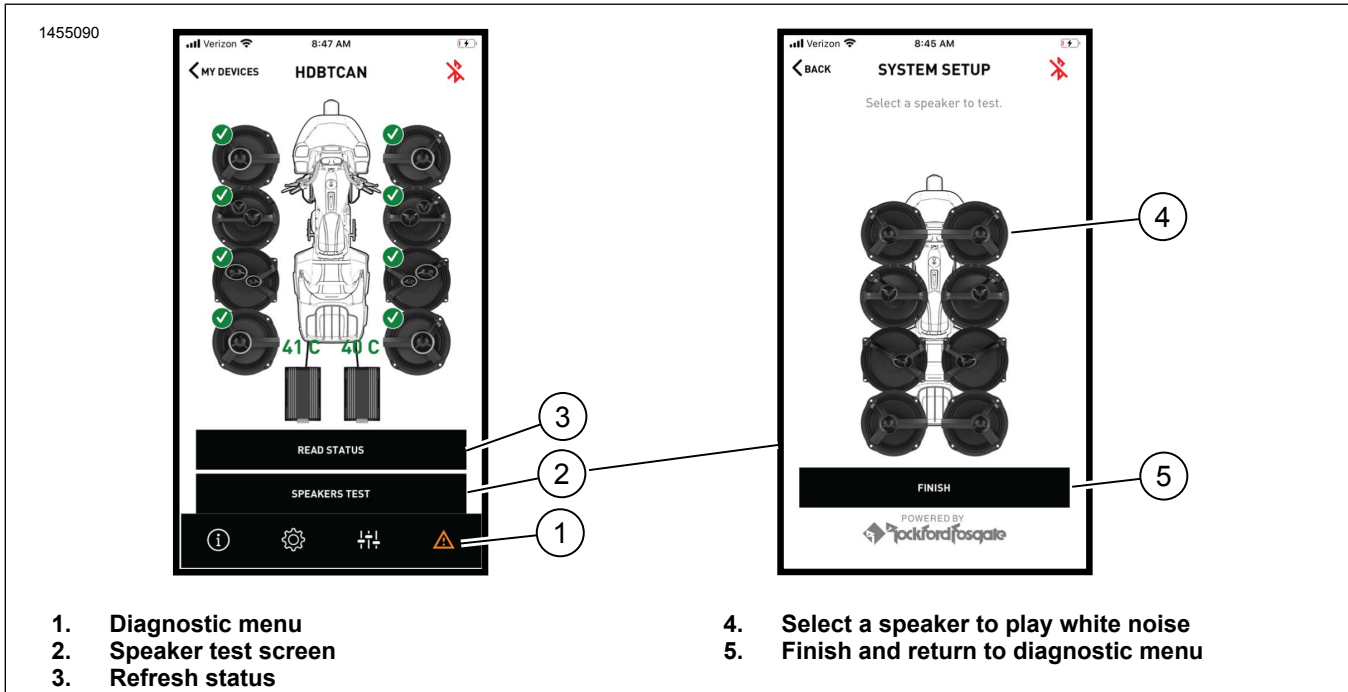


1. Equalizer menu
2. 7-Band equalizer
3. Equalizer preset selection

Figure 6. Equalizer Menu

5. See Figure 7. Diagnostic menu screen.

- a. Diagnostic menu icon (1) displays sound system status.
- b. Open the speaker testing screen (2).
- c. Refreshes speaker and amplifier status (3) after component repair.
- d. Select speaker for white noise (4) test and functionality.
- e. Return to diagnostic menu screen (5).



1. Diagnostic menu
2. Speaker test screen
3. Refresh status

4. Select a speaker to play white noise
5. Finish and return to diagnostic menu

Figure 7. Diagnostic Menu

SERVICE PARTS

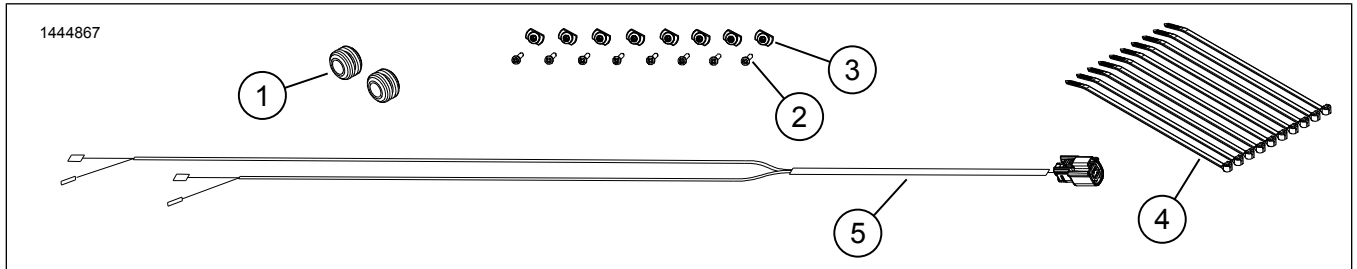


Figure 8. Service Parts, Fairing Lower Speakers

Table 2. Service Parts

| Item | Description (Quantity) | Part Number | Kit Number |
|------|------------------------|---------------------|------------|
| 1 | Grommet | 12100118 | 76000977 |
| 2 | Screw (8) | 10200294 | 76000977 |
| 3 | Captive nut (8) | 10100064 | 76000977 |
| 4 | Cable strap (10) | 10006 | 76000977 |
| 5 | Speaker wire harness | Not sold separately | 76000977 |