



INSTRUCTIONS

94100154

2022-01-21



AIR COOLED FAIRING LOWER SPEAKER HARNESS INSTALL KIT (PN 76000978)

GENERAL

NOTE

The newly installed audio system and speakers will not play audio unless it is configured using the Harley-Davidson audio app or by an authorized Harley-Davidson dealership.

Table 1.

Harley-Davidson Audio Powered by Rockford Fosgate®	
Kit	QR Code
76000978	N/A

NOTE

The various generations of speakers, amplifiers and wiring for Harley-Davidson vehicles were not designed or tested to work together. Please consult your dealership to ensure optimal performance and compatibility.

Models

For model fitment information, see the P&A retail catalog or the Parts and Accessories section of <http://www.harley-davidson.com> (English only).

Ensure you are using the most current version of the instruction sheet which is available at: h-d.com/isheets

Contact Harley-Davidson Customer Support Center at 1-800-258-2464 (U.S. only) or 1-414-343-4056.

Installation Requirements

Download Harley-Davidson audio app.

Use this kit in conjunction with other **Harley-Davidson Audio powered by Rockford Fosgate®** kits.

This harness is for use **ONLY** on **2014 and later** Harley-Davidson audio systems.

These items are available at your Harley-Davidson dealership.

- **2014 and Later Touring:** Separate purchase of Harley-Davidson Color Matched Fairing Lower Speaker Front Enclosure (Part No. 57100233) is required for this installation. ALL models require separate purchase of left and right speaker front enclosures. See your dealership or contact Harley-Davidson Customer Support Center for proper color match.
- **2014 and Later Touring:** Separate purchase of Harley-Davidson Color Matched Vented Fairing Lower Kit (Part No. 57100258xxx) may be required for this installation. FLH or FLTR models require prior or concurrent installation of Harley-Davidson air-cooled fairing lowers.

- **2014 and Later Touring:** Separate purchase of Harley-Davidson Primary Amplifier and Dongle Kit (Part No. 76000997) is required for this installation.
- **2014 and Later Touring:** Separate purchase of Harley-Davidson Primary Amplifier Installation Kit (Part No. 76000974 or 76001045) is required for this installation.
- **2014 and Later Touring:** Separate purchase of Harley-Davidson Secondary Amplifier Installation Kit (Part No. 76000975) may be required for this installation. This depends if there are six or more speakers and how the amplifier channels are assigned.
- **2014 and Later Touring:** Separate purchase of Harley-Davidson Stage 1 or 2 Speaker Kit (Part No. 76000984 or 76000985) may be required for this installation.

⚠ WARNING

Rider and passenger safety depend upon the correct installation of this kit. Use the appropriate service manual procedures. If the procedure is not within your capabilities or you do not have the correct tools, have a **Harley-Davidson dealer perform the installation. Improper installation of this kit could result in death or serious injury. (00333b)**

Installation by a technician at a Harley-Davidson dealership is recommended.

Kit Contents

See Figure 19 and Table 2.

PREPARE

⚠ WARNING

To prevent accidental vehicle start-up, which could cause death or serious injury, remove main fuse before proceeding. **(00251b)**

NOTE

This instruction sheet references service manual information. A service manual for this year/model motorcycle is required for this installation. One is available from a Harley-Davidson dealer.

1. Remove left and right saddlebags.
2. Remove left and right side covers.
3. Remove main fuse.

NOTE

Models with security: Disable security system.

4. Remove seat.

5. Remove fuel tank.
6. Remove wire trough cover.

VENTED FAIRING LOWER

NOTE

See **Installation Requirements** for proper components that are needed for the assembly.

1. Remove lower fairings.
2. See Figure 1. **From the back:** Remove screws (1).

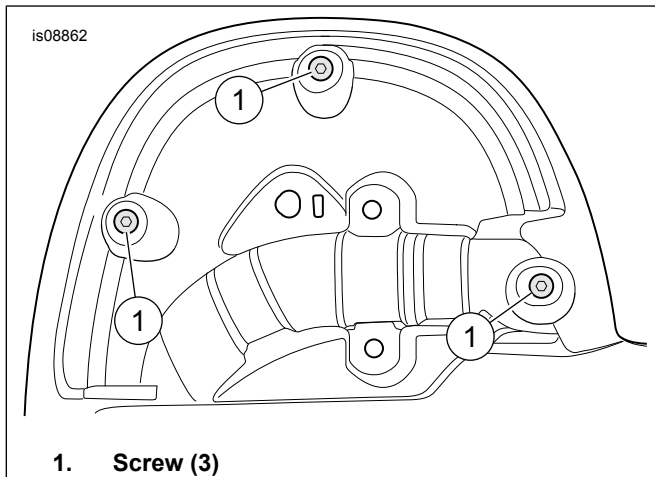


Figure 1. Rear Screws

3. See Figure 2. **From the front:** Remove screws (3), block-off panel (4) and glove box (2).
 - a. Disconnect vent door linkage.

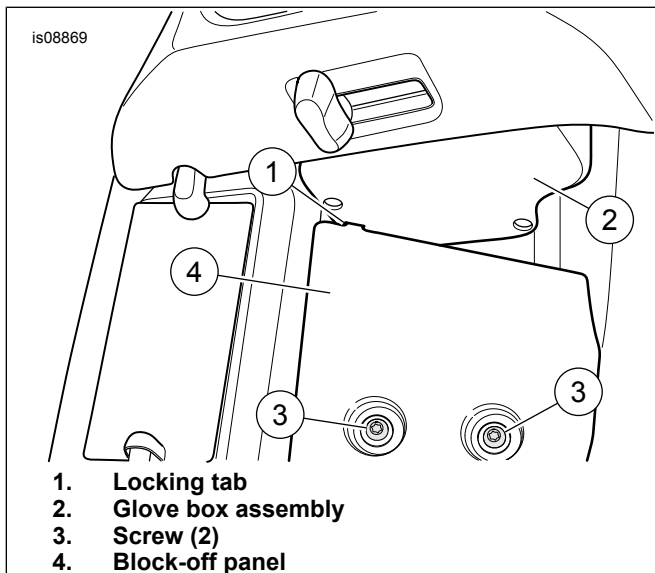


Figure 2. Locking Tab and Block-off Panel

4. See Figure 3. Remove glove box screws (1) and glove box (2).

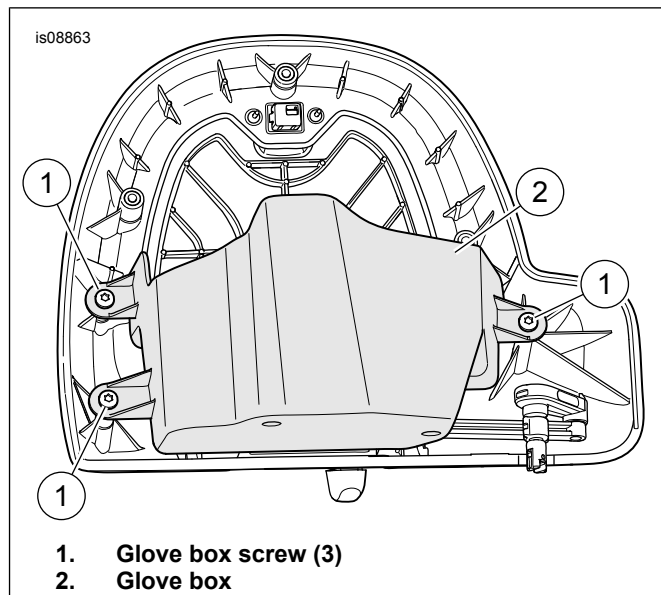


Figure 3. Glove Box Screws

5. See Figure 19. Remove screw (1) and linkage (2).
 - a. Install components on new front enclosure. Tighten. Torque: 1.3–2 N·m (12–18 in-lbs)

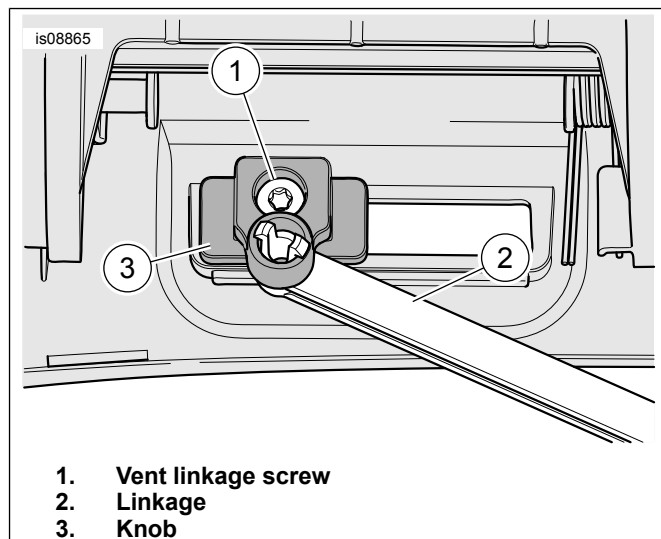
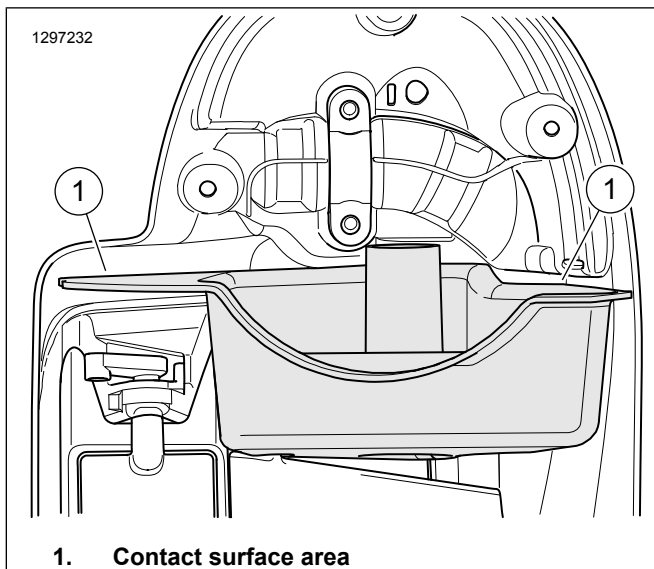


Figure 4. Vent Linkage Screw

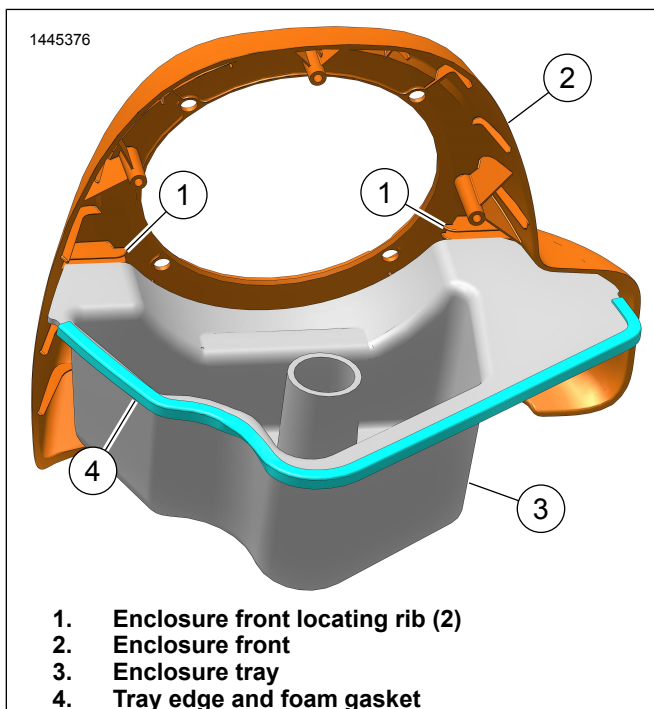
6. See Figure 5. Clean the gasket contact surface area (1) with a mixture of 50-70 percent isopropyl alcohol and 30-50 percent distilled water.



1. Contact surface area

Figure 5. Gasket Mating Surface of Lower Fairing

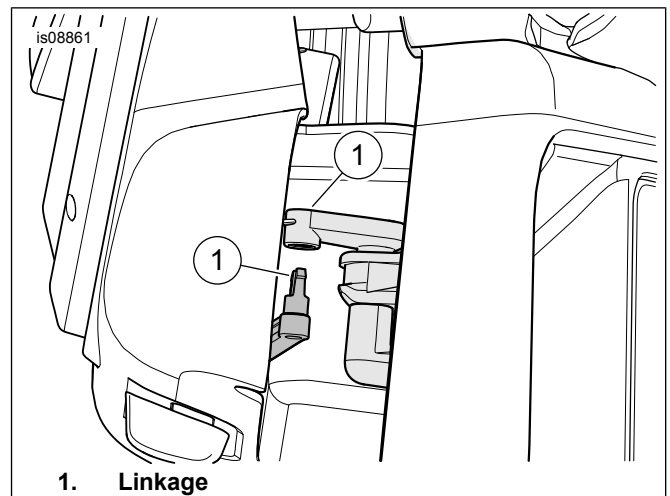
7. See Figure 6. Assemble front enclosure (2) and enclosure tray (3).
 - a. Clean the edge of the tray flange where the foam gasket (4) is to adhere with a mixture of 50-70 percent isopropyl alcohol and 30-50 percent distilled water.
 - b. Start at one end and wrap gasket around the enclosure tray (3).
 - c. Trim and save excess gasket.
 - d. Insert enclosure tray (3) to the front locating ribs (1).



1. Enclosure front locating rib (2)
 2. Enclosure front
 3. Enclosure tray
 4. Tray edge and foam gasket

Figure 6. Enclosure Assembly

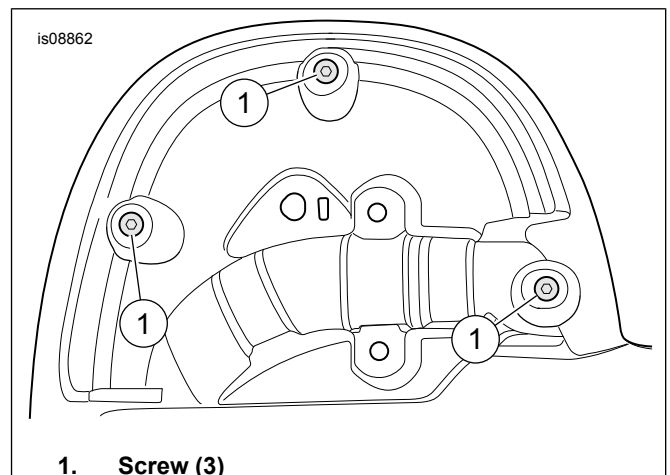
8. See Figure 7. Position the enclosure assembly and connect the linkage (1).



1. Linkage

Figure 7. Connect Linkage

9. See Figure 8. **From the rear:** Install enclosure screws (1). Tighten.
 Torque: 1.3–2 N·m (12–18 in-lbs)



1. Screw (3)

Figure 8. Rear Screws

10. See Figure 9. Fold a piece of trimmed gasket (1) over the locating tab of the block-off panel and install the panel.
 - a. Apply threadlocker to the threads of the screws (4).
 LOCTITE 243 MEDIUM STRENGTH
 THREADLOCKER AND SEALANT (BLUE)
 (99642-97)
 - b. Install screws (4). Tighten.
 Torque: 7.3–8.4 N·m (65–74 in-lbs)

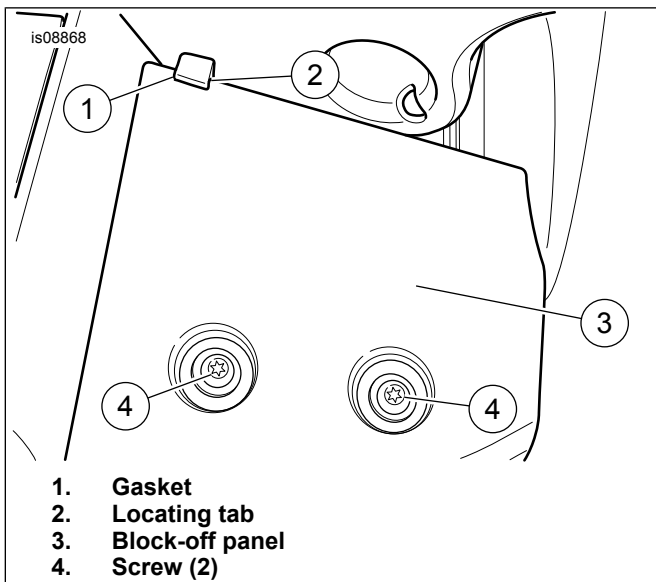


Figure 9. Block-off Panel and Locating Tab Foam

11. See Figure 10. Drill hole in back of lower fairing.
 - a. From outer side edge (A), mark a parallel line (B) at the specified distance (C).
Length/Dimension/Distance: 25 mm (1.0 in)
 - b. From the bottom edge (D) mark a spot on the parallel line at the specified distance (E).
Length/Dimension/Distance: 9.5 mm (0.374 in)

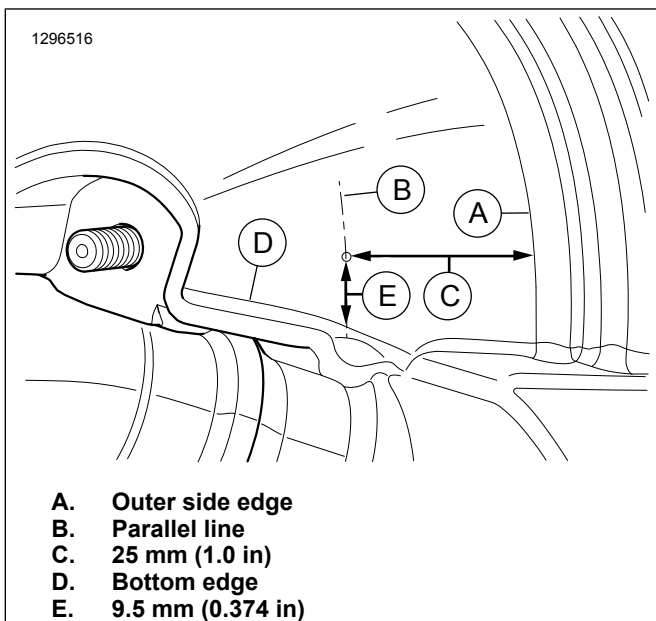


Figure 10. Drill Location

12. Cover drill point with masking tape to prevent cracking or chipping of paint.
13. At the drill location on the glove box inboard side wall, drill a hole.
25 mm (1 in)
 - a. De-burr holes by lightly sanding the surface.

14. See Figure 19. Install rubber grommet (3) into drilled hole.
15. See Figure 11. Install captive nuts (4) from inside of the large opening.

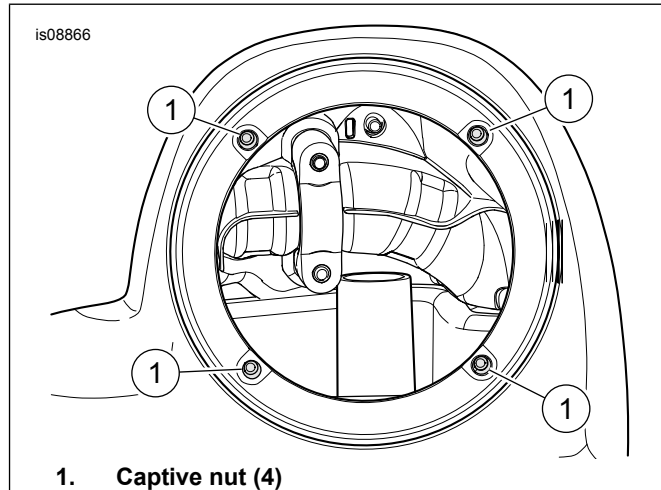


Figure 11. Captive Nuts

16. Repeat procedure for opposite side.
17. Install lower fairings.

INSTALL

1. Route speaker wire harness along the main harness in the wire trough toward the steering head.
 - a. Harness connector should be located in the right side cover area.
 - b. Harness speaker terminals should be located in the speaker enclosure areas.
2. See Figure 12. Route speaker terminals (3) through the grommet in the lower fairing.
 - a. Install speaker in the enclosure. See appropriate kit for installation.
 - b. Wire lengths of the harness are the same length. Identify the right and left by wire color.
 - c. **Right:** Light blue and light blue black.
 - d. **Left:** Light blue/orange and light blue/gray.
 - e. Leave enough slack in the harness to enable speaker removal.
3. See Figure 13. Install lower fairing cap (2).
4. Route and secure harness with cable straps.
5. Repeat procedure for opposite side.

6. See Figure 19. Connect [351B] of speaker wire harness (4) to:
 - a. **Primary Amplifier Installed:** [351A] of the primary amplifier harness.
 - b. **Primary and Secondary Amplifiers Installed:** [352A_1] or [352A_2] of the secondary amplifier of harness.
 - c. Make harness connection in the right side cover area.

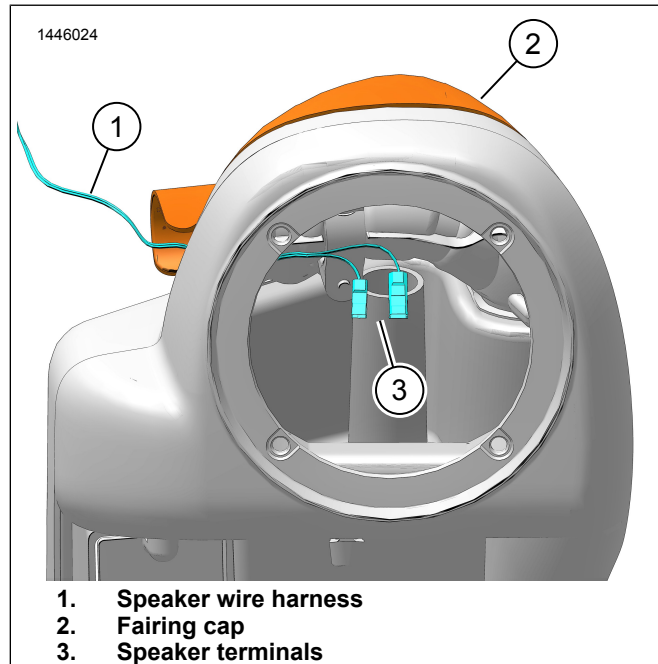


Figure 12. Wire Harness Routing

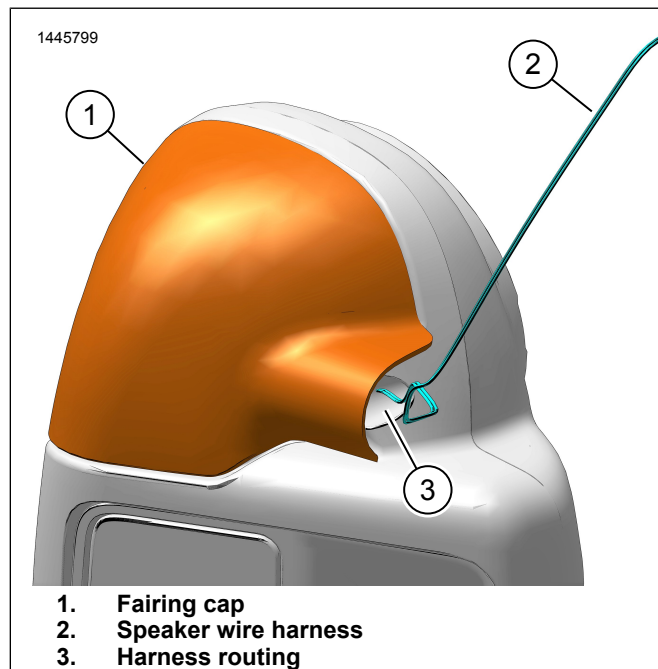


Figure 13. Wire Harness Routing

COMPLETE

NOTE

To prevent possible damage to the sound system, verify that the ignition is OFF before installing the main fuse.

1. Install main fuse.
2. Turn ignition ON, but do not start the vehicle.
3. Make sure that all speakers are working and front/rear fader function is operating correctly. If not, check speaker wiring.
4. Install wire trough cover.
5. Install fuel tank.
6. Install seat.
7. Install left and right side covers.
8. Install left and right saddlebags.

APP SETUP

1. See Figure 14. Accessing your audio system.
 - a. Pair device (1) to system.
 - b. Access app menus (2) to setup vehicle sound system.

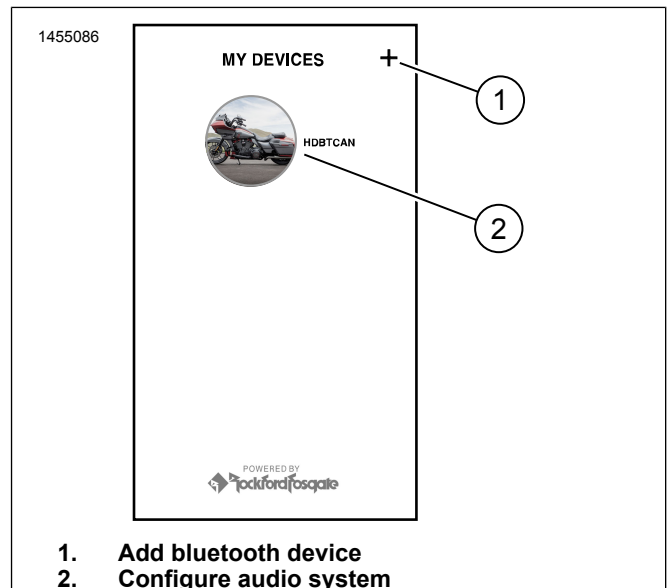
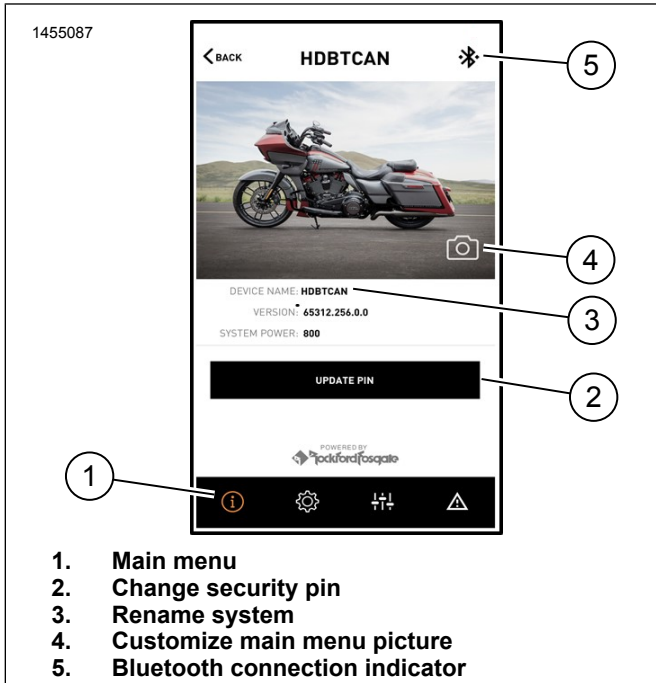


Figure 14. System Access

2. See Figure 15. Main menu screen.
 - a. Main menu icon (1).
 - b. Reset or change security personal identification number (PIN) (2).
 - c. Edit and rename your system (3).

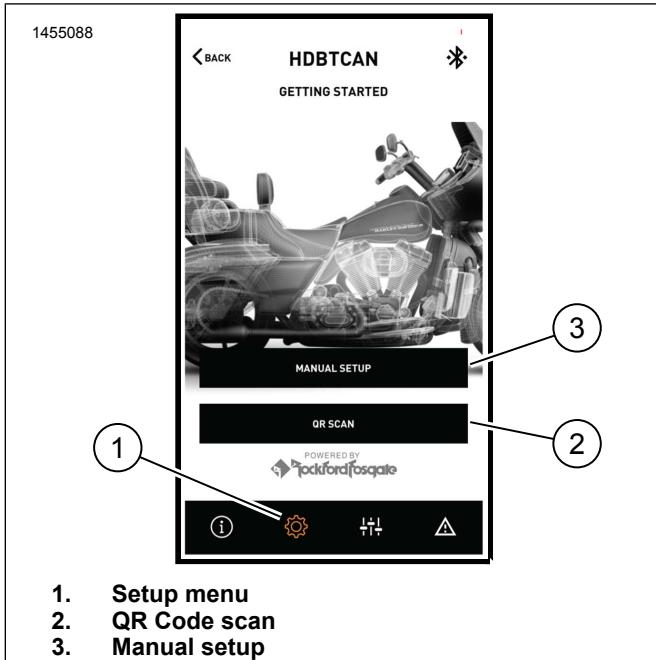
- d. Customize main menu with your bike picture (4).
- e. Bluetooth connection indicator. Slash through symbol indicates: Not Connected (5).



1. Main menu
2. Change security pin
3. Rename system
4. Customize main menu picture
5. Bluetooth connection indicator

Figure 15. Main Menu

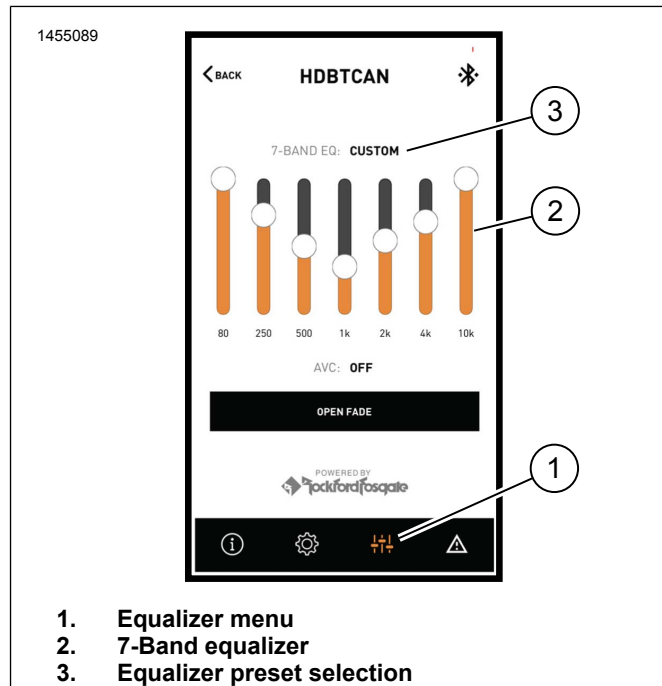
- 3. See Figure 16. Setup menu screen.
 - a. Setup menu icon (1).
 - b. Use to scan QR code (2) on iSheet.
 - c. Manual setup for Stage 1 or 2 speakers, speaker location and white noise to assign speaker locations.



1. Setup menu
2. QR Code scan
3. Manual setup

Figure 16. Setup Menu

- 4. See Figure 17. Equalizer setup screen.
 - a. Equalizer setup icon (1)
 - b. Tune 7-Band equalizer (2) frequencies.
 - c. Custom or preset equalizer selections (3).



1. Equalizer menu
2. 7-Band equalizer
3. Equalizer preset selection

Figure 17. Equalizer Menu

- 5. See Figure 18. Diagnostic menu screen.
 - a. Diagnostic menu icon (1) displays sound system status.
 - b. Open the speaker testing screen (2).
 - c. Refreshes speaker and amplifier status (3) after component repair.
 - d. Select speaker for white noise (4) test and functionality.
 - e. Return to diagnostic menu screen (5).

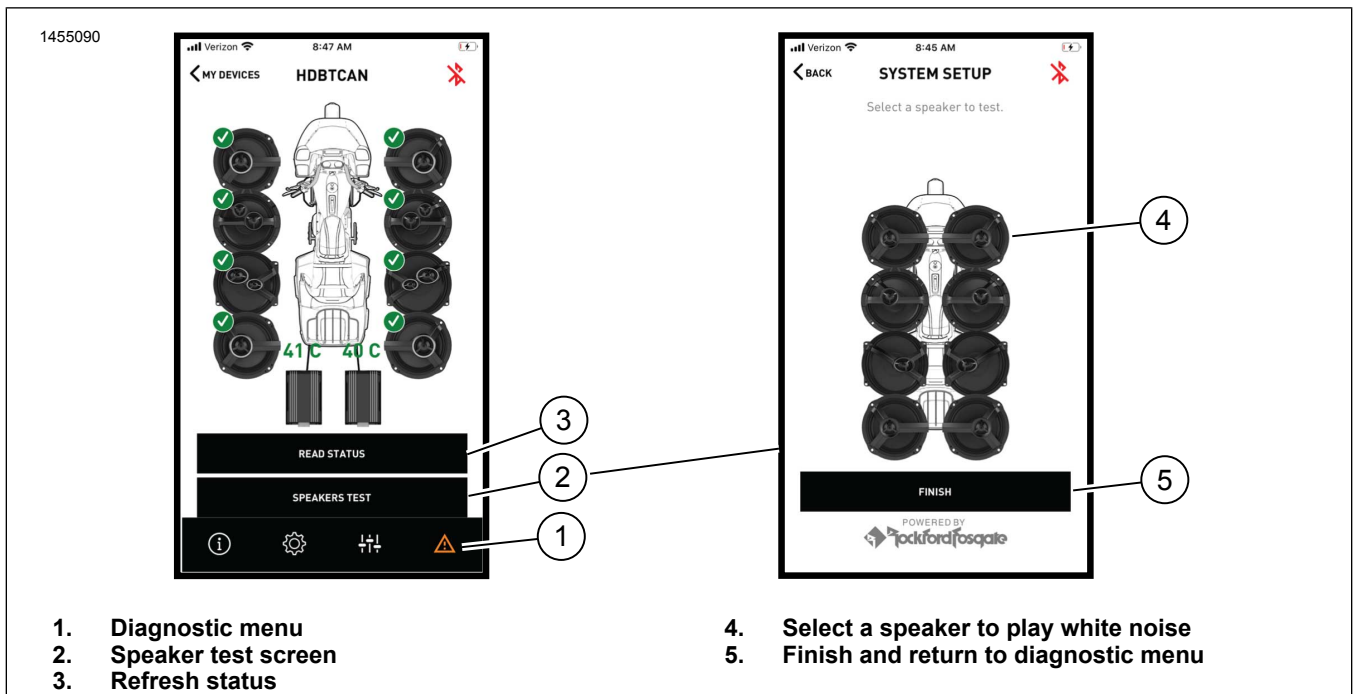


Figure 18. Diagnostic Menu

SERVICE PARTS

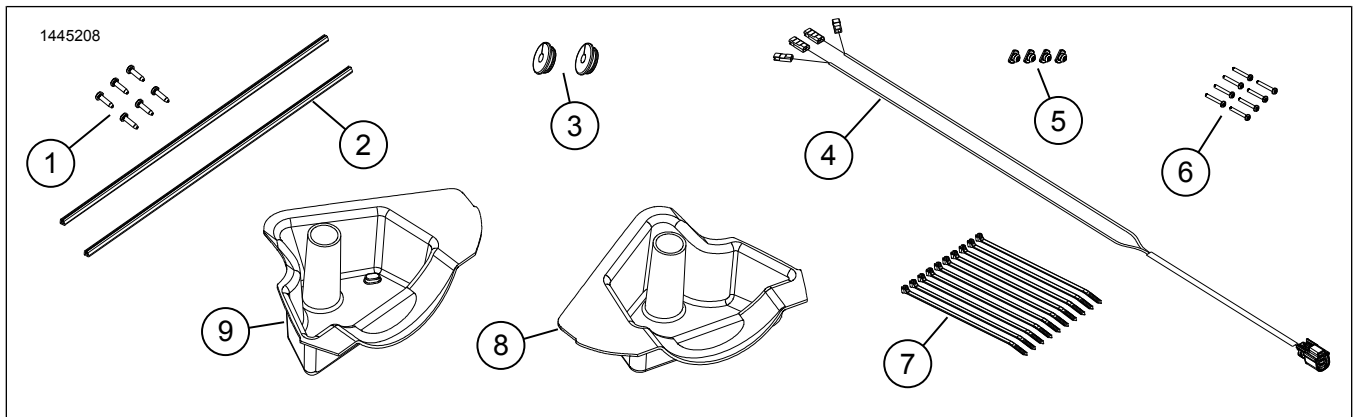


Figure 19. Service Parts, Fairing Lower Speakers

Table 2. Service Parts

Item	Description (Quantity)	Part Number
1	Screw, short (6)	2995
2	Gasket (2)	25700895
3	Grommet	12100071
4	Speaker wire harness	Not sold separately
5	Captive nut (4)	10100064
6	Screw, long (8)	10200294
7	Cable strap (10)	10006
8	Speaker enclosure, right	Not sold separately
9	Speaker enclosure, left	Not sold separately