



# INSTRUCTIONS

94100156

2021-02-04



## TWIN COOLED FAIRING LOWER SPEAKER HARNESS INSTALL KIT (PN 76000991)

### GENERAL

#### NOTE

The newly installed audio system and speakers will not play audio unless it is configured using the Harley-Davidson Change audio app or by an authorized Harley-Davidson dealership.

Table 1.

Harley-Davidson Audio Powered by Rockford Fosgate®	
Kit	QR Code
76000991	N/A

#### NOTE

The various generations of speakers, amplifiers and wiring for Harley-Davidson vehicles were not designed or tested to work together. Please consult your dealership to ensure optimal performance and compatibility.

### Models

For model fitment information, see the P&A retail catalog or the Parts and Accessories section of [www.harley-davidson.com](http://www.harley-davidson.com) (English only).

Ensure you are using the most current version of the instruction sheet which is available at: [h-d.com/isheets](http://h-d.com/isheets)

Contact Harley-Davidson Customer Support Center at 1-800-258-2464 (U.S. only) or 1-414-343-4056.

### Installation Requirements

Download Harley-Davidson audio app.

Use this kit in conjunction with other **Harley-Davidson Audio powered by Rockford Fosgate®** kits.

This harness is for use **ONLY** on **2014 and later** Harley-Davidson audio systems.

These items are available at your Harley-Davidson dealership.

- **2014 and Later FLTRUSE and Touring:** Separate purchase of Harley-Davidson Primary Amplifier and Dongle Kit (Part No. 76000997) is required for this installation.
- **2014 and Later FLTRUSE and Touring:** Separate purchase of Harley-Davidson Primary Amplifier Installation Kit (Part No. 76000974 or 76001045) is required for this installation.
- **2014 and Later FLTRUSE and Touring:** Separate purchase of Harley-Davidson Secondary Amplifier Kit (Part No. 76000975) may be required for this installation. This depends if there are six speakers or more and how the amplifier channels are assigned.

- **2014 and Later LHTKSE, FLTRUSE and Touring:** Separate purchase of Harley-Davidson Stage 1 or 2 Speaker Kit (Part No. 76000988 or 76000989) may be required for this installation.

#### ▲ WARNING

Rider and passenger safety depend upon the correct installation of this kit. Use the appropriate service manual procedures. If the procedure is not within your capabilities or you do not have the correct tools, have a Harley-Davidson dealer perform the installation. Improper installation of this kit could result in death or serious injury. (00333b)

Installation by a technician at a Harley-Davidson dealership is recommended.

### Kit Contents

See Figure 7 and Table 2.

### PREPARE

#### ▲ WARNING

To prevent accidental vehicle start-up, which could cause death or serious injury, remove main fuse before proceeding. (00251b)

#### NOTE

This instruction sheet references service manual information. A service manual for this year/model motorcycle is required for this installation. One is available from a Harley-Davidson dealer.

1. Remove left and right saddlebags (excludes Tri-Glide).
2. Remove left and right side covers.
3. Remove main fuse.

#### NOTE

**Models with security:** Disable security system.

4. Remove seat.
5. Remove fuel tank.
6. Remove wire trough cover.

## INSTALL

1. Route speaker wire harness along the main harness in the wire trough toward the steering head.
  - a. Speaker harness connectors from the primary amplifier [351] and if equipped, secondary amplifier [352\_21] and [352\_2] should be located in the right side cover area.
  - b. Harness speaker terminals should be located in the speaker enclosure areas.
2. See Figure 1. Route speaker terminals (2) through the access holes (1, 4) in the lower fairing.
  - a. Install speaker in the enclosure. See appropriate kit for installation.
  - b. Wire lengths of the harness are the same length. Identify the right and left by wire color.
  - c. **Right:** Light blue and light blue black.
  - d. **Left:** Light blue/orange and light blue/gray.
  - e. Leave enough slack in the harness to enable speaker removal.
3. Route and secure harness with cable straps.
4. Repeat procedure for opposite side.
5. Connect speaker harness [351B] to:
  - a. **Primary Amplifier Installed:** [351A] of the primary amplifier harness.
  - b. **Primary and Secondary Amplifier Installed:** [352A\_1] or [352A\_2] of the secondary amplifier of harness.
  - c. Make harness connection in the right side cover area.

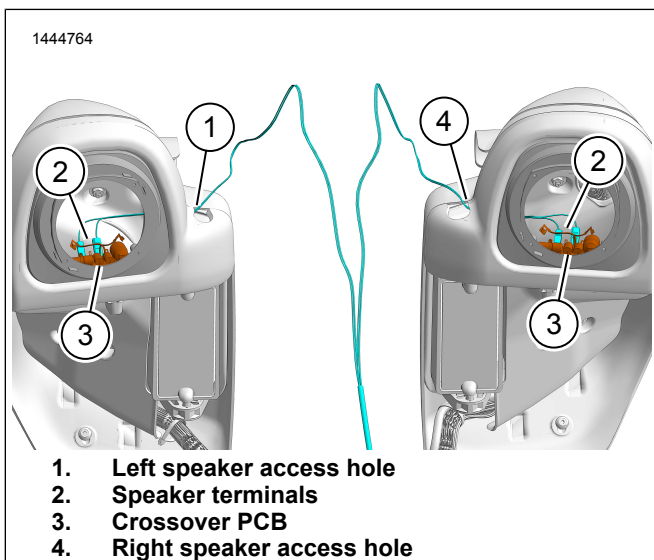


Figure 1. Speaker Wire Harness

## COMPLETE

### NOTE

To prevent possible damage to the sound system, verify that the ignition is OFF before installing the main fuse.

1. Install main fuse.
2. Turn ignition ON, but do not start the vehicle.
3. Make sure that all speakers are working and front/rear fader function is operating correctly. If not, check speaker wiring.
4. Install wire trough cover.
5. Install fuel tank.
6. Install seat.
7. Install left and right side covers.
8. Install left and right saddlebags (excludes Tri-Glide).

## APP SETUP

1. See Figure 2. Accessing your audio system.
  - a. Pair device (1) to system.
  - b. Access app menus (2) to setup vehicle sound system.

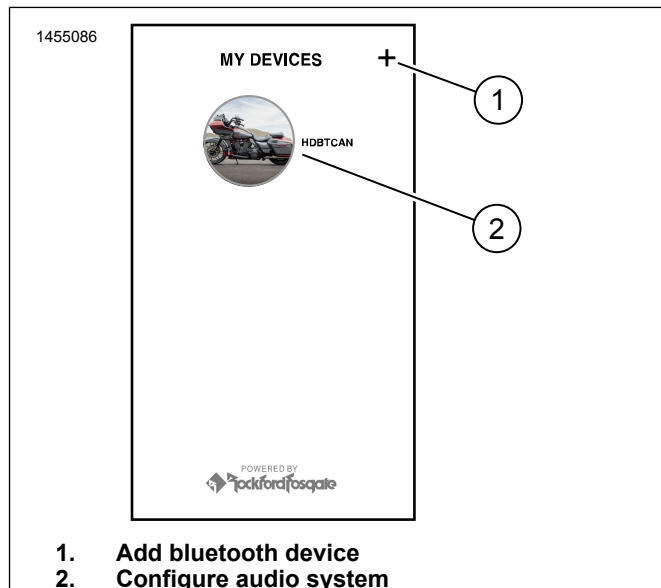


Figure 2. System Access

2. See Figure 3. Main menu screen.
  - a. Main menu icon (1).
  - b. Reset or change security personal identification number (PIN) (2).
  - c. Edit and rename your system (3).

- d. Customize main menu with your bike picture (4).
- e. Bluetooth connection indicator. Slash through symbol indicates: Not Connected (5).

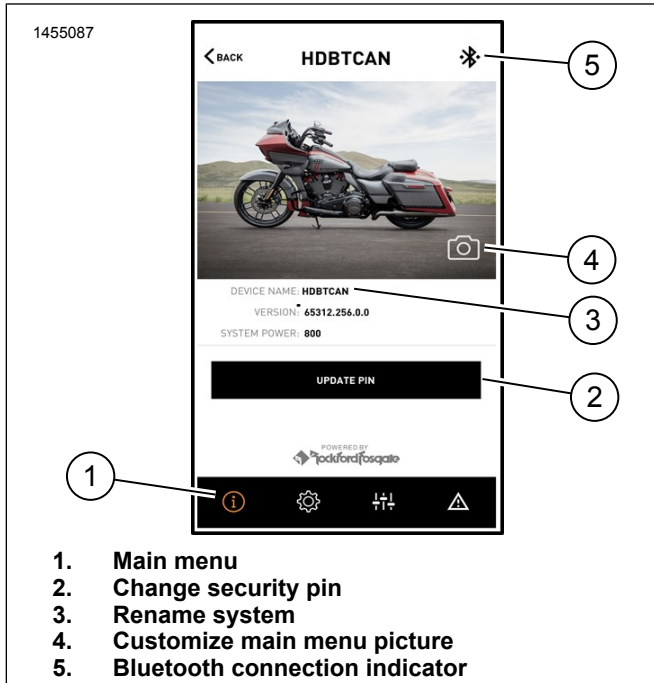


Figure 3. Main Menu

- 3. See Figure 4. Setup menu screen.
  - a. Setup menu icon (1).
  - b. Use to scan QR code (2) on iSheet.
  - c. Manual setup for Stage 1 or 2 speakers, speaker location and white noise to assign speaker locations.

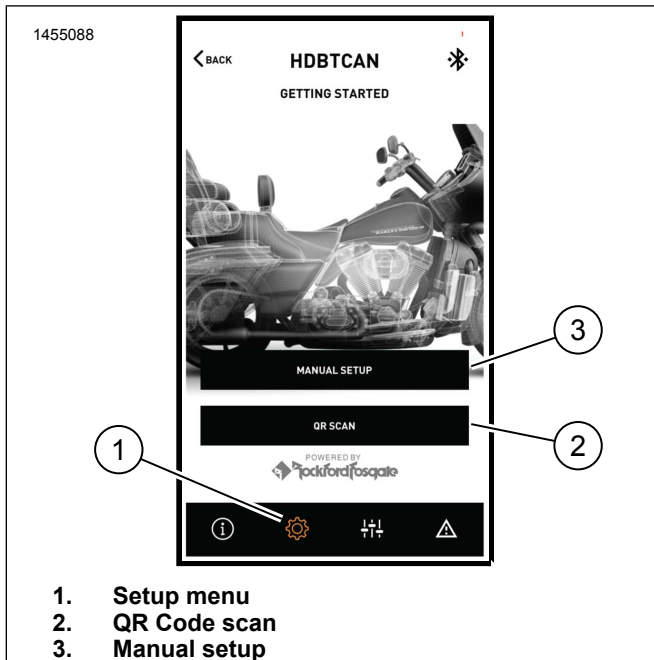


Figure 4. Setup Menu

- 4. See Figure 5. Equalizer setup screen.
  - a. Equalizer setup icon (1)
  - b. Tune 7-Band equalizer (2) frequencies.
  - c. Custom or preset equalizer selections (3).

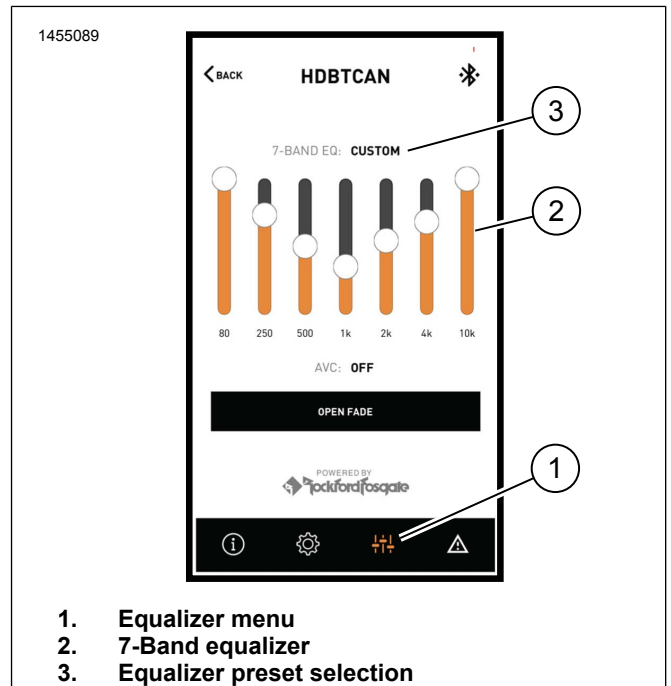


Figure 5. Equalizer Menu

- 5. See Figure 6. Diagnostic menu screen.
  - a. Diagnostic menu icon (1) displays sound system status.
  - b. Open the speaker testing screen (2).
  - c. Refreshes speaker and amplifier status (3) after component repair.
  - d. Select speaker for white noise (4) test and functionality.
  - e. Return to diagnostic menu screen (5).

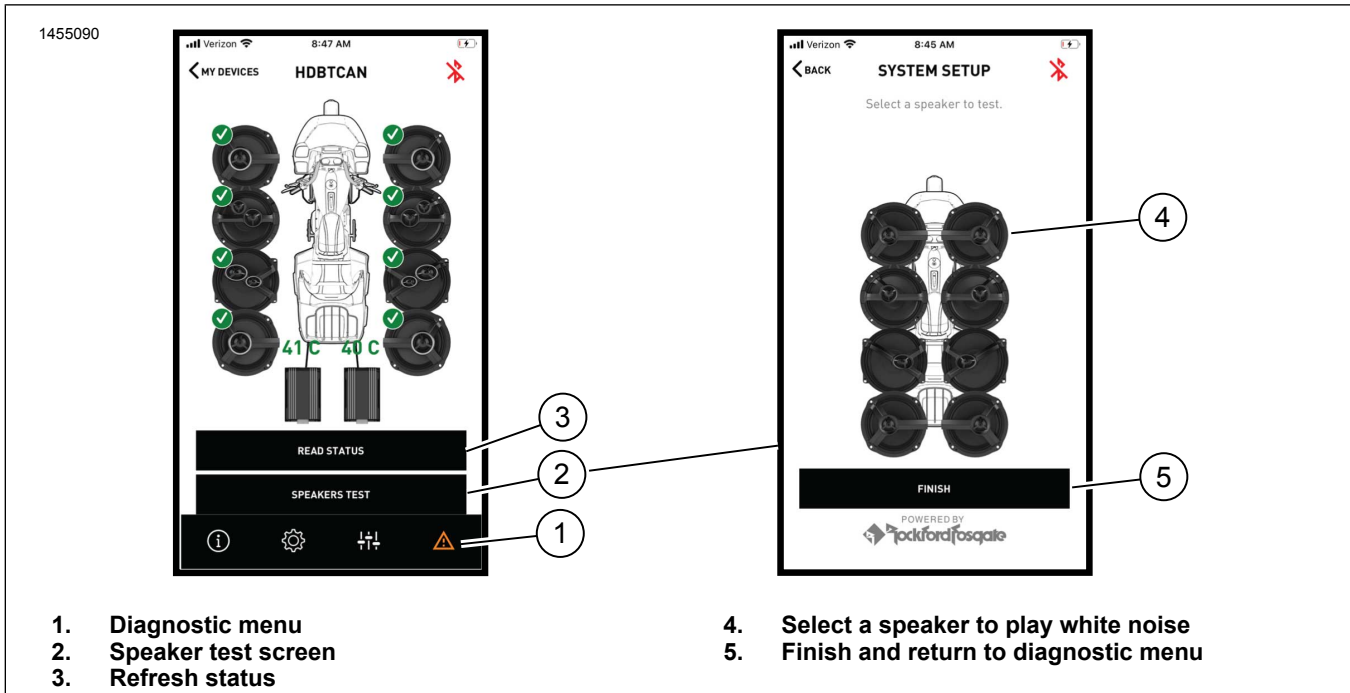


Figure 6. Diagnostic Menu

## SERVICE PARTS

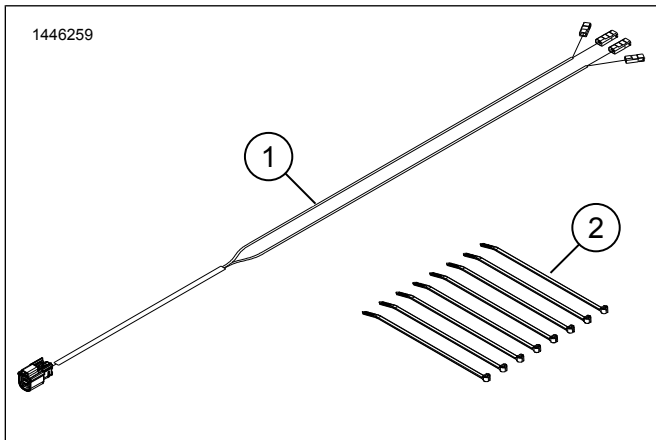


Figure 7. Service Parts, Fairing Lower Speakers

Table 2. Service Parts

Item	Description (Quantity)	Part Number
1	Speaker wire harness	Not sold separately
2	Cable strap (8)	10006