



INSTRUCTIONS

J05525

2012-01-10



VENTED QUICK RELEASE DETACHABLE WINDSHIELD KIT

GENERAL

Kit Number

57400026

Models

For model fitment information, see the PA Retail Catalog or the Parts and Accessories section of www.harley-davidson.com (English only).

INSTALLATION

⚠ WARNING

Rider and passenger safety depend upon the correct installation of this kit. If the procedure is not within your capabilities or you do not have the correct tools, have a Harley-Davidson dealer perform the installation. Improper installation of this kit could result in death or serious injury. (00308b)

NOTE

Cover the front fender and the front of the fuel tank with clean shop towels to prevent scratching. Damage to the finish could result.

Assemble the Clamps to the Windshield

1. See Figure 1. Remove the windshield sub-assembly from the packaging and place face down on a clean, soft surface with the mount brackets facing upward.

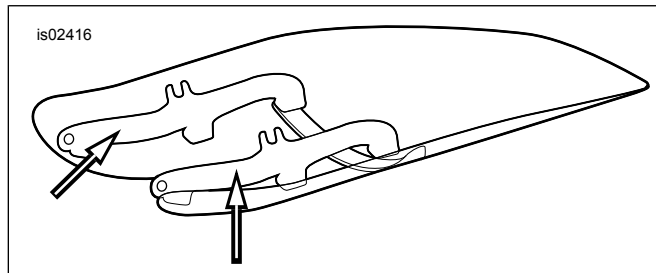


Figure 1. Windshield Mounting Brackets

2. See Figure 1, Figure 2, and Figure 3. Remove both the clamp and hardware kits from the packaging, and separate similar parts in preparation for assembly.
3. See Figure 2. Pre-assemble the clamp assemblies (5) and hardware stacks.

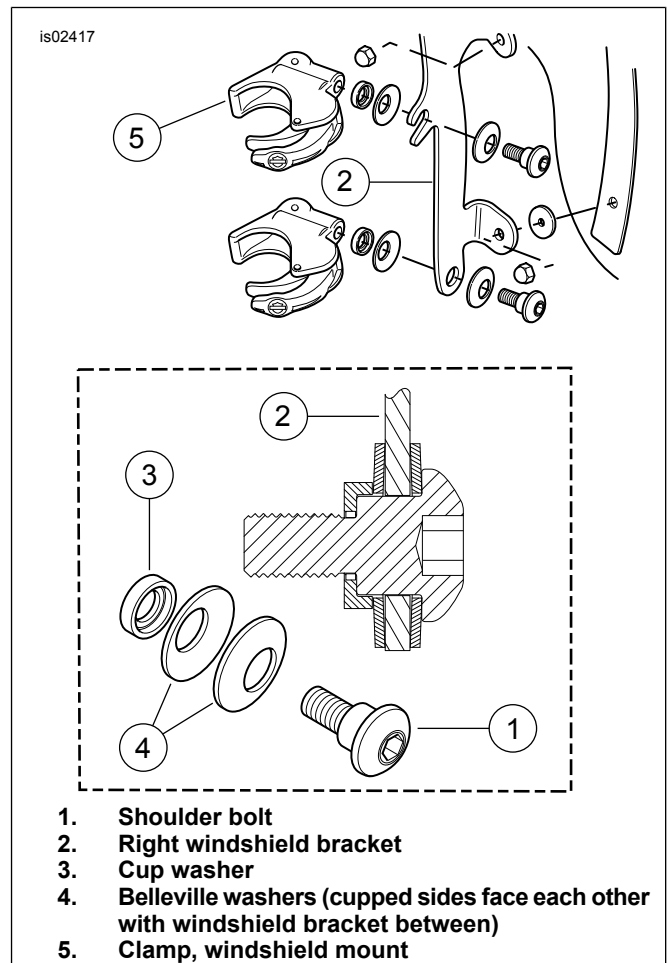
⚠ WARNING

The cupped side of the Belleville (cone) washers must face each other and sandwich the windshield mount brackets at each mount point. Failure to orient washers correctly can reduce windshield's ability to break away in a collision, which could result in death or serious injury. (00422b)

4. One clamp at a time, with the clamp (5) facing upward and inboard of the windshield bracket (2), tighten the shoulder bolts (1) enough to hold the clamp orientation to the windshield during mounting of the windshield to the motorcycle. The bolts will be fully tightened later.

NOTE

Keep front wheel straight to prevent brackets from scratching fuel tank.



1. Shoulder bolt
2. Right windshield bracket
3. Cup washer
4. Belleville washers (cupped sides face each other with windshield bracket between)
5. Clamp, windshield mount

Figure 2. Windshield Mounting Clamp

Install the Windshield

1. Make sure all four clamps are in the "open" position, then bring the windshield (with the clamp side away from you) to the front of the motorcycle.

NOTE

The Lexan[®] windshield is fairly flexible and can be bent to spread the clamps away from the headlamp to ease installation to the motorcycle. Take care not to scratch the headlamp housing with the clamps while positioning the windshield to the fork sliders.

2. Straddle the front fender, center the windshield around the headlamp and seat the clamps onto the fork sliders.
3. Starting at the bottom (either side) and with the shoulder bolts just a little more than finger tight, close each clamp, taking note that the clamps self-align to the fork sliders and to each other.

NOTE

Do not tighten the shoulder bolts beyond the recommended torque. Over-torquing may cause the clamp to twist on the fork slider, yielding the clamp jaw. A yielded clamp may not carry a preload on the fork slider and cause the windshield to come loose during use.

NOTICE

Do not exceed recommended torque when installing mounting screws. Damage to windshield can result. (00385a)

4. With the windshield clamps now clamped to the fork sliders, make sure that the shoulder portion of the shoulder bolts are fully seated in each windshield bracket location. Tighten each shoulder bolt to 6.7 N·m (60 in-lbs).

▲ WARNING

Improper installation of accessories or loading of cargo can affect motorcycle stability and handling, which could result in death or serious injury. (00455b)

▲ WARNING

Failure to provide adequate clearance between stationary and moving parts can cause loss of control, which could result in death or serious injury. (00378a)

NOTE

Inspect windshield upon completion of installation. Be sure windshield mounting does not restrict full left or full right movement of front fork assembly. If restriction does occur, adjust windshield as needed until proper clearance is obtained. Have experienced Harley-Davidson service personnel correct any problems before riding with this accessory installed.

NOTE

Check mounting hardware periodically. Never ride with loose mounts. A loose mounting causes extra stress on all other mounts, as well as the windshield itself, and could result in premature failure of components.

Removing the Windshield

To remove the windshield, open the four clamps, in any sequence, and reverse the preceding installation procedures. Take care to not scratch the headlamp housing or fuel tank as noted during installation.

When storing the windshield, place in a location where the windshield clamps will receive the greatest protection. Keep from locations where the windshield may be impacted or dropped. Do not stack anything on top of the assembly.

Prior to re-installation after any storage period, inspect the clamps and hardware for fastener preload and cleanliness. Each clamp should have a pair of rubber gaskets in the clamp saddle that mates to the fork slider, and should cycle open and closed freely.

CARE AND CLEANING

NOTE

Sunlight reflections off of the inside curvature of a windshield can, at certain times of the day, cause extreme heat build-up on motorcycle instruments. Exercise care in parking. Park facing the sun, place an opaque object over the instruments, or adjust the windshield to avoid reflections.

NOTICE

Polycarbonate windshields/wind deflectors require proper attention and care to maintain. Failure to maintain polycarbonate properly can result in damage to the windshield/wind deflector. (00483e)

NOTICE

Use only Harley-Davidson recommended products on Harley-Davidson windshields. Do not use harsh chemicals or rain sheeting products, which can cause windshield surface damage, such as dulling or hazing. (00231c)

Do not clean Lexan[®] polycarbonate in hot sun or high temperature. Powdered, abrasive or alkaline cleanser will damage the windshield. Never scrape the windshield with a razor blade or other sharp instruments because permanent damage will result.

NOTE

Covering the windshield with a clean, wet cloth for about 15 minutes before washing will make dried bug removal easier.

Harley-Davidson Windshield Water Repellent Treatment Part Number 99841-01 is approved for use on Harley-Davidson Lexan[®] windshields.

SERVICE PARTS

is07108a

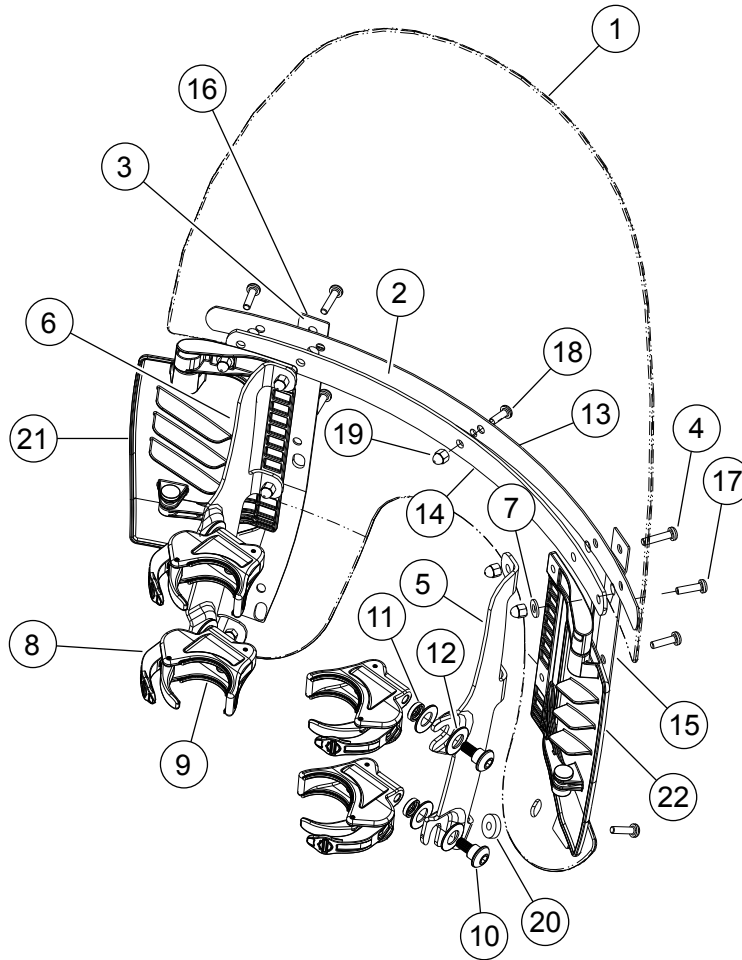


Figure 3. Service Parts: Vented Detachable Windshield

Table 1. Service Parts: Detachable Windshield Kits

Item	Description (Quantity)	Part Number
--	Windshield service kit (includes items 1 through 3)	57400116
1	Windshield	Not Sold Separately
2	Tape, horizontal (2)	58052-78
3	Tape, vertical (2)	58417-77
4	Screw, button head #12-24 x 1 inch, TORX® with lock patch (2)	Not Sold Separately
5	Bracket, windshield mount, right	58782-06
6	Bracket, windshield mount, left	58784-06
7	Washer (2)	6119
8	Clamp assembly, tool-less release (4) (includes two of item 9)	57192-05A
9	Gasket (8 total, 2 per clamp)	58791-04
--	Hardware kit, windshield mount (4) (includes items 10 through 12)	Not Sold Separately
10	Shoulder screw, button head	Not Sold Separately
11	Spacer, cup washer	Not Sold Separately
12	Belleville washer (2)	Not Sold Separately
13	Brace, horizontal, outer	57400046
14	Brace, horizontal, inner	58050-78A
15	Brace, vertical, right-hand	58406-75A
16	Brace, vertical, left-hand	58408-75A
17	Screw, button head, TORX®, with lock patch, #12-24 x 13/16 in. (6)	2452
18	Screw, button head, TORX®, with lock patch, #12-24 x 5/8 in. (1)	2921
19	Acorn nut, #12-24 (chrome) (9)	7651A
20	Spacer (2)	Not Sold Separately

Table 1. Service Parts: Detachable Windshield Kits

Item	Description (Quantity)	Part Number
21	Vent assembly, left side	57400030
22	Vent assembly, right side	57400029