



# INSTRUCTIONS

J06010

2015-02-28



## ROAD GLIDE FAIRING POUCH

### GENERAL

#### Kit Number

93300097

#### Models

For model fitment information, see the P&A Retail Catalog or [harley-davidson.com](http://harley-davidson.com) (English only).

#### Installation Requirements

##### ⚠ WARNING

Rider and passenger safety depend upon the correct installation of this kit. If the procedure is not within your capabilities or you do not have the correct tools, have a Harley-Davidson dealer perform the installation. Improper installation of this kit could result in death or serious injury. (00308b)

#### Kit Contents

This kit contains a multi-pocket, fairing pouch.

There are no service parts available with this kit.

### INSTALLATION

1. See Figure 1. Remove four screws (1) securing the windshield at the top of the top duct and fairing, and remove the windshield (2).
2. Remove the rubber windshield gasket (3) from the outer fairing, being careful not to damage the mounting tabs.
3. Place the fairing pouch (4) onto the top duct (5), ensuring that the square holes in the fairing pouch line up with the square mounting holes in the outer fairing.
4. Install the rubber gasket over the top of the fairing pouch into the square holes.

#### NOTE

If installing only this kit, use the black OE windshield mounting screws.

If also installing a Windshield Molding Kit, use the chrome screws from that kit.

5. Place the windshield over the top of the rubber gasket. Install the four screws previously removed. Tighten to 0.9–1.4 N·m (8–12 in-lbs).
6. Make sure that both the windshield and fairing pouch are fully seated.

### OPERATION

1. Verify all magnets are in place.
2. Verify pocket lids close properly, when the pockets are empty.
3. When in use, verify pocket contents are fully enclosed in each pocket. Verify pocket lids close properly.

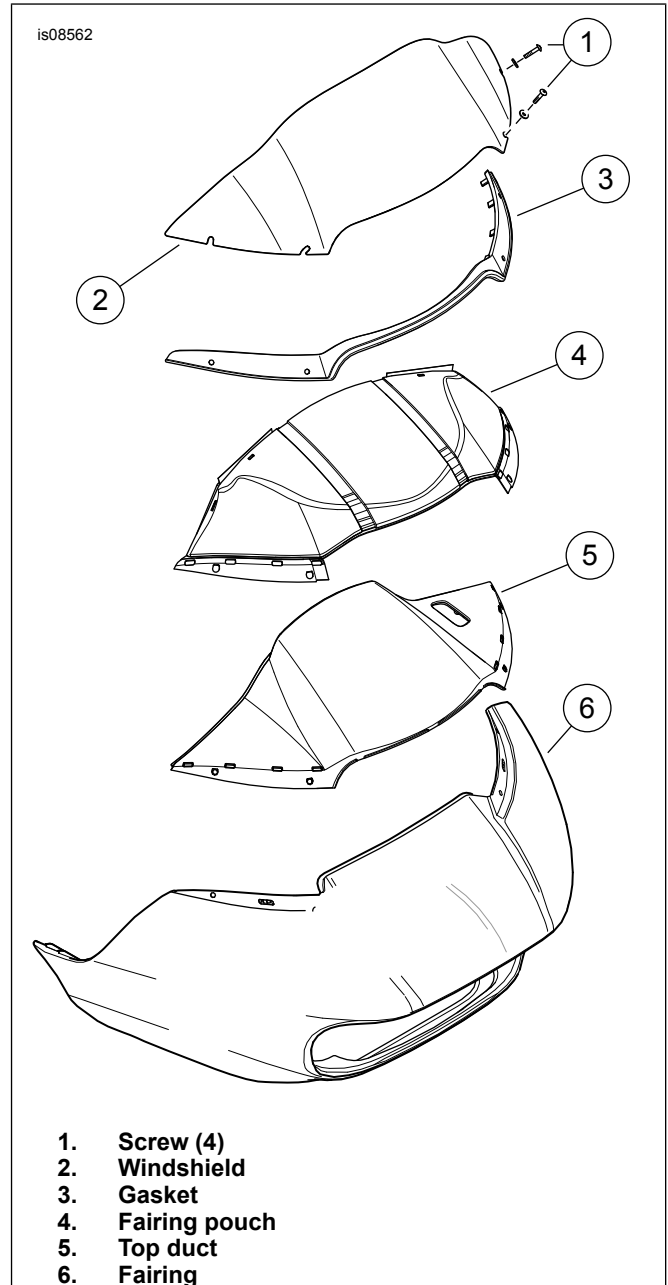


Figure 1. Install Fairing Pouch