



INSTRUCTIONS

J05627

2013-03-15



PREMIUM SADDLEBAG RAILS

GENERAL

Kit Number

90200876

Models

For model fitment information, see the P&A retail catalog or the Parts and Accessories section of www.harley-davidson.com (English only).

NOTICE

The trim rail is not intended for cargo. To prevent damage, do not strap cargo to the trim rail. (00603d)

Installation Requirements

Silicone sealant, a drill and drill bits, masking tape, a grease pencil or felt tip pen, and a soft pencil are needed to install this kit.

Use an assistant to help position the saddlebag lid rails.

⚠ WARNING

Rider and passenger safety depend upon the correct installation of this kit. If the procedure is not within your capabilities or you do not have the correct tools, have a Harley-Davidson dealer perform the installation. Improper installation of this kit could result in death or serious injury. (00308b)

Kit Contents

See Figure 1 and Table 1.

INSTALLATION

1. See the owner's manual and remove a saddlebag from one side of the motorcycle.
2. See Figure 1. Locate the three drill points (B) on the inside of the saddlebag lid.

3. Place a piece of 50 mm (2 in) wide masking tape (A) on top of the lid over the drill points. The tape will help prevent paint chipping.
4. Drill a pilot hole at each drill point with a 1/16 in (1.6 mm) drill bit.
5. Enlarge holes with a 7/32 in (5.5 mm) drill bit.
6. Remove the tape. Lightly sand to remove burrs and sharp edges.

NOTE

- Clean the inside and outside lid surfaces of debris, markings and tape residue with a 50-50 mixture of isopropyl alcohol and distilled water. Allow to dry thoroughly.
 - Apply a small amount of silicone sealant between the underside of the saddlebag lid and the nylon washers, and around the screw threads to prevent water leakage.
 - Brace or tie the saddlebag lid securely in the open position during rail installation to prevent hand or finger injury, or scratching of the saddlebag lid finish.
7. Cut three mounting pads (8) and three nylon washers (7) from the mounting pad and washer set. Place a mounting pad on each foot of the trim rail.
 8. Install trim rail with mounting pads (8) to saddlebag cover with screws (3), lockwashers (4), washers (5), and nylon mounting washers (7). Do not tighten screws.

NOTE

Nylon mounting pads and washers should compress only slightly when screws are properly secure.

9. Tighten screws (3) to 3.1–3.5 N·m (27–31 in-lbs).
10. Repeat procedure for opposite side saddlebag trim rail.

SERVICE PARTS

is07506

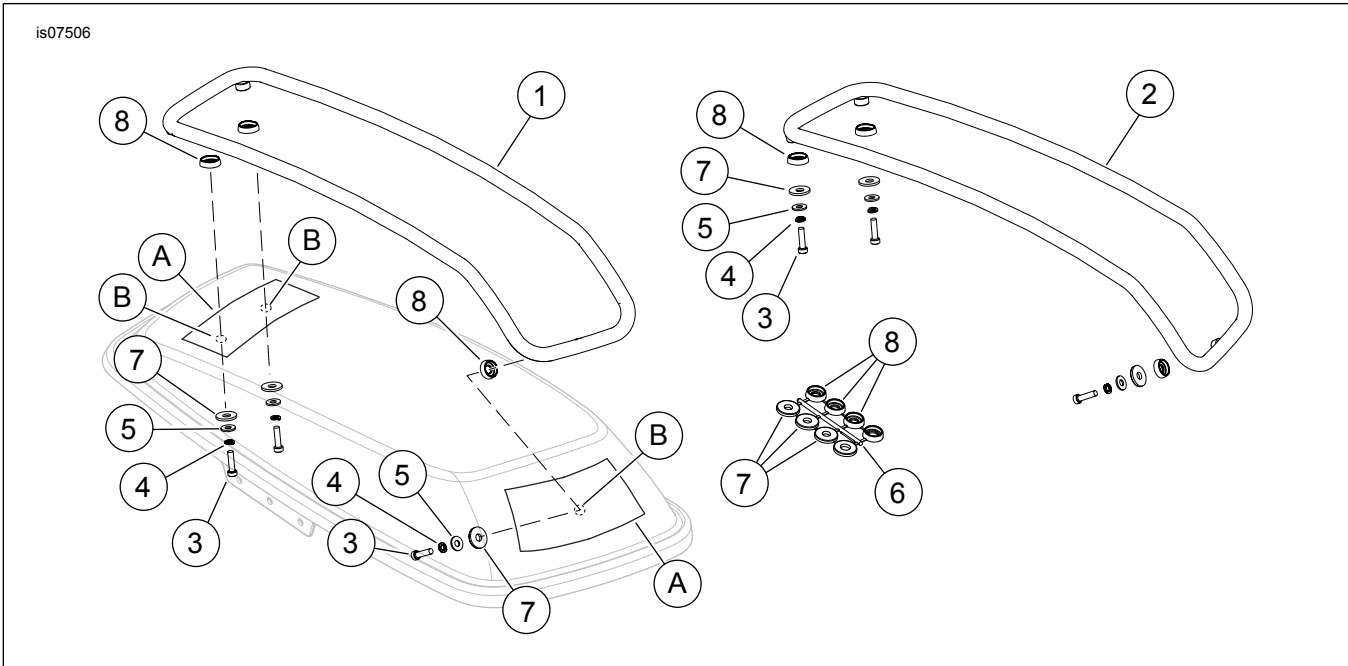


Figure 1. Service Parts: Premium Saddlebag Rails

Table 1. Service Parts Table

Item	Description (Quantity)	Part Number
1	Trim rail, right	90200879
2	Trim rail, left	90200880
3	Screw, fillister head (6)	1205
4	Lockwasher (6)	7069
5	Washer, plain (6)	6716
6	Mounting pad and washer set (2)	90875-08
7	• Nylon washer (6)	Not Sold Separately
8	• Mounting pad (6)	Not Sold Separately
Items mentioned in text, but not included in kit:		
A	50 mm (2 in) wide masking tape	
B	Drill point indicators on the inside of the saddlebag lid (3)	