



# INSTRUCTIONS

J03778

2015-10-15



## SOFTAIL CUSTOM SOLO SEAT KITS

### GENERAL

#### Kit Number

51393-06A, 52246-08, 52269-08

#### Models

For model fitment information see the P&A Retail Catalog or the Parts and Accessories section of [www.harley-davidson.com](http://www.harley-davidson.com) (English only).

#### Kit Contents

See Figure 2 and Table 1.

#### ⚠ WARNING

Rider and passenger safety depend upon the correct installation of this kit. If the procedure is not within your capabilities or you do not have the correct tools, have a Harley-Davidson dealer perform the installation. Improper installation of this kit could result in death or serious injury. (00308b)

### REMOVE EXISTING SEAT

#### NOTE

When a solo seat is installed without a passenger seat, the passenger footpegs or footboards and the passenger grab strap must be removed.

When removing existing seat, do not scratch painted surfaces (fender, tank, and so on) with metal tab on seat.

1. Remove seat according to the Owner's Manual instructions.
2. See Figure 2 and Table 1. Install flange nuts (5) onto seat mounting studs on rear fender.
3. Discard stock grab strap and hardware.
4. Remove seat mount nut (A) and retaining ring (B) from rear seat mount hole on rear fender. Save seat mount nut and retaining ring for later use.
5. Remove plastic cap (D) from forward seat mount hole on rear fender. Save plastic cap for later use.

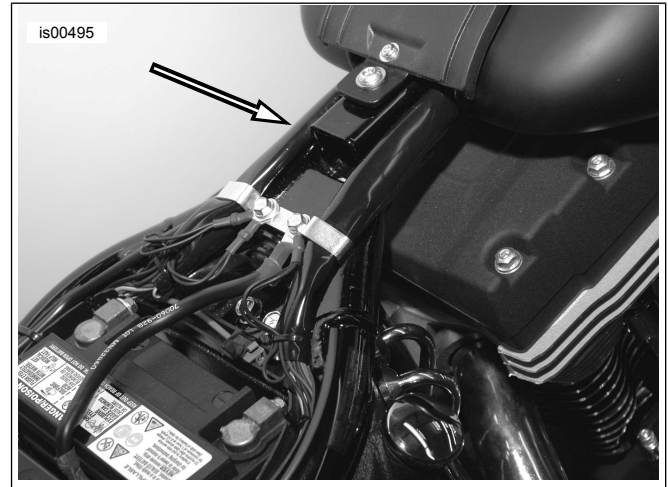


Figure 1. Seat Mounting Location in Frame

### INSTALL CUSTOM SOLO SEAT

#### NOTE

When installing this kit, do not scratch painted surfaces (fender, tank, and so on) with metal tab on seat.

This seat is for solo driver use only. Do not attempt to carry a passenger with this custom solo seat installed.

1. See Figure 2 and Table 1. Install seat mount nut (A) and retaining ring (B) previously removed in forward seat mount hole on rear fender (C).
2. Install plastic cap (D) previously removed in rear seat mount hole on rear fender.
3. See Figure 1. Fully engage the front seat-mounting tab on the custom solo seat (1) into the hole in the frame.
4. Fasten the new seat to the fender using the knurled knob (2) and neoprene washer (3).

#### ⚠ WARNING

After installing seat, pull upward on seat to be sure it is locked in position. While riding, a loose seat can shift causing loss of control, which could result in death or serious injury. (00070b)

5. Remove adhesive backing from emblem (4) and apply emblem to the center recess on the knurled knob. Apply even pressure to the emblem for one minute.



# SERVICE PARTS

is00499

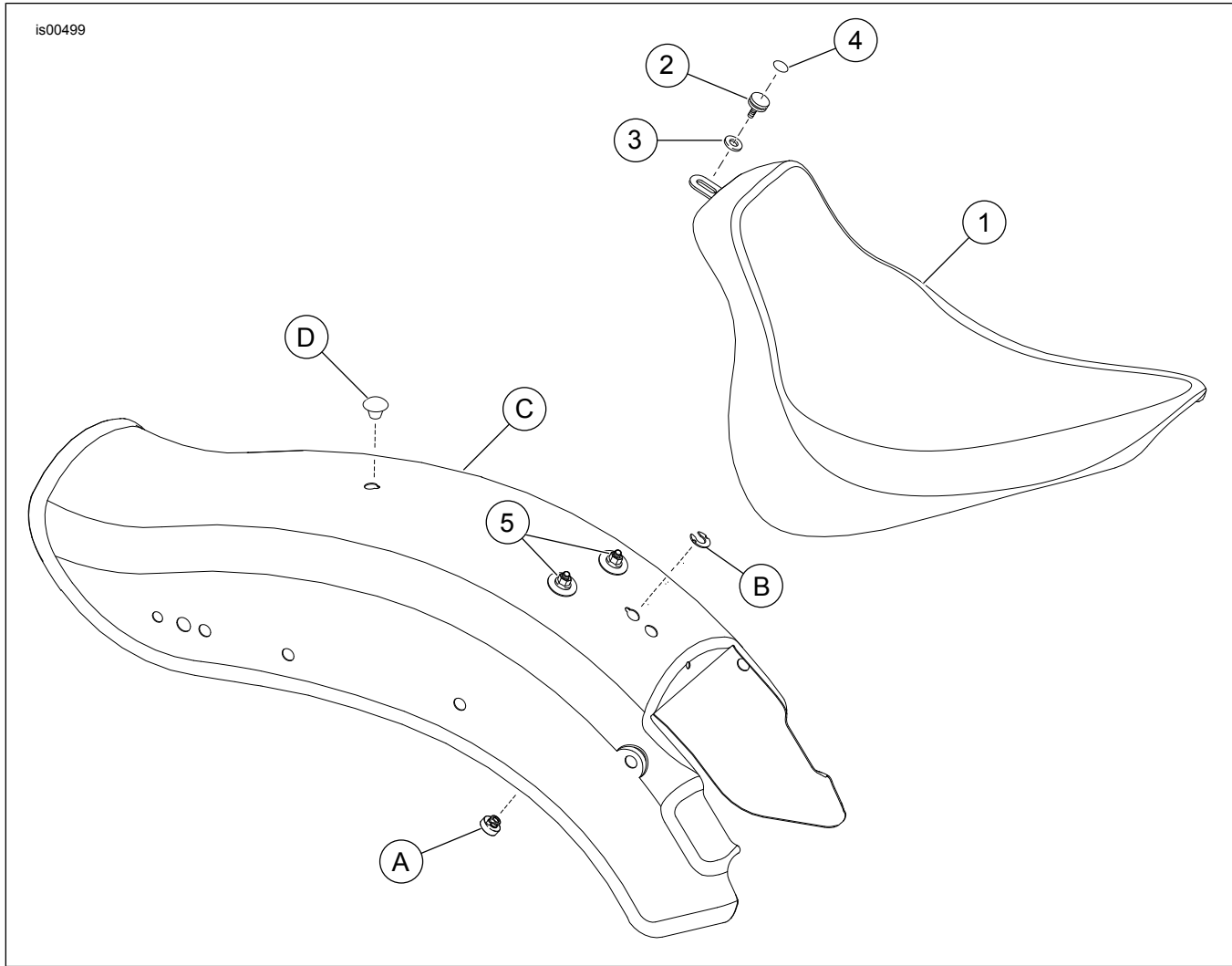


Figure 2. Service Parts: Softail Custom Solo Seat Kit

Table 1. Service Parts: Softail Custom Solo Seat Kit

Item	Description (Quantity)	Part Number
1	Solo seat	Not Sold Separately
2	Knurled knob	3649
3	Neoprene washer	6205
4	Emblem	14628-96
5	Flange nuts	7499
-	Leather dressing (not shown)	Not Sold Separately
<b>Items mentioned in text, but not included in kit:</b>		
A	Seat mount nut	
B	Retaining ring	
C	Rear fender	
D	Plastic cap	