



INSTRUCTIONS

J05526

2011-12-07



XL STARTER COVER

GENERAL

Kit Numbers

34800007, 34800008

Models

For model fitment information, see the P&A Retail Catalog or the Parts and Accessories section of www.harley-davidson.com (English only).

⚠ WARNING

Rider and passenger safety depend upon the correct installation of this kit. If the procedure is not within your capabilities or you do not have the correct tools, have a Harley-Davidson dealer perform the installation. Improper installation of this kit could result in death or serious injury. (00308b)

Kit Contents

Table 1. Parts Table

Item	Description	Quantity
1	Starter cover	1
2	Solenoid bracket	1
3	Screw	1
4	Spacer	1
5	Acorn nut	2
6	Washer	2
7	Oil line sheath	1
8	Cable tie	1

There are no service parts included in this kit.

XL STARTER COVER INSTALLATION

⚠ WARNING

To prevent accidental vehicle start-up, which could cause death or serious injury, disconnect battery cables (negative (-) cable first) before proceeding. (00307a)

⚠ WARNING

Disconnect negative (-) battery cable first. If positive (+) cable should contact ground with negative (-) cable connected, the resulting sparks can cause a battery explosion, which could result in death or serious injury. (00049a)

1. Disconnect battery cables, negative (-) cable first.
2. Remove rear exhaust pipe.
3. See Figure 1. Remove the fastener (1) securing electronic control module (ECM) cover. Remove cover.

4. See Figure 2. Remove fuel pump connector (1) and rear oxygen (O2) sensor connector (2) from ECM cover. Disconnect rear O2 sensor connector.
5. See Figure 3. Remove screws (2, 3, 6), washer (5) and exhaust pipe clamp bracket (4) securing sprocket cover (1). Remove sprocket cover.
6. See Figure 4. Remove the hose clamp fastener (1) and hose clamp (3). Remove hose clip (2) from oil lines. Remove the plastic cap (4) from the top starter stud. These items will not be reused.

NOTE

Do not tighten the cable tie so tight as to compress the oil lines.

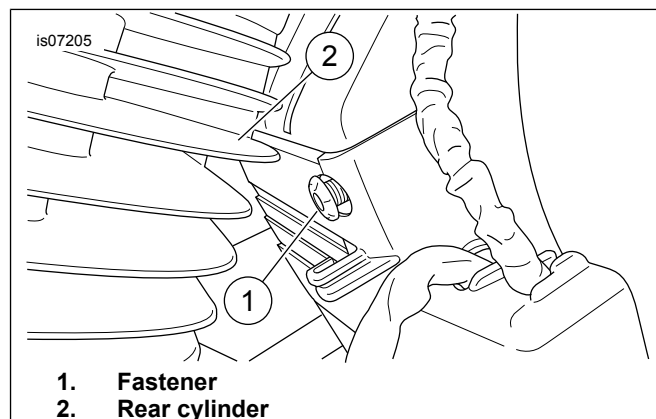


Figure 1. Electronic Control Module (ECM) Cover

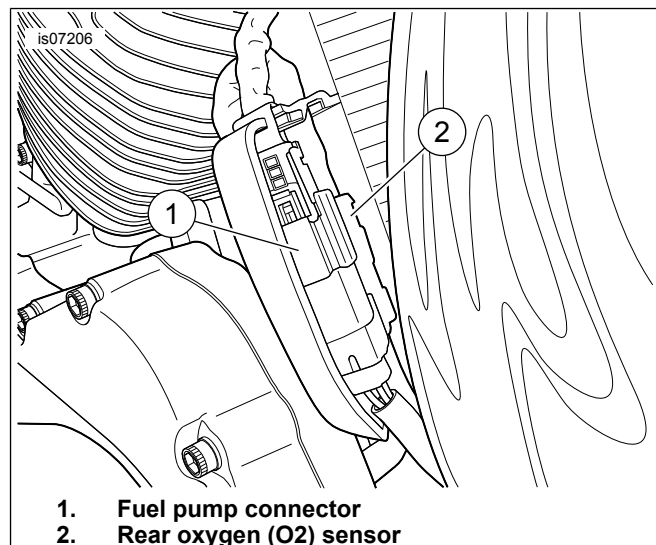


Figure 2. Connectors



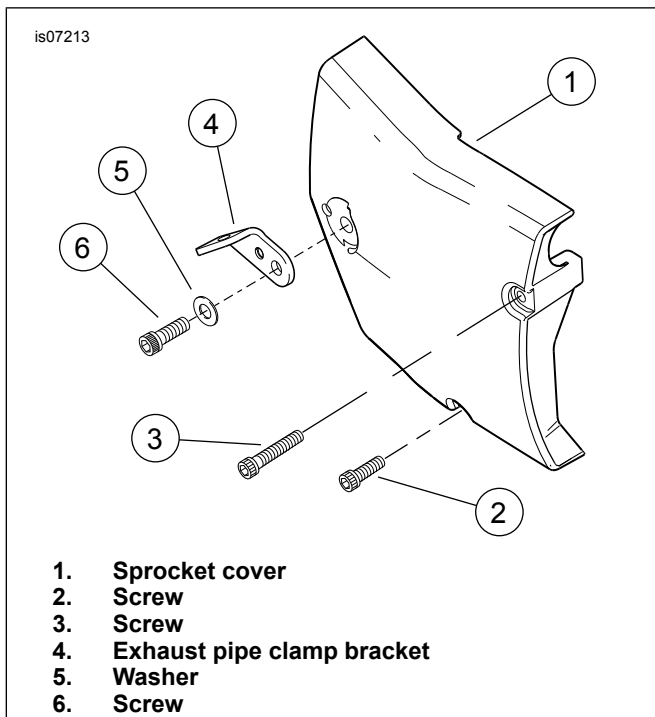


Figure 3. Sprocket cover

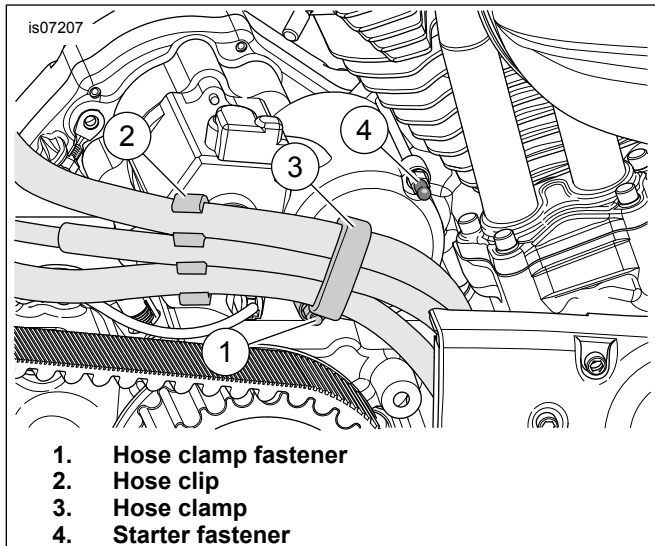


Figure 4. Oil Line Hose Clamp

11. See Figure 8. Place the starter cover (2) over the starter bracket and the top stud of the starter. Make sure the protective sheathing (1) is positioned to protect the top oil line from the rear edge of the cover. Using the included acorn nuts and washers on the stud and the socket head cap screw, attach the cover. Tighten securely.

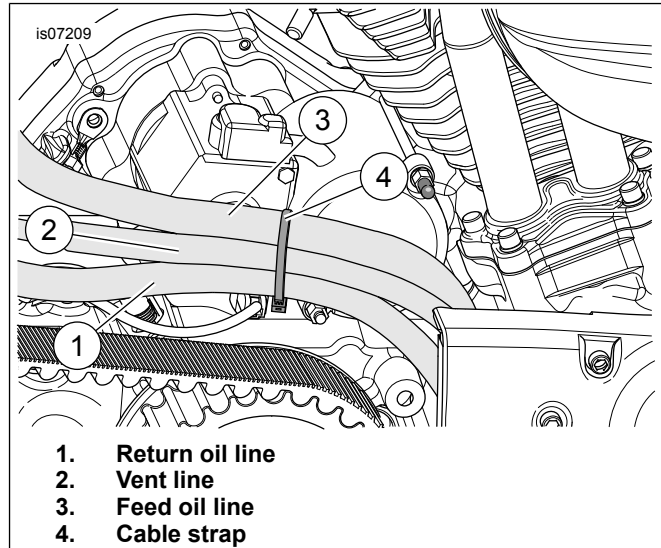


Figure 5. Cable Strap

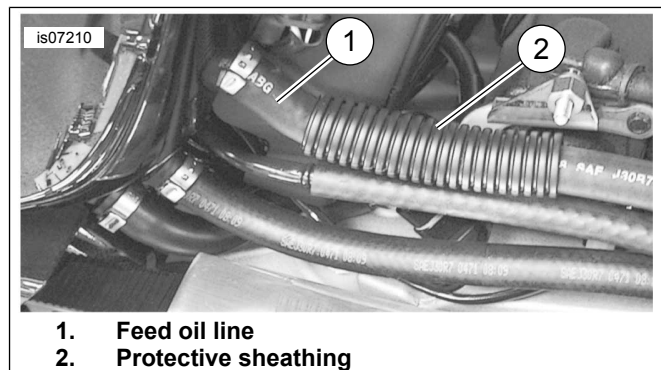


Figure 6. Protective Sheathing

7. See Figure 5. Using the cable strap (4), arrange the oil lines as shown and secure the cable tie around them.
8. See Figure 6. Install the included protective sheathing (2) over the feed oil line (1).
9. See Figure 7. Obtain the screw and spacer from the kit. Install the screw (1) through the back side of the included starter bracket (2). Thread the spacer on and tighten securely. This will face out from the bracket.
10. Remove the fasteners (3) from the solenoid cover and install the bracket reusing these fasteners.

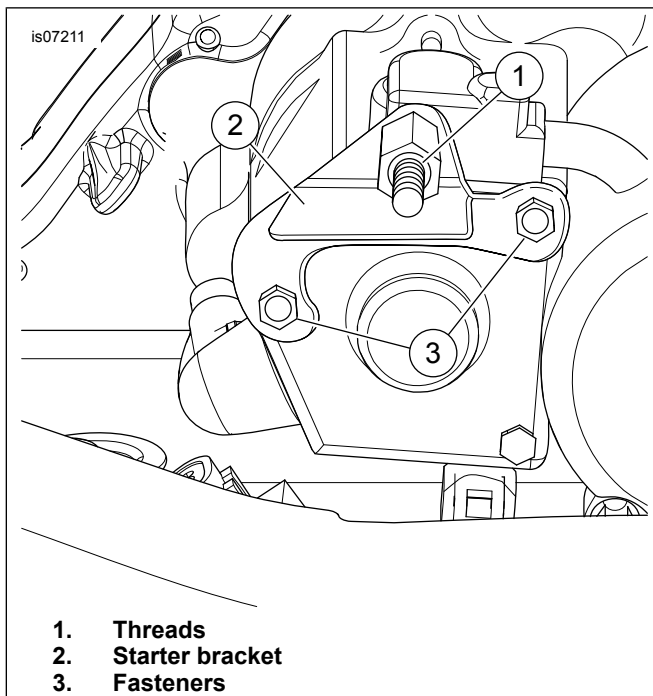


Figure 7. Starter Bracket

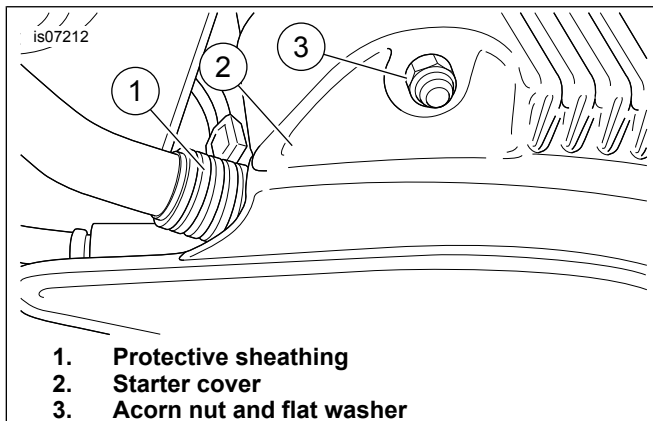


Figure 8. Starter Cover

12. See Figure 3. Replace the sprocket cover. Install exhaust pipe clamp bracket (4), washer (5) and screws (2, 3, 6). Tighten screw (6) to 40.7–44.8 N·m (30–33 ft-lbs). Tighten screws (2, 3) to 9–13.6 N·m (80–120 in-lbs).
13. Replace the rear exhaust pipe, if removed. Tighten securely. Plug in the oxygen sensor connector. Place this and the fuel pump harness in the slots in the cover and replace the ECU cover.

⚠ WARNING

Connect positive (+) battery cable first. If positive (+) cable should contact ground with negative (-) cable connected, the resulting sparks can cause a battery explosion, which could result in death or serious injury. (00068a)

14. Connect battery cables, positive (+) cable first.