



INSTRUCTIONS

J03249

2013-07-31



OIL COOLER KIT FOR TOURING MODELS

GENERAL

Kit Number

26082-05C

Models

For model fitment information, see the P&A Retail Catalog or the Parts and Accessories section of www.harley-davidson.com (English only).

This kit will not fit models equipped with chrome display stand (99002-97A) or models equipped with a sidecar.

⚠ WARNING

Rider and passenger safety depend upon the correct installation of this kit. If the procedure is not within your capabilities or you do not have the correct tools, have a Harley-Davidson dealer perform the installation. Improper installation of this kit could result in death or serious injury. (00308b)

Recommended Special Tools

Oil filter wrench (HD-44067A) is recommended for installation of this kit. It is available for separate purchase from a Harley-Davidson dealer.

Kit Contents

See Figure 6 and Table 1.

INSTALLATION

1. See Figure 1. Remove the spin-on filter (1) and oil filter adapter (2) from oil filter mount (3). Discard filter adapter. Clean filter mounting area thoroughly.

NOTICE

Incorrect gasket alignment and installation can cause filtered and unfiltered oil to mix, which can result in engine damage. (00420b)

NOTE

The oil adapter assembly has a flange protruding from the back. This flange must be installed toward the oil filter assembly and through the oil adapter gasket.

Adjust the angle of the adapter assembly to prevent the filter adapter from contacting other vehicle components while the vehicle is running. Incorrect adapter installation can result in damage to the oil filter assembly.

2. See Figure 2. Align flange (3) so it is installed into oil adapter gasket cutout (4).

3. See Figure 6. With the oil adapter gasket (8) and oil adapter assembly (1) in place, install the oil adapter fitting (7) through the oil adapter assembly with the coated threads facing inward and internal hex facing outward. Tighten to 16.3–21.7 N·m (12–16 ft-lbs).
4. See Figure 3. Remove and disconnect the stator/regulator connector (1) from the bracket on the bottom of the voltage regulator.
5. Remove voltage regulator mounting nuts, washers and star washers from stud (2) and save for installation.
6. Pull up to remove voltage regulator from mounting studs.

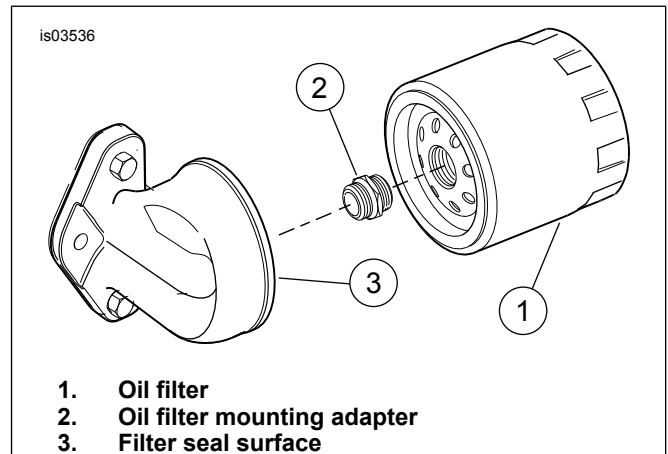


Figure 1. Stock Filter Mounting Bracket

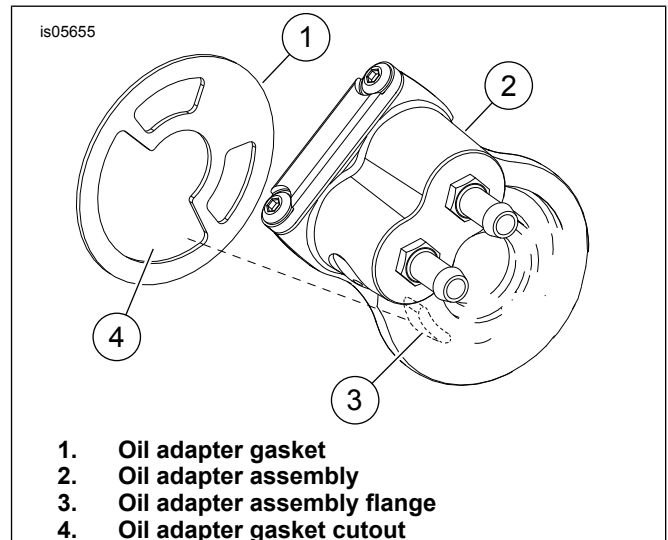


Figure 2. Oil Adapter Assembly Alignment



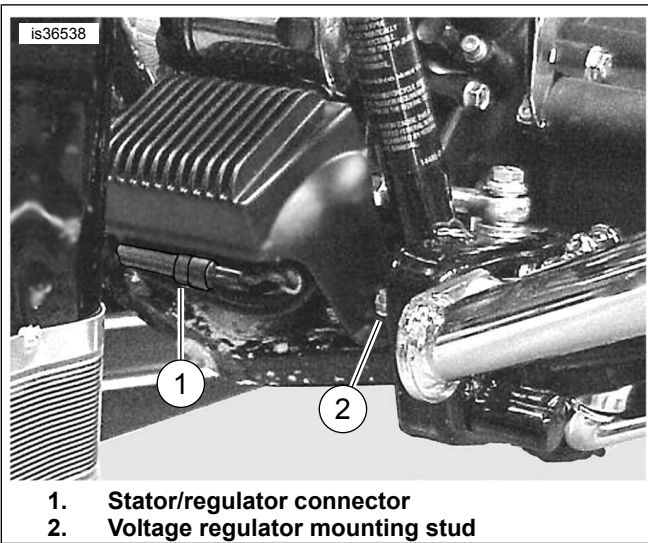


Figure 3. Remove Stator/Regulator Connector

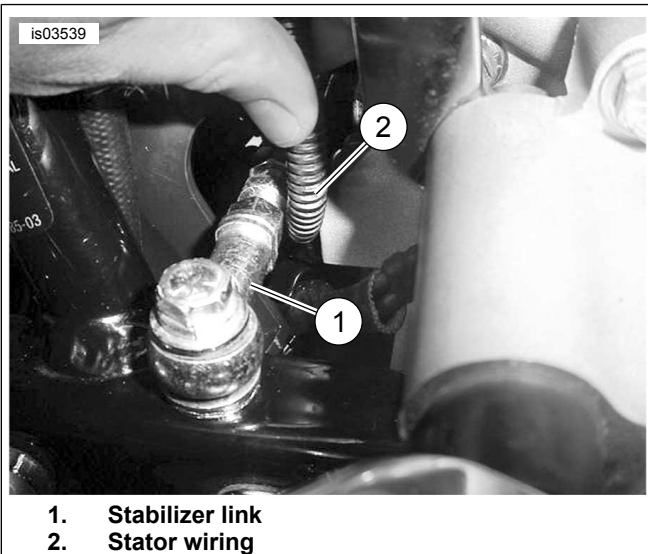


Figure 4. Stator Wiring and P-clip

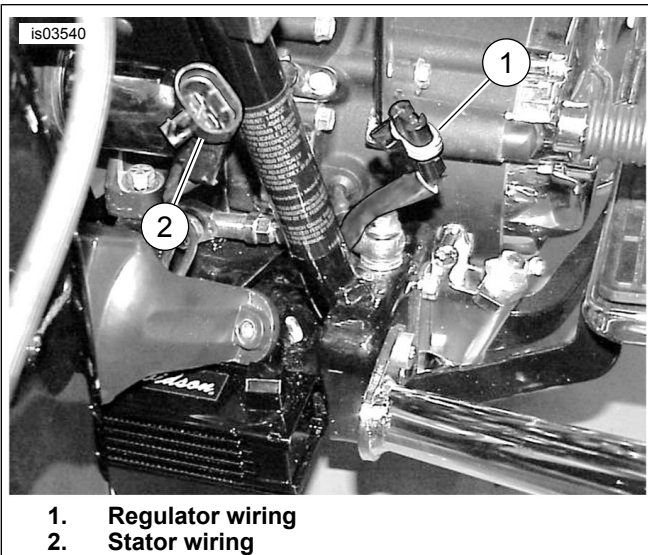


Figure 5. Stator and Regulator Wiring

NOTE

To route the oil cooler lines correctly, the P-clip together and the stator wiring must be rotated 180 degrees from the original position.

7. See Figure 4. Do not remove P-clip from stud. Rotate the P-clip and the stator wire (2) on left side 180 degrees so the stator wire will be routed to inside the left leg of regulator.
8. Verify that the stator wiring is routed under the engine stabilizer link (1). Leave the end of the stator wiring out near the left frame downtube. Be sure the P-clip on the right side is in place, it will not be removed.
9. See Figure 6. Install the oil cooler cover (12) over the oil cooler studs, then install the mounting bracket (9) over the studs. Secure the bracket and cover to the oil cooler with the three washers (3) and three nuts (4). Tighten the nuts to 10.8–13.5 N·m (96–120 in-lbs).
10. Install the oil cooler mounting bracket onto the regulator mounting studs. Place the wire mounting bracket on top of the oil cooler mounting bracket, then install the voltage regulator on the studs over the oil cooler bracket. Secure the regulator using the hardware previously removed, but do not tighten at this time.
11. See Figure 5. Connect stator (2) and regulator (1) wiring connections, then position the connector onto the bracket on bottom of the voltage regulator.

NOTE

Make sure regulator wires are routed so that they do not pinch or rub against components.

12. Tighten regulator nuts to 9.5–13.6 N·m (84–120 in-lbs).
13. See Figure 6. Install the long hose (11) and short hose (10) from the kit. Follow the markings on hoses to connect onto the oil cooler and oil cooler adapter.

NOTE

Check that hose routing is clear of the oil filter and sharp edges. The hoses must be free of bends or kinks that could obstruct oil flow.

When performing the following steps, position the worm drive clamps to avoid interference with oil filter installation.

14. Fasten hoses to oil filter adapter and oil cooler with worm drive clamp (6). Tighten to 0.9 N·m (8 in-lbs).

NOTE

Using oil filter wrench (HD-44067A) will prevent damage to the crankshaft position sensor.

15. Install oil filter with oil filter wrench (HD-44067A).

2004 and Earlier Models

NOTICE

Oil level cannot be accurately measured on a cold engine. For pre-ride inspection with the motorcycle upright (not leaning on jiffy stand) on level ground, the oil should register approximately at the midpoint of the cross-hatch area on the dipstick when the engine is cold. Do not add oil to bring the level to the full mark on a cold engine. (00186b)

NOTE

For 2005 and Later Models: Refer to the owner's manual for oil level cold check instructions.

16. Add oil to FILL level on dipstick.
17. Start the motorcycle and check for oil leaks on and around installed parts. Add oil as needed.

SYSTEM FLOW TEST - ALL MODELS

NOTICE

Oil level cannot be accurately measured on a cold engine. For pre-ride inspection, with motorcycle leaning on jiffy stand on level ground, oil should register on dipstick between arrows when engine is cold. Do not add oil to bring the level to the FULL mark on a COLD engine. (00185a)

NOTICE

Do not operate the engine when the oil level is below the add mark on the dipstick at operating temperature. Engine damage will result. (00187b)

1. Start engine. Examine all hose connections for leaks. If there is no leakage, allow engine to warm up.
2. Verify that temperature of oil cooler increases as engine reaches operating temperatures. If the oil cooler remains cool after engine warmup, there may be an oil obstruction. Turn off engine and check system for obstruction.
3. After engine has cooled, tighten all hose clamps again to 0.9 N·m (8 in-lbs).

SERVICE PARTS

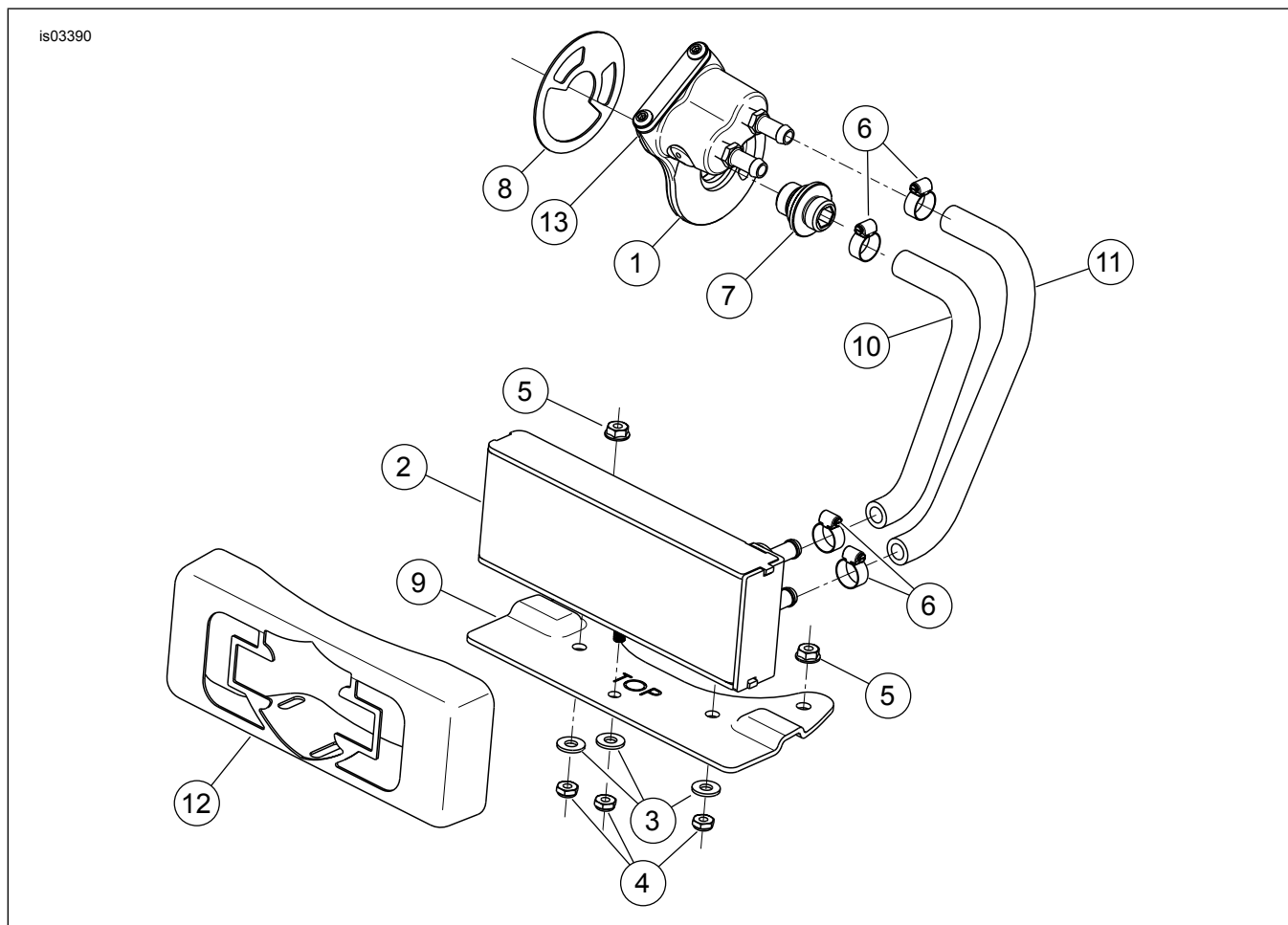


Figure 6. Service Parts for Touring Oil Cooler Kit with Chrome Oil Cooler Cover

Table 1. Service Parts Table

Item	Description (Quantity)	Part Number
1	Adapter assembly, oil cooler	26067-05B
2	Oil cooler core	63068-07
3	Washer (3)	6703
4	Locknut, nylon insert (3)	7671
5	Flange nut (2)	7716
6	Clamp, worm drive (4)	9823
7	Adapter, oil filter	26041-05A
8	Gasket, oil cooler adapter	Not Sold Separately
9	Mounting bracket, oil cooler	62108-03
10	Hose, preformed, short	Not Sold Separately
11	Hose, preformed, long	Not Sold Separately
12	Cover, oil cooler	63056-07A
13	Gasket	Not Sold Separately
14	Rubber oil hose service kit (not shown) - contains four clamps (6), long hose (11) and short hose (12)	62658-05
15	Gasket service kit (not shown) - contains gasket (8), gasket (13) and two screws	12056-05