



INSTRUCTIONS

J06708

2020-10-16



SOFTAIL QUARTER FAIRING

Table 1.

Kits	Suggested Tools	Skill Level	Time
57001615xxx, 57001627 (Obsolete - Do Not Install On Vehicle: 57000980, 57000981xxx)	Safety Glasses, Torque Wrench	1	1 hour
<i>(1) Tightening to torque value or other moderate tools and techniques required</i>			

KIT CONTENTS

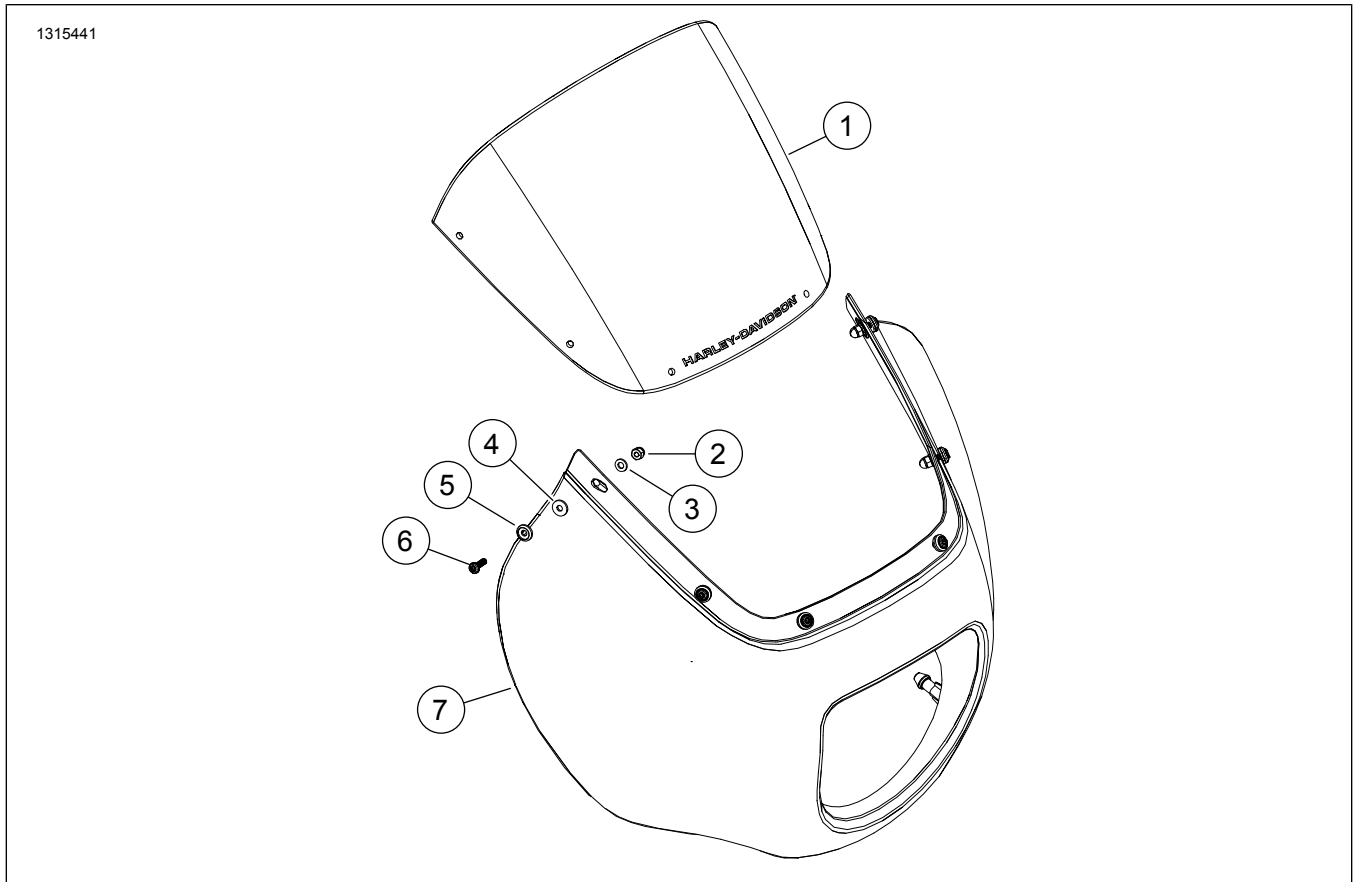


Figure 1. Service Parts: Rider Backrest Components

Table 2. Service Parts List: Rider Backrest Components

<input checked="" type="checkbox"/>	Item	Qty	Description	Part No.	Notes
<input type="checkbox"/>	1	1	Windshield	57400399	
<input type="checkbox"/>	2	6	Nut, acorn	10100131	
<input type="checkbox"/>	3	6	Washer, flat	10300189	
<input type="checkbox"/>	4	6	Washer, rubber	10300211	
<input type="checkbox"/>	5	6	Washer, special	10300212	
<input type="checkbox"/>	6	6	Screw, pan head TORX, 8-32	10200999	2–2.3 N·m (18–20 in-lbs)
<input type="checkbox"/>	7	1	Quarter fairing	Not sold separately	

GENERAL

NOTE

Verify all contents are present in the kit before installing or removing items from vehicle.

Models

For model fitment information, please see the P&A Retail Catalog or the Parts and Accessories section of www.harley-davidson.com (English only).

Make sure you are using the most current version of the instruction sheet which is available at:
www.harley-davidson.com/isheets/-J0TEST1

Contact Harley-Davidson Customer Support Center at 1-800-258-2464 (U.S. only) or 1-414-343-4056.

Installation Requirements

⚠ WARNING

Rider and passenger safety depend upon the correct installation of this kit. If the procedure is not within your capabilities or you do not have the correct tools, have a Harley-Davidson dealer perform the installation. Improper installation of this kit could result in death or serious injury. (00308b)

Separate purchase of Softail Quarter Fairing Bracket Kit (Part No. 57001249 or 57001250) is required for this installation.

ASSEMBLE

1. Figure 1 Install windshield (1) to quarter fairing (7).
2. Loosely install hardware (2-6).
3. Start from the front working toward the rear, tighten hardware.
Torque: 2–2.3 N·m (18–20 in-lbs)

INSTALL

1. Align quarter fairing posts to grommets and push.