



# INSTRUCTIONS

94100096

2021-08-24



## DETACHABLE SADDLEBAG

### GENERAL INFORMATION

Table 1. General Information

Kits	Suggested Tools	Skill Level <sup>(1)</sup>
90201973	Safety Glasses, Torque Wrench, Drill (5 mm or equivalent), Center Punch	
<i>(1) Tightening to torque value or other moderate tools and techniques required</i>		

### KIT CONTENTS

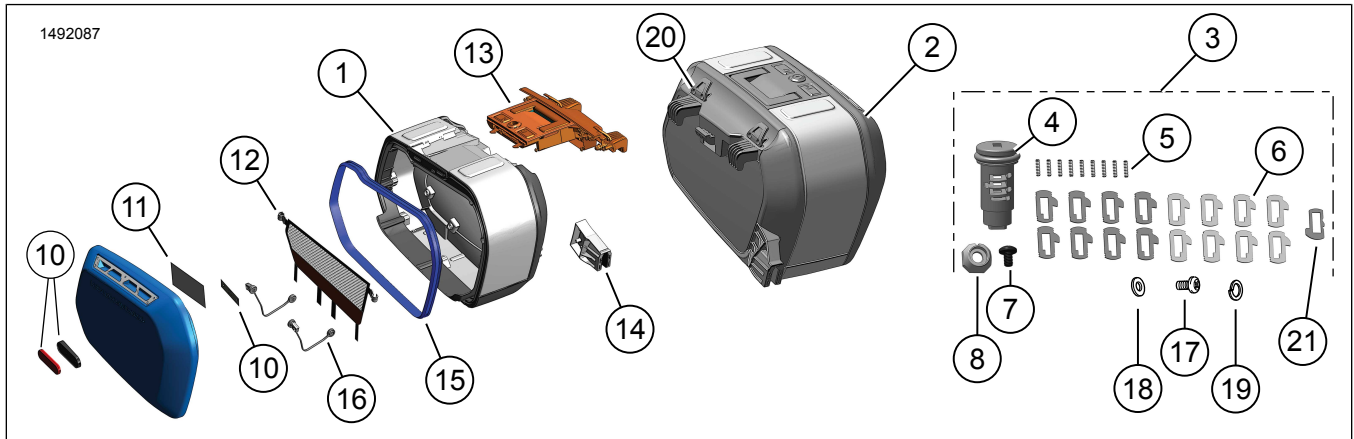


Figure 1. Kit Contents: Detachable Saddlebags

Table 2. Kit Contents: Detachable Saddlebags Kit

<input checked="" type="checkbox"/>	Verify that all contents are present in the kit before installing or removing items from vehicle.				
	Item	Qty	Description	Part No.	Notes
<input type="checkbox"/>	1	1	Bag, right	90202128	
<input type="checkbox"/>	2	1	Bag, left	90202127	
<input type="checkbox"/>	3	1	Lock Set, unkeyed (includes items 4-9, 17-19)	90300167	
<input type="checkbox"/>	4	1	Cylinder assembly	Not sold separately	
<input type="checkbox"/>	5	9	Tumbler spring	Not sold separately	
<input type="checkbox"/>	6	17	Tumbler	Not sold separately	
<input type="checkbox"/>	7	1	Screw	Not sold separately	
<input type="checkbox"/>	8	1	Nut	Not sold separately	
<input type="checkbox"/>	9	1	Grease (not shown)	Not sold separately	<b>Kluber Lubrication:</b> <ul style="list-style-type: none"> <li>• CENTOPLEX 1 DL 1 cc/1 mL/0.03 oz</li> <li>• Observe good industrial hygiene practices</li> <li>• Wash hands after handling</li> <li>• Keep out of eyes</li> <li>• <b>Chemical Nature:</b> Mineral oil, lithium calcium soap</li> </ul>
<input type="checkbox"/>	10	1	Reflector	67900205A	
<input type="checkbox"/>		1	Reflector mount, right	90202278	
<input type="checkbox"/>		1	Reflector mount, left	90202132	
<input type="checkbox"/>		1	Reflector template	Not sold separately	
<input type="checkbox"/>	11	1	Warning label	14002719	
<input type="checkbox"/>	12	1	Net kit	90202134	
<input type="checkbox"/>	13	1	Latch assembly kit, left	90202129	
<input type="checkbox"/>		1	Latch assembly kit, right	90202130	
<input type="checkbox"/>	14	1	Third-point mount kit, left	90202136	
<input type="checkbox"/>		1	Third-point mount kit, right	90202137	
<input type="checkbox"/>	15	1	Gasket kit	53000852	
<input type="checkbox"/>	16	1	Lid tether kit	90202131	
<input type="checkbox"/>	17	1	Screw	Not sold separately	Not used. Discard
<input type="checkbox"/>	18	1	Washer	Not sold separately	Not used. Discard
<input type="checkbox"/>	19	1	Lockwasher	Not sold separately	Not used. Discard
<input type="checkbox"/>	20	2	Bungee hook	90202133	
<input type="checkbox"/>	21	1	Retention tumbler	Not sold separately	

## GENERAL

### Models

For model fitment information, see the Parts and Accessories (P&A) Retail Catalog or the Parts and Accessories section of [www.harley-davidson.com](http://www.harley-davidson.com).

Verify that the most current version of the instruction sheet is used. It is available at: [h-d.com/isheets](http://h-d.com/isheets)

Contact Harley-Davidson Customer Support Center at 1-800-258-2464 (U.S. only) or 1-414-343-4056.

### Installation Requirements

#### ⚠ WARNING

Rider and passenger safety depend upon the correct installation of this kit. If the procedure is not within your capabilities or you do not have the correct tools, have a Harley-Davidson dealer perform the installation. Improper installation of this kit could result in death or serious injury. (00308b)

#### ⚠ WARNING

See ACCESSORIES AND CARGO section within the SAFETY FIRST section in your owner's manual. Improper cargo loading or accessory installation can cause component failure and adversely affect stability, handling and performance, which could result in death or serious injury. (00021c)

- Do not exceed 22 lbs (10 kg) total weight contents and attachments per bag.
- Periodically recheck load.

#### ⚠ WARNING

Do not exceed the motorcycle's Gross Vehicle Weight Rating (GVWR) or Gross Axle Weight Rating (GAWR). Exceeding these weight ratings can lead to component failure and adversely affect stability, handling and performance, which could result in death or serious injury. (00016f)

### Installation Video



Video 1. Pan America Sport Luggage Cases Lock Install

This video is a supplement of the procedure covered in the document and can only be viewed through Service Information Portal (SIP).

## INSTALL

### Reflectors

1. Figure 2 Adhere drill template on lid.
2. Use center punch to mark drill locations.
3. Drill holes using a 5 mm drill or equivalent.
4. Remove adhesive backer from reflector bracket and install on inside of lid.
5. Secure reflector mount (4) on outside of lid to reflector bracket with screws. Hand tighten.
6. Install reflector (5).
7. Repeats steps on opposite side.

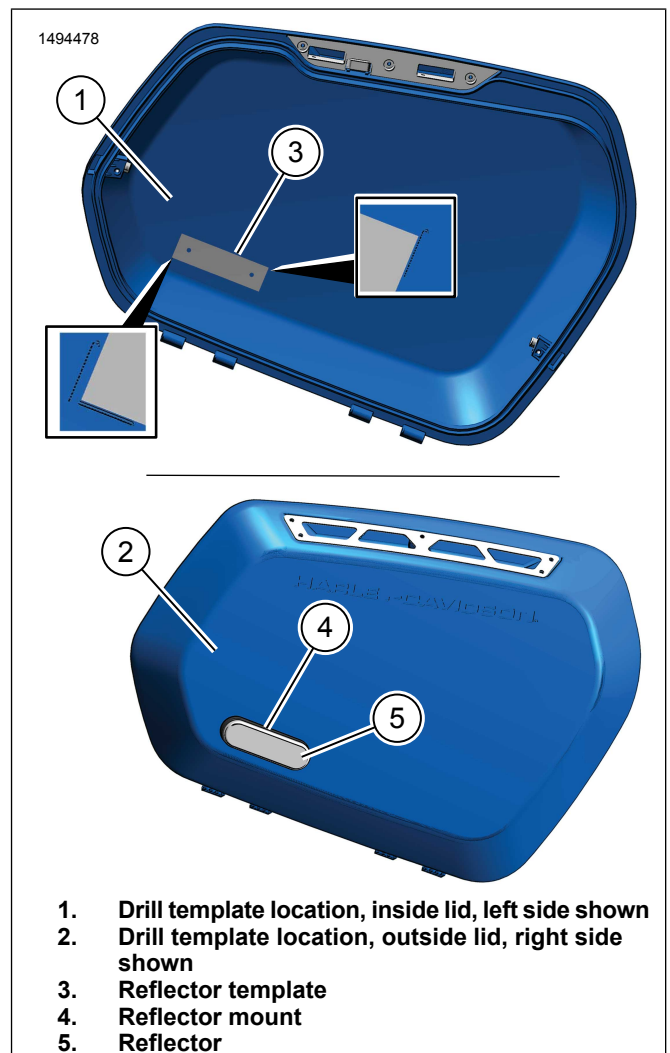


Figure 2.

## Setting Key Lock

- Figure 3 On Original Equipment (OE) vehicle key, determine cut depth at each key station.

**NOTE**

Key stations 1 and 2 are unused for saddlebag locks.

- Write values into Table 3.
- Table 3 Write key depth codes from Figure 3 based on cut depths measured.

**NOTE**

Cut depth codes to be second digit of tumbler numbers.

- Stations 7,6,3:** These stations use tumbler #11-14.
  - Stations 8,5,4:** These stations use tumbler #21-24.
- Figure 5 Install screw (1) and nut (2) to cylinder sub-assembly (4).
    - Notch (3) on nut (2) should be coincident with side (A) of cylinder.
  - Figure 5 Remove O-ring (6) from cylinder assembly (4).
  - Figure 6 With key inserted, insert cylinder assembly into lockset opening on saddlebag.
    - Notch (2) on nut should align with "open" lock position.
  - Figure 6 Using key, rotate clockwise to release position (3), release latch (4) will pop up.

- Figure 6 Remove lock cylinder sub-assembly and key from lockset opening on saddlebag.
- Figure 6 Install O-ring (6) onto cylinder assembly (4).
- Figure 4 Install tumbler springs (5), see Figure 1, into holes at stations 3,6 and 7 on side (A) of cylinder sub-assembly.
- Figure 4 Install tumblers (6), see Figure 1, #11-14 in stations 3,6 and 7 per tumble numbers determined in Table 3.

**NOTE**

Place a piece of tape or hold installed tumbler springs and tumblers with a finger to hold spring and tumblers in place before installation of springs and tumbler on opposite side of cylinder sub-assembly.

- Figure 4 Install tumbler springs (5), see Figure 1, into holes at stations 4,5 and 8 on side (B) of cylinder sub-assembly.
- Figure 4 Install tumblers (6), see Figure 1, #21-24 in stations 4,5 and 8 per tumble numbers determined in Table 3.
- Figure 5 While holding tumblers fully in place, install key in assembled cylinder sub-assembly.
- Verify that all tumblers are assembled correctly.

**NOTE**

When key is fully inserted, all tumblers should be flush with outer diameter of cylinder. Note tumblers that are not flush. If tumbler is high on the spring side, replace with next higher number tumbler. If tumbler is high on the opposite side, replace with next lower number tumbler.

**Table 3. Key Lock Instructions**

Station	Side	Measured Depth	Depth Code	Tumbler No.
3	A			1__
4	B			2__
5	B			2__
6	A			1__
7	A			1__
8	B			2__

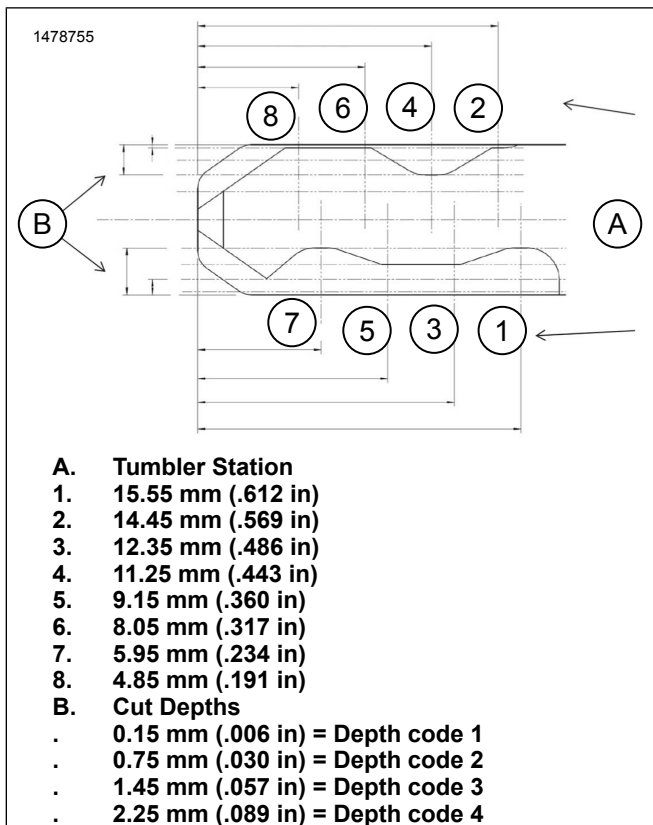


Figure 3. Key Code Diagram

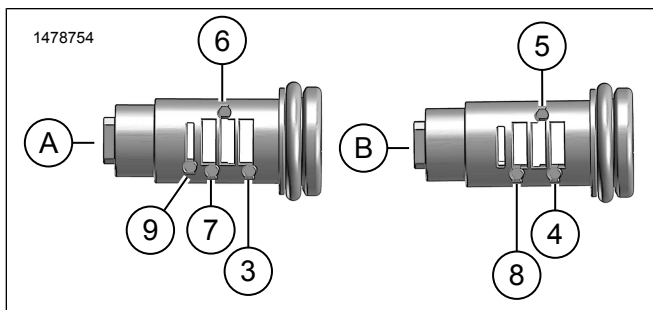


Figure 4. Spring and Tumbler Install Locations (Typical)

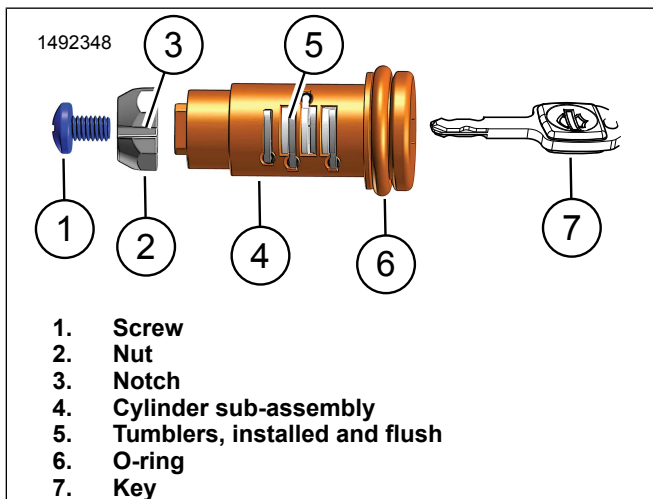


Figure 5. Assembled Lockset

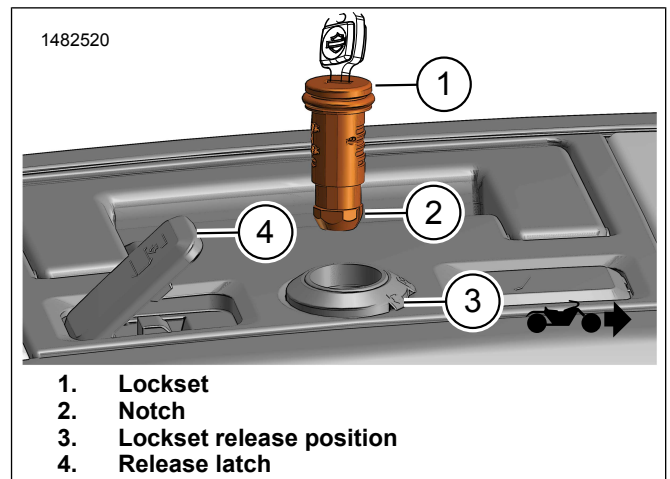
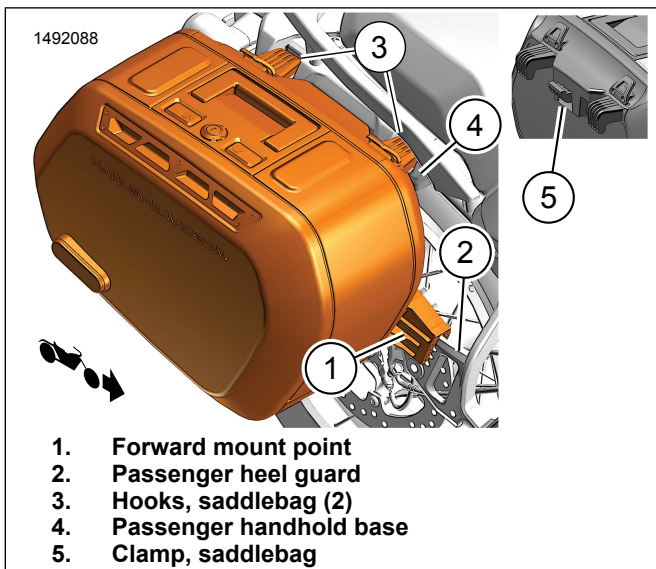


Figure 6. Install Lockset into Saddlebag

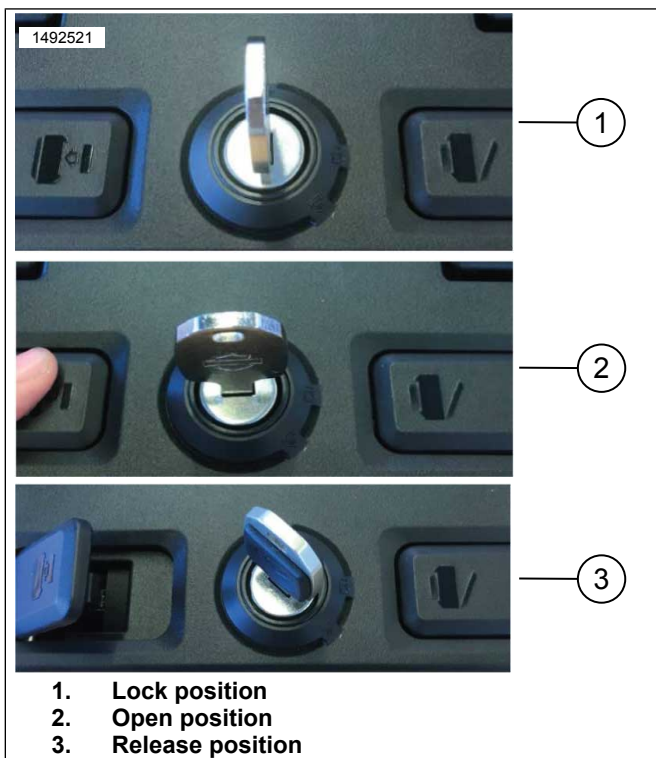
## Install Lock and Saddlebag

1. See Figure 5. While holding tumblers fully in place, remove key from cylinder sub-assembly.
2. Install tumbler spring (5) and retention tumbler (21), see Figure 1, in retention tumbler station (9).
3. Insert key, this will hold all tumblers in place.
4. Apply an even layer of grease around outer diameter of tumbler area.
5. See Figure 6. Insert fully assembled lock cylinder into lockset opening on saddlebag.
  - a. Notch (2) on nut should align with "release position" lock position.
  - b. Press down firmly until retention tumbler clicks into place.
6. Figure 8 Once lockset is installed, key can be removed in position 1 or 2.
7. Figure 7 Install forward mount point (1) over passenger heel guard (2).
8. Figure 7 Insert hooks (3) to passenger handhold base (4).
9. Figure 7 Close saddlebag clamps (5) to lock saddlebag to passenger handhold base (4).



1. Forward mount point
2. Passenger heel guard
3. Hooks, saddlebag (2)
4. Passenger handhold base
5. Clamp, saddlebag

Figure 7. Saddlebag Installation



1. Lock position
2. Open position
3. Release position

Figure 8. Lock Positions

## LOCK POSITIONS

1. **Lock Position:** lid is locked.
2. **Open Position:** lid is unlocked.
  - a. Open lid: push down on lock cylinder.
  - b. Figure 8 Lid lever, right of lock cylinder, will flip up.
  - c. Pull lever to open lid.
  - d. After closing lid, push lid lever back down.

3. **Release Position:** When key is in this position, release lever, left of lock cylinder, will flip up.

- a. Pulling lever will pop up carrying handle.
- b. Pulling up on carrying handle will release locking hook, allowing case to be removed from vehicle.

### NOTE

Before riding make sure lid and release levers are in closed position, flush with case.

## MAINTENANCE

Over time, dust and dirt can build up causing lock mechanism to become difficult to operate. If operation becomes difficult, apply white lithium grease to locations shown in Figure 9.

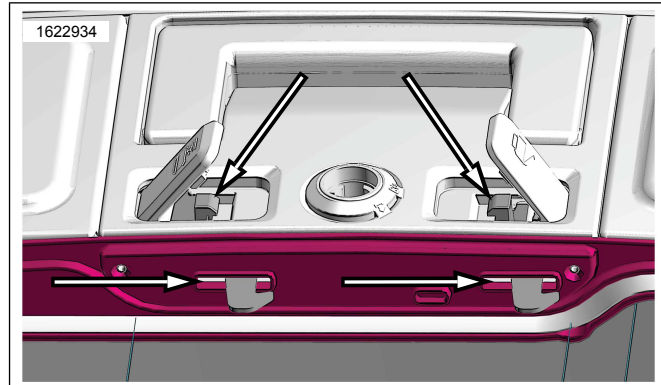


Figure 9. Lubrication - Lock Mechanism