



INSTRUCTIONS

J04369

2007-01-08



MID FRAME AIR DEFLECTORS

GENERAL

Kit Number

58022-07

Models

For model fitment information, please see the P&A Retail Catalog or the Parts and Accessories section of www.harley-davidson.com (English only).

Additional Parts Required

⚠ WARNING

Rider and passenger safety depend upon the correct installation of this kit. If the procedure is not within your capabilities or you do not have the correct tools, have a Harley-Davidson dealer perform the installation. Improper installation of this kit could result in death or serious injury. (00308b)

Kit Contents

See Figure 4 and Table 1.

INSTALLATION

1. Refer to Owner's Manual and remove seat.
2. Remove stock plastic cruise control cable clip from frame near end of fuel tank if equipped.
3. See Figure 1. Assemble speed nuts (2) to both ends of mounting strap (1) and align edges of nuts to angled ends of strap.

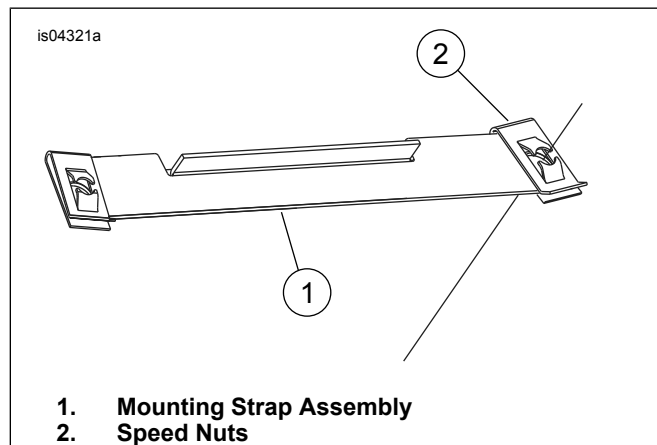


Figure 1. Install Speed Nuts to Mounting Strap

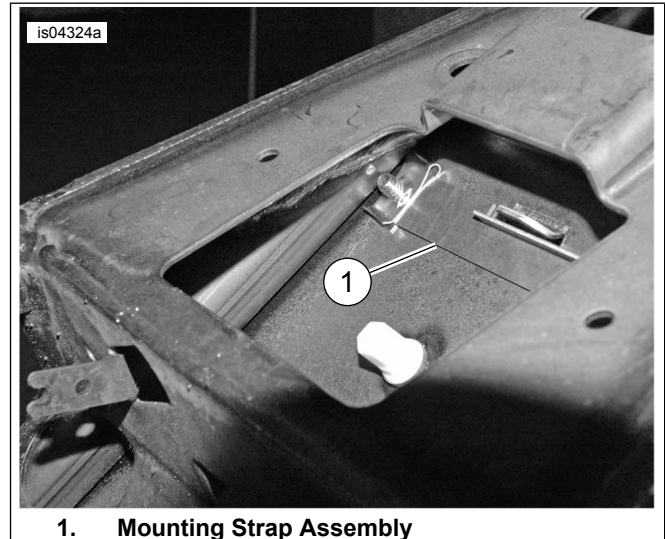


Figure 2. Mounting Strap Location

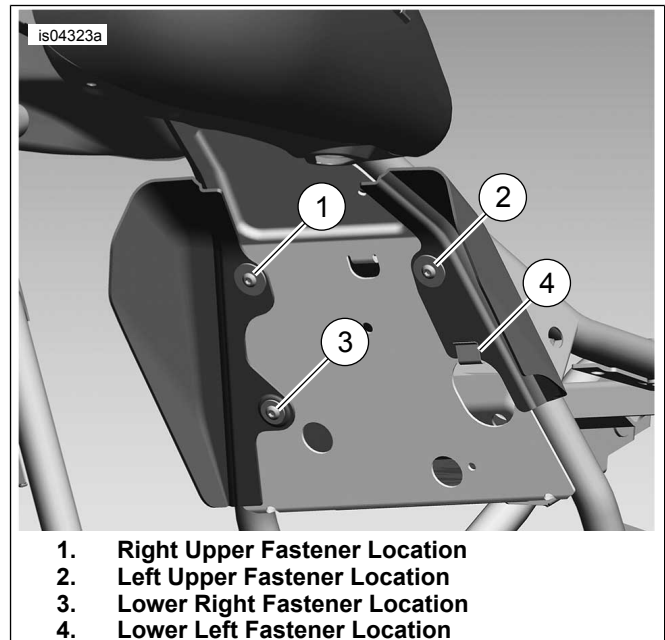


Figure 3. Fastener Locations

4. See Figure 2. Install mounting strap assembly (1) through window of frame. Position strap so speed nuts are aligned over the 0.25 inch diameter holes in frame as shown.

5. See Figure 3. Attach strap assembly to frame using using a 0.750 inch length button head screw at location (1) and the 0.875 inch length button head screw at location (2) by inserting them from the underside of frame plate. Tighten screws enough to keep strap from moving. This locates the mounting strap and prevents it from shifting position during deflector installation.
6. Refer to the Figure 4 and Table 1 to obtain the necessary parts for the following steps. Refer to Figure 3 for location references.
7. Insert well nut (7) into underside of frame plate at location (3). Apply liquid soap to the outer surface of the well nut to ease installation
8. Remove screw from location (1) on right side of frame (as viewed from the top of the motorcycle looking forward).
9. Install right side deflector (6) using screw (9) and large washer (8) in location (1) and install screw (9) with small washer in location (3). Firmly push the deflector against the outer side of frame and tighten screws to 3.9–6.2 N·m (35–55 in-lbs).

10. Remove left side strap mounting screw.
11. Install cable clamp (5) to cruise control cable (if equipped).
12. Insert screw (11) through cable clamp, washer (8) and left side deflector (10) and install to mounting strap speed nut. Firmly push deflector against outside of rail and tighten screw to 3.9–6.2 N·m (35–55 in-lbs).
13. Install "U" clip (4) to deflector and frame plate at location (4). Clip barbs should be against frame plate. Reach into the frame window (from above the frame) to release the barbs from the plate during installation.
14. Insure that the cruise control cable is positioned above the rounded area of the "U" clip.

⚠ WARNING

After installing seat, pull upward on seat to be sure it is locked in position. While riding, a loose seat can shift causing loss of control, which could result in death or serious injury. (00070b)

15. Install seat.

SERVICE PARTS

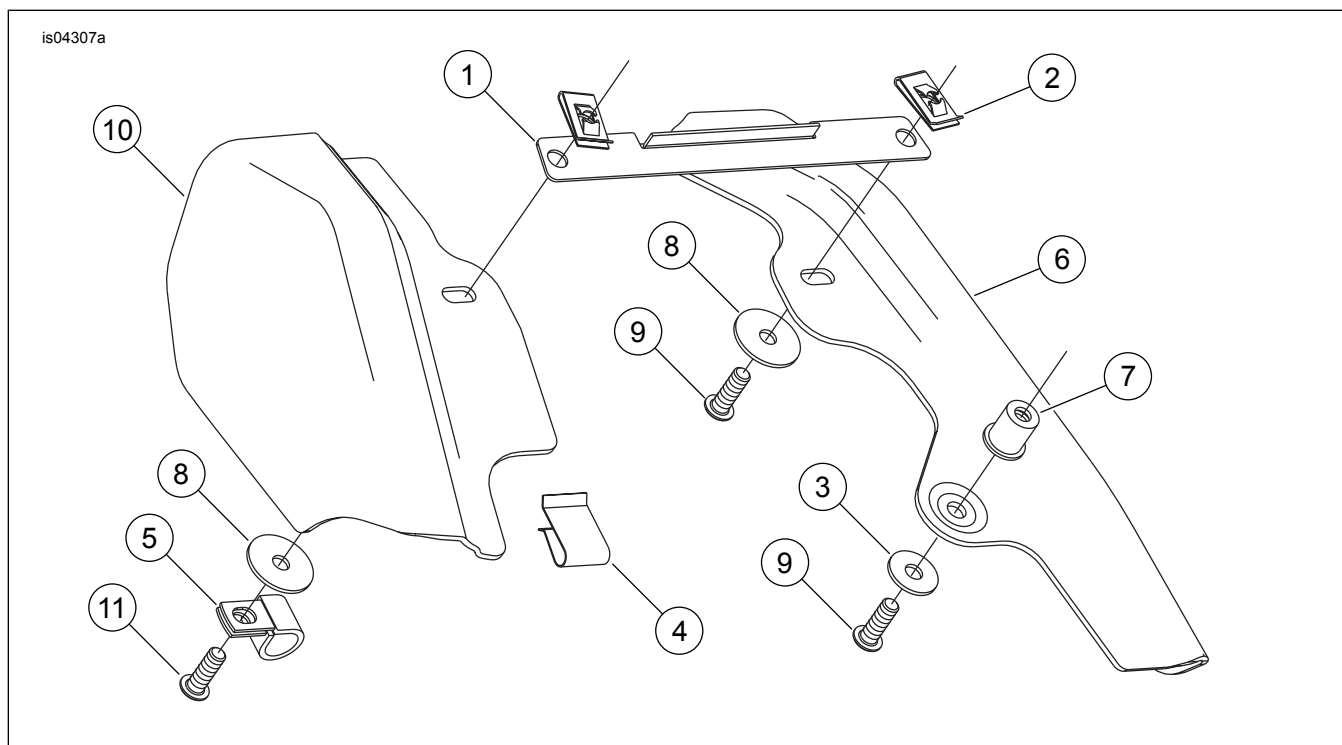


Figure 4. Service Parts: Mid Frame Air Deflectors Kit

Table 1. Service Parts Table

Item	Description (Quantity)	Part Number	Item	Description (Quantity)	Part Number
1	Strap, mounting	Not Sold Separately	7	Well nut, 0.25-20	6596
2	Nut, speed 0.25-20 inch	8108	8	Washer, flat 0.25 inch (2)	6036
3	Washer, flat, zinc plate, 0.25 inch	6253W	9	Screw, button head, 0.25-20 x 0.750 inch (2)	923
4	Clip, special "U" type	58439-07	10	Mid frame air deflector, left	Not Sold Separately

Table 1. Service Parts Table

Item	Description (Quantity)	Part Number	Item	Description (Quantity)	Part Number
5	Clamp, cable	10053	11	Screw, button head, 0.25-20 x 0.875	4015
6	Mid frame air deflector, right	Not Sold Separately			