



INSTRUCTIONS




J06365

2022-10-17

CRUISER DETACHABLE WINDSHIELD KIT

GENERAL INFORMATION

Table 1. General Information

Kits	Suggested Tools	Skill Level ⁽¹⁾
57400325, 57400328, 57400329, 57400332, 57400335, 57400367, 57400368, 57400369	Safety Glasses, Torque Wrench	
<i>(1) Tightening to torque value or other moderate tools and techniques required</i>		



KIT CONTENTS

1052443

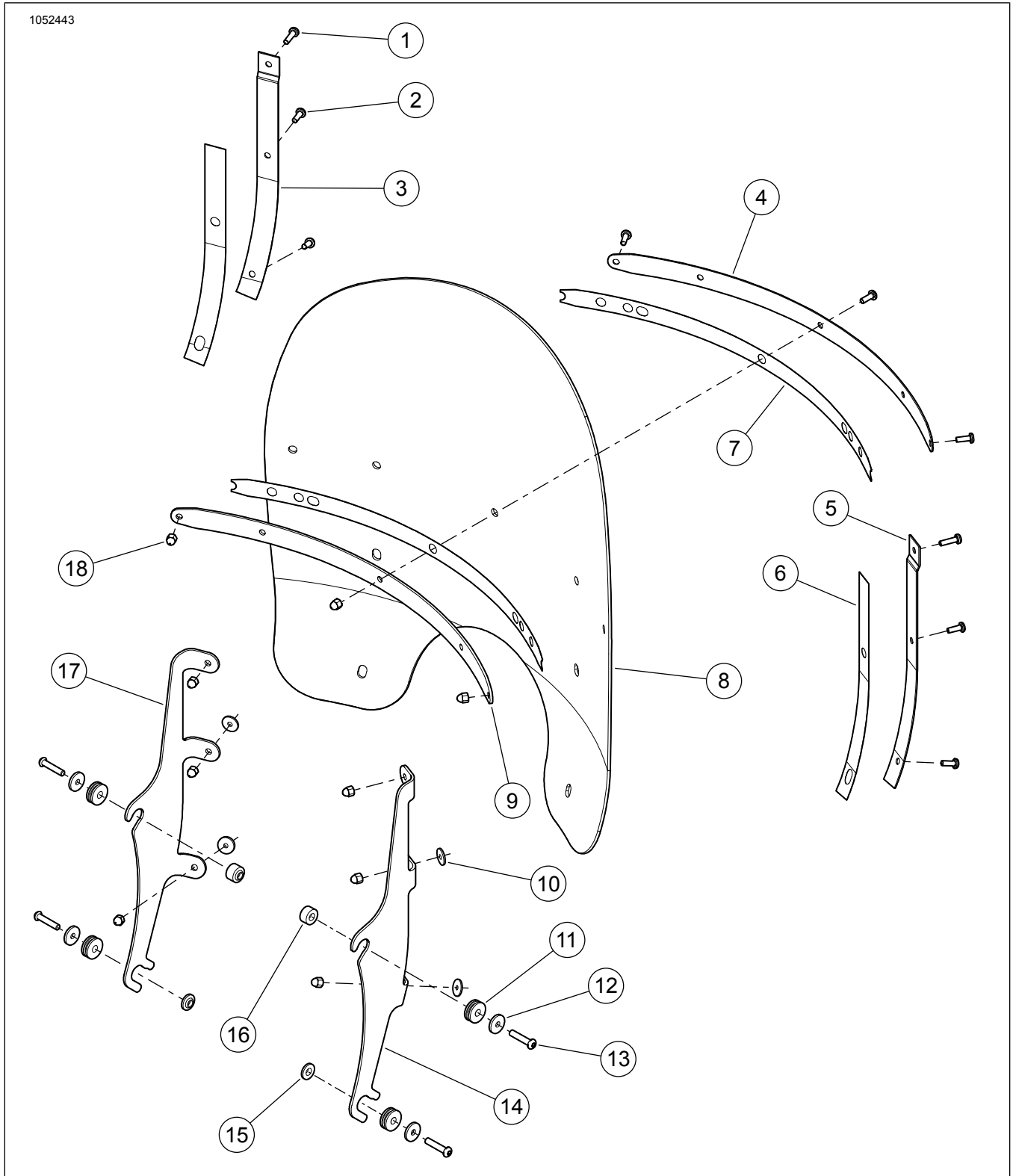


Figure 1. Kit Contents: Windshield Kits (Typical)

Table 2. Kit Contents: Windshield Kits

<input checked="" type="checkbox"/>	Verify that all contents are present in the kit before installing or removing items from vehicle.				
	Item	Qty	Description	Part No.	Notes
<input type="checkbox"/>	1	2	Screw, panhead	2452	Kits: ALL
<input type="checkbox"/>	2	7	Screw, panhead	2921A	Kits: ALL
<input type="checkbox"/>	3	1	Vertical brace, left	57300157	Kits: 57400325, 57400335, 57400369
<input type="checkbox"/>				58408-75A	Kits: 57400328, 57400332
<input type="checkbox"/>				57300155	Kits: 57400367, 57400368
<input type="checkbox"/>	4	1	Horizontal brace, outer	57300127	Kits: 57400325, 57400335, 57400369
<input type="checkbox"/>				57300132	Kits: 57400328, 57400332
<input type="checkbox"/>				57300152	Kits: 57400367, 57400368
<input type="checkbox"/>	5	1	Vertical brace, right	57300156	Kits: 57400325, 57400335, 57400369
<input type="checkbox"/>				58406-75A	Kits: 57400328, 57400332
<input type="checkbox"/>				57300154	Kits: 57400367, 57400368
<input type="checkbox"/>	6	2	Tape, windshield, vertical	58417-77	Kits: 57400325, 57400328, 57400332, 57400335, 57400369
<input type="checkbox"/>				11100168	Kits: 57400367, 57400368
<input type="checkbox"/>	7	2	Tape, windshield, horizontal	57300133	Kits: 57400325, 57400328, 57400332, 57400335, 57400369
<input type="checkbox"/>				11100187	Kits: 57400367, 57400368
<input type="checkbox"/>	8	1	Windshield	57400354	Kits: 57400325, 57400332, 57400335
<input type="checkbox"/>				57400357	Kits: 57400328, 57400369
<input type="checkbox"/>				57400353	Kit: 57400367
<input type="checkbox"/>				57400363	Kit: 57400368
<input type="checkbox"/>	9	1	Horizontal brace, inner	57300126	Kits: 57400325, 57400335, 57400369
<input type="checkbox"/>				57300131	Kits: 57400328, 57400332
<input type="checkbox"/>				57300153	Kits: 57400367, 57400368
<input type="checkbox"/>	10	4	Washer, EPDM	58152-96	Kits: ALL
<input type="checkbox"/>	11	4	Grommets	12100110	Kits: ALL
<input type="checkbox"/>	12	4	Washer	10300129	Kits: ALL
<input type="checkbox"/>	13	4	Screw	10200588	Kits: 57400325, 57400328, 57400332
<input type="checkbox"/>			Screw, buttonhead, hex ¼-20	10200709	Kits: 57400335, 57400369
<input type="checkbox"/>			Screw, buttonhead	10200610	Kits: 57400367, 57400368

Table 2. Kit Contents: Windshield Kits

Verify that all contents are present in the kit before installing or removing items from vehicle.					
<input checked="" type="checkbox"/>	Item	Qty	Description	Part No.	Notes
<input type="checkbox"/>	14	1	Bracket, right	57300123	Kit: 57400325
<input type="checkbox"/>				57300110	Kits: 57400328, 57400332
<input type="checkbox"/>				57300173	Kits: 57400335, 57400369
<input type="checkbox"/>				57300124	Kits: 57400367, 57400368
<input type="checkbox"/>	15	2	Spacer, windshield, lower	12400149	Kits: 57400335, 57400369
<input type="checkbox"/>	16	2	Spacer, windshield, upper	12400144	Kits: 57400335, 57400369
<input type="checkbox"/>		4	Spacer	12400143	Kits: 57400367, 57400368
<input type="checkbox"/>	17	1	Bracket, left	57300122	Kit: 57400325
<input type="checkbox"/>				57300111	Kits: 57400328, 57400332
<input type="checkbox"/>				57300174	Kits: 57400335, 57400369
<input type="checkbox"/>				57300125	Kits: 57400367, 57400368
<input type="checkbox"/>	18	9	Acorn nut	7651A	Kits: ALL

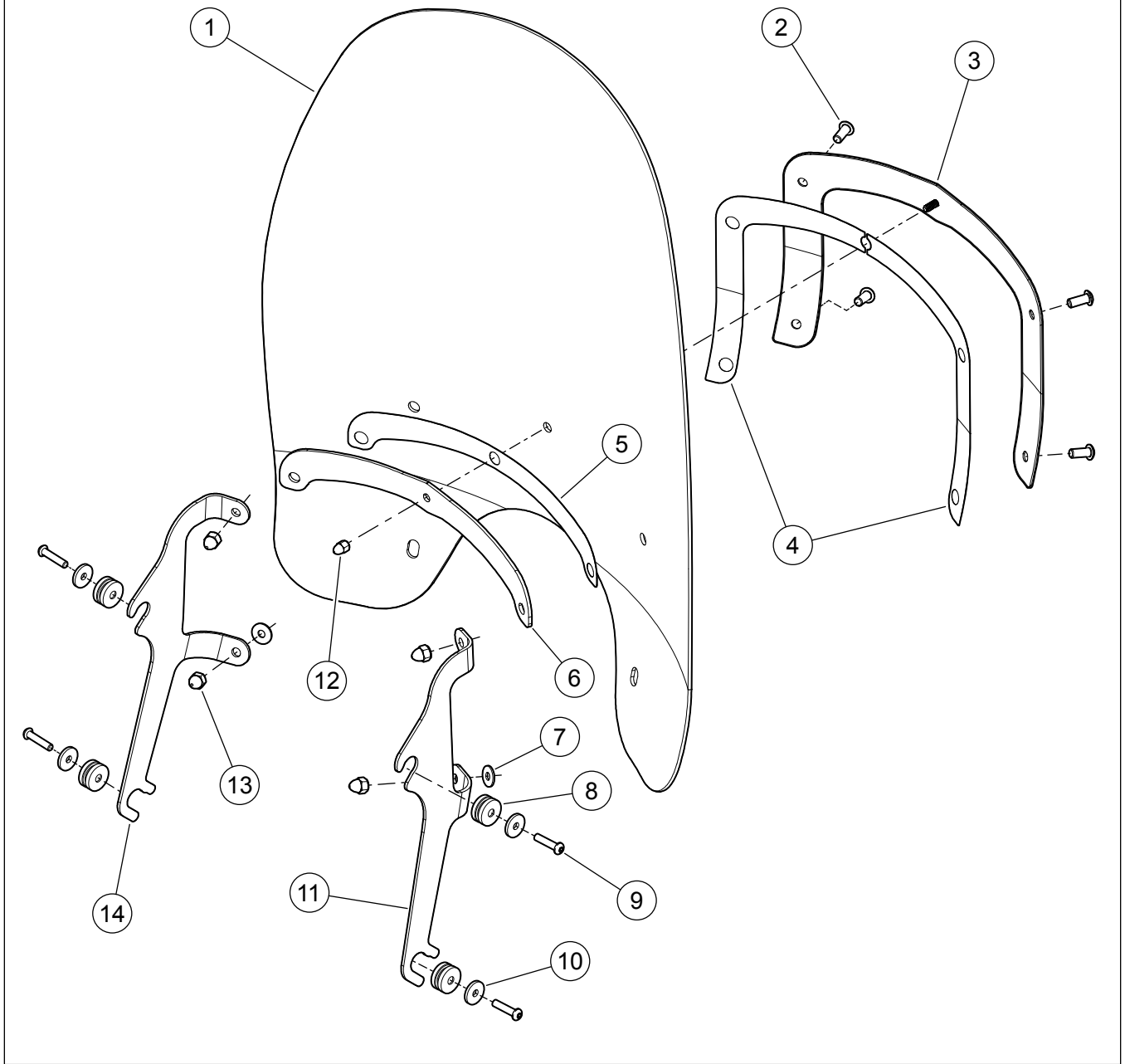


Figure 2. Kit Contents: Windshield Kits (57400329)

Table 3. Kit Contents: Windshield Kit (57400329)

<input checked="" type="checkbox"/>	Verify that all contents are present in the kit before installing or removing items from vehicle.				
	Item	Qty	Description	Part No.	Notes
<input type="checkbox"/>	1	1	Windshield	57400392	
<input type="checkbox"/>	2	4	Screw, buttonhead	94639-99	
<input type="checkbox"/>	3	1	Outer bracket assembly	57163-05	
<input type="checkbox"/>	4	2	Gasket, outer	57150-05	
<input type="checkbox"/>	5	1	Gasket, horizontal brace, inner	57151-05	
<input type="checkbox"/>	6	1	Horizontal brace, inner	57149-05	
<input type="checkbox"/>	7	2	Washer, EPDM	57964-97	
<input type="checkbox"/>	8	4	Grommets	12100110	
<input type="checkbox"/>	9	4	Screw, buttonhead	10200588	
<input type="checkbox"/>	10	4	Washer	10300129	
<input type="checkbox"/>	11	1	Bracket, right	57300158	
<input type="checkbox"/>	12	1	Acorn nut	94004-90T	
<input type="checkbox"/>	13	4	Acorn nut	94007-90T	
<input type="checkbox"/>	14	1	Bracket, left	57300159	

GENERAL

NOTE

This instruction sheet **may have a Supplemental Video** to assist installer in clarifying a certain part of the assembly. A linked video would be located at the end of this instruction sheet.

Models

For model fitment information, see the Parts and Accessories (P&A) Retail Catalog or the Parts and Accessories section of www.harley-davidson.com.

Verify that the most current version of the instruction sheet is used. It is available at: h-d.com/isheets

Contact Harley-Davidson Customer Support Center at 1-800-258-2464 (U.S. only) or 1-414-343-4056.

Installation Requirements

▲ WARNING

Rider and passenger safety depend upon the correct installation of this kit. If the procedure is not within your capabilities or you do not have the correct tools, have a Harley-Davidson dealer perform the installation. Improper installation of this kit could result in death or serious injury. (00308b)

PREPARE

NOTE

Place shop rags on the headlamp and front of the fuel tank to prevent scratches to headlamp and fuel tank. Be sure the windshield assembly does not contact chrome or painted parts. Contact will cause scratches to chrome or painted parts.

Spacers on the topmost and some of the bottom screws will fall free when the screws are removed. Take care that the spacers do not strike the fuel tank or fender, damaging the finish.

REMOVE

1. Remove stock windshield, if so equipped. Discard windshield.

NOTE

Keep front wheel straight to prevent brackets from scratching fuel tank.

2. Remove and discard Original Equipment (OE) nacelle screws from one side of vehicle.

INSTALL

1. Refer to the following substeps for **new** specific kit content:
 - a. Kits 57400325, 57400328, and 57400332: Place all **new** flat washer (12), and bushing (11) on a screw (13).
 - b. Kit 57400329: Place **new** flat washer (10), bushing (8), and spacer on a screw (9).
 - c. Kits 57400335 and 57400369: For the top locations, place **new** flat washer (12), bushing (11), and spacer (16) on a screw (13). For bottom locations, place **new** flat washer (12), bushing (11), and spacer (15) on screw (13).
 - d. Kits 57400367 and 57400368: Place **new** flat washer (12), bushing (11), and spacer (16) on a screw (13).
 - e. Thread screw (13) or screw (9) through nacelle hole, and into triple clamp. Tighten.
Torque: 9–12 N·m (7–9 ft-lbs)
2. Repeat Step 3 on the opposite side of vehicle.

NOTE

Remove OE hardware and replace with kit hardware one hole at a time for easiest installation.

3. Hook the two lower windshield assembly "jaws" into grooves of lower bushings then push the windshield until the upper bushings firmly fit into the upper windshield "jaws".

⚠ WARNING

Improper installation of accessories or loading of cargo can affect motorcycle stability and handling, which could result in death or serious injury. (00455b)

⚠ WARNING

Failure to provide adequate clearance between stationary and moving parts can cause loss of control, which could result in death or serious injury. (00378a)

NOTE

Inspect windshield upon completion of installation. Be sure windshield mounting does not restrict full left or full right movement of front fork assembly. If restriction does occur, adjust windshield as needed until proper clearance is obtained. Have experienced Harley-Davidson service personnel correct any problems before riding with this accessory installed.

NOTE

Check mounting hardware periodically. Never ride with loose mounts. A loose mounting causes extra stress on all other mounts, as well as the windshield itself, and could result in premature failure of components.

REMOVING THE WINDSHIELD

To remove windshield, grab windshield edges on each side of center brace and firmly pull windshield loose from bushing grooves.

MAINTENANCE

Care and Cleaning

NOTE

Sunlight reflections off of the inside curvature of a windshield can, at certain times of the day, cause extreme heat build-up on motorcycle instruments. Exercise care in parking. Park facing the sun, place an opaque object over the instruments, or adjust the windshield to avoid reflections.

NOTICE

Use only Harley-Davidson recommended products on Harley-Davidson windshields. Do not use harsh chemicals or rain sheeting products, which can cause windshield surface damage, such as dulling or hazing. (00231c)

Do not clean polycarbonate in hot sun or high temperature. Powdered, abrasive or alkaline cleanser will damage the windshield. Never scrape the windshield with a razor blade or other sharp instruments because permanent damage will result.

NOTE

Covering the windshield with a clean, wet cloth for about 15 minutes before washing will make dried bug removal easier.

Harley-Davidson Windshield Water Repellent Treatment Part Number 99841-01 is approved for use on Harley-Davidson windshields.