



INSTRUCTIONS

J06709

2019-08-21



SOFTAIL QUARTER FAIRING BRACKET KIT

Table 1.

Kits	Suggested Tools	Skill Level	Time
57001249, 57001250	Safety Glasses, Torque Wrench	1	1 hour
<i>(1) Tightening to torque value or other moderate tools and techniques required</i>			

KIT CONTENTS

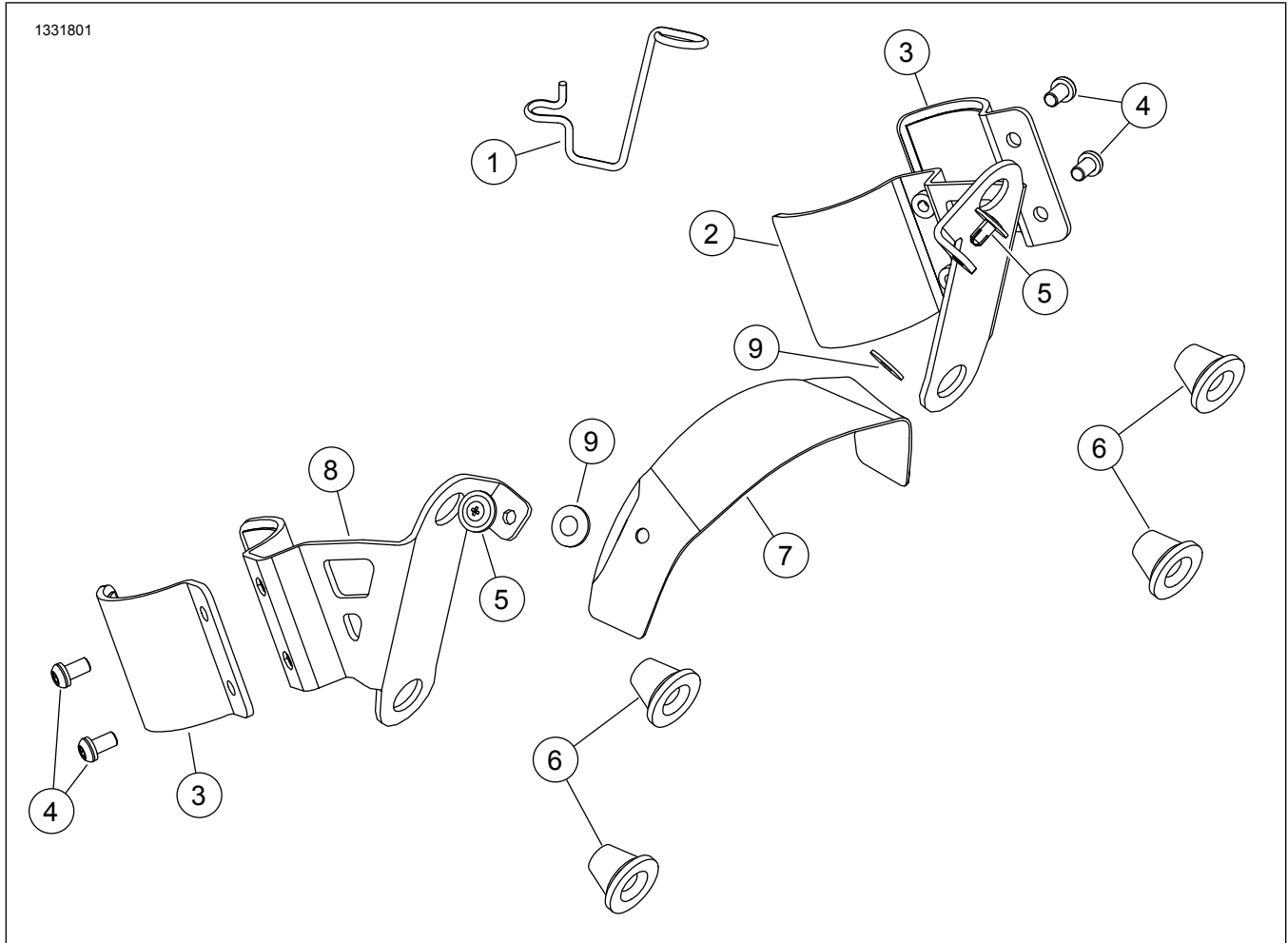


Figure 1. Service Parts: Fairing Bracket Kit

Table 2. Service Parts List: Fairing Bracket Kit

<input checked="" type="checkbox"/>	Item	Qty	Description	Part No.	Notes
<input type="checkbox"/>	1	1	Clutch cable retainer	37200428	Kit 57001249
<input type="checkbox"/>	2	1	Mounting bracket, LH	Not sold separately	
<input type="checkbox"/>	3	2	Clamp, LH and RH	Not sold separately	
<input type="checkbox"/>	4	4	Screw, 1/4-20 x 1/2	10200938	12.2–13.5 N·m (9–10 ft-lbs)
<input type="checkbox"/>	5	2	Tree fastener	12600194	
<input type="checkbox"/>	6	4	Grommet	83483-09	
<input type="checkbox"/>	7	1	Hood bracket	Not sold separately	
<input type="checkbox"/>	8	1	Mounting bracket, RH	Not sold separately	
<input type="checkbox"/>	9	2	Washer, plastic, adhesive backed	10300224	

NOTE

Verify all contents are present in the kit before installing or removing items from vehicle.

- Separate purchase of Acorn Nut (Part No. 7331) is required for this installation. **FXBB only.**

GENERAL

Models

For model fitment information, please see the P&A Retail Catalog or the Parts and Accessories section of www.harley-davidson.com (English only).

Make sure you are using the most current version of the instruction sheet which is available at: <https://h-d.com/isheets>

Contact Harley-Davidson Customer Support Center at 1-800-258-2464 (U.S. only) or 1-414-343-4056.

Installation Requirements

▲ WARNING

Rider and passenger safety depend upon the correct installation of this kit. If the procedure is not within your capabilities or you do not have the correct tools, have a Harley-Davidson dealer perform the installation. Improper installation of this kit could result in death or serious injury. (00308b)

These items are available at your local Harley-Davidson dealership.

FXBB with OE handlebars or **FXLR** with Tall Risers and Moto Bar kits:

- Separate purchase of Right Hand Turn Signal Mount Bracket (Part No. 67800630) is required for this installation.
- Separate purchase of Left Hand Turn Signal Mount Bracket (Part No. 12700164) is required for this installation.
- Separate purchase of two Screw Locks (Part No. 67015-02) is required for this installation. **FXBB only.**
- Separate purchase of Lock Washer (Part No. 7155) is required for this installation. **FXBB only.**

REMOVE

FXLRS Speed Screen

1. See Figure 2. Remove speed screen
 - a. Remove screws and washers (8).
 - b. Pull speed screen (3) away from upper bracket (7).
 - c. Pull speed screen away from lower bracket (5) to remove posts from grommets.
2. Remove inner fairing.
 - a. Remove screws (1).
 - b. Remove inner fairing (2).
3. Remove upper bracket.
 - a. Remove screws (6).
 - b. Remove upper bracket (7).
4. Remove lower bracket.
 - a. Remove screws (4).
 - b. Remove lower bracket (5).

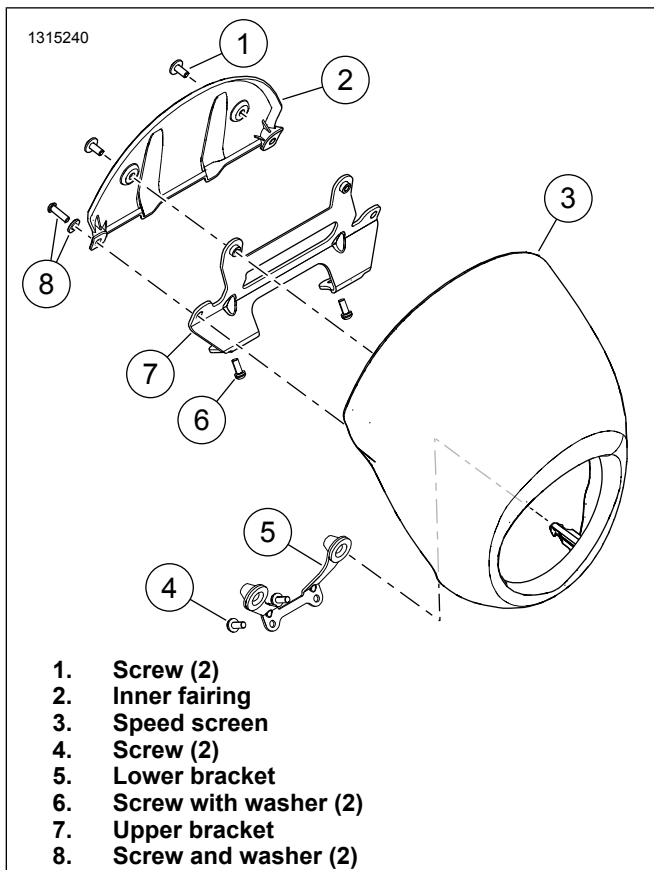


Figure 2. FXLRS Speed Screen

FXLR Visor

1. Figure 3 Remove screws (4) from upper triple clamp (5).
2. Remove visor (1).
3. Remove screw (3) and OEM clutch cable retainer.
4. Install clutch cable retainer (2) from kit.
5. Install screw (3). Tighten.
Torque: 4–5.4 N·m (35–48 **in-lbs**) *Clutch cable retainer screw*
6. Install visor (1).
7. Install screws (4). Tighten.
Torque: 4–5.4 N·m (35–48 **in-lbs**) *Visor screw*

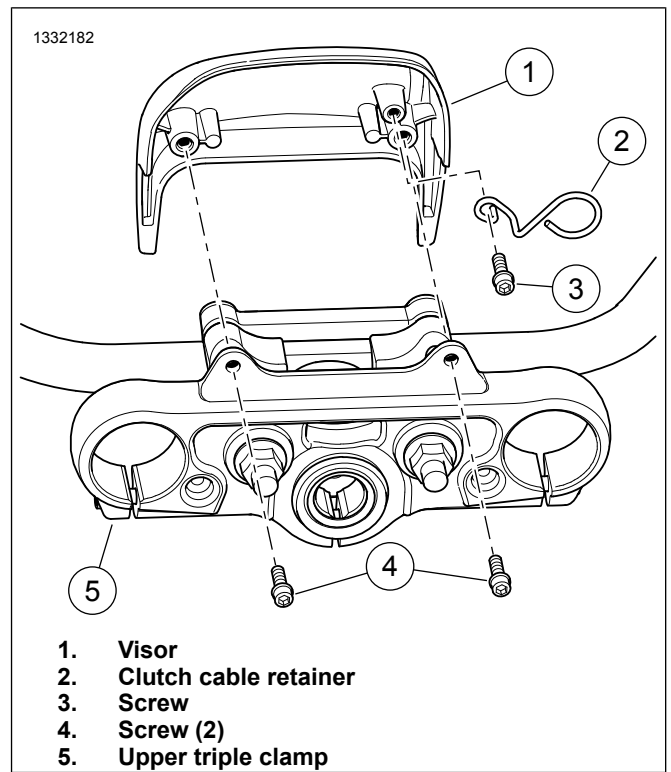


Figure 3. FXLR Visor

MODIFY

FXBB Cable Retainer

1. Figure 4 Loosen screw (2).
2. Remove OE clutch cable retainer (1).
3. Trim down clutch cable retainer.
13 mm (1/2 in)
4. Install altered OE clutch cable retainer (1) in the orientation as shown.
5. Tighten screw (2).
Torque: 4–5.5 N·m (35–49 **in-lbs**) *Clutch cable retainer screw*

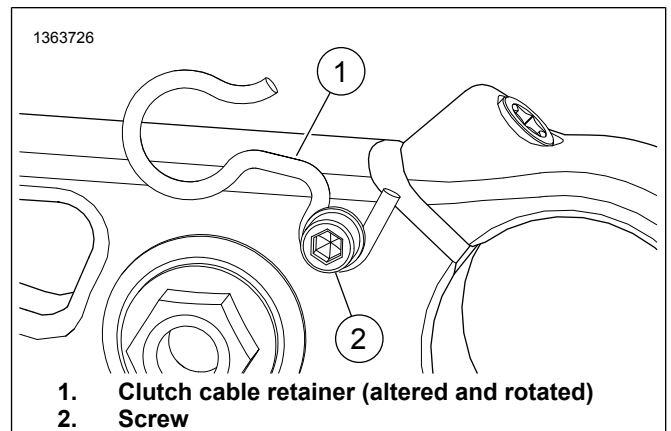


Figure 4. Altered Clutch Cable Retainer

FXLR and FXBB Turn Signals

FXBB

NOTE

The FXBB requires separate purchase parts. See *Installation Requirements*.

Do one turn signal at a time. Repeat procedure for other signal when finished.

1. Figure 5 Loosen ball stud clamp (5) completely.
2. Remove and discard ball receptacle (6 or 7).
 - a. **Left turn signal:** Remove acorn nut (9) and lock washer (8) from mirror. Retain parts.
3. Loosen jam nut (3).
4. Remove ball stud (4) from turn signal (1 or 2).
5. Remove jam nut (3) from ball stud (4).
6. Remove and discard ball stud clamp (5).
7. Install front turn signal.
 - a. Install turn signal mount bracket (11 or 12), lock washer (8) and acorn nut (9) to mirror.
 - b. Adjust mirror and tighten nut (9).
Torque: 10.8–16.3 N·m (96–144 **in-lbs**) *Mirror mounting nut*
 - c. Install ball stud (4) to turn signal (13) and tighten locknut (3).
Torque: 5.6–7.9 N·m (50–70 **in-lbs**) *Ball stud locknut*
 - d. Verify turn signal is positioned properly.

- e. Install and tighten screw lock (10).
Torque: 4–6.7 N·m (35–59 **in-lbs**) *Ball stud locknut*

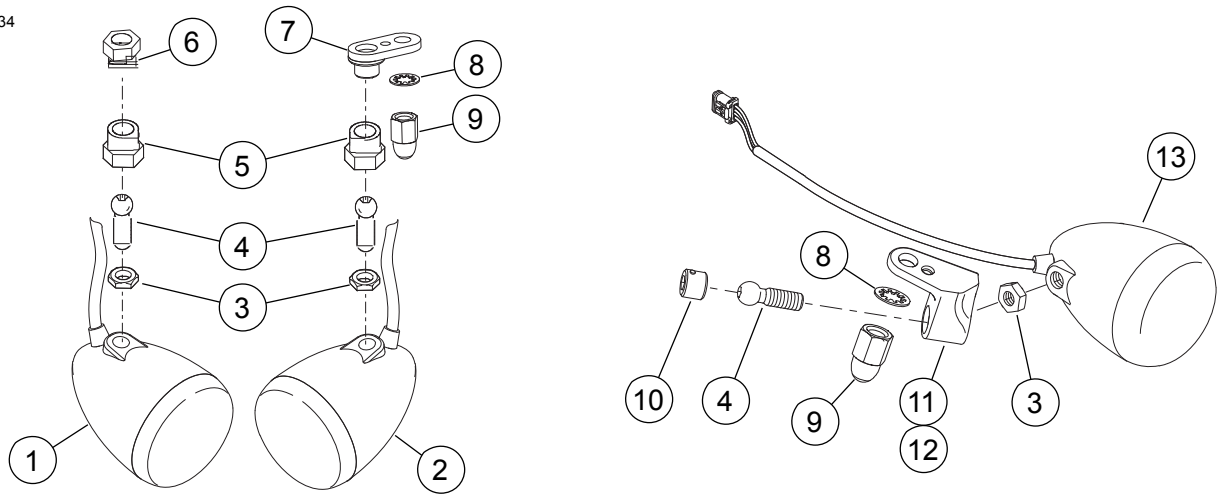
FXLR

NOTE

The FXLR with installed Tall Risers and Moto Bar kits require separate purchase parts. See *Installation Requirements*.

Do one turn signal at a time. Repeat procedure for other signal when finished.

1. Figure 5 Remove screw lock (10).
2. Loosen jam nut (3) and remove ball stud (4) from turn signal.
3. Remove and discard OE turn signal mount bracket.
 - a. Remove acorn nut (9) and lock washer (8) from mirror. Retain parts.
4. Install front turn signal.
 - a. Install turn signal mount bracket (11 or 12), lock washer (8) and acorn nut (9) to mirror.
 - b. Adjust mirror and tighten nut (9).
Torque: 10.8–16.3 N·m (96–144 **in-lbs**) *Mirror mounting nut*
 - c. Install ball stud (4) to turn signal (13) and tighten locknut (3).
Torque: 5.6–7.9 N·m (50–70 **in-lbs**) *Ball stud locknut*
 - d. Verify turn signal is positioned properly.
 - e. Install and tighten screw lock (10).
Torque: 4–6.7 N·m (35–59 **in-lbs**) *Ball stud locknut*



- | | |
|--|---|
| <ol style="list-style-type: none"> 1. FXBB Right OE turn signal 2. FXBB Left OE turn signal 3. Jam nut (2) 4. Ball stud (2) 5. Ball stud clamp (2) 6. Right ball receptacle 7. Left ball receptacle | <ol style="list-style-type: none"> 8. Internal tooth lock washer (1 OE and 1 separate purchase for FXBB only) 9. Acorn nut (1 OE and 1 separate purchase for FXBB only) 10. Screw lock (2) (separate purchase FXBB only) 11. Right hand turn signal mount bracket (separate purchase) 12. Left hand turn signal mount bracket (separate purchase) 13. FXBB or FXLR OE Turn Signal |
|--|---|

Figure 5. Turn Signal Brackets

INSTALL

Once assembled, the mounting brackets (2 and 8) along with the clamps (4 and 10) should be spaced:

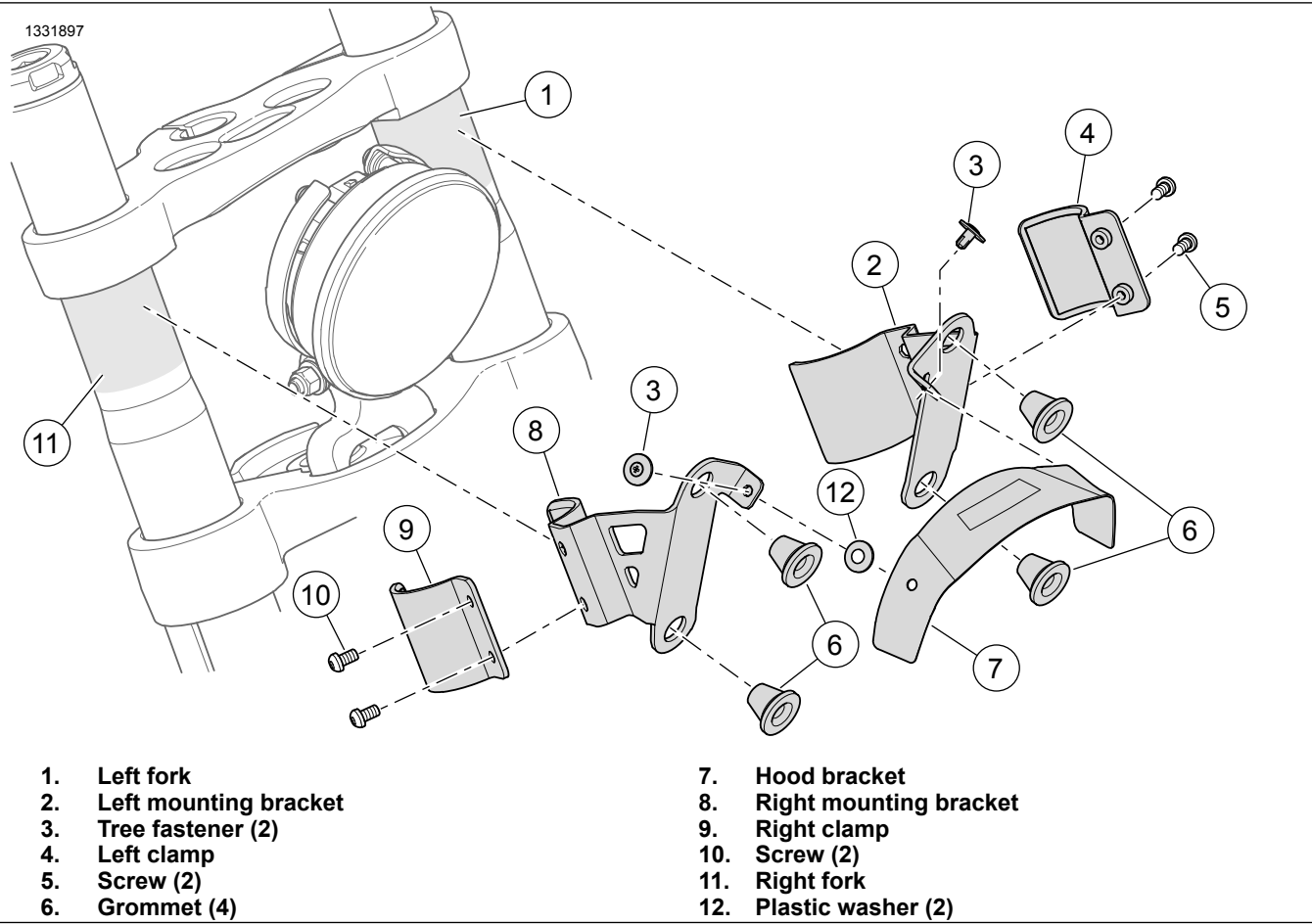
- **FXLR:** 0.6 cm (0.25 in) from the bottom of the upper triple clamp.
- **FXBB and FXLRS:** Installed against the bottom of the upper triple clamp.

1. NOTE

Using an alcohol pad eases grommet installation and removes white shipping powder.

Install grommet (6) into left and right mounting brackets (2 and 8).

2. Figure 6 Install left mounting bracket assembly.
 - a. Wipe clean the left fork (1) mounting area.
 - b. Loosely install left mounting bracket (2), clamp (4) and screws (5).
3. Install right mounting bracket assembly.
 - a. Wipe clean the right fork (11) mounting area.
4. Install hood bracket.
 - a. Adhere plastic washer (12) to each hole of hood bracket (7).
 - b. Align fastener holes in the left and right bracket (2 and 8) assemblies with hood bracket (7).
 - c. Make sure hood bracket (7) is centered on the headlamp.
 - d. Install tree fasteners (3) when all brackets are in proper alignment.
5. Install quarter fairing and check that headlamp is centered with the fairing opening.
 - a. Adjust brackets as needed.
 - b. Tighten fasteners to prevent movement.
 - c. Remove fairing.
6. Tighten screws (5 and 10).
Torque: 12.2–13.5 N·m (9–10 ft-lbs) *Clamp screw*



- 1. Left fork
- 2. Left mounting bracket
- 3. Tree fastener (2)
- 4. Left clamp
- 5. Screw (2)
- 6. Grommet (4)
- 7. Hood bracket
- 8. Right mounting bracket
- 9. Right clamp
- 10. Screw (2)
- 11. Right fork
- 12. Plastic washer (2)

Figure 6. Bracket Assembly