



INSTRUCTIONS

J01690

2006-11-15



FLSTC AND FLSTF FRONT END KIT

GENERAL

Kit Number

45331-00

Models

For model fitment information, please see the P&A Retail Catalog or the Parts and Accessories section of www.harley-davidson.com (English only).

NOTE

We recommend this kit be installed by a factory trained technician at an authorized Harley-Davidson Dealership.

⚠ WARNING

Rider and passenger safety depend upon the correct installation of this kit. If the procedure is not within your capabilities or you do not have the correct tools, have a Harley-Davidson dealer perform the installation. Improper installation of this kit could result in death or serious injury. (00308b)

NOTE

This instruction sheet references Service Manual information. A Service Manual for your model motorcycle is required for this installation and is available from a Harley-Davidson Dealer.

Kit Contents

See Figure 1 and Table 1.

INSTALLATION

Front Forks

Refer to the applicable Service Manual for Front Fork Assembly and Installation procedures.

Steering Head Bearing Adjustment

Refer to the applicable Service Manual for Steering Head Bearing Adjustment procedures.

SERVICE PARTS

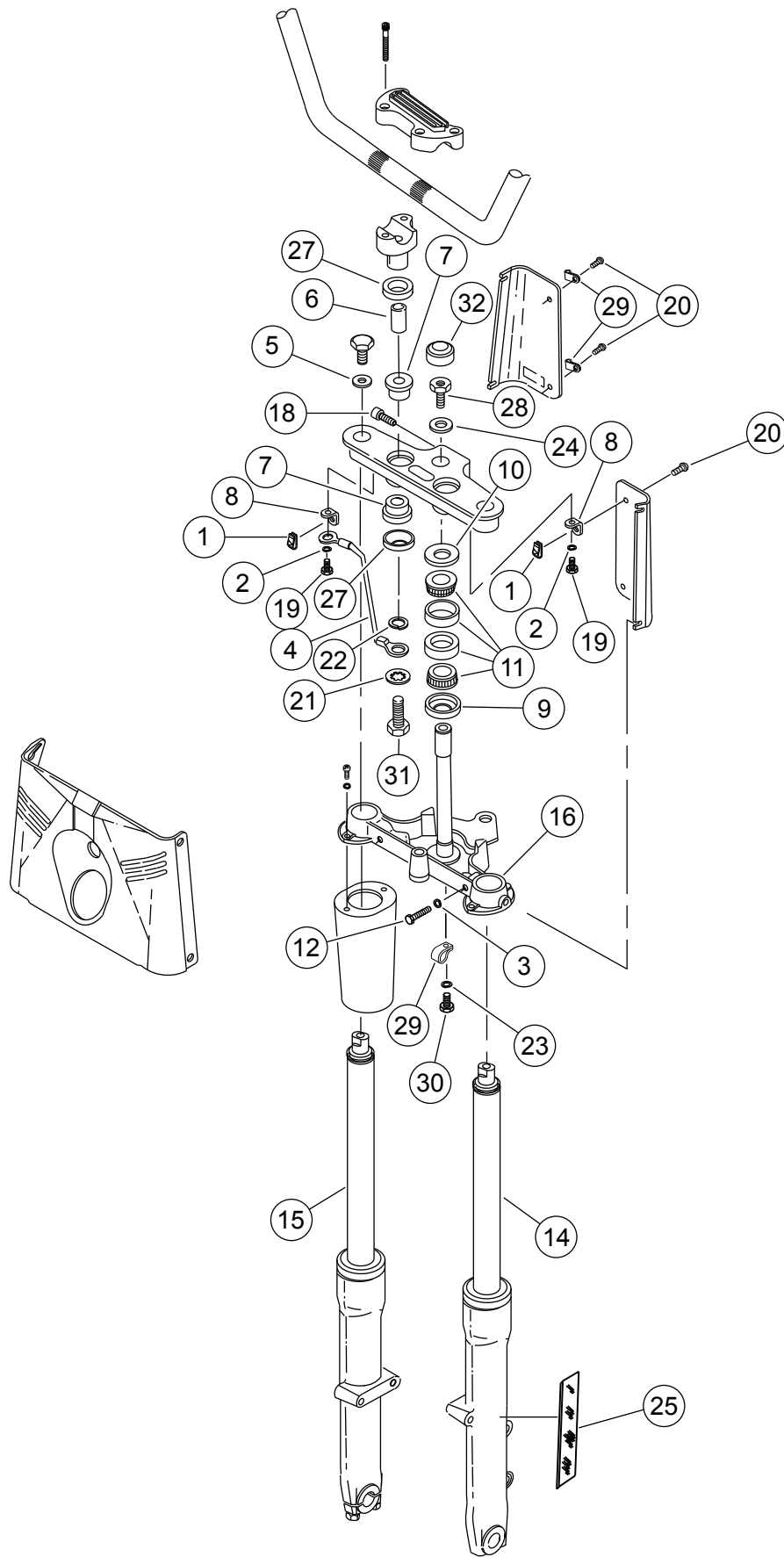


Figure 1. Service Parts: FLSTC and FLSRF Front End Kit

Table 1. Service Parts Table

Item	Description (Quantity)	Part Number	Item	Description (Quantity)	Part Number
Subassembly Part Number 46191-00			Subassembly Part Number 46200-00		
1	Nut, speed (2)	8108	20	Screw (3)	923
2	Lockwasher (2)	7041	21	Lockwasher	7129
3	Lockwasher (2)	7039	22	Lockwasher (2)	7068
4	Ground wire	70197-86	23	Washer	6703
5	Spacer (2)	5710	24	Washer, fork stem	6655
6	Spacer (2)	56153-73	25	Reflector, left side	59482-00
7	Grommet (4)	53156-86	26	Reflector, right side (not shown)	59481-00
8	"L" bracket (2)	50991-86	27	Cup washer (4)	56159-73
9	Dust cover, lower	48365-48A	28	Bolt, fork stem	4453
10	Dust cover, upper	48361-80	29	Clamp (3)	41713-86
11	Bearing w/cup (2)	48345-60	30	Screw	3594
12	Bolt (2)	4729	31	Bolt (2)	3471
13	Assembly, fork tube cover (2)	45964-86	32	Trim cap	45670-80
14	Slider, left	45916-00			
15	Slider, right	45915-00			
16	Lower triple clamp	45606-00			
17	Upper triple clamp	45456-86A			
18	Bolt, upper pinch	4350A			
19	Screw (2)	3953W			