



INSTRUCTIONS

J05724

2012-11-12



SUNDOWNER PILLION

GENERAL

Kit Number

52400066

Models

For model fitment information, see the P&A Retail Catalog or the Parts and Accessories section of www.harley-davidson.com (English only).

NOTE

This instruction sheet references service manual information. A service manual for your model motorcycle is required for this installation and is available from a Harley-Davidson Dealer.

Kit Contents

See Figure 1 and Table 1.

⚠ WARNING

Rider and passenger safety depend upon the correct installation of this kit. If the procedure is not within your capabilities or you do not have the correct tools, have a Harley-Davidson dealer perform the installation. Improper installation of this kit could result in death or serious injury. (00308b)

⚠ WARNING

Do not install these seat kits on motorcycles that are not equipped with an appropriate grab strap and passenger footpegs. If footpegs and grab strap are not installed, passenger could fall from moving motorcycle or grab onto operator, causing loss of control and death or serious injury. (00410b)

INSTALLATION

NOTE

When performing the following installation procedures, avoid scratching painted surfaces (fender, tank, etc.) with tools or metal seat tabs.

1. See Figure 1. Remove existing pillion from motorcycle by removing screw (E) at rear bracket and unhooking front pillion slots (F).
2. Remove seat and grabstrap by removing mushroom screws (D). Discard existing grabstrap and save mounting hardware from the motorcycle.
3. Install new grabstrap (2) on studs (C) using the outermost pair of holes on the strap.
4. Install solo seat (A) by sliding front tab of the seat into the square frame tube. Secure the rear mount bracket with seat grommets (B) inserted over the studs (C) and secure with the two mushroom nuts (D) and hand tighten.
5. Pull grabstrap forward and being careful not to scratch the paint on the fender, slide the pillion mount bracket (F) (at front and bottom of pillion) onto the mushroom head nuts (D).
6. Secure the rear of the pillion with stock mounting screw (E) and tighten while pushing down on rear of pillion. Pull up on the front of the pillion to check that the seat is secure.

⚠ WARNING

After installing seat, pull upward on seat to be sure it is locked in position. While riding, a loose seat can shift causing loss of control, which could result in death or serious injury. (00070b)



SERVICE PARTS

is07463

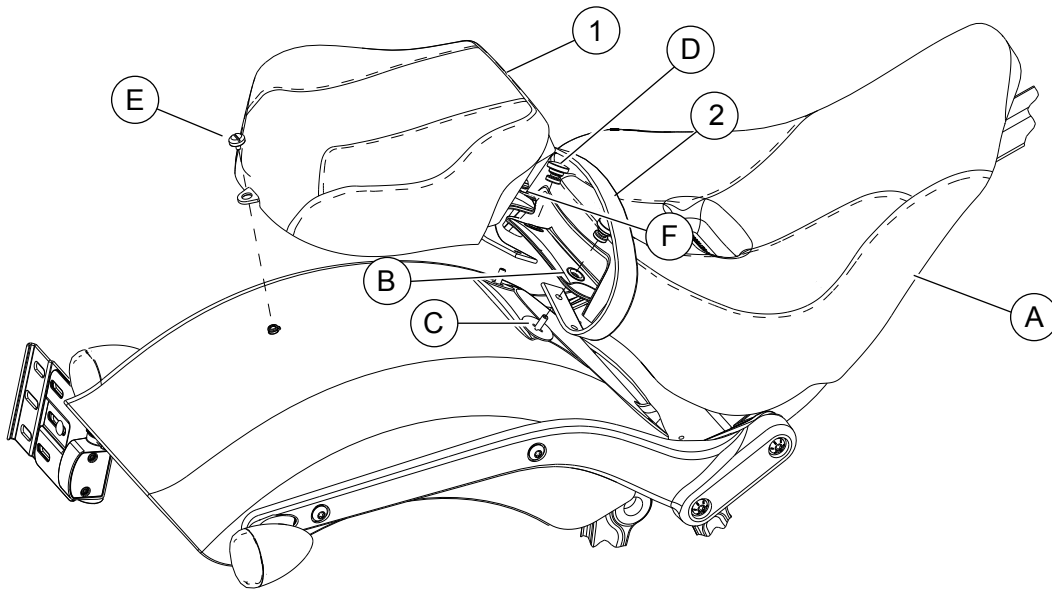


Figure 1. Service Parts: Detachable Pillion Seat

Table 1. Service Parts

Item	Description (Quantity)	Part Number
1	Pillion assembly	Not Sold Separately
2	Grapstrap, 23.5 inch	51184-00
Items mentioned in text, but not included in kit.		
A	Solo seat	52000098
B	Seat mount grommet	Not Sold Separately
C	Seat mount fender stud	Not Sold Separately
D	Mushroom seat nut	3633
E	Rear pillion tab fastener	3075
F	Front pillion slot mounts	Not Sold Separately