



# INSTRUCTIONS

94100092

2024-05-29



## ALUMINUM SIDE CASES

### GENERAL INFORMATION

Table 1. General Information

Kits	Suggested Tools	Skill Level <sup>(1)</sup>
90202082, 90202088	Safety Glasses, Torque Wrench	
<i>(1) Tightening to torque value or other moderate tools and techniques required</i>		

### KIT CONTENTS

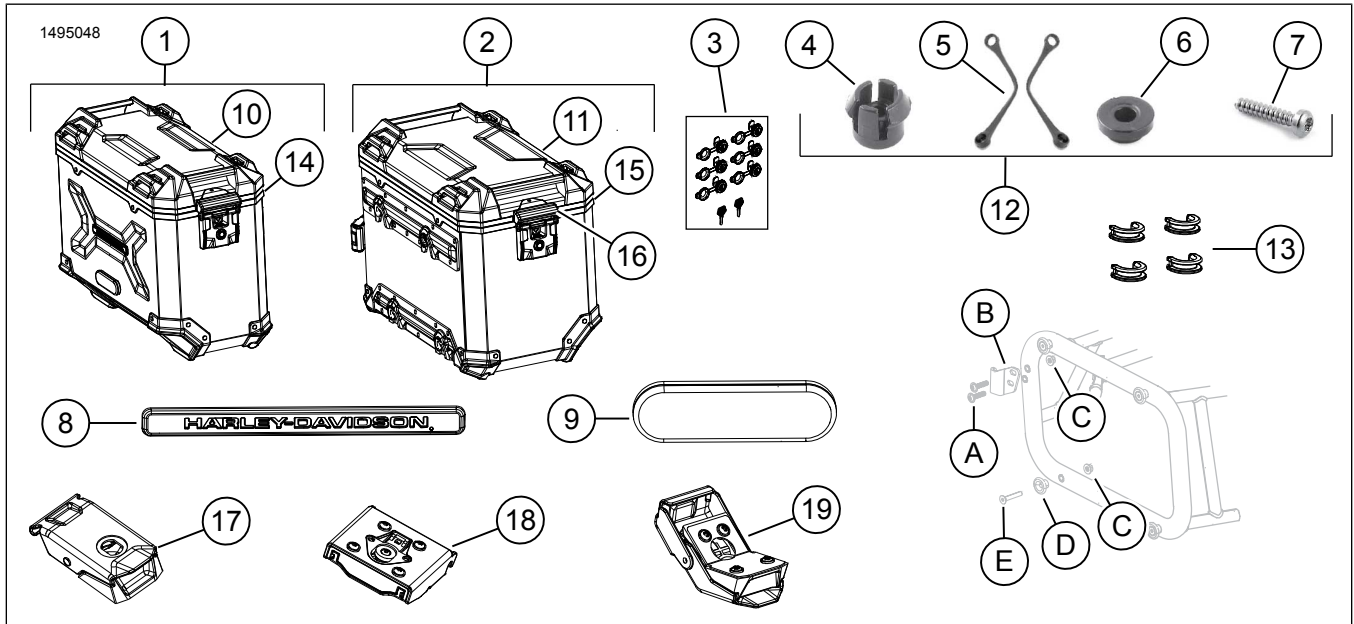


Figure 1. Kit Contents: Aluminum Side Cases

**Table 2. Kit Contents: Aluminum Side Cases**

<input checked="" type="checkbox"/>	Verify that all contents are present in the kit before installing or removing items from vehicle.				
<input type="checkbox"/>	Item	Qty	Description	Part No.	Notes
<input type="checkbox"/>	1	1	Aluminum side case (black) (right)	90202103	
			Aluminum side case (clear) (right)	90202083	
<input type="checkbox"/>	2	1	Aluminum side case (black) (left)	90202104	
			Aluminum side case (clear) (left)	90202084	
<input type="checkbox"/>	3	1	Lockset (2-keys)	90300164	
<input type="checkbox"/>	4	2	Snap-Fit	Not sold separately	
<input type="checkbox"/>	5	2	Lid limiter	Not sold separately	
<input type="checkbox"/>	6	2	Nylon bushing	Not sold separately	
<input type="checkbox"/>	7	4	Screw	Not sold separately	
<input type="checkbox"/>	8	2	Medallion	14101429	
<input type="checkbox"/>	9	2	Reflector (red)	67900205A	
<input type="checkbox"/>	10	1	Lid (clear) (right)	90202403	
			Lid (black) (right)	90202405	
<input type="checkbox"/>	11	1	Lid (clear) (left)	90202404	
			Lid (black) (left)	90202406	
<input type="checkbox"/>	12	2	Lid limiter kit (includes 4-7)	90202407	
<input type="checkbox"/>	13	4	Nylon bushing	90202340	
<input type="checkbox"/>	14	1	Gasket (right)	90202505	Service part
<input type="checkbox"/>	15	1	Gasket (left)	90202506	Service part
<input type="checkbox"/>	16	2	Hinge cover	90202786	Service part
<input type="checkbox"/>	17	2	Lid latch	90202789	Service part
<input type="checkbox"/>	18	2	Lower hinge	90202790	Service part
<input type="checkbox"/>	19	2	Latch	90202791	Service part
Items mentioned in text, but not included in kit.					
<input checked="" type="checkbox"/>	A	1	Flange button head screw		9.5 N·m (7 ft-lbs)
<input checked="" type="checkbox"/>	B	1	Latch bracket		
<input checked="" type="checkbox"/>	C	1	Locknut		
<input checked="" type="checkbox"/>	D	1	Docking point		
<input checked="" type="checkbox"/>	E	1	Flat head screw		9.5 N·m (7 ft-lbs)

**GENERAL**

Instruction sheet is also available electronically. To verify you are using the most current version available, do one of the following:

- Go to [h-d.com/isheets](http://h-d.com/isheets)
- Scan QR code in upper left corner of the instruction sheet

**NOTE**

*This instruction sheet **may have a Supplemental Video** to assist installer in clarifying a certain part of the assembly. A linked video would be located at the end of this instruction sheet.*

**Models**

For model fitment information, see the Parts and Accessories (P&A) Retail Catalog or the Parts and Accessories section of [www.harley-davidson.com](http://www.harley-davidson.com).

## Installation Requirements

### ⚠ WARNING

Rider and passenger safety depend upon the correct installation of this kit. If the procedure is not within your capabilities or you do not have the correct tools, have a Harley-Davidson dealer perform the installation. Improper installation of this kit could result in death or serious injury. (00308b)

### ⚠ WARNING

See **ACCESSORIES AND CARGO** section within the **SAFETY FIRST** section in your owner's manual. Improper cargo loading or accessory installation can cause component failure and adversely affect stability, handling and performance, which could result in death or serious injury. (00021c)

- Do not exceed 22 lbs (10 kg) total weight contents and attachments per bag.
- Periodically recheck load.

### ⚠ WARNING

Do not exceed the motorcycle's Gross Vehicle Weight Rating (GVWR) or Gross Axle Weight Rating (GAWR). Exceeding these weight ratings can lead to component failure and adversely affect stability, handling and performance, which could result in death or serious injury. (00016f)

Separate purchase of Side Mounting Kit (Part No. 94100093) is required for installation.

## OPEN LID

### NOTE

For lubrication *ONLY* use graphite powder!

### NOTE

Pay attention to correct alignment of clamping plates.

1. Figure 2 Pull latch (1) of lid (3) upwards.
2. Remove it from latch bar (2).
3. Open lid (3).

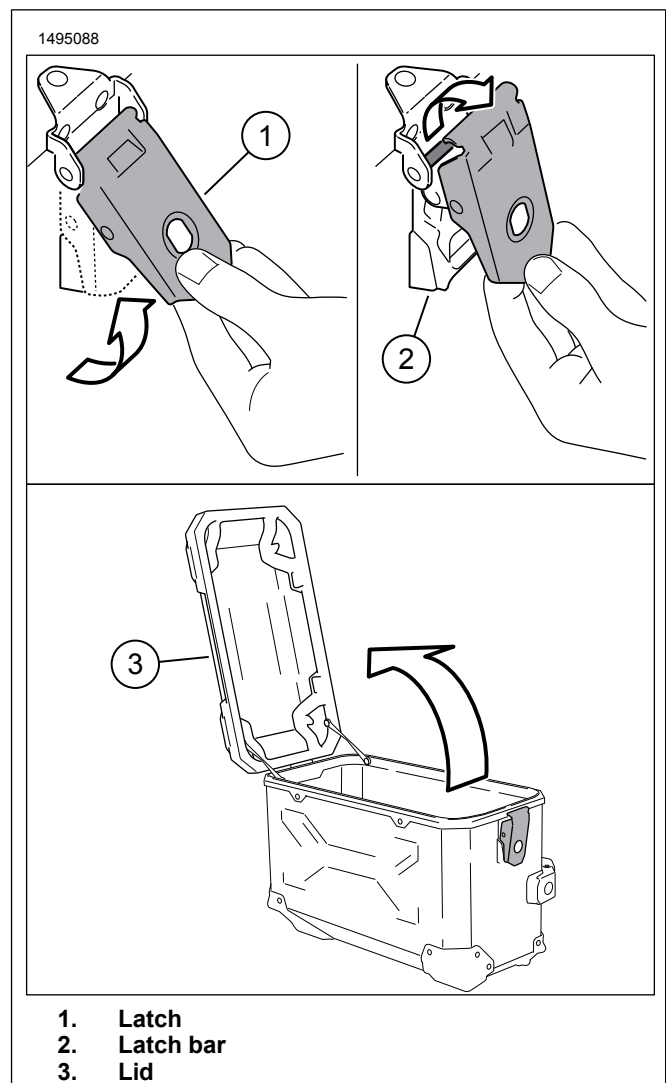


Figure 2. Opening Lid

## INSERTION OF LOCK CYLINDER SET

### NOTE

- For lubrication *ONLY* use graphite powder!
- Pay attention to correct alignment of clamping plates.
- Figure 3 Make sure lock cylinder tab points towards latch.

1. Figure 3 Insert lock cylinders (1) into latches (2).
2. Secure lock cylinders with clamping plates (3).
3. Insert keys (4) into lock cylinders.
4. Open or close lock cylinder.

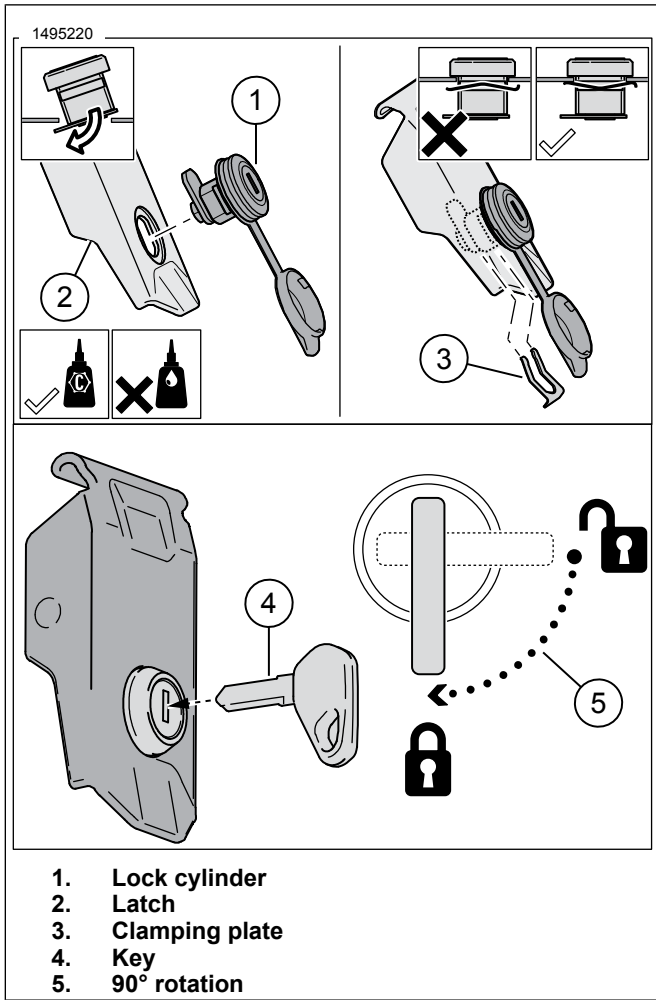


Figure 3. Lock Cylinder Insertion

## MOUNTING LID LIMITERS

### NOTE

Pay attention to left-right specifications for limiters (in driving direction).

1. Figure 4 Open lid. Attach snap-fit (2) at lid frame. Tighten screws (1), hand tighten, fully seated.  
Torque: 0.5 N·m (4 in-lbs)
2. Attach lid limiters (3) at case frame. Tighten screws, hand tighten, fully seated. Press lid limiters onto snap-fits.  
Torque: 0.5 N·m (4 in-lbs)
3. Before closing lid for first time, lid limiters must be compressed. While closing lid, make sure that lid limiters are not pinched between lid and case.
4. To remove lid from case, remove lid limiters from snap-fits first.

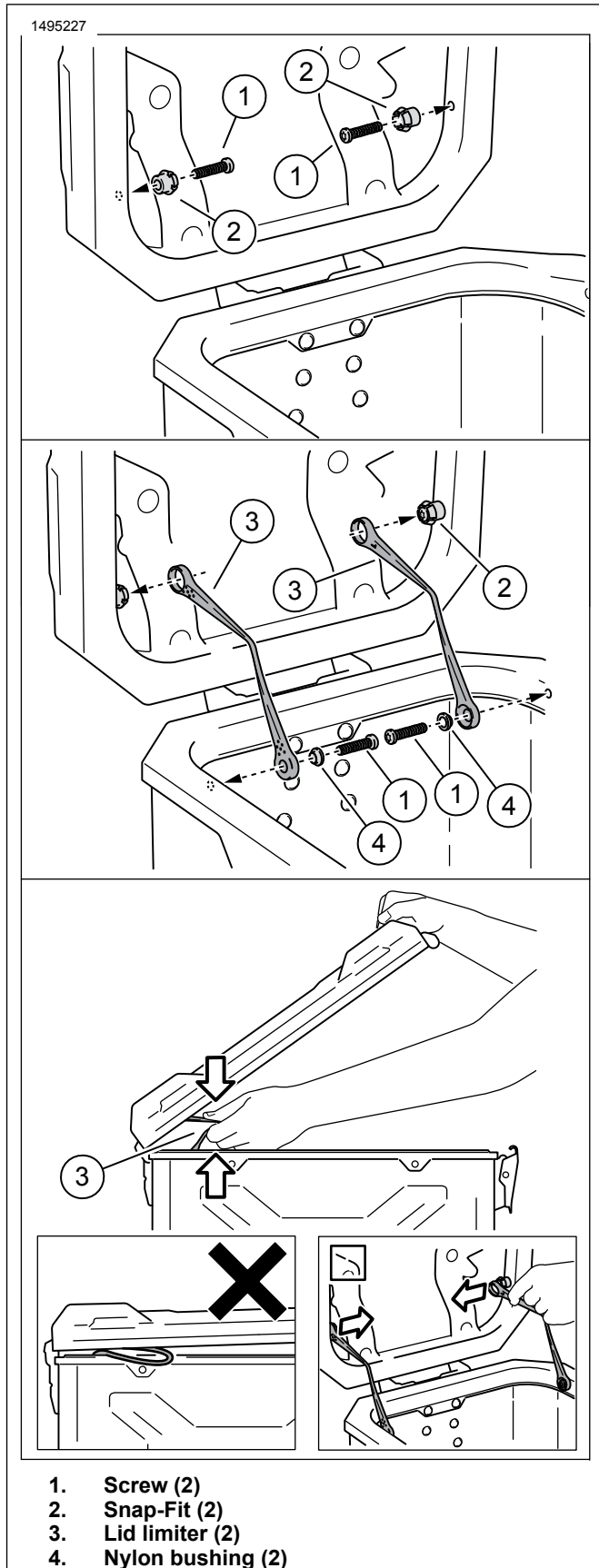


Figure 4. Lid Limiter Mounting

## REMOVING LID

### NOTE

Figure 4 If lid limiters have been installed, they must be detached before removing lid.

1. Figure 5 Press quick release fastener down until it clicks into place and button pops out.
2. Remove lid from case.
3. Press button of quick release fastener to lock replaced lid in place. Make sure that quick release fastener snaps above.

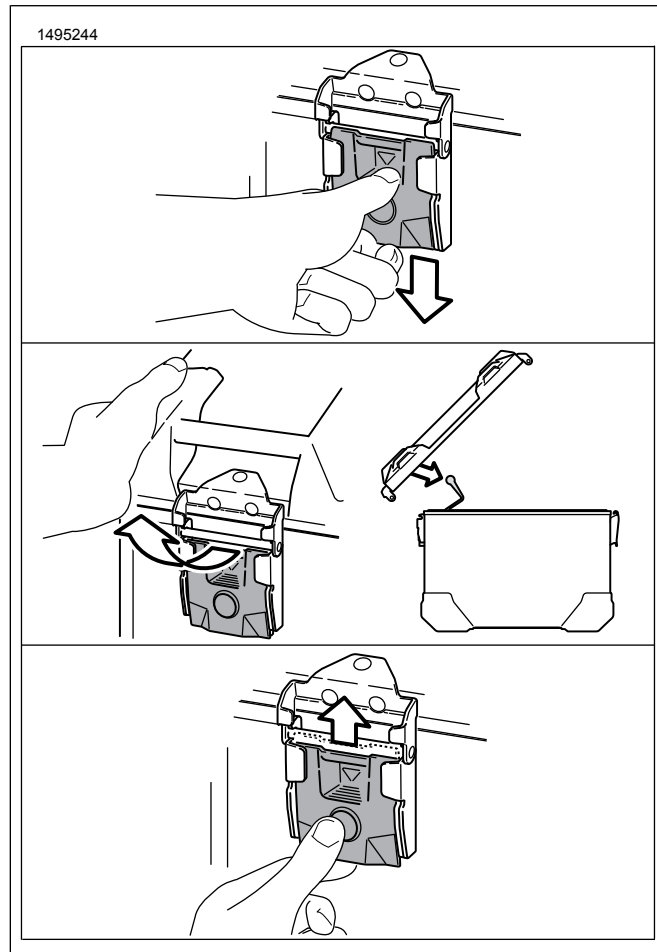


Figure 5. Lid Removal

## INSTALL

### NOTE

Make sure that all four docking points (3) rest on at same time.

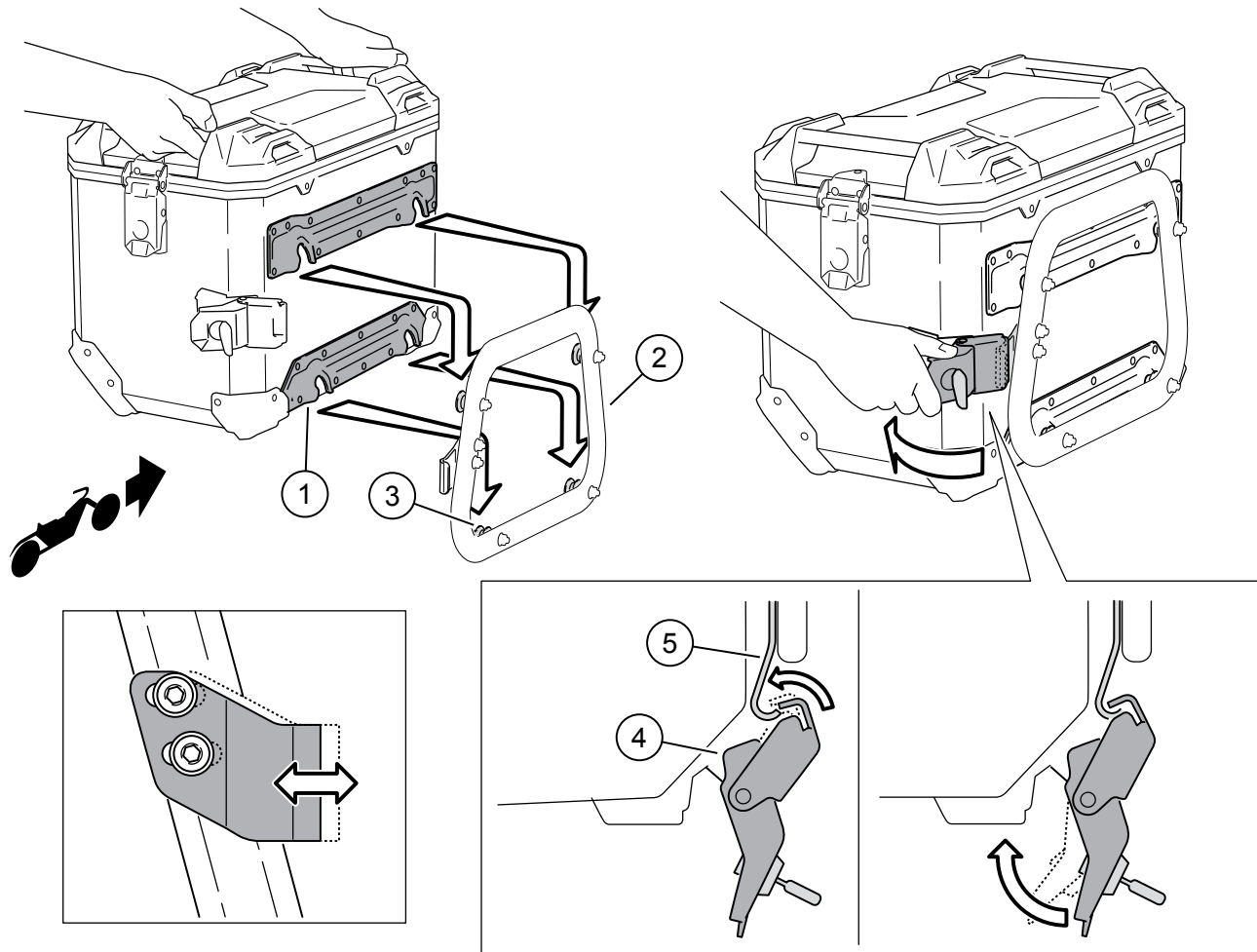
### NOTE

Make sure closed latch is under sufficient tension! If not latch hook must be readjusted!

### NOTE

Secure aluminum case with separately available lock cylinder set at side case carrier before riding!

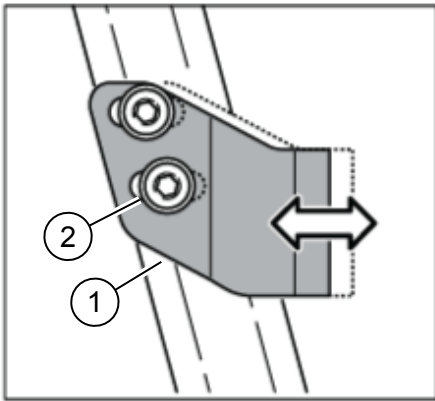
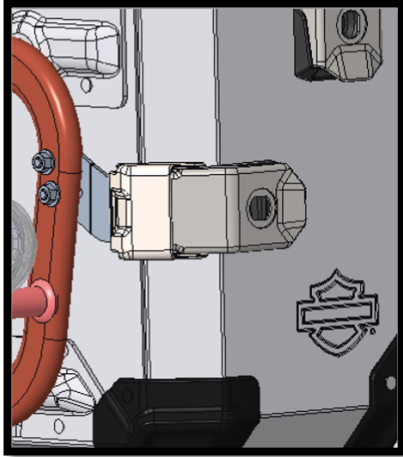
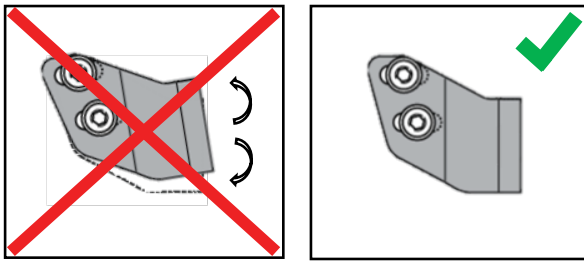
1. Figure 6 Install four openings of the mounting rails (1) onto docking point (3) of the mounting side case carrier (2). Press aluminum case slightly downward, until it properly rests on mounting side case carrier (2).
2. Place latch (4) over latch hook (5).
3. Close latch (4) and check proper fit of aluminum case on mounting side case carrier (2).
4. Figure 7 Make sure side cases are installed properly. Verify components are parallel to each other. If out of alignment adjust as needed.



- 1. Mounting rail
- 2. Side case carrier
- 3. Docking point

- 4. Latch
- 5. Latch hook

Figure 6. Installation of Aluminum Cases

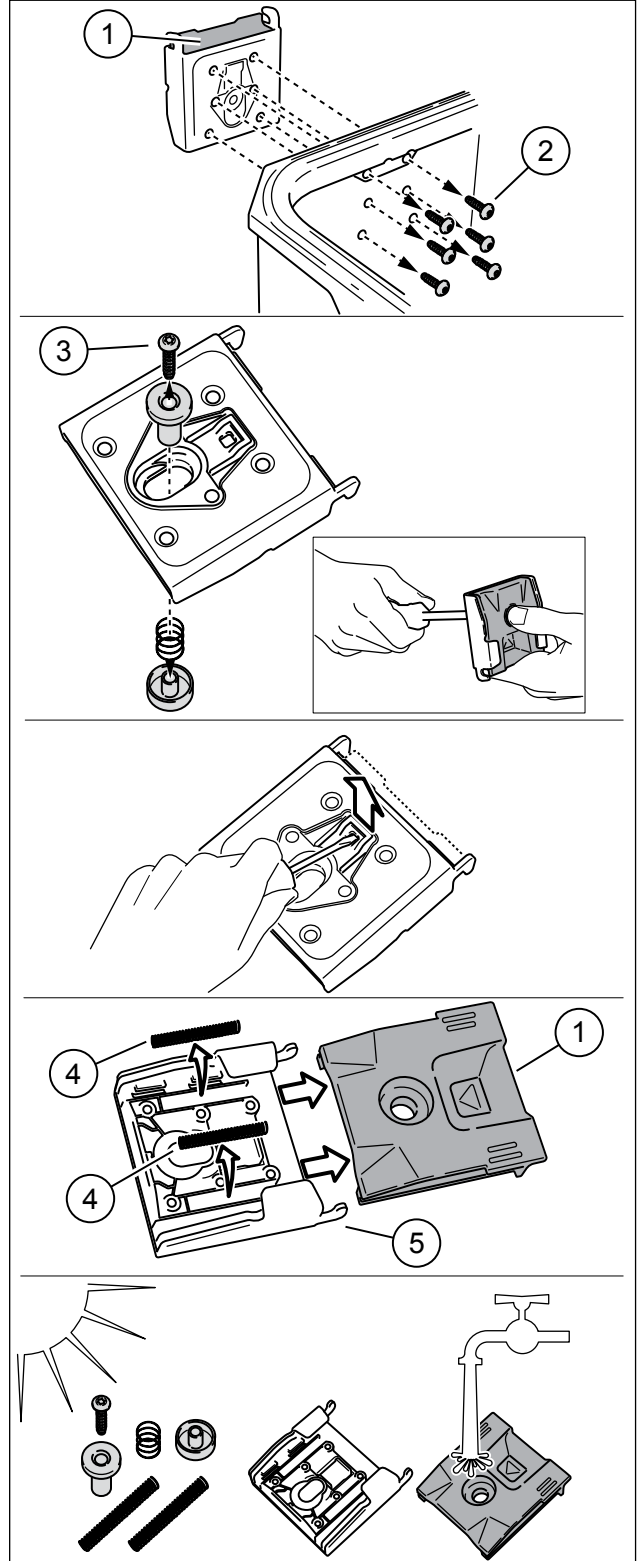


1. Latch bracket
2. Flange button head screw

Figure 7. Proper Alignment

## MAINTENANCE

1. Figure 8 Loosen six screws (2) on inner side of case and remove quick release fastener (1).
2. Loosen screw (3).
3. Loosen clip carefully.
4. Remove quick release fastener (1) and springs (4) from mounting plate (5).
5. Clean components with clean water and let air dry.
6. Install part in reverse order.



1. Quick release fastener
2. Screws (6)
3. Screw
4. Springs
5. Mounting plate

Figure 8. Maintenance