



INSTRUCTIONS

J05756

2018-01-16



WINDSHIELD TRIM

GENERAL

Kit Number

61400224, 61300358, 61400593

Models

For model fitment information, see the P&A Retail Catalog or the Parts and Accessories section of www.harley-davidson.com (English only).

⚠ WARNING

Rider and passenger safety depend upon the correct installation of this kit. If the procedure is not within your capabilities or you do not have the correct tools, have a Harley-Davidson dealer perform the installation. Improper installation of this kit could result in death or serious injury. (00308b)

Kit Contents

See Figure 1 and Table 1.

INSTALLATION

1. See Figure 1. Remove three original equipment (OE) screws and washers. Discard.
2. Install windshield trim (6), washer (2) and center screw (5). Do not tighten at this time.
3. Center the windshield trim on the fairing and install end screws (1) and washers (2).

4. NOTE

Do not over-tighten screws.

Tighten center screw.

Torque: 2.8–3.4 N·m (25–30 in-lbs) center screw

5. Tighten end screws.

Torque: 2.8–3.4 N·m (25–30 in-lbs) center screw

SERVICE PARTS

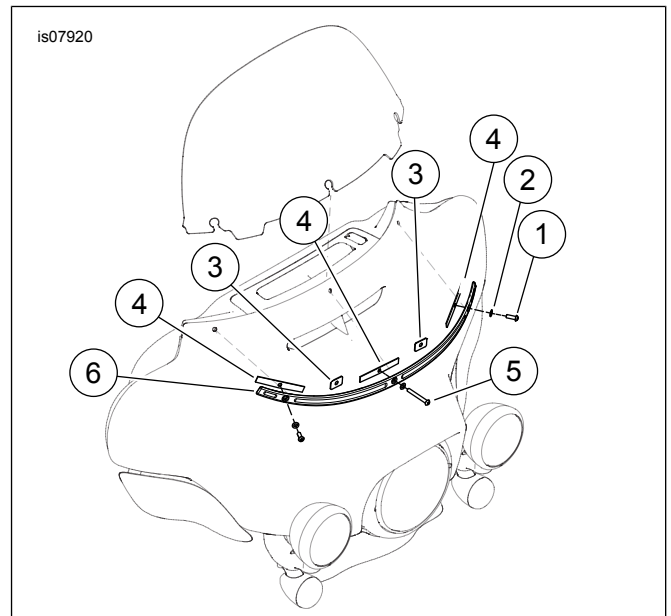


Figure 1. Windshield Trim

Table 1. Service Parts Table

Item	Description (Quantity)	Part Number
1	Screw, Stainless (2)	4976
	Screw, Black (2)	10200679
2	Washer, Stainless (3)	6383
	Washer, Black (3)	10300156
3	Pad (2)	6549
4	Pad (3)	10300036
5	Screw, Stainless	10500034
	Screw, Black	10200678
6	Windshield trim	Not Sold Separately