



INSTRUCTIONS

J02577

2016-08-22



BRAKE PEDAL PAD KIT

GENERAL

Kit Number

42841-03, 50600165, 50600232

Models

For model fitment information, see the P&A retail catalog or the Parts and Accessories section of www.harley-davidson.com (English only).

⚠ WARNING

Rider and passenger safety depend upon the correct installation of this kit. If the procedure is not within your capabilities or you do not have the correct tools, have a Harley-Davidson dealer perform the installation. Improper installation of this kit could result in death or serious injury. (00308b)

Kit Contents

See Figure 1 and Table 1.

INSTALLATION

NOTE

A Service Manual for your motorcycle is available at your Harley-Davidson dealer.

1. Remove the previously installed brake pedal cover from the foot brake lever. Discard pedal cover.

NOTE

Brake Pedal will be fastened to cover with three screws.

2. See Figure 1. Align the assembly over the foot brake pedal and insert the threaded stud through the hole in the pedal.
3. Obtain the washer (3) and locknut (2) from the kit and secure the pedal pad assembly to the foot brake pedal.
4. Tighten the locknut to 33 **in-lbs** (2.5 Nm).

Service Parts

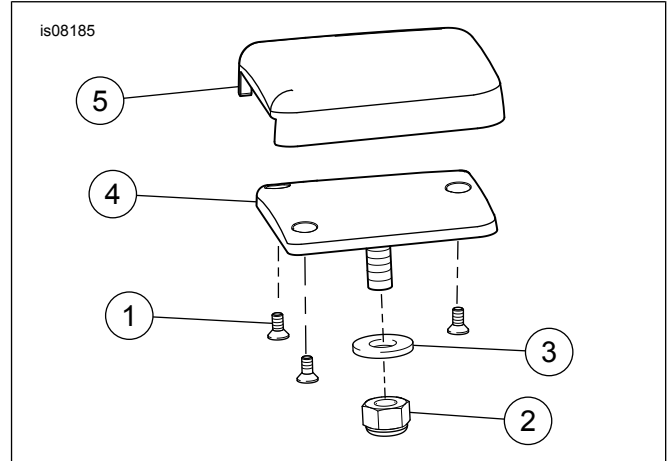


Figure 1. Service Parts

Table 1. Service Parts

Item	Description (Quantity)	Part Number
1	Screw, 4-40x1/4 inch (3)	4277
2	Locknut	7686
3	Washer	6703
4	Tread, brake pedal pad (Kit 42841-03)	42843-03
	Tread, brake pedal pad (Kit 50600165)	Not Sold Separately
5	Cover, brake pedal pad (Kit 42841-03)	Not Sold Separately
	Cover, brake pedal pad (Kit 50600165)	Not Sold Separately
	Brake pedal assy (Kit 50600232)	Not Sold Separately

