



# INSTRUCTIONS

J06530

2018-01-16



## RIGID MOUNT Sissy BAR UPRIGHT

### GENERAL

#### Kit Numbers

52300502, 52300503

#### Models

For model fitment information, see the P&A retail catalog or the Parts and Accessories section of [www.harley-davidson.com](http://www.harley-davidson.com) (English only).

#### Installation Requirements

##### ⚠ WARNING

Rider and passenger safety depend upon the correct installation of this kit. If the procedure is not within your capabilities or you do not have the correct tools, have a Harley-Davidson dealer perform the installation. Improper installation of this kit could result in death or serious injury. (00308b)

#### Kit Contents

See Figure 2 and Table 1 and Table 2.

### PREPARE

1. If vehicle equipped with rigid or detachable saddlebags.
  - a. Remove screws and saddlebags.
  - b. Remove docking points.

#### 2. *NOTE*

*Washers should be centered on inside of the four holes.*

See Figure 2. Install narrow washers (4) to backrest assembly (3).

- a. Clean surface with a mixture of 50 percent isopropyl alcohol and 50 percent distilled water.
- b. Remove adhesive backing.
- c. Install and press firmly to adhere.

### REMOVAL

1. See Figure 1. Remove OEM reflector (1) from each side of fender strut.
  - a. Saw behind reflectors with mono-filament fishing line or waxed dental floss.

- b. Use 3M GENERAL PURPOSE ADHESIVE REMOVER to remove remaining foam backing tape and adhesive from mounting surface.
- c. Clean surface with a mixture of 50 percent isopropyl alcohol and 50 percent distilled water.

2. Remove screws (4) from fender (2, 3).

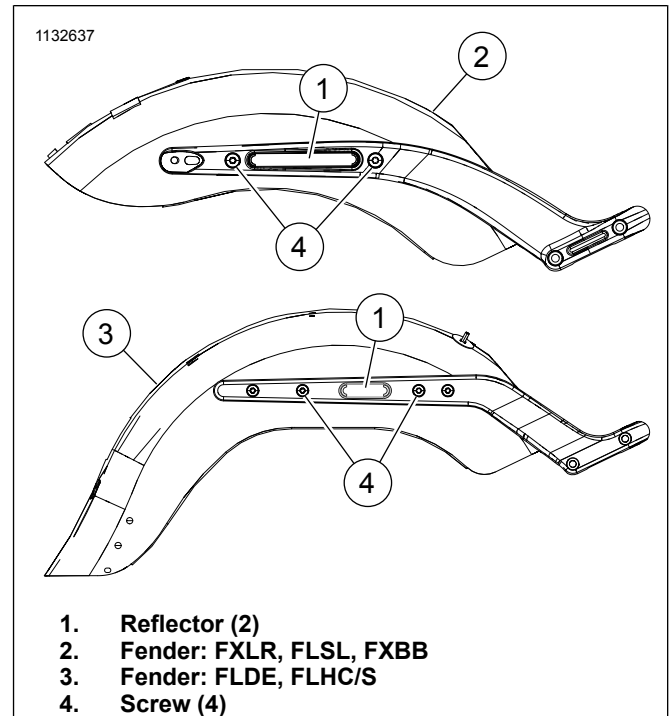


Figure 1. Fender Strut Screw

### INSTALLATION

#### Without Saddlebags

##### *NOTE*

*Make sure narrow washers (4) are installed prior to installation. See Prepare section.*

1. See Figure 2. Install backrest assembly (3).
2. Install screws (5) from kit. Tighten.
 

Torque: 28–37 N·m (21–27 ft-lbs)

  - a. Wait a minimum of sixty seconds for the adhesive to compress and re-tighten screws (5).



3. Install reflectors (7) over decorative holes in sideplate.
  - a. Clean surface with a mixture of 50 percent isopropyl alcohol and 50 percent distilled water.
  - b. Remove adhesive backing.
  - c. Install and press firmly to adhere.

## With Saddlebags

### NOTE

*Make sure narrow washers (4) are installed prior to installation. See Prepare section.*

1. 

### NOTE

*Washers should be centered on outside of the four holes.*

See Figure 2. Install wide washers (6) to backrest assembly (3).
- a. Clean surface with a mixture of 50 percent isopropyl alcohol and 50 percent distilled water.
  - b. Remove adhesive backing.

- c. Install and press firmly to adhere.
2. Install backrest assembly (3).
3. Install reflectors (7) over decorative holes in sideplate.
  - a. Clean surface with a mixture of 50 percent isopropyl alcohol and 50 percent distilled water.
  - b. Remove adhesive backing.
  - c. Install and press firmly to adhere.
4. Apply threadlocker. Install screws (5) originally removed from saddlebag or docking points.

Consumable: LOCTITE 243 MEDIUM STRENGTH THREADLOCKER AND SEALANT (BLUE) (99642-97)
5. Tighten screws (5).

Torque: 28–37 N·m (21–27 ft-lbs)

  - a. Wait a minimum of sixty seconds for the adhesive to compress and re-tighten screws (5).

# SERVICE PARTS

1132381

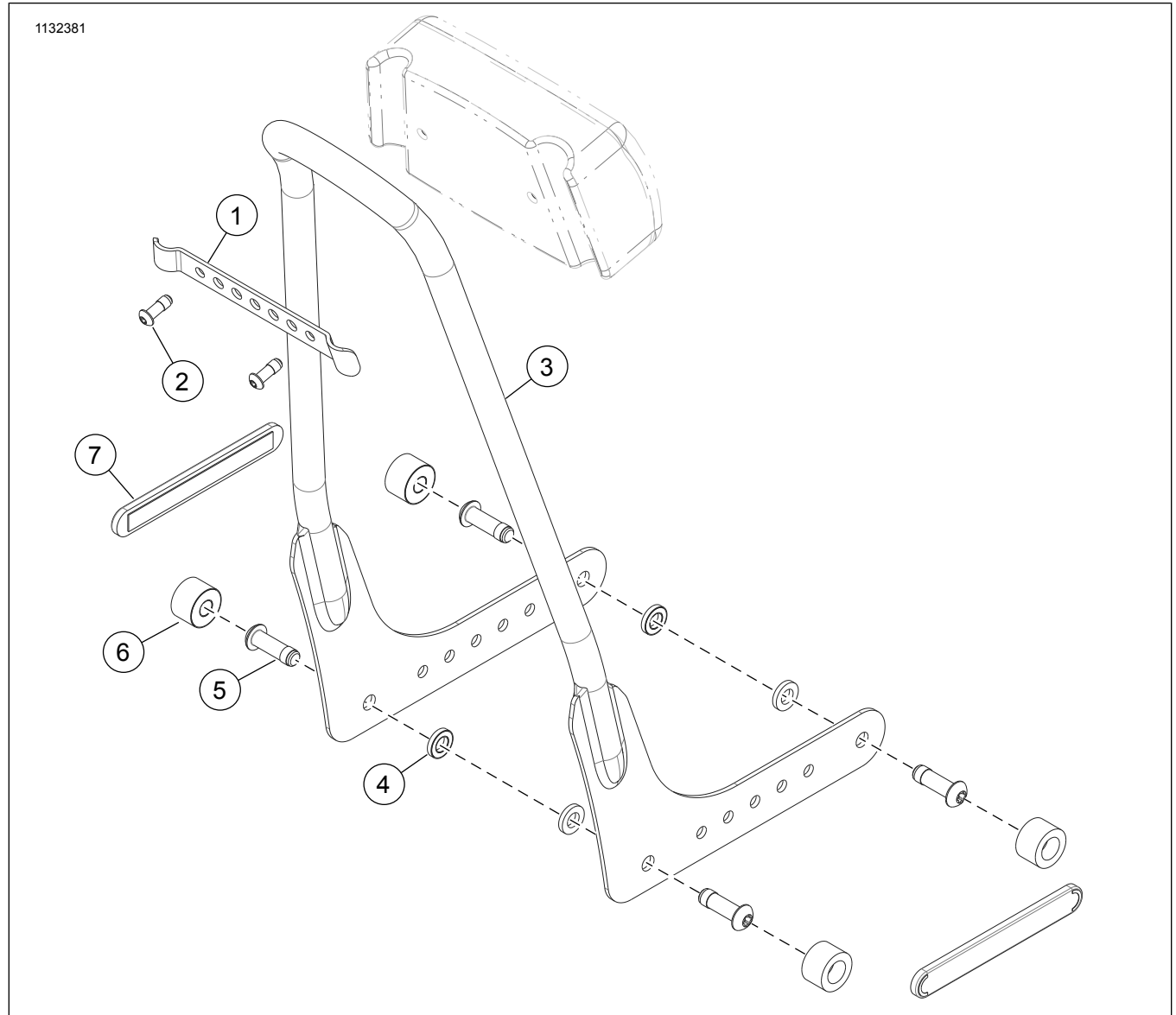


Figure 2.

Table 1. Service Parts 52300502 Black Backrest

Item	Description (Quantity)	Part Number
1	Backrest support	52300520
2	Screw, Button head Torx™ (2)	10200635
3	Backrest assembly	Not sold separately
4	Narrow spacer, adhesive backed (4)	Not sold separately
5	Screw, 3/8-16 Button head Torx™ (4)	10200601
6	Wide spacer, adhesive backed (4)	Not sold separately
7	Reflector (2)	69490-07

Table 2. Service Parts 52300503 Chrome Backrest

Item	Description (Quantity)	Part Number
1	Backrest support	52300521
2	Screw, Button head Torx™ (2)	10200636
3	Backrest assembly	Not sold separately
4	Narrow spacer, adhesive backed (4)	Not sold separately
5	Screw, 3/8-16 Button head Torx™ (4)	10200602
6	Wide spacer, adhesive backed (4)	Not sold separately
7	Reflector (2)	69490-07