



# INSTRUCTIONS

J02837

2025-01-30



## ANGLED HIGHWAY PEG MOUNTING KITS

### GENERAL INFORMATION

Table 1. General Information

Kits	Suggested Tools	Skill Level <sup>(1)</sup>
50829-07A, 50830-07A, 50500167, 50500168	Safety glasses, Torque wrench, Loctite 243 (Blue)	
<i>(1) Tightening to torque value or other moderate tools and techniques required</i>		

### KIT CONTENTS

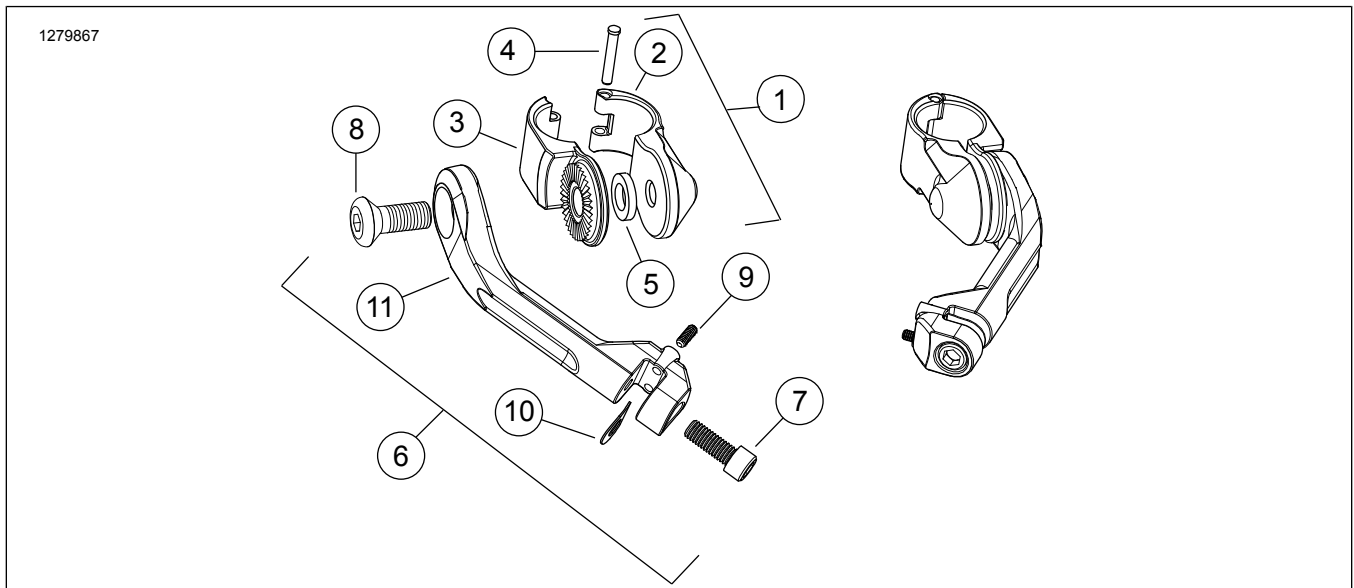


Figure 1. Kit Contents: Engine Guard Footpeg Mounting Kit

**Table 2. Kit Contents: Rider Footpegs Kit**

<input checked="" type="checkbox"/> Verify that all contents are present in the kit before installing or removing items from vehicle.					
<input type="checkbox"/>	Item	Qty	Description	Part No.	Notes
<input type="checkbox"/>	1	2	Assembly, mounting clamp (includes items 2-5)	50833-07	Kits: 50829-07A, 50830-07A
<input type="checkbox"/>				50500173	Kits: 50500167, 50500168
<input type="checkbox"/>	2	2	Clamp, mounting (female)	Not sold separately	
<input type="checkbox"/>	3	2	Clamp, mounting (male)	Not sold separately	
<input type="checkbox"/>	4	2	Pin, hinge	Not sold separately	
<input type="checkbox"/>	5	2	Washer, 9/16 in	6459	
<input type="checkbox"/>	6	2	Assembly, peg extension, long (includes items 7-11)	50918-03A	Kit: 50829-07A
<input type="checkbox"/>				50500171	Kit: 50500167
<input type="checkbox"/>		2	Assembly, peg extension, short (includes items 7-11)	50927-03A	Kit: 50830-07A
<input type="checkbox"/>				50500172	Kit: 50500168
<input type="checkbox"/>	7	2	Screw	10200917	Kits: 50829-07A, 50830-07A
<input type="checkbox"/>				10200100	Kits: 50500167, 50500168
<input type="checkbox"/>	8	2	Screw	Not sold separately	
<input type="checkbox"/>	9	2	Set screw, 10-24	3338	
<input type="checkbox"/>	10	2	D-spring washer, 3/8 in	50912-72	
<input type="checkbox"/>	11	2	Arm, angled, long	Not sold separately	

**GENERAL**

Instruction sheet is also available electronically. To verify you are using the most current version available, do one of the following:

- Go to [h-d.com/isheets](http://h-d.com/isheets)
- Scan QR code in upper left corner of the instruction sheet

*NOTE*

*This instruction sheet may have a Supplemental Video to assist installer in clarifying a certain part of the assembly. A linked video would be located at the end of this instruction sheet.*

**Models**

For model fitment information, see the Parts and Accessories (P&A) Retail Catalog or the Parts and Accessories section of [www.harley-davidson.com](http://www.harley-davidson.com).

Contact Harley-Davidson Customer Support Center at 1-800-258-2464 (U.S. only) or 1-414-343-4056.

**Installation Requirements**

This kit requires installing a set of male-mount style footpegs.

**▲ WARNING**

**Rider and passenger safety depend upon the correct installation of this kit. If the procedure is not within your capabilities or you do not have the correct tools, have a Harley-Davidson dealer perform the installation. Improper installation of this kit could result in death or serious injury. (00308b)**

**INSTALL**

**▲ WARNING**

**Position footpegs so rider can operate foot controls without interference. Failure to have full access to foot controls can cause loss of control, which could result in death or serious injury. (00313a)**

**▲ WARNING**

**Mount the footpegs so they will not strike the ground during cornering. Footpegs striking the ground during cornering can cause loss of control, resulting in death or serious injury. (00458c)**

1. Determine desired footpeg mounting height on engine guard. Mark location, if desired.

2. See Figure 1. Position mounting clamps from mounting clamp assembly (1) around engine guard at desired height.
  - a. Install with hinge pin head facing upward and "cogged" face of clamp facing angled arm.
3. Using screw (8), install angled arm with washer (5) positioned between clamp "ears".
4. Position angled arm to allow footpeg to pivot upward and toward rear of motorcycle. Finger tighten.
5. Install D-spring washer (10) inside angled arm with straight edge of "D" toward inside of mount.
  - a. Hold washer in place and slide footpeg (sold separately) into position.
  - b. Apply two or three drops of threadlocker to threads of screw.
 

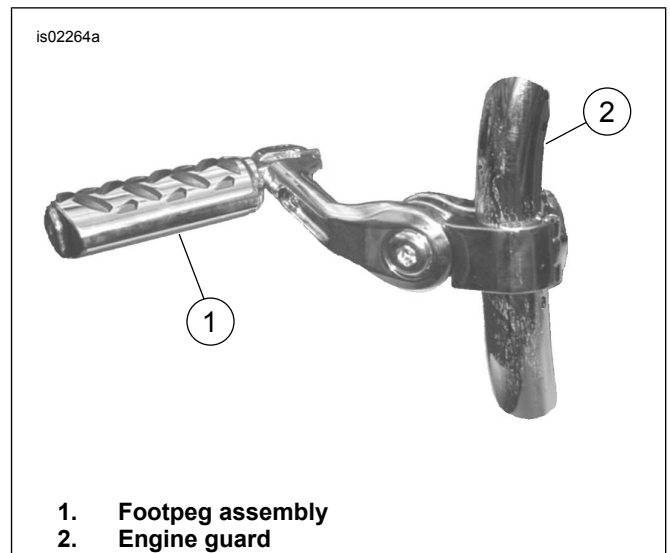
LOCTITE 243 MEDIUM STRENGTH  
THREADLOCKER AND SEALANT (BLUE)  
(99642-97)
  - c. Install screw to footpeg. Tighen.
 

Torque: 26 N·m (19 ft-lbs) *TORX head screw*
6. Install set screw (9) to lower hole on back of angled arm clevis area.
  - a. Adjust footpeg angle by changing depth of set screw.
  - b. Repeat steps 1 through 5 for opposite side.

**▲ WARNING**

**If footpeg mounting location increases motorcycle width, maintain clearance between motorcycle and surrounding persons or objects. Failure to maintain clearance could result in death or serious injury. (00314a)**

7. Position footpeg assemblies symmetrically.
  - a. Securely tighten each assembly until it cannot be rotated on the engine guard with reasonable foot pressure.
  - b. Do not exceed 55-60 ft-lbs (75-81 Nm) on screw (8).



**Figure 2. Installed Footpeg Assembly to Engine Guard**