



INSTRUCTIONS

94100164

2025-02-18



MID CONTROLS

GENERAL INFORMATION

Table 1. General Information

Kits	Suggested Tools	Skill Level ⁽¹⁾
50502136	Safety Glasses, Torque Wrench, Digital Technician II (DT II)	
<i>(1) DTII and dealer installation required</i>		

KIT CONTENTS

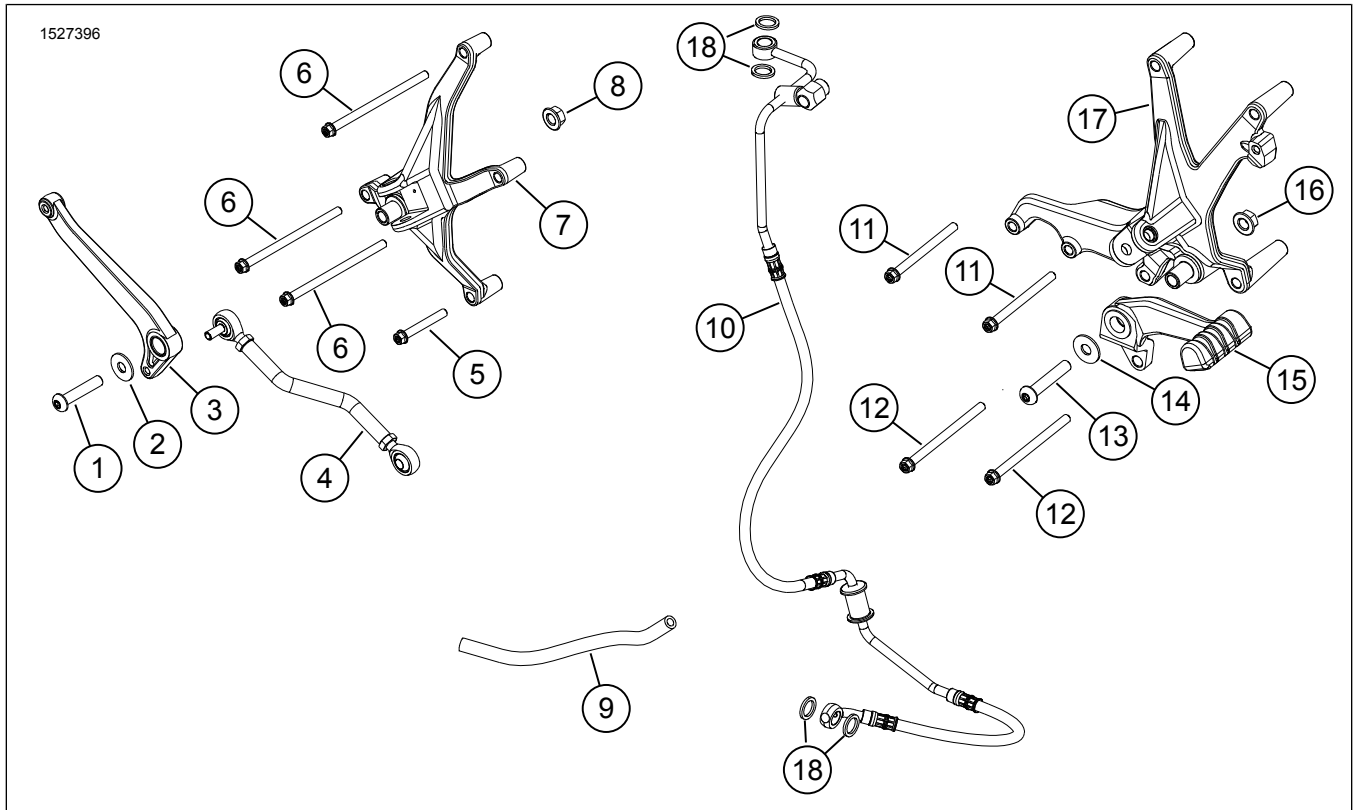


Figure 1. Kit Contents: Mid Controls

Table 2. Kit Contents: Mid Controls

<input checked="" type="checkbox"/>	Verify that all contents are present in the kit before installing or removing items from vehicle.				
Item	Qty	Description	Part No.	Notes	
<input type="checkbox"/>	1	1	Screw, button head, M8 x 1.25	10201009	
<input type="checkbox"/>	2	1	Washer	10600060	
<input type="checkbox"/>	3	1	Shift lever	33600352	
<input type="checkbox"/>	4	1	Shift rod linkage	33600354	
<input type="checkbox"/>	5	1	Screw, flange, M6 x 44	10201099	
<input type="checkbox"/>	6	3	Screw, flange, M6 x 100	10201098	
<input type="checkbox"/>	7	1	Left foot peg mount bracket	50502140	
<input type="checkbox"/>	8	1	Lock nut	3725M	
<input type="checkbox"/>	9	1	Brake hose, rear master cylinder to reservoir	41700974	
<input type="checkbox"/>	10	1	Brake line, rear master cylinder to ABS Module	41800848	
<input type="checkbox"/>	11	2	Screw, flange, M6 x 70	10201094	
<input type="checkbox"/>	12	2	Screw, flange, M6 x 85	10201095	
<input type="checkbox"/>	13	1	Screw, button head, M8 x 1.25	10200931	
<input type="checkbox"/>	14	1	Washer	10600060	
<input type="checkbox"/>	15	1	Brake lever	50600487	
<input type="checkbox"/>	16	1	Lock nut	3725M	
<input type="checkbox"/>	17	1	Right foot peg mount bracket	50502139	
<input type="checkbox"/>	18	4	Brake line gasket	41751-06A	

GENERAL

Models

For model fitment information, see the Parts and Accessories (P&A) Retail Catalog or the Parts and Accessories section of www.harley-davidson.com.

Verify that the most current version of the instruction sheet is used. It is available at: h-d.com/isheets

Contact Harley-Davidson Customer Support Center at 1-800-258-2464 (U.S. only) or 1-414-343-4056.

Installation Requirements

▲ WARNING

Rider and passenger safety depend upon the correct installation of this kit. Use the appropriate service manual procedures. If the procedure is not within your capabilities or you do not have the correct tools, have a Harley-Davidson dealer perform the installation. Improper installation of this kit could result in death or serious injury. (00333b)

NOTE

This instruction sheet references service manual information. A service manual for the year and model motorcycle is required for this installation and is available from:

- A Harley-Davidson dealer.
- H-D Service Information Portal, a subscription-based access available for most 2001 and newer models. For more information see *Frequently ask questions about subscriptions*.

PREPARE

1. Remove seat. See service manual.
2. Remove main fuse. See service manual.
3. Remove chin scoop assembly. See service manual.
4. Remove muffler assembly. See service manual.

5. Remove right electrical compartment panel. See service manual.

6. Drain brake fluid from rear brake system.

REMOVE

1. Remove Original Equipment (OE) rear brake switch. Save for later use. See service manual.

NOTE

Save *p-clips*, hardware and banjo bolt for later use.

2. Remove rear master cylinder to Anti-lock Braking System (ABS) module brake line and discard. See service manual.

a. Discard brake line gaskets.

3. Remove rear master cylinder with brake fluid reservoir. Save for later use. See service manual.

4. Remove left and right foot peg assemblies. Save for later use. See service manual.

5. Remove left shifter peg. Save for later use. See service manual.

6. Remove OE footrest assemblies and discard. See service manual.

NOTE

Save screw from rear of shift rod to transmission shift lever.

a. **Right:** Brake pedal and mount bracket.

b. **Left:** Shift rod, shift lever, and mount bracket.

7. See Figure 2. Replace rear master cylinder brake hose.

a. Remove OE brake hose (2) and discard.

b. Reuse brake hose clips.

c. Install new brake hose (1) from kit.

8. See Figure 3. Remove three screws (2) from coolant manifold (1) and discard.

9. See Figure 4. Remove four screws (1) from primary cover (2) and discard.

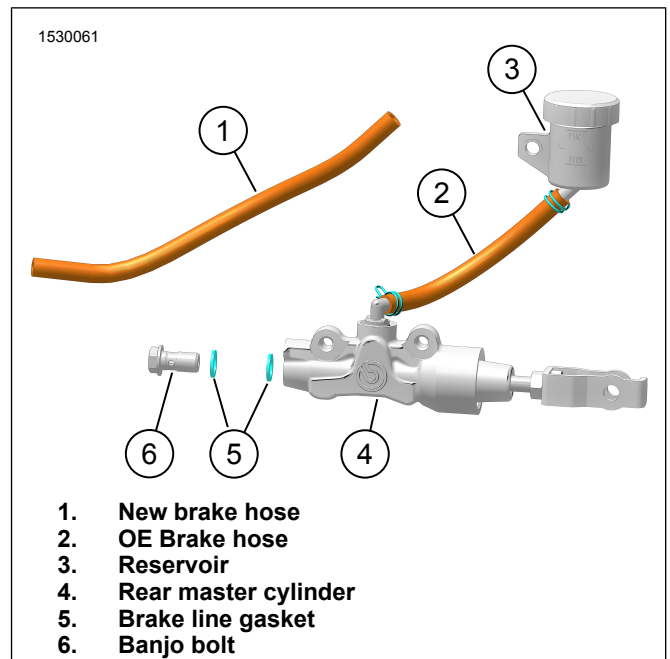


Figure 2. Rear Master Cylinder

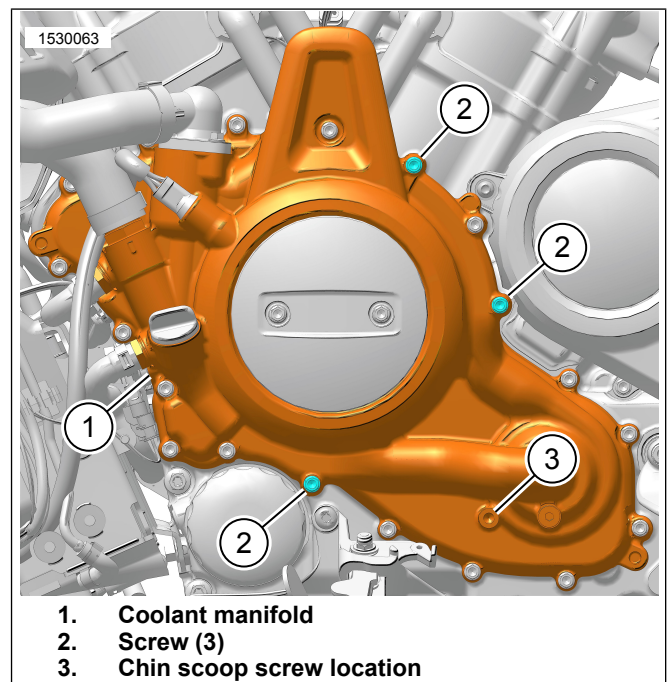
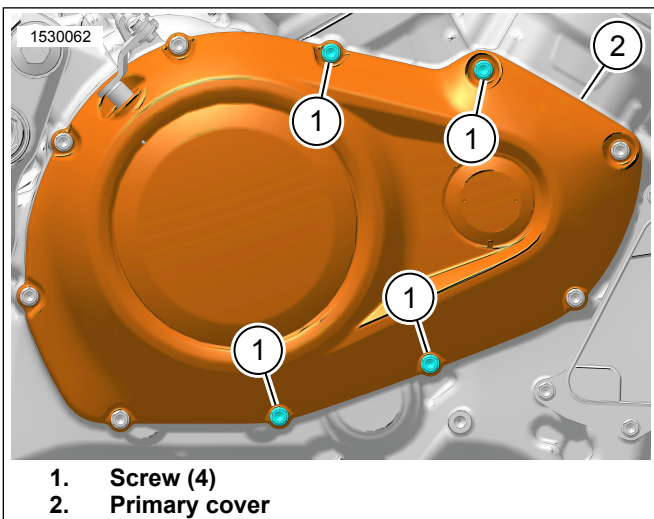


Figure 3. Coolant Manifold



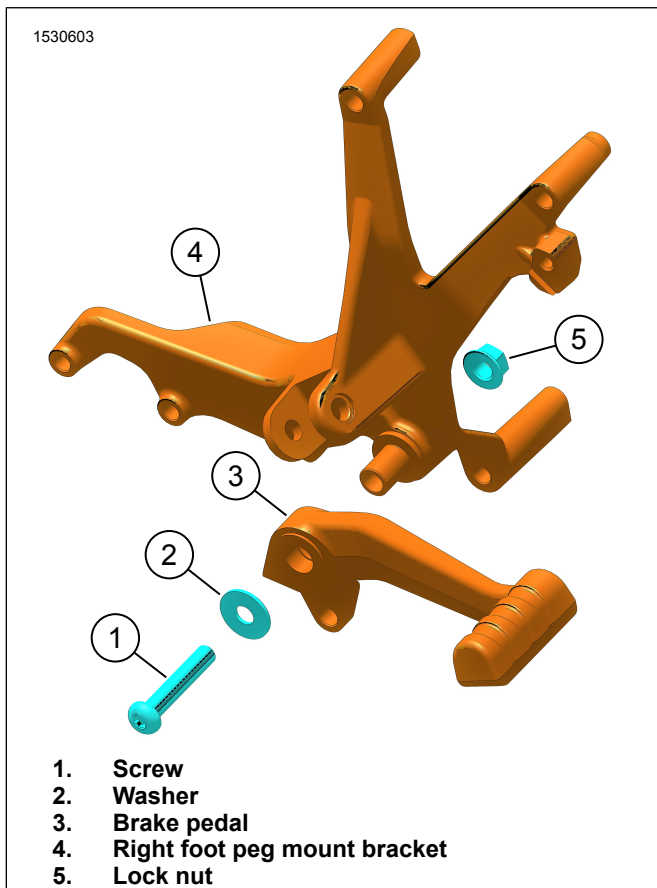
1. Screw (4)
2. Primary cover

Figure 4. Primary Cover

INSTALL

Brake Pedal Assembly

1. See Figure 5. Install brake pedal (3) to right foot peg mount bracket (4).
2. Install washer (2) and screw (1).
3. Install lock nut (5). Tighten.
Torque: 17–21 N·m (13–15 ft-lbs) *Brake pedal lock nut*

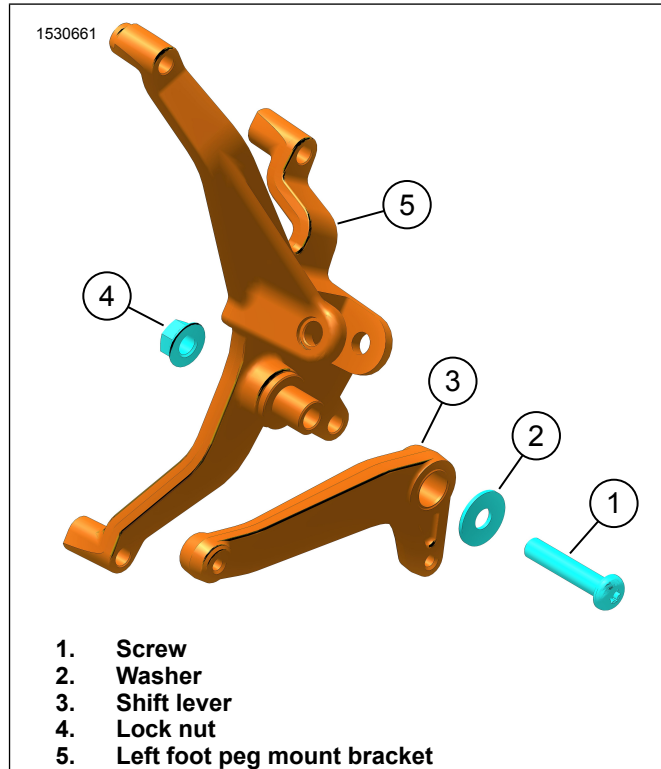


1. Screw
2. Washer
3. Brake pedal
4. Right foot peg mount bracket
5. Lock nut

Figure 5. Brake Pedal Assembly

Shift Lever Assembly

1. See Figure 6. Install shift lever (3) to left foot peg mount bracket (5).
2. Install washer (2) and screw (1).
3. Install lock nut (5). Tighten.
Torque: 24.5–30 N·m (18–22 ft-lbs) *Shift lever lock nut*



1. Screw
2. Washer
3. Shift lever
4. Lock nut
5. Left foot peg mount bracket

Figure 6. Clutch Shift Lever Assembly

Left Foot Peg Mount

1. See Figure 7. Install left foot peg mount bracket (3).
 - a. Position mount bracket (3) over coolant manifold where screws were previously removed.
2. Install screws (4). Tighten.
Torque: 8–10 N·m (6–7 ft-lbs) *Left foot peg mount bracket screw*
3. Install shift rod linkage (7).
4. Install screws (5). Tighten.
Torque: 10.5–12.5 N·m (8–9 ft-lbs) *Shift rod linkage screw.*
 - a. Use rear shift rod screw (5) that was previously removed.
 - b. Clock the transmission shift bracket (8) as needed. See service manual.
5. Install shifter peg (2) and screw (1). Tighten.
Torque: 10.5–12 N·m (8–9 ft-lbs) *Foot peg screw.*

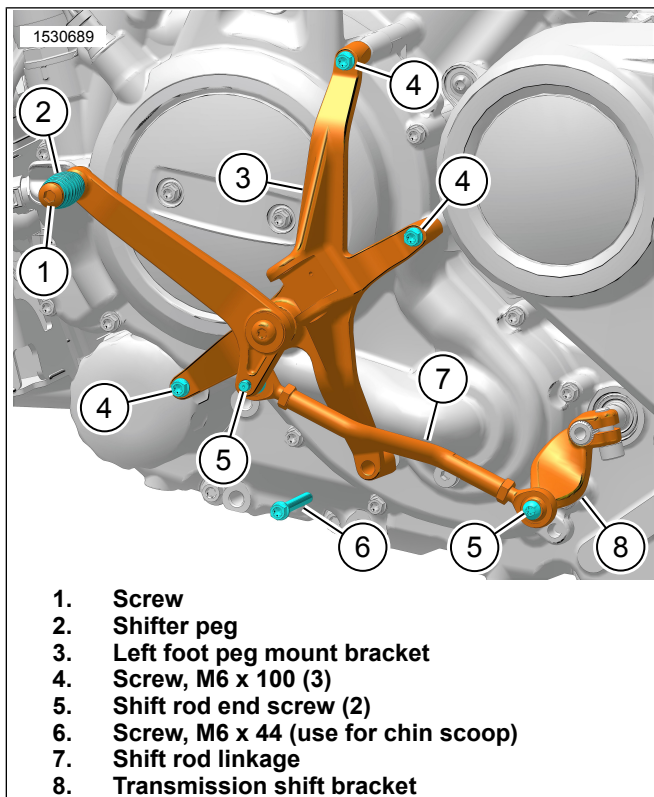


Figure 7. Left Foot Peg Mount Bracket

Right Foot Peg Mount

1. See Figure 8. Install rear master cylinder and reservoir.
 - a. Install rear master cylinder (9).
 - b. Install screws (8). Tighten.
Torque: 9–11 N·m (7–8 ft-lbs) *Rear master cylinder screw*
 - c. Route brake hose behind right foot peg mount bracket (1).
 - d. Loosely install rear master cylinder reservoir (4) with screw (3).
2. Install right foot peg mount bracket (1).
 - a. Position mount bracket (1) over primary cover where screws were previously removed.
3. Install screws (2 and 5). Tighten.
Torque: 10.6–13 N·m (8–10 ft-lbs) *Foot peg mount bracket screw*
4. With vehicle upright, level rear master cylinder reservoir (4).
5. Tighten screw (3).
Torque: 7–9 N·m (5–7 ft-lbs) *Rear master cylinder reservoir screw*
6. Align brake pedal with rear master cylinder.
7. Install clevis pin (7) and cotter pin (6).

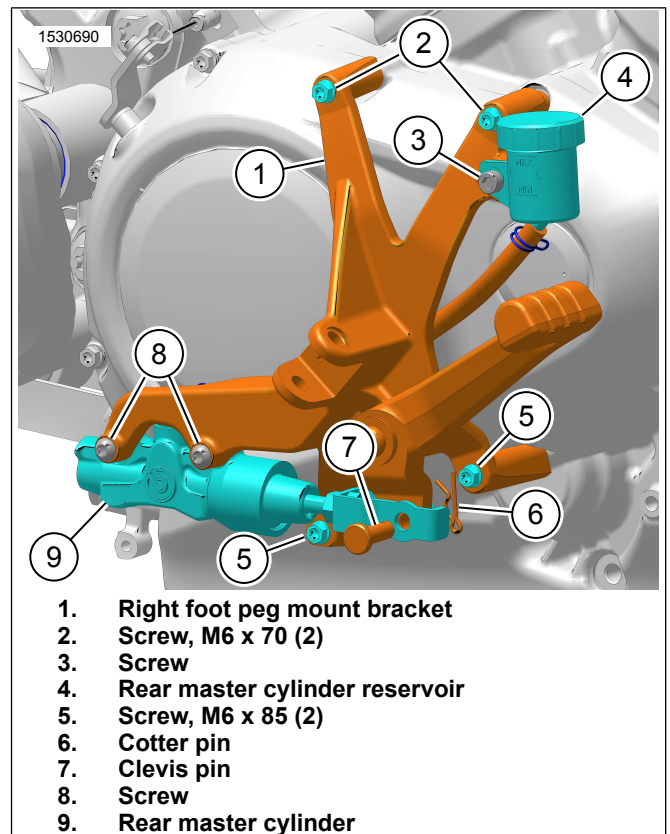


Figure 8. Right Foot Peg Mount Bracket

Brake Line

1. See Figure 9. Install OE brake switch to brake line (2). See service manual.
2. Route brake line (2) from rear master cylinder (4) to ABS module (1). See service manual.
3. Install brake line (2) at ABS module. Loosely install banjo bolt with **new** brake line gaskets. See service manual.
4. Loosely install clamps (5) to brake line (2). See service manual.
5. See Figure 10. Install brake line (2) at rear master cylinder (3). Loosely install banjo bolt (1) with **new** brake line gaskets (2).
6. See Figure 9. Tighten brake line clamps (5). See service manual.
7. Tighten banjo bolt at ABS module.
Torque: 25.5–28.5 N·m (19–21 ft-lbs) *ABS Module banjo bolt*
8. Install chin scoop assembly. See service manual.
 - a. See Figure 7. Use screw (6) to complete procedure.
 - b. Check for clearance between chin scoop and rear brake line. Adjust brake line as needed.

- c. Tighten banjo bolt at rear master cylinder.
Torque: 25.5–28.5 N·m (19–21 ft-lbs) *Rear master cylinder banjo bolt*

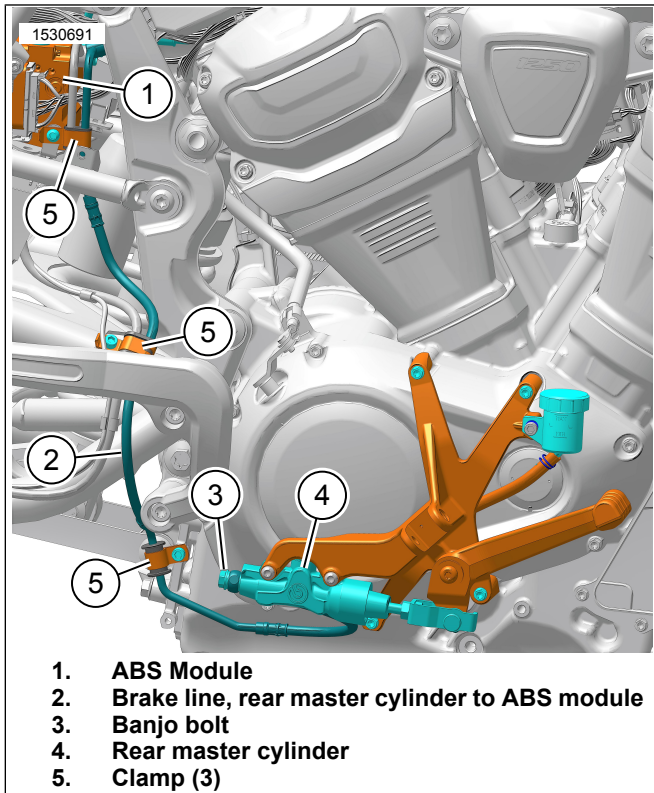


Figure 9. New Brake Line

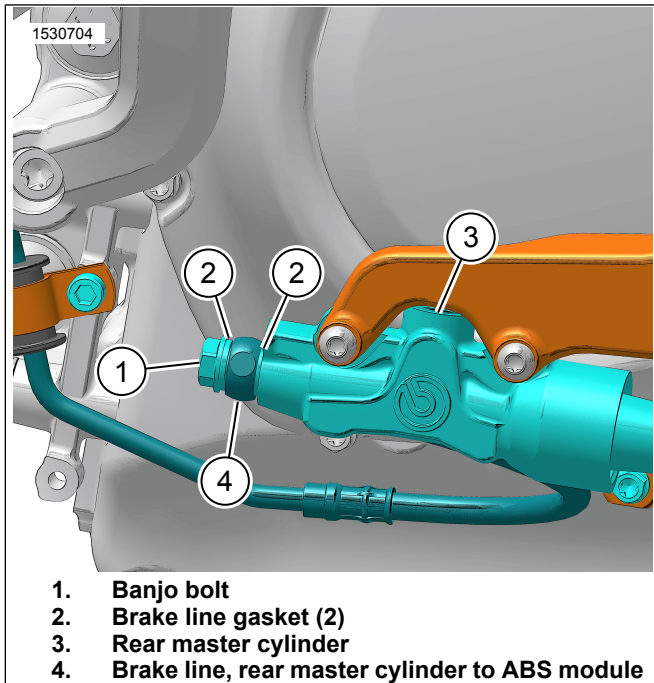


Figure 10. Rear Master Cylinder

- 3. Flash ABS brake system with special tool.
Special Tool: DIGITAL TECHNICIAN II (HD-48650)
- 4. Install right electrical compartment panel. See service manual.
- 5. Install muffler assembly. See service manual.
- 6. Install main fuse. See service manual.
- 7. Install seat. See service manual.
- 8. Check operation of stop lamp.
- 9. Test ride motorcycle. Repeat the bleeding procedure if brakes feel spongy.

COMPLETE

- 1. Connect OE rear brake switch connector. See service manual.
- 2. Fill and bleed rear brake system. See service manual.