



# INSTRUCTIONS

J06178

2025-01-23



## SCREAMIN' EAGLE 110 (103 CI TO 110 CI) TIRE SHREDDER KIT

### GENERAL

#### Kit Number

92500037A

#### Models

For model fitment information, see the P&A Retail Catalog or the Parts and Accessories section of [www.harley-davidson.com](http://www.harley-davidson.com) (English only).

#### Installation Requirements

Separate purchase and installation of extra parts or accessories may be required for proper installation of this kit. See the Screamin' Eagle® Pro Catalog or contact a Harley-Davidson® Dealer.

#### NOTE

*Do not use stock CVO pistons with the 4" Bolt-on Cylinders or interference occurs between the pistons and crankcase.*

#### ⚠ WARNING

**Rider and passenger safety depend upon the correct installation of this kit. Use the appropriate service manual procedures. If the procedure is not within your capabilities or you do not have the correct tools, have a Harley-Davidson dealer perform the installation. Improper installation of this kit could result in death or serious injury. (00333b)**

#### NOTE

*This instruction sheet references service manual information. A service manual for this year/model motorcycle is required for this installation. One is available from a Harley-Davidson dealer.*

#### Kit Contents

See Figure 1 to Figure 4, and Table 1 to Table 4.

#### NOTE

*This kit is intended for High Performance or Racing applications only and is not legal for sale or use on pollution controlled motor vehicles. This kit may reduce or void the limited vehicle warranty.*

*Engine-related performance parts are intended FOR THE EXPERIENCED RIDER ONLY.*

### REMOVAL

#### Prepare for Service

1. Disarm security system.
2. Raise the motorcycle.

3. See the service manual. Remove seat.
4. See the service manual. Remove main fuse.

#### ⚠ WARNING

**When servicing the fuel system, do not smoke or allow open flame or sparks in the vicinity. Gasoline is extremely flammable and highly explosive, which could result in death or serious injury. (00330a)**

5. See the service manual. Remove fuel tank.

#### Remove Engine Components

1. See the service manual. Remove existing air cleaner assembly.
2. See the service manual. Remove existing exhaust system.
3. See the service manual. Disassemble engine top end and cam plate assembly.
4. See the service manual. Remove existing clutch diaphragm spring.

### INSTALLATION

#### Install Engine and Clutch Components

1. See Figure 3. Install new inner cam bearings included with Kit.
2. See Figure 1 through Figure 3. See the service manual. Assemble cams to camplate, performance cylinder heads and engine top end using parts from kit.
3. Assemble throttle body and injectors from kit using original equipment fuel line and fuel rail. Refer to instructions in the supplied throttle body kit.
4. Install throttle body assembly to engine using intake flanges and seals supplied in the throttle body kit. Refer to instructions from the supplied throttle body kit.
5. See the service manual. Install clutch diaphragm spring from kit.
6. See the service manual. Install exhaust system.
7. Install air cleaner assembly. Follow instructions in air cleaner kit.

#### Final Assembly

1. See the service manual. Install fuel tank.
2. See the service manual. Install seat.
3. See the service manual. Install main fuse.

**▲ WARNING**

After installing seat, pull upward on seat to be sure it is locked in position. While riding, a loose seat can shift causing loss of control, which could result in death or serious injury. (00070b)

**NOTICE**

You must recalibrate the ECM when installing this kit. Failure to properly recalibrate the ECM can result in severe engine damage. (00399b)

4. Recalibrate the ECM. Contact a Harley-Davidson dealer for details.

5. Run engine. Repeat several times to verify proper operation.

**Operation**

Refer to BREAK-IN RIDING RULES in the Owner's Manual to break in the motorcycle.

**SERVICE PARTS**

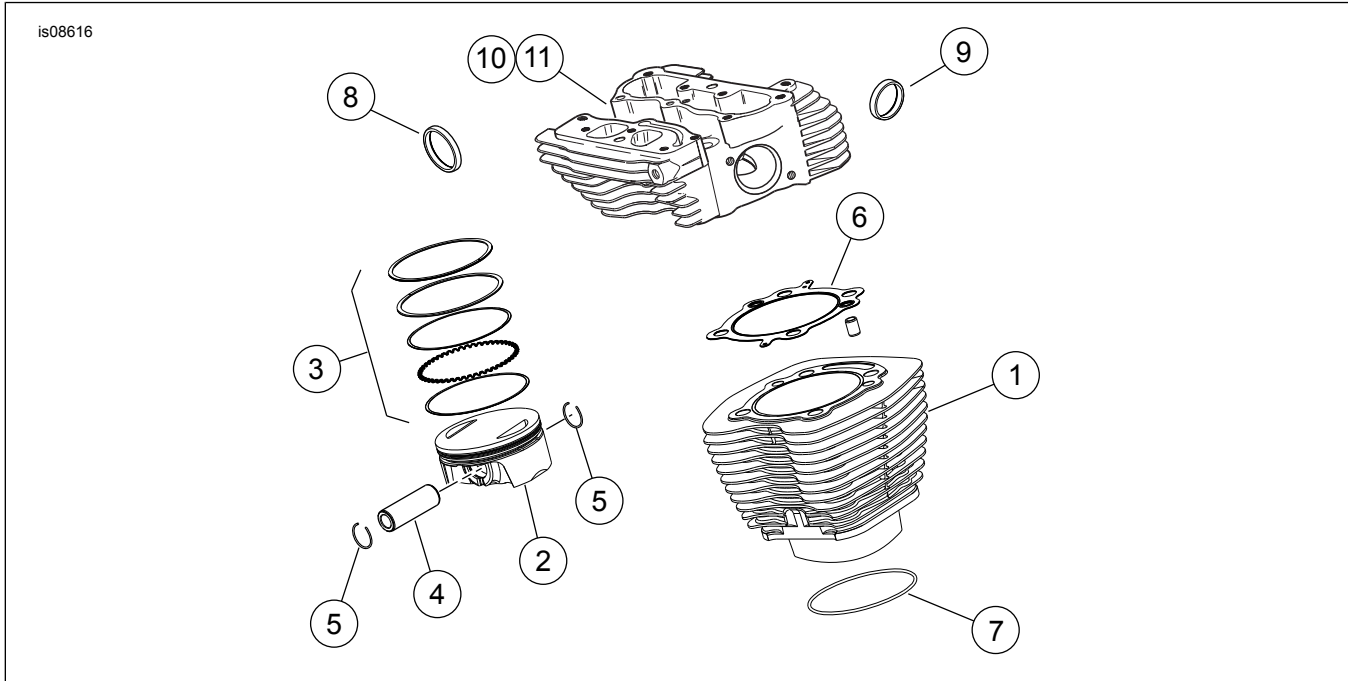


Figure 1. Service Parts: Screamin' Eagle Twin Cam 110 (103 CI to 110 CI) Tire Shredder Kit

Table 1. Service Parts: Screamin' Eagle Twin Cam 110 (103 CI to 110 CI) Tire Shredder Kit

Item	Description (Quantity)	Part Number	Item	Description (Quantity)	Part Number
1	Cylinder assembly (Black) (2)	16800102	7	O-ring, cylinder spigot (2)	11256
2	Piston (2)	Not Sold Separately	8	Gasket, exhaust port (2)	65324-99A
3	Piston Ring Set (2)	21951-11	9	Seal, intake manifold (2)	26995-86B
4	Piston pin (2)	22100001	10	Cylinder head, front (black)	16500014A
5	Piston pin circlip (4)	22097-99	11	Cylinder head, rear (black)	16500015A
6	Gasket, cylinder head (2)	16801-07B	Notes: Piston Kit (2190050) includes 2 through 5. Item 6 through 9 are also included in Top End and Cam Gasket Kit (16500385). For cylinder head assembly (11, 12) components, refer to instruction sheet J05340.		

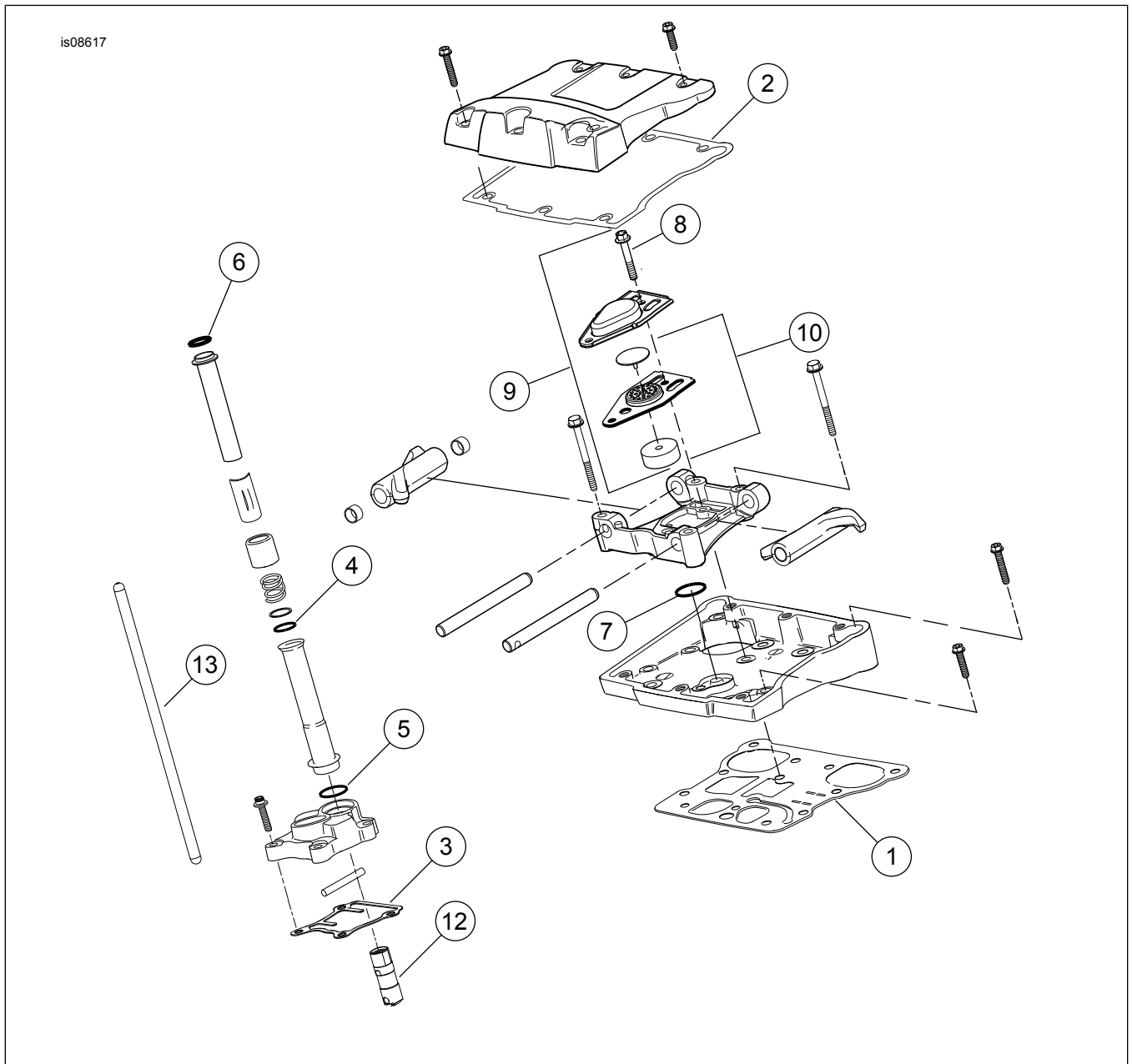
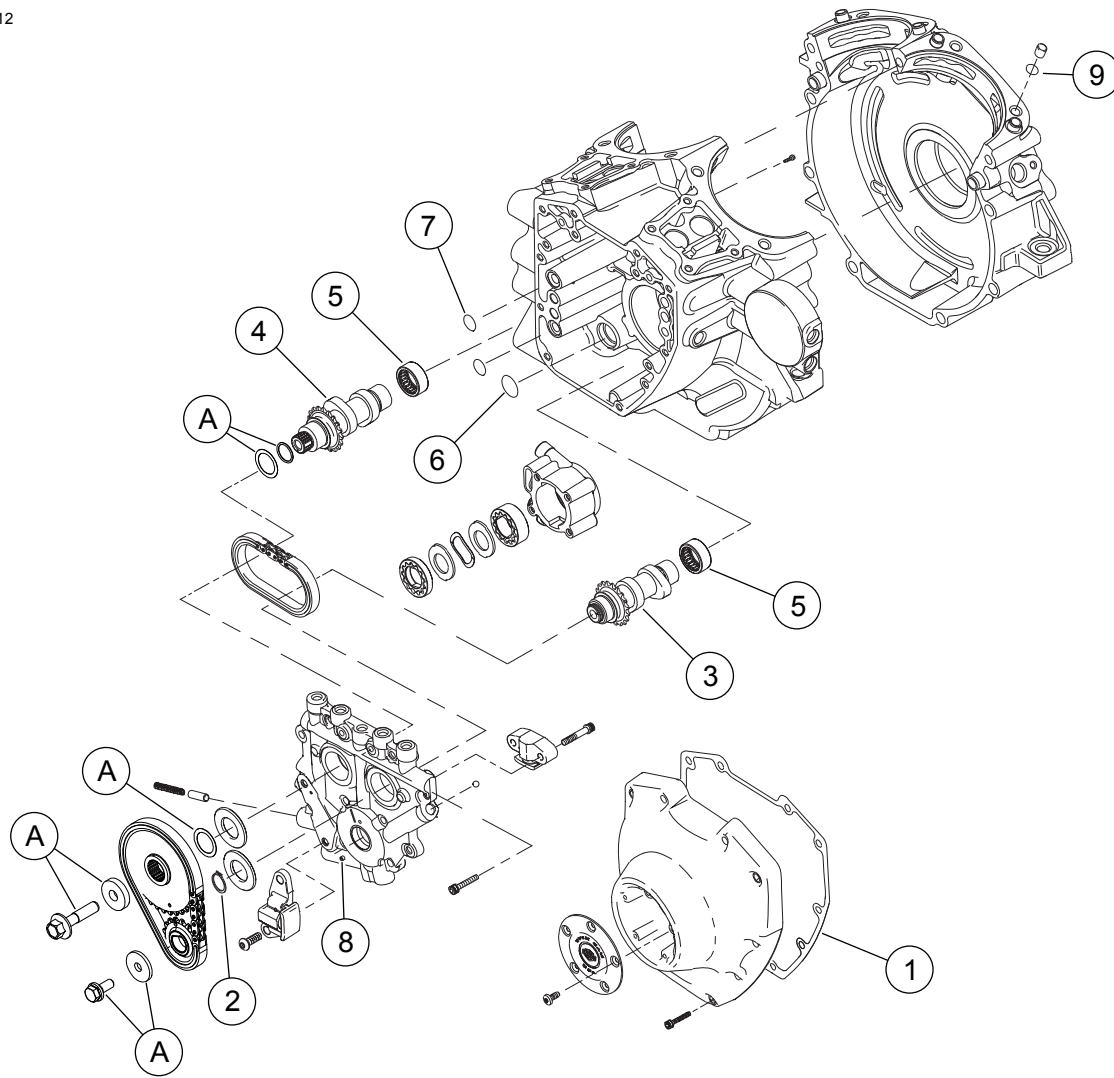


Figure 2. Service Parts: Screamin' Eagle Twin Cam 110 (103 CI to 110 CI) Tire Shredder Kit

Table 2. Service Parts: Screamin' Eagle Twin Cam 110 (103 CI to 110 CI) Tire Shredder Kit

Item	Description (Quantity)	Part Number	Item	Description (Quantity)	Part Number
1	Gasket, rocker cover base (2)	16719-99B	8	Breather bolt (4)	4400
2	Gasket, rocker cover top (2)	17386-99A	9	Breather assembly (2)	17025-03A
3	Gasket, tappet cover (2)	18635-99B	10	Baffle assembly (2) [includes gaskets (2)]	26500002
4	O-ring, middle push rod cover (4)	11132A	11	Spring, clutch diaphragm (2) (Not Shown)	37951-98
5	O-ring, lower push rod cover (4)	11145A	12	High capacity tappet kit	18572-13
6	O-ring, upper push rod cover (4)	11293	13	Perfect fit pushrod kit	18400-03
7	O-ring, rocker arm support (2)	11270	Notes: Items 1 through 10 are included in Top End and Cam Gasket Kit (16500385).		



**Figure 3. Service Parts: Screamin' Eagle Twin Cam 110 (103 CI to 110 CI) Tire Shredder Kit**

**Table 3. Service Parts: Screamin' Eagle Twin Cam 110 (103 CI to 110 CI) Tire Shredder Kit**

Item	Description (Quantity)	Part Number
1	Gasket, cam cover	25244-99A
2	Retaining ring	11461
3	Camshaft, front	Not Sold Separately
4	Camshaft, rear	Not Sold Separately
5	Bearing kit, needle, left side (2)	24018-10
6	O-ring, oil pump to cam plate	11293
7	O-ring, cam plate to crankcase (2)	11301
8	Roll pin	601
9	O-ring, crankcase dowel (2)	11273
10	Hi-flow injector kit (not shown)	27796-08
11	58 mm ETC throttle body kit (not shown)	27713-08
<b>Items mentioned in text, but not included in kit:</b>		
A	Cam drive retention kit (includes screw and washer)	91800088
Items 3 and 4 are available in Cam Kit (25485-10)		
Items 1, 3, and 5 through 9 are included in Top End and Cam Gasket Kit (16500385)		

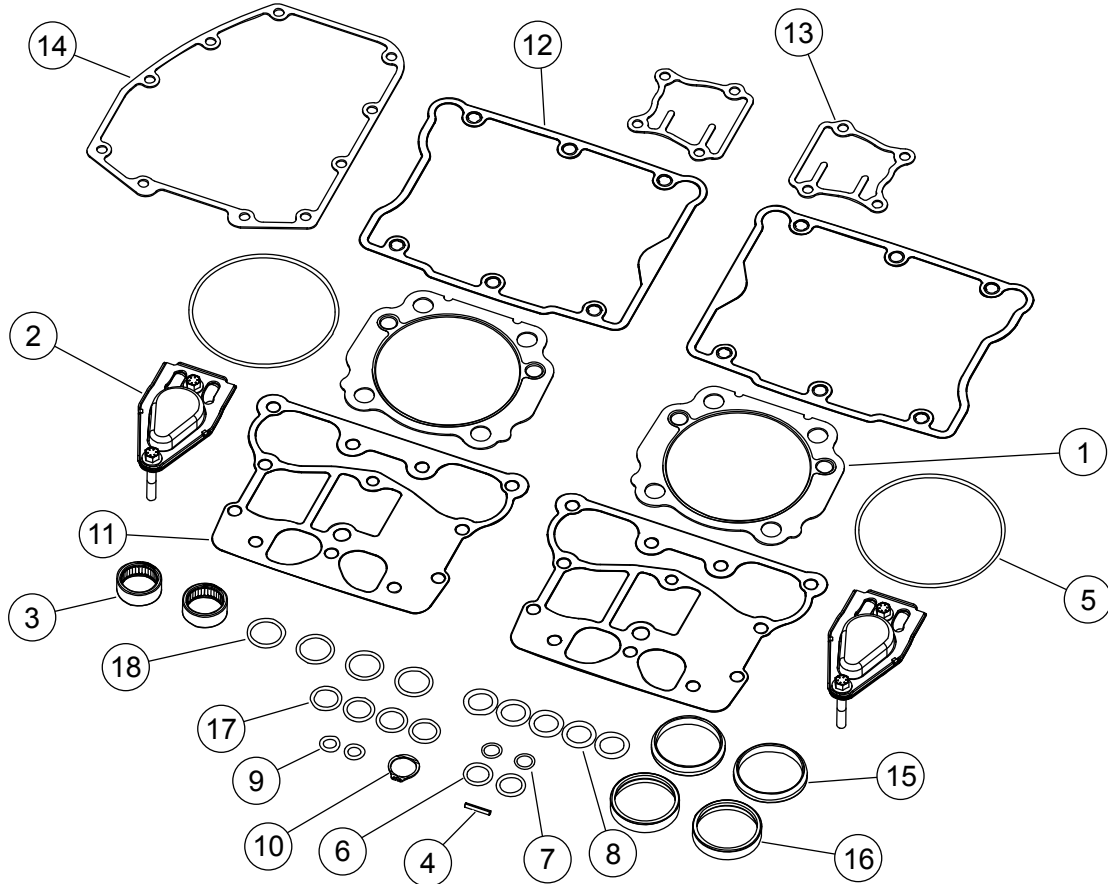


Figure 4. Service Parts: Screamin' Eagle Twin Cam 110 (103 CI to 110 CI) Tire Shredder Kit

Table 4. Service Parts: Screamin' Eagle Twin Cam 110 (103 CI to 110 CI) Tire Shredder Kit

Item	Description (Quantity)	Part Number
1	Gasket, cylinder head (2)	16801-07B
2	Breather assembly (2)	17025-03A
3	Bearing kit, needle, left side, camshaft (2)	24018-10
4	roll pin, cam plate pressure relief	601
5	O-ring, cylinder spigot (2)	11256
6	O-ring, rocker arm support (2)	11270
7	O-ring, crankcase dowel (2)	11273
8	O-ring, upper push rod cover (4), oil pump to cam plate (1)	11293
9	O-ring, cam plate to crankcase (2)	11301
10	Retaining ring	11461
11	Gasket, rocker cover base (2)	16719-99B
12	Gasket, rocker cover top (2)	17386-99A
13	Gasket, Tappet cover (2)	18635-99B
14	Gasket, cam cover	25244-99A
15	Seal, intake manifold (2)	26995-86B
16	Gasket, exhaust port (2)	65324-83B
17	O-ring, middle push rod cover (4)	11132A
18	O-ring, lower push rod cover (4)	11145A
<b>Items mentioned in text, but not included in kit:</b>		
A	Valve seal (4) (not shown) (not required)	18094-02A
Items 1, through 18 are included in 4 in Bolt-on Air Cooled Top End and Cam Gasket Kit (16500385).		