



INSTRUCTIONS

J05885


2026-03-27



SCREAMIN EAGLE BIG TWIN COMPENSATOR

GENERAL INFORMATION

Table 1. General Information

Kits	Suggested Tools	Skill Level ⁽¹⁾
40100061, 42200064A, 42200095A	Safety glasses, Torque wrench, Isopropyl alcohol, Loctite 262 High Strength Threadlocker, T70 TORX bit, Harley-Davidson Special Tools: <ul style="list-style-type: none"> • Electrical Contact Lubricant (Part No. 99861-02) • Caulk Gun Conversion Kit (Part No. 11100075) • Primary Drive Locking Tool, 2007-later Touring models (Part No. HD48219) • Primary Drive Locking Tool, 2006-later Dyna and 2007-later Softail models (Part No. HD47977) 	
<i>(1) A combination of software calibration, special tools or techniques required for installation</i>		

KIT CONTENTS

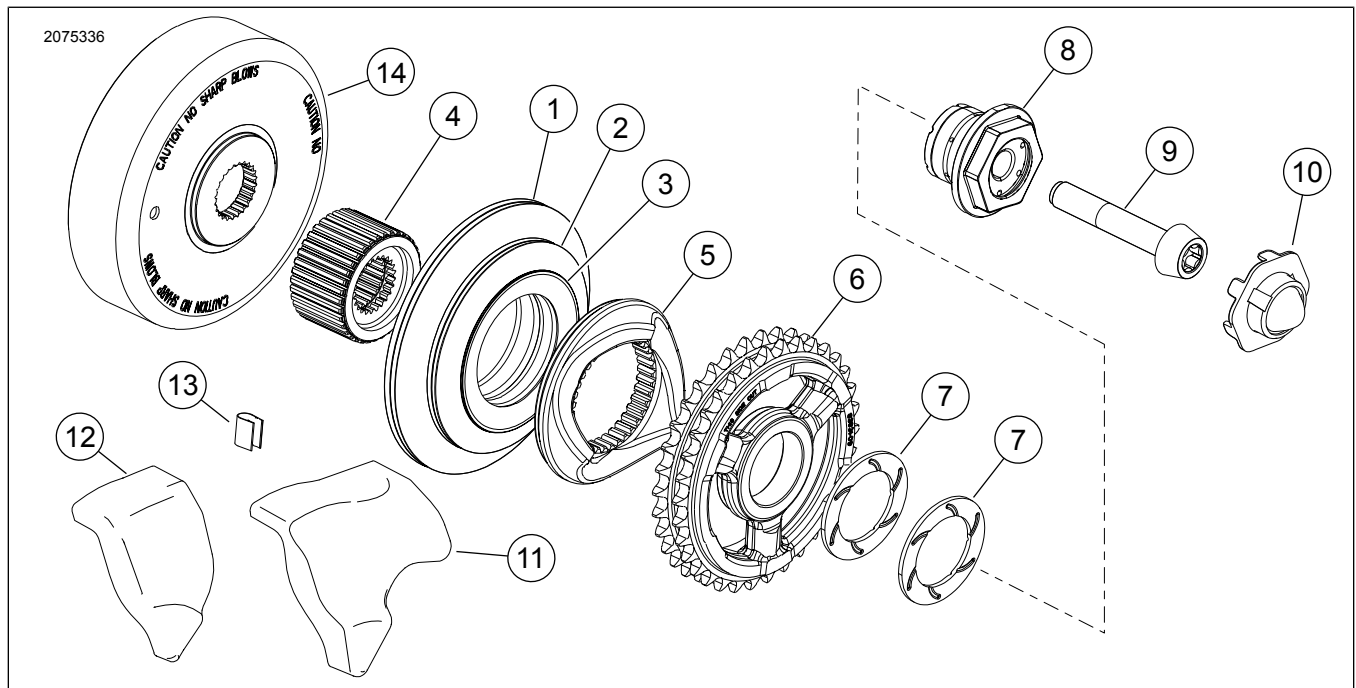


Figure 1. Kit Contents: Service Parts: Screamin' Eagle Big Twin Compensator Kit

Table 2. Kit Contents: Service Parts: Screamin' Eagle Big Twin Compensator Kit

<input checked="" type="checkbox"/>	Verify that all contents are present in the kit before installing or removing items from vehicle.				
Item	Qty	Description	Part No.	Notes	
Spring Pack (includes items 1 through 3)					
<input type="checkbox"/>	1	2	Large disc spring	Not sold separately	
<input type="checkbox"/>	2	2	Medium disc spring	Not sold separately	
<input type="checkbox"/>	3	1	Small disc spring	Not sold separately	
<input type="checkbox"/>	*	1	Compensator Kit, 2006 and later Dyna, 2007 and later Touring, 2007 and later Softail (except models listed below) (includes items 4 through 13)	36500034A	
<input type="checkbox"/>	*	1	Compensator Kit, FXCW/C (Rocker), FXSTSSE3 (Screamin' Eagle Softail Springer), FXSBSE (Screamin' Eagle Softail Breakout) and FXSB/FXSB103 (Breakout) models (includes items 4 through 13)	36500078A	
<input type="checkbox"/>	4	1	Shaft extension	Not sold separately	
<input type="checkbox"/>	5	1	Sliding cam	Not sold separately	
<input type="checkbox"/>	6	1	Compensating sprocket	Not sold separately	
<input type="checkbox"/>	7	2	Thrust washer	40100064	
<input type="checkbox"/>	8	1	Sprocket retainer	Not sold separately	
<input type="checkbox"/>	9	1	Screw	10500031	
<input type="checkbox"/>	10	1	Retainer clip	12200065	
<input type="checkbox"/>	11	1	Oil deflector (Touring models)	62700063	
<input type="checkbox"/>	12	1	Oil deflector (Dyna and Softail models)	62700064	
<input type="checkbox"/>	13	1	Oil spinner, FXCW/C (Rocker), FXSTSSE3 (Screamin' Eagle Softail Springer), FXSBSE (Screamin' Eagle Softail Breakout) and FXSB/FXSB103 (Breakout) models only	62700062	
<input type="checkbox"/>	14	1	Alternator rotor assembly (as required)	30041-08A	

GENERAL

Instruction sheet is also available electronically. To verify you are using the most current version available, do one of the following:

- Go to h-d.com/isheets
- Scan QR code in upper left corner of the instruction sheet

Models

This kit fits vehicles:

- 2006-2017 Dyna
- 2007-2017 Softail
- 2007-2016 Touring

For model fitment information, see the Parts and Accessories (P&A) Retail Catalog or the Parts and Accessories section of www.harley-davidson.com.

Contact Harley-Davidson Customer Support Center at 1-800-258-2464 (U.S. only) or 1-414-343-4056.

Installation Requirements

⚠ WARNING

Rider and passenger safety depend upon the correct installation of this kit. Use the appropriate service manual procedures. If the procedure is not within your capabilities or you do not have the correct tools, have a Harley-Davidson dealer perform the installation. Improper installation of this kit could result in death or serious injury. (00333b)

NOTE

This instruction sheet references service manual information. A service manual for the year and model motorcycle is required for this installation and is available from:

- A Harley-Davidson dealer.

- *H-D Service Information Portal (SIP), a subscription-based access available for most 2001 and newer models.*

These items are available at your local Harley-Davidson dealership.

- Separate purchase of **new** primary cover gasket (model specific) is required for this installation.
- Separate purchase Oil Deflector Installation Kit (Part No. 11100088) is required for this installation.
- **2006-2011 Dyna, 2007-2011 Softail (except 2008-209 FXCW, 2008-2011 FXCWC, 2009 FXSTSSE3, 2010 FXSTSE and 2011 FXSTSE2) and 2007-2010 Touring models:** Separate purchase Rotor (Part No. 30041-08A) is required for this installation. Included in (Part No. 40100061).
- **2006 Dyna:** Separate purchase Stator (Part No. 30017-07) is required for this installation.

PREPARE

▲ WARNING

Disconnect negative (-) battery cable first. If positive (+) cable should contact ground with negative (-) cable connected, the resulting sparks can cause a battery explosion, which could result in death or serious injury. (00049a)

1. Remove seat. See service manual.
2. Disconnect battery cables (negative cable first). See service manual.

REMOVE

1. Remove drive components. See service manual.
2. **2006-2011 Dyna, 2007-2011 Softail (except 2008-209 FXCW, 2008-2011 FXCWC, 2009 FXSTSSE3, 2010 FXSTSE and 2011 FXSTSE2) and 2007-2010 Touring models:** Remove alternator rotor. See service manual.
3. **2006 Dyna:** Replace stator with **new** stator (Part No. 30017-07). See service manual.

INSTALL

NOTE

Before beginning, read and understand the MSDS for adhesive used in Oil Rib Installation Kit. Use only as instructed. Use appropriate safety equipment and gloves. Properly dispose of used application tip and replace cap.

1. See Figure 2. Assemble adhesive cartridge and Caulk Gun Conversion Kit (Part No. 11100075) into caulk gun (not included).



Figure 2. Caulk Gun and Adapter

2. Clean primary cover with PJ-1 or equivalent. Wipe the deflector installation area with isopropyl alcohol to remove residue. Allow to dry completely.
3. Test fit appropriate oil deflector to the cleaned primary cover:
 - a. **Touring Models:** (Part No. 62700063, Item 11)
 - b. **Softail or Dyna Models:** (Part No. 62700064, Item 12)

4. NOTE

Before applying adhesive to part, purge the epoxy from the tube until it comes out a uniform grey.

See Figure 3. Place oil deflector (cover side up) on a clean protected surface. Apply adhesive:

- a. Apply adhesive to the perimeter of the part.
- b. Create an "X" pattern across the part.
- c. Apply adhesive to the sides that contact the primary cover.

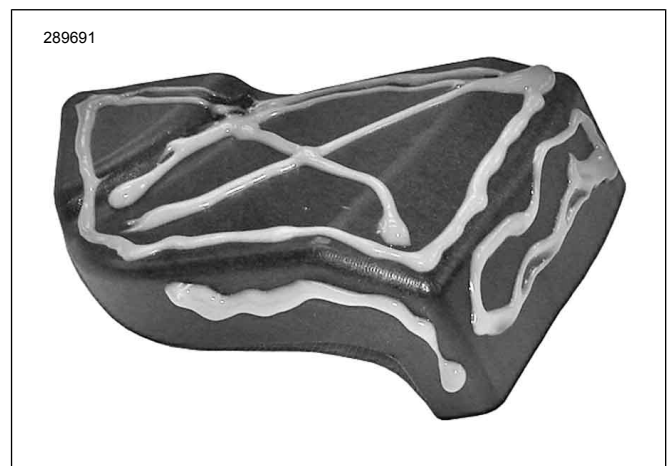


Figure 3. Apply Adhesive

5. See Figure 4. Carefully position deflector in primary cover and press firmly into place. Slide deflector into position. **DO NOT LIFT.**
6. Install retention clip over oil deflector rib and the adjacent aluminum rib as shown.

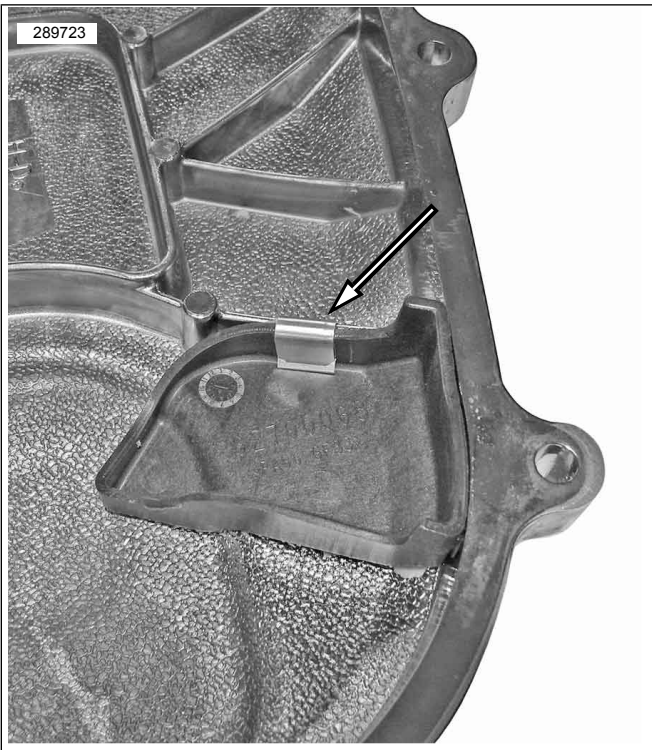


Figure 4. Install Deflector and Retaining Clip

7. See Figure 5. Protect outside surface of primary cover to avoid damage.
8. Secure oil deflector in place using a C-clamp. Allow approximately 30 minutes before handling.

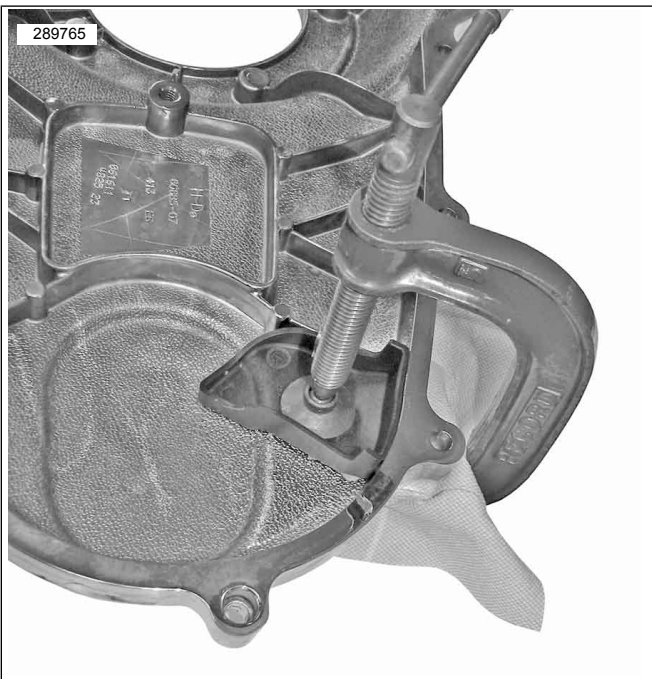


Figure 5. Clamp Components Together

9. **2006-2011 Dyna, 2007-2011 Softail (except 2008-2009 FXCW, 2008-2011 FXCWC, 2009 FXSTSSE3, 2010 FXSTSE and 2011 FXSTSE2) and 2007-2010 Touring models:** See Figure 1. Install **new** alternator rotor (14) to engine compensating sprocket shaft. See service manual.

10. See Figure 1. Apply a thin layer of primary chaincase oil to the sliding cam (5) splines and the outer splines of shaft extension (4). Install shaft extension with the flat side against alternator rotor (14).
11. See Figure 6. Outer diameters of springs must contact each other as shown.
12. See Figure 1. Install sliding cam (5) with flat face contacting small disc spring. Lubricate sliding cam (5) ramps with primary chaincase oil.

NOTE

- *Compensating sprocket (6) is installed with text "this side out" facing outward.*
 - *Clutch hub mainshaft nut has left-hand threads. Turn counterclockwise to install.*
 - *Primary chain, compensating sprocket and clutch assembly must be installed as an assembly.*
13. Place drive components (primary chain, compensating sprocket and clutch assembly) into position. A slight rotation of chain drive aids installation onto splines.

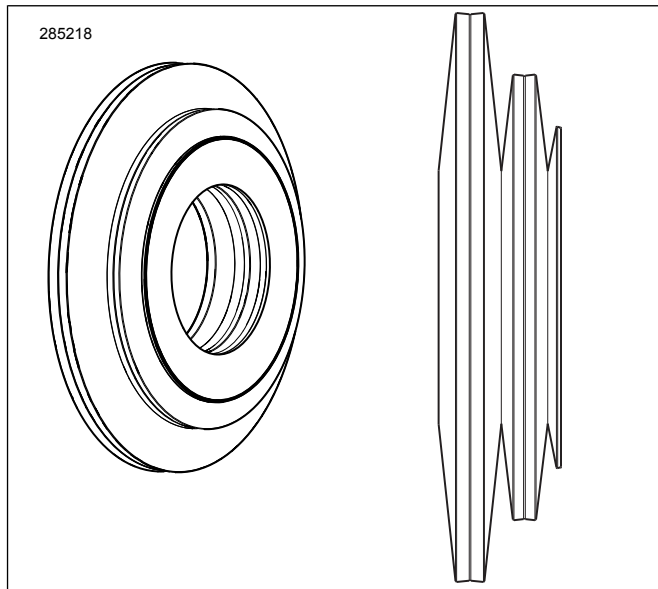


Figure 6. Spring Pack Sub-Assembly

14. Clean and prime threads of clutch hub mainshaft nut. Apply two drops of threadlocker to threads. Start nut onto mainshaft. Hand-tighten.

Consumable: LOCTITE 262 HIGH STRENGTH THREADLOCKER AND SEALANT (RED) (94759-99)

NOTE

When installing screw (9), make sure that the disc springs are properly aligned and that the spring nearest the rotor assembly has not slipped between the extension and rotor hub.

15. Lightly lubricate thrust washers (7) with a thin layer of primary chaincase oil. Install thrust washers (7), sprocket retainer (8) and screw (9). Hand tighten.
16. See Figure 7. Install PRIMARY DRIVE LOCKING TOOL between teeth of engine and clutch sprocket as shown.

Special Tool: PRIMARY DRIVE LOCKING TOOL (HD-48219)
Special Tool: PRIMARY DRIVE LOCKING TOOL (HD-47977)

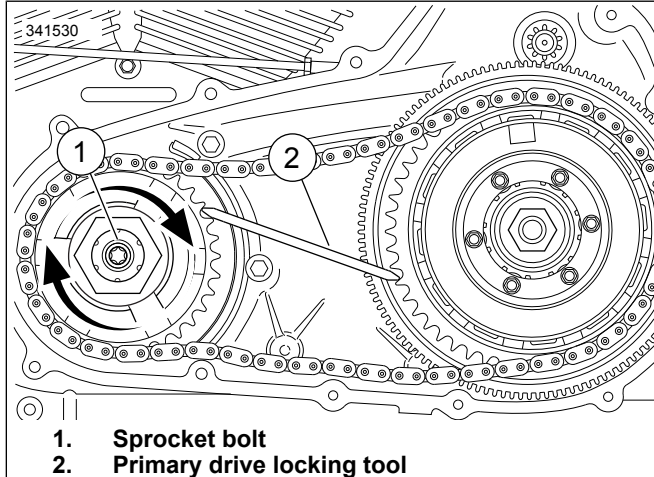


Figure 7. Installing Engine Compensating Sprocket Bolt

17.

NOTE

The compensating sprocket screw is a T70 Torx bit.

See Figure 1. Tighten screw (9). Initial torque:

Torque: 135.6 N·m (100 ft-lbs)

NOTE

Make sure shims do not fall between shaft extension and alternator rotor when loosening screw.

18. Loosen screw (9) one-half turn.

Angle: 180°

19. Tighten screw (9). Final torque:

Torque: 237.3 N·m (175 ft-lbs)

20. **Rocker (FXCW/C), Screamin' Eagle Softail Springer (FXSTSSE3), Screamin' Eagle Softail Breakout (FXSBSE) and Breakout (FXSB/FXSB103) models:** Install oil spinner (13) on sprocket retainer (8).

21. Rotate compensating sprocket (6) to make sure that there is a light pressure on sprocket from springs.

- a. No clearance should be felt.
- b. A slight rotation should be possible by hand with the transmission in neutral.

22. Install remaining components. See service manual:

- a. Assemble remaining drive components.
- b. Adjust clutch.
- c. Install primary chain tensioner.
- d. Install primary chaincase cover with a **new** gasket (sold separately).
- e. Fill primary chaincase with lubricant.

COMPLETE

⚠ WARNING

Connect positive (+) battery cable first. If positive (+) cable should contact ground with negative (-) cable connected, the resulting sparks can cause a battery explosion, which could result in death or serious injury. (00068a)

1. Verify ignition/key switch is in turned OFF position.
2. Apply a light coat of Harley-Davidson electrical contact lubricant (Part No. 99861-02), petroleum jelly or corrosion retardant material to battery terminals.
3. Connect battery cables (positive cable first). See service manual.
4. Install seat. Pull up on seat to verify that it is secure. See service manual.