



INSTRUCTIONS

94100079

2026-06-11



ENGINE GUARD

GENERAL INFORMATION

Table 1. General Information

Kits	Suggested Tools	Skill Level ⁽¹⁾
49000194A	Safety Glasses, Torque Wrench	
<i>(1) Tightening to torque value or other moderate tools and techniques required</i>		

KIT CONTENTS

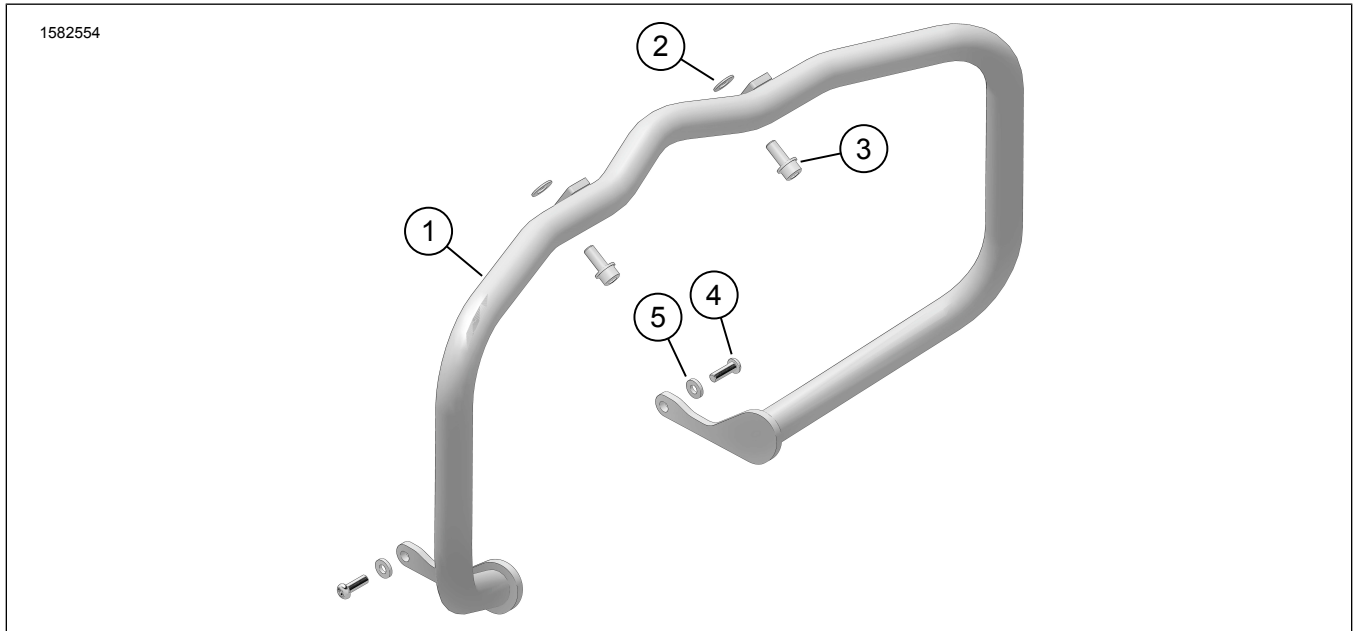


Figure 1. Kit Contents: Engine Guard

Table 2. Kit Contents: Engine Guard

<input checked="" type="checkbox"/>	Verify that all contents are present in the kit before installing or removing items from vehicle.				
Item	Qty	Description	Part No.	Notes	
<input type="checkbox"/>	1	Engine guard	Not sold separately		
<input type="checkbox"/>	2	Washer, plain, 3/8 X 13/16 X 1/16	6701		
<input type="checkbox"/>	3	Screw, socket head	4530M		
<input type="checkbox"/>	4	Screw, button head cap	10200929		
<input type="checkbox"/>	5	Washer, flat, 5/16 X 11/16 X 1/8	6109		

GENERAL

Models

For model fitment information, see the Parts and Accessories (P&A) Retail Catalog or the Parts and Accessories section of www.harley-davidson.com.

Verify that the most current version of the instruction sheet is used. It is available at: h-d.com/isheets

Contact Harley-Davidson Customer Support Center at 1-800-258-2464 (U.S. only) or 1-414-343-4056.

Installation Requirements

⚠ WARNING

Rider and passenger safety depend upon the correct installation of this kit. Use the appropriate service manual procedures. If the procedure is not within your capabilities or you do not have the correct tools, have a Harley-Davidson dealer perform the installation. Improper installation of this kit could result in death or serious injury. (00333b)

NOTE

This instruction sheet references service manual information. A service manual for the year and model motorcycle is required for this installation and is available from:

- A Harley-Davidson dealer.
- H-D Service Information Portal, a subscription-based access available for most 2001 and newer models. For more information see *Frequently ask questions about subscriptions*.

These items are available at your local Harley-Davidson dealership.

- **2022 and later Nightster models:** Separate purchase of Chin Spoiler Kit (Part No. 57200347) is required for this installation.

PREPARE

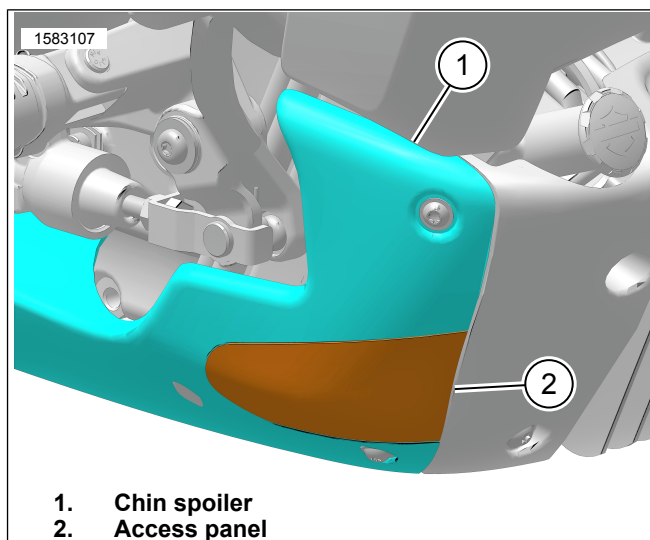
1. Figure 2 **Sportster S:** Remove right chin spoiler (1). See service manual.
 - a. Remove access panel (2).
 - b. Install right chin spoiler (1).
 - c. Repeat procedure for opposite side.

INSTALL

⚠ WARNING

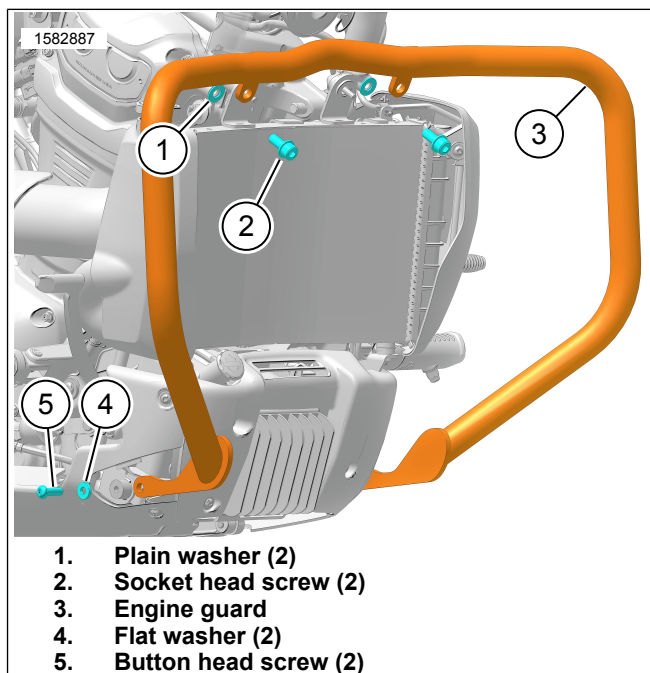
If Equipped: Front and/or rear guards are not intended to provide protection from bodily injury in a collision with another vehicle or any other object. (00022d)

1. Figure 3 Install engine guard.
 - a. Position washers (1) and engine guard (3) to vehicle frame.
 - b. Loosely install socket head screws (2).
 - c. Loosely install washers (4) and button head screws (5).
2. Tighten screws (2).
Torque: 60.5 N·m (45 ft-lbs)
3. Tighten screws (5).
Torque: 27 N·m (20 ft-lbs)



1. Chin spoiler
2. Access panel

Figure 2. Sportster S Chin Spoiler



1. Plain washer (2)
2. Socket head screw (2)
3. Engine guard
4. Flat washer (2)
5. Button head screw (2)

Figure 3. Engine Guard (Typical)