



INSTRUCTIONS

-J00136

REV. 8-12-96

Kit Numbers 45421-84, 45452-87, 45783-97, 45792-97, 45801-97, and 45802-97

SCREAMIN' EAGLE FORK BRACE KITS

General

These kits are designed for installation on 35mm or 39mm diameter forks. The following tabulations list Part No., finish and model applications:

35mm forks

Part No.	Finish	Models
45421-84	Chrome	1977 and later FX (except FXDWG and FXST), 1975 -
45783-97	Black	1987 XL, 1983 - 1984 XR-
45792-97	Polished aluminum	1000, 1982 - 1987 FXR (except FXRT, FXRD, and 1987 FXLR and FXRS-SP).

39mm forks

Part No.	Finish	Models
45452-87	Chrome	1987 FXLR and FXRS-SP,
45801-97	Black	and all 1988 and later XL,
45802-97	Polished aluminum	FXR (except FXRT), and FXD Dyna Glide models (except FXDWG).

See Service Parts list on page 2 for components in these kits.

NOTE

A Service Manual for your motorcycle is available at your Harley-Davidson Dealership.

Installation

1. See Service Parts Illustration on page 2. On all models except those equipped with 39mm forks, push the dust covers off of the sliders and up the fork tubes until out of the way. On models equipped with 39mm forks, the fork brace fits over the dust cover.

2. Using allen wrenches provided, remove screws (2) and end caps (6 and 7) from brace halves (4 and 5).

NOTE

End caps and brace halves are match marked on bottom for proper assembly.

3. Loosen screws (1), push brace halves together and insert between fork tubes. Heads of screws (1) must face towards the engine.
4. Make sure brace is down tight on fork sliders (dust covers on 39mm fork equipped models) and install end caps (6 and 7). Lightly secure end caps with screws (2).
5. Align brace halves (4 and 5) and tighten screws (1) finger tight.
6. Push down on front forks several times to seat fork brace and allow it to self-align.

CAUTION

It is very important to tighten all screws evenly and carefully to prevent binding.

7. Tighten end cap screws (2) and brace screws (1).
8. Slide dust covers down onto fork brace (except 39mm fork equipped models).

WARNING

Check for any clearance problems between fork brace and front end components such as brake hoses and cables. Check all clearances throughout the full travel range of the front suspension.

Installation of the Screamin' Eagle fork brace will increase the torsional rigidity of your motorcycle's forks which may be evidenced through faster steering response and feedback (road feel) through the handlebars.



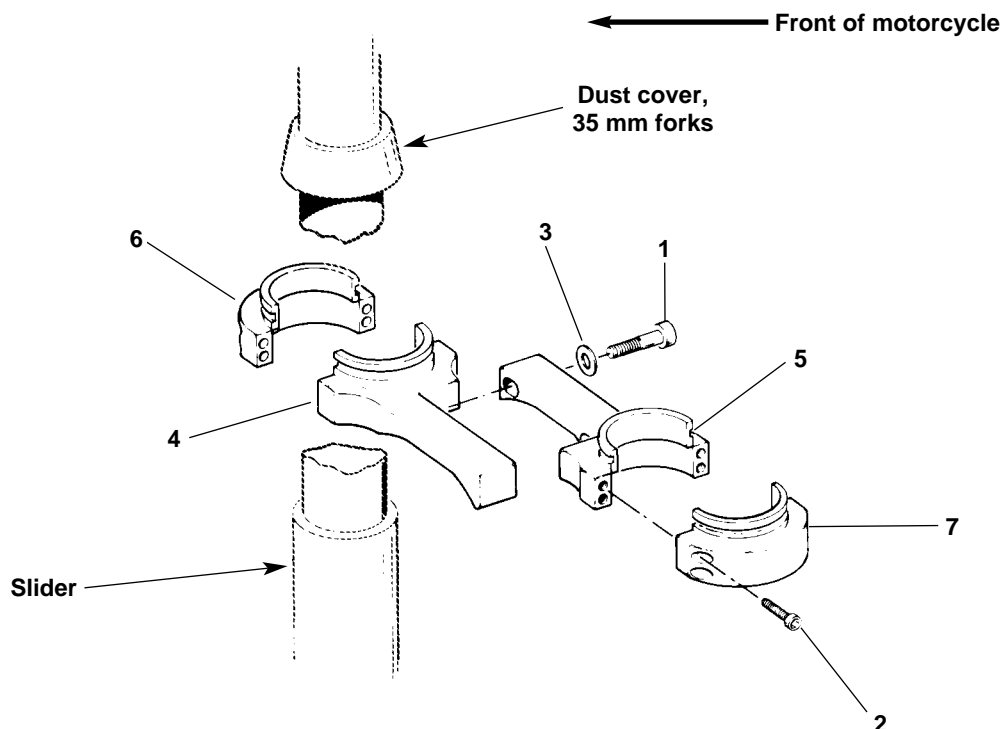
Service Parts

Part No. See below.

Date 5/96

Fork Brace

sp45421



Kit Part No. 45421-84, 45452-87 chrome finish

Item	Description	Part No.
1	Screw, socket head, M8-1.25 x 40 (2)	4060
2	Screw, socket head, M5-0.8 x 18 (8)	4073
3	Washer, flat (2)	6739
4	Front brace half	Not sold separately
5	Rear brace half	Not sold separately
6	End cap, right	Not sold separately
7	End cap, left	Not sold separately
8	Allen wrench, 4mm (not shown)	94417-87
9	Allen wrench, 6mm (not shown)	94418-87

Kit Part No. 45783-97, 45801-97 black finish

Item	Description	Part No.
1	Screw, socket head, M8-1.25 x 40 (2)	4173
2	Screw, socket head, M5-0.8 x 18 (8)	4171
3	Washer, flat (2)	6832
4 - 9	See kit 45421-84 above.	

Kit Part No. 45792-97, 45802-97 polished aluminum finish

Item	Description	Part No.
1	Screw, socket head, M8-1.25 x 40 (2)	4174
2	Screw, socket head, M5-0.8 x 18 (8)	4172
3	Washer, flat (2)	6833
4 - 9	See kit 45421-84 above.	