



# INSTRUCTIONS

-J01548

REV. 10-12-00

Kit Number 49258-00

## HERITAGE SPRINGER SOFTAIL SADDLEBAG GUARD KIT

### General

This kit is designed for installation on 2000 and later FLSTS, model motorcycles. Heritage-Style Saddlebag Bracket Relocation Kit, Part No. 90238-00, must also be or previously been installed when installing this Rear Saddlebag Guard Kit on models with factory-installed leather saddlebags.

#### WARNING

These saddlebag guards may provide limited leg and cosmetic vehicle protection under unique circumstances (fall over while stopped, very low speed slide). They are not made nor intended to provide protection from death or serious bodily injury in a collision with another vehicle or any other object.

#### WARNING

Rear saddlebag guards should not be used as load-securing devices. Using rear saddlebag guards as load securing devices could result in death or serious injury and/or damage to the vehicle and/or load.

See Service Parts Illustration for kit contents.

### Installation

#### WARNING

The rear saddlebag guards in this kit should be installed in the position and manner specified in this instruction sheet. Improper installation or placement of these saddlebag guards may result in an interference problem with rear suspension components, which could result in death or serious injury and/or damage to the vehicle.

#### NOTE

A Service Manual for your motorcycle is available from your Harley-Davidson Dealer.

1. Remove saddlebag according to Service Manual instructions.
2. Remove passenger footpeg or passenger footboard assembly (including footboard mount) from vehicle according to Service Manual instructions.
3. See Figure 1. Remove nut, flat washer, seat strap bracket (if equipped), and 3/8 in. diameter bolt from position on rear fender support (immediately to the rear of front seat) which will serve as upper mounting point of saddlebag guard. Discard bolt.
4. Install 3/8-16 x 1-1/2 in. button head cap screw through the holes in the saddlebag guard top flange, fender support and fender. Install locknut onto free end of screw inside the fender. Finger tighten only.
5. Position bottom flange of saddlebag guard against inboard surface of motorcycle frame member at point where passenger footpeg (or passenger footboard mount) attaches. The Heritage-Style Saddlebag Bracket Relocation Kit, Part No. 90238-00 should be positioned between saddlebag guard

bottom flange and motorcycle frame member. Follow installation instructions included with that kit.

#### WARNING

Footpegs must fold up at a 45° angle (from vertical) toward rear of motorcycle. This angle allows footpegs to fold up if they accidentally strike the ground surface when making a sharp turn. Failure to set footpegs to the proper fold-up angle could result in death or serious injury and/or damage to the vehicle.

6. See Service Parts Illustration. Determine your model application and follow the applicable installation procedure below:

#### NOTE

In order to install fasteners from the inside of the frame, the rear fender extension may need to be repositioned. Refer to the appropriate Service Manual for instructions.

- a. **On models with passenger footpeg and saddlebag relocation bracket:** On right hand side of motorcycle, install 3/8–16x2-3/4 in. socket head cap screw (7) through footpeg support. On left hand side of motorcycle, install 3/8–16x4in. socket head cap screw (5) through footpeg support. Install support to frame. Tighten support bolt to 35-45 Ft-lbs. (47-61 N-m). Position saddlebag relocation bracket over bolt. Install lower saddlebag guard flange over bolt protruding from the inboard surface of frame member. Install 3/8-16 locknut (4) to end of bolt. Tighten to 35-45 Ft-lbs. (47-61 N-m). Install footpeg according to Service Manual instructions.
  - b. **On models with passenger footboard with or without toolbox:** On each side of the motorcycle, install 3/8–16x2-1/4 in. socket head cap screw (6) through passenger footboard mount and toolbox bracket (if equipped). Tighten footboard mounting bolt to 35-45 Ft-lbs. (47-61 N-m). Install 3/8-16 locknut (4) to end of bolt. Tighten nut to 35-45 Ft-lbs. (47-61 N-m).
  - c. **On models with passenger footpegs and tool box:** On right hand side of motorcycle, install 3/8–16x2-1/4 in. socket head cap screw (6), from the inboard side of the motorcycle, through hole on in saddlebag guard bottom flange, saddlebag relocation bracket into the motorcycle frame member. Tighten bolt to 35-45 Ft-lbs. (47-61 N-m). Install passenger footpeg spacer to the end of the bolt. Tighten footpeg spacer to 35-45 Ft-lbs. (47-61 N-m). Install passenger footpeg support to end of footpeg spacer. Tighten to 35-45 Ft-lbs. (47-61 N-m). Install footpeg according to Service Manual instructions. For the left hand side of the motorcycle, refer to instructions for models not equipped with tool box (Step 6B).
7. Final tighten nut that secures saddlebag guard top flange. (see Step 4) to 21-27 Ft-lbs. (28-37 N-m.). Reinstall saddlebag, if equipped, to motorcycle. If not already connected, attach loose end of the lower leg of the saddlebag support with the fasteners from the relocation bracket kit. Tighten locknut to 17-19 Ft-lbs. (23-26 N-m). Repeat steps 1-7 for installing saddlebag guard on the opposite side of motorcycle.
  8. Discard remaining original and kit mounting hardware.

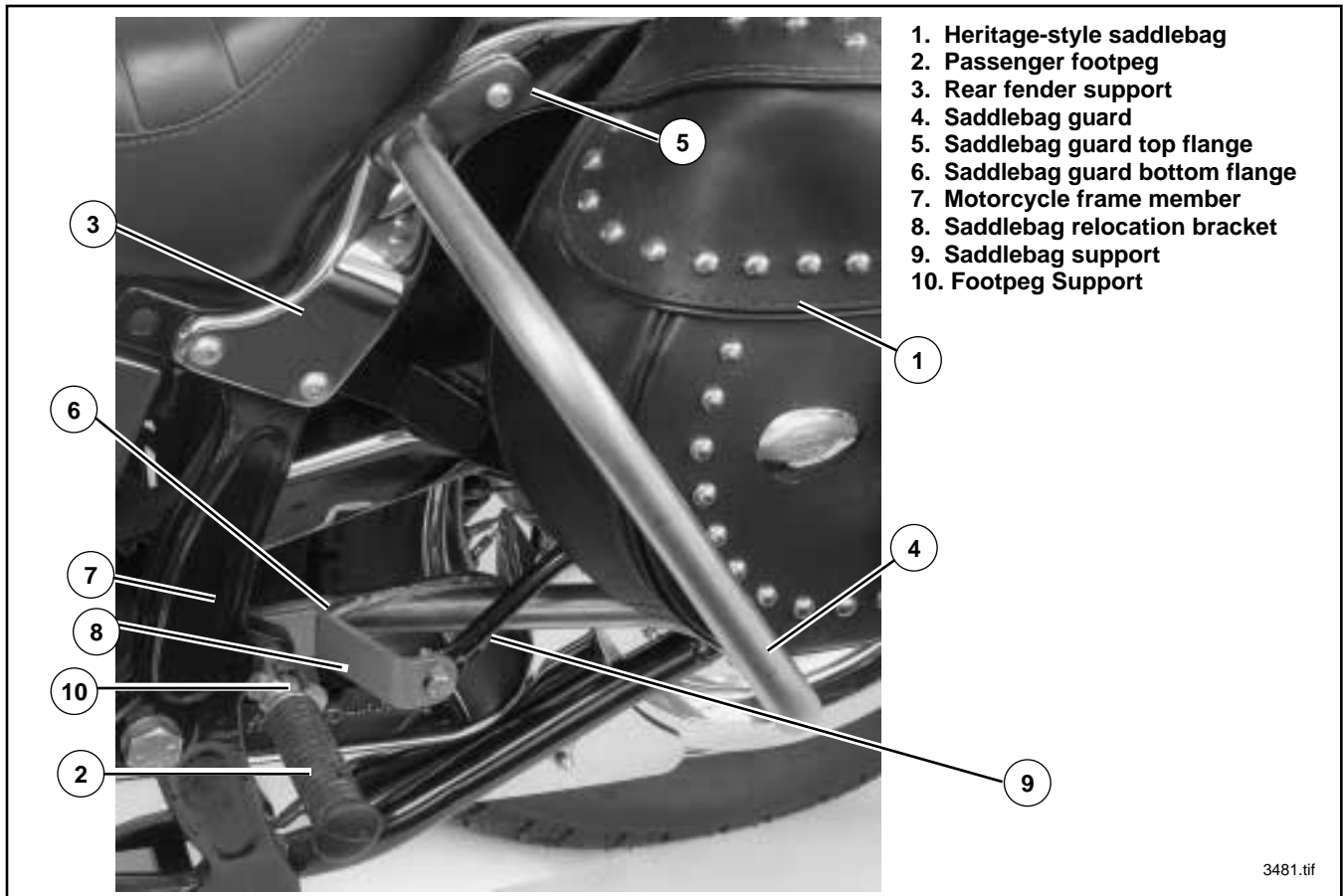


Figure 1. Rear Saddlebag Guard Installed-Left Side



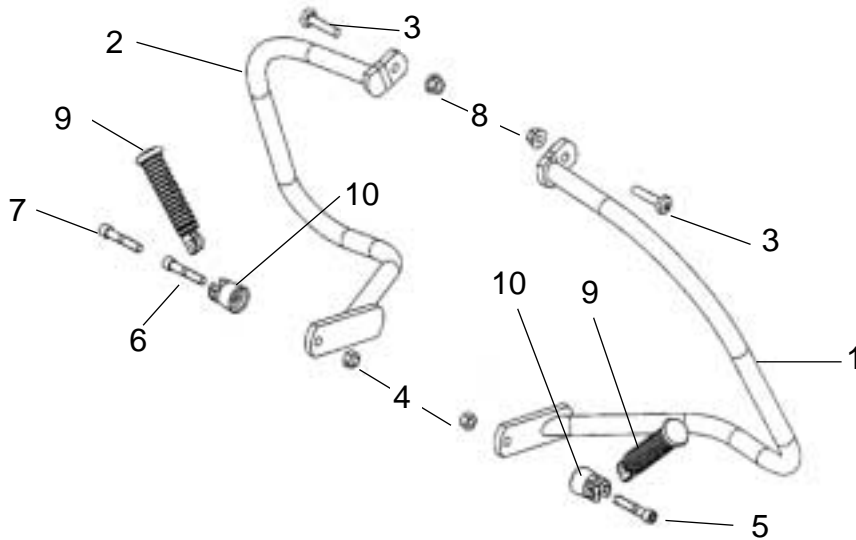
# Service Parts

Part No. 49258-00

Date 10/00

Softail Rear Saddlebag Guard

sp49258-00A.eps



| Item | Description                 | Part No. | Item | Description                              | Part No. |
|------|-----------------------------|----------|------|--|----------|
| 1    | Saddlebag Guard, left       | 49260-00 | 6    | Screw, socket head, 2-1/4" long (2)      | 4201     |
| 2    | Saddlebag Guard, right      | 49259-00 | 7    | Screw, socket head, 2-3/4" long          | 4209     |
| 3    | Screw button head (2)       | 4127     | 8    | Original equipment (2)                   |          |
| 4    | Locknut (2)                 | 7778     | 9    | Original equipment (footpeg) (2)         |          |
| 5    | Screw, socket head, 4" long | 4202     | 10   | Original equipment (footpeg support) (2) |          |