

-J02118

Kit Number 57720-01Y and 57775-01Y

REV. 3-12-2001

BUELL BLAST WINDSHIELD KIT

General

This kit is designed to fit 2000 and later Buell Blast Model Motorcycles.

Kit 57720-01Y consists of windshield with lower silver mask.
Kit 57775-01Y consists of windshield with lower black mask.

See *Service Parts Illustration* for kit contents.

NOTE

A *Service Manual* is available at your Harley-Davidson, Buell Dealer.

Installation

1. See Figure 1. Remove four screws and plastic washers securing (OE) original equipment headlamp visor. Retain two screws and two washers for installation.

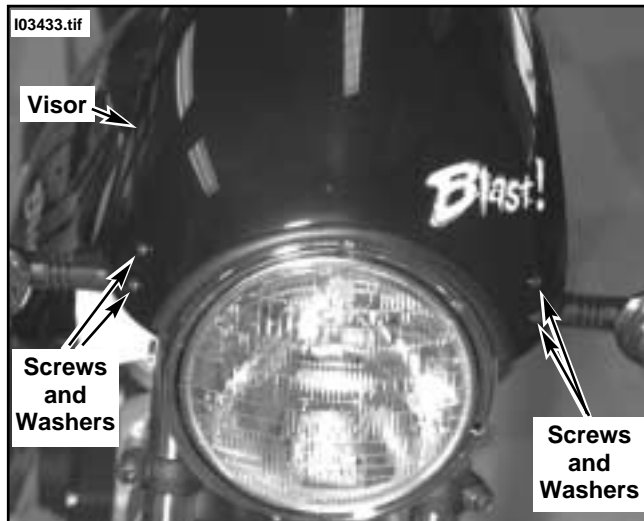


Figure 1. Headlamp Visor Hardware

2. See Figure 2. Remove the two upper well nuts from each of the mounting brackets but leave lower well nuts in place.

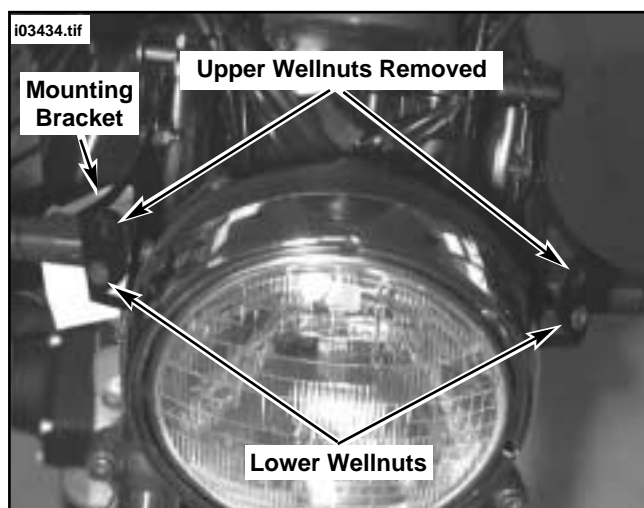


Figure 2. Remove Upper Wellnuts

3. See Figure 3. On right side of vehicle, remove the two socket head cap screws securing the headlamp mounting bracket to the fork tube. Discard screws.

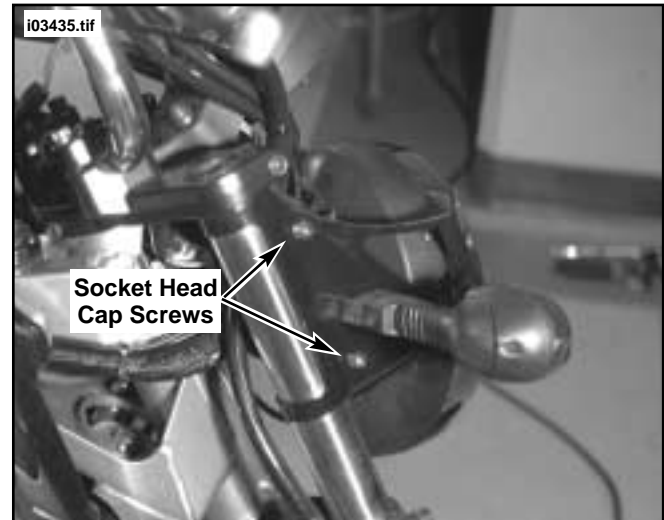


Figure 3. Remove and Discard Socket Head Screws

4. See Figure 4 and Service Parts Illustration. Obtain the right windshield support and two 1/4-20x1.25 inch socket head cap screws (item 7) from kit. Use screws and install the right side windshield support to the headlamp mount. At this point, just snug screws. Screws will be tightened after windshield alignment is made.

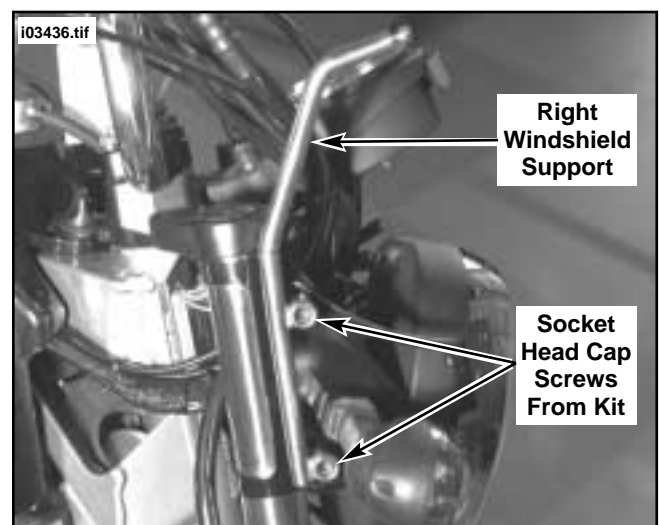


Figure 4. Install Right Windshield Support

5. Repeat Steps 3 and 4 for the left side of vehicle.

- See Figure 5. Using two screws and two washers saved in Step 1, insert screws through plastic washers, windshield and rubber washers (Item 8d) and into lower wellnuts. At this point, just snug screws.

NOTE

Rubber washer (Item 8d) will be between the windshield and the lower mounting bracket.

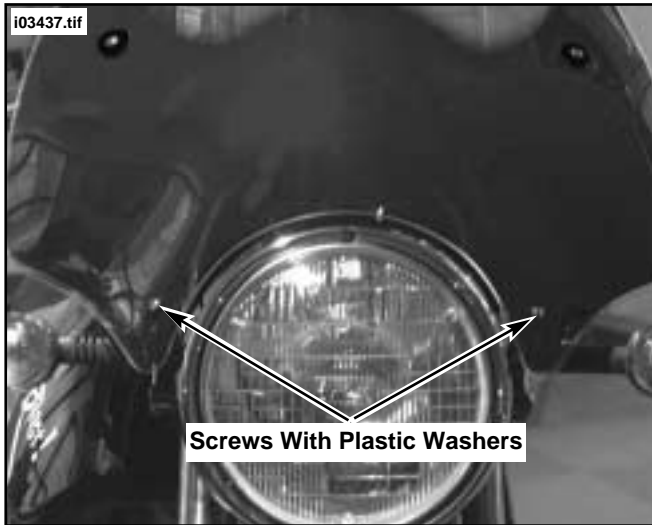


Figure 5. Install Windshield Lower Mount Screws

- See Figure 6. Align the snap mounts on the windshield with the ball-end portions of the windshield supports and snap ball-ends to mounts.

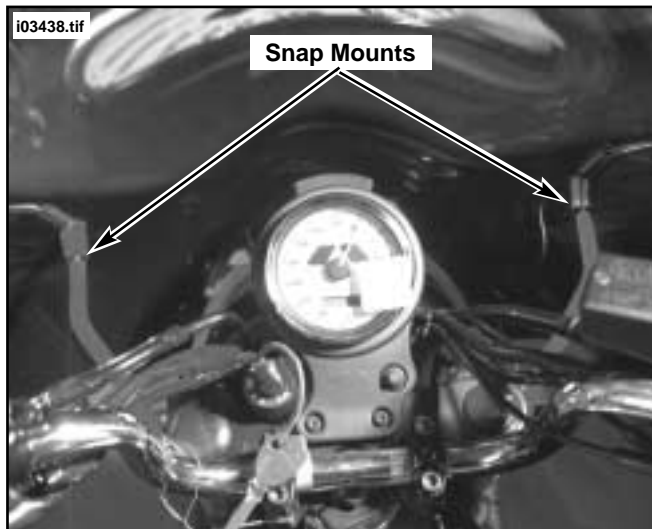


Figure 6. Align and Install Windshield Supports to Snap Mounts

- Stand in front of the vehicle and check windshield for proper alignment. Note space around headlamp. Adjust the headlamp mounting brackets to the left or right to improve alignment.

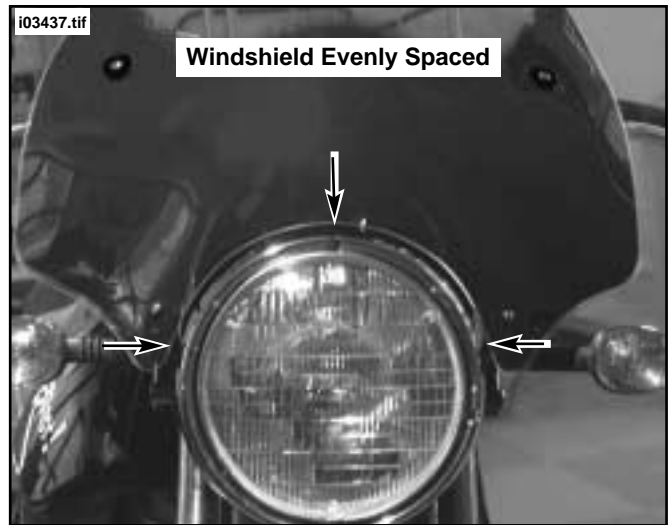


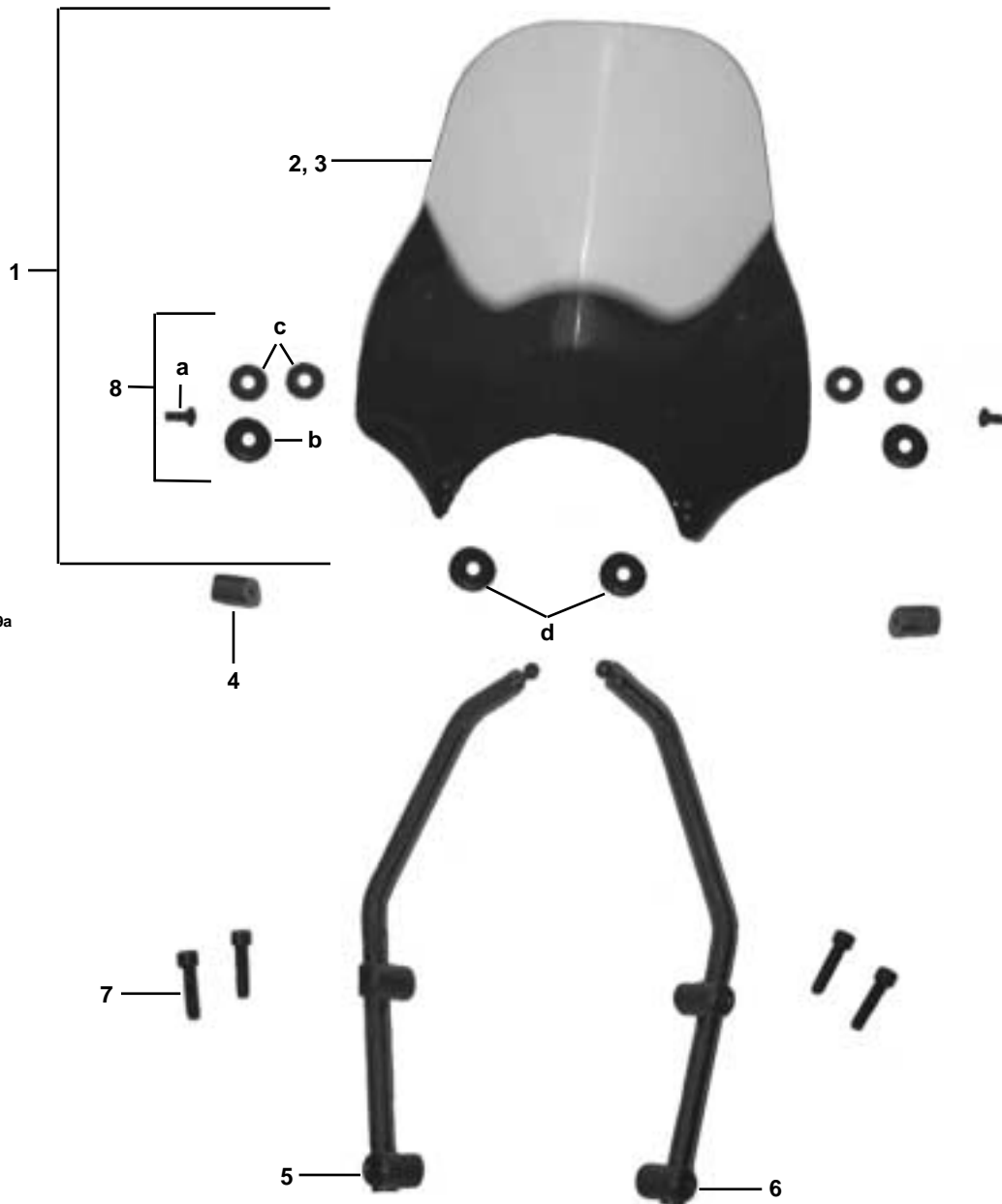
Figure 7. Align Windshield

- When properly aligned, tighten the left and right side mounting bracket screws to 7-9 ft-lbs (10-12 Nm).
- Tighten the lower windshield mounting screws (installed in Step 6) securely.

Buell Blast Windshield Kit

i03438.tif

i03440.tif



i03439a

57220-01Y and 57775-01Y

Item	Description/Qty	Part Number
1	Assembly, windshield	Not sold
2	Replacement, windshield (silver) (Kit 57720-01Y)	57104-01Y
3	Replacement, windshield (black) (Kit 57775-01Y)	57103-01Y
4	Assembly, snap mount (2)	57033-01Y
5	Support, left windshield mounting	57059-01Y
6	Support, right windshield mounting	57058-01Y
7	Screw, mounting 1/4-20x1.25 inch (4)	3601
8	Kit, upper mount hardware	57056-01Y
	Hardware Kit consists of:	
a	Screws (2)	
b	Washers, black (2)	
c	Washers, rubber (4)	
d	Washers, rubber (2)	