



INSTRUCTIONS

-J02477

REV. 6-6-03

Kit Number 90224-03BDK

FLSTC SOFTAIL SADDLEBAG KIT

General

This saddlebag kit is designed to fit 1987 and later FLSTC model motorcycles. This kit will not fit bikes equipped with the following accessories:

Item	Part Number
Chrome 3-channel luggage rack w/handrail	53831-00
Chrome 3-channel luggage rack w/handrail	53465-87B
Chrome 3 channel luggage rack/fender rack	53461-90
Chrome rear dresser bars	49158-89D

Additional Fitment Information

Detachables

NOTE

If motorcycle has not been altered from fixed saddlebag hardware to accessory mounting detachable docking points, the separate purchase of Turn Signal Mounting Bar (Part Number 68611-98) is required for sufficient lock clearance. This kit is available at your Harley-Davidson Dealer.

Installing these saddlebags on models equipped with a detachable sissy bar or detachable luggage rack requires the additional purchase of mounting hardware kit as follows:

Hardware Kit	Fitment
53075-03	2003 and later FLSTC models with detachables
53009-03	1987 through 2002 FLSTC models with detachables

See Service Parts Page for kit contents.

WARNING

Additional weight can affect motorcycle stability, handling characteristics, and safe operating speed. Do not exceed 7 lbs. (3.18Kg) maximum load in each saddlebag. Evenly distribute weight between each saddlebag. Improper loading can cause vehicle handling problems leading to death or serious injury.

Wide Tire

If a wide tire kit has been installed, utilize the hardware and installation instructions found in that kit to reorient the fasteners to come from the inside to the outside of the fender.

WARNING

Button head screws from wide tire kit must be installed from the inside out, with the button heads on the inside of the fender. Failure to do so could result in bolt contacting tire, which could result in death or serious injury.

Installation

NOTE

A Service Manual for your vehicle is available at your Harley-Davidson Dealer.

1. Remove seat.

WARNING

To prevent accidental vehicle start-up, which could cause death or serious injury, disconnect battery cables (negative cable first) before proceeding. (00048a)

WARNING

Disconnect the negative (-) battery cable first. If positive (+) cable should contact ground with the negative (-) cable connected, the resulting sparks may cause a battery explosion which could result in death or serious injury. (00049a)

2. Disconnect battery cables, negative cable first.
3. Following instructions in applicable Service Manual, remove original saddlebags from supports.

Install Turn Signal Mounting Bar

If motorcycle is not equipped with accessory mounting detachable docking points, install Turn Signal Mounting Bar (Part No. 68611-98) following instructions provided with the kit. See Figure 1.

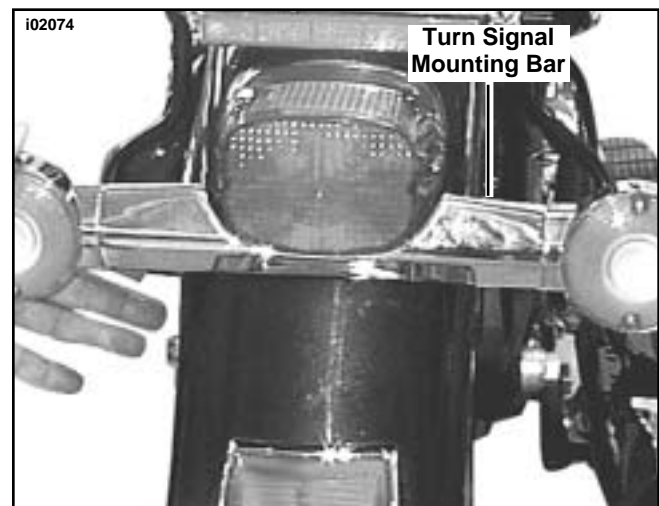


Figure 1. Turn Signal Mounting Bar (Not Included)

Remove Existing Saddlebag Supports

- Following instructions in applicable Service Manual, remove rear fender extension/splash guard to provide adequate access for installing bracket hardware.
- See Figure 2. Remove upper saddlebag support hardware from fender strut.
- On 2000 and later models**, remove nut from bolt running through passenger footpeg and remove footpeg. Save parts of re-installation.
- On 1987 to 1999 models** See Figure 3. Remove footpeg mount and support hardware by removing bolt and washer (from inside frame). Discard existing support hardware.
- On 2000 and later models** See Figure 3. Remove footpeg mount by removing bolt (running through footpeg mount). Discard existing support hardware.
- Repeat Steps 5 through 8 for the opposite side.

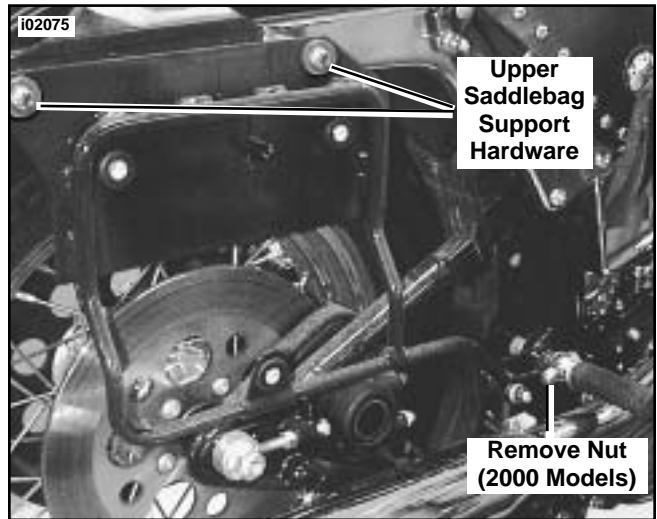


Figure 2. Remove Saddlebag Support from Fender Strut

Install Saddlebag Supports

NOTE

On 1997-1999 models, if Wide Tire Kit is installed, refer to Instruction Sheet provided with Wide Tire Hardware Kit (Part No. 90299-00).

NOTE

Select the correct hardware to complete the next steps.

When installing these saddlebags without detachables select the correct screw provided in the saddlebag kit:

2003 and later models- 3/8"-16 x 1 3/8 inch socket head screws (Part Number 1002)

1990 to 2002 models- 3/8"-16 x 1 5/8 inch socket head screws (Part Number 4371WA)

When installing these saddlebags with detachables select the correct screw provided in the hardware kit:

2003 and later FLSTC models-3/8"-16 x 2 1/4 (Part Number 53075-03)

1990 to 2002 FLSTC models-3/8"-16 x 2 1/2 (Part Number 53009-03)

WARNING

Do not use the 2 1/2 inch screws if docking hardware is not present. Tire damage could occur which could lead to an accident which could result in death or serious injury.

- See Figure 4. Install saddlebag support to strut and fender as shown using two socket head screws and:
 - 1990 to 2002 models** use flange nuts (Part Number 7601) provided in this kit
 - 2003 and later models** re-use the original stud plate from the vehicle.
- Tighten fasteners to 27 ft-lbs. (37 Nm)

- Repeat Step 9 for the opposite side.

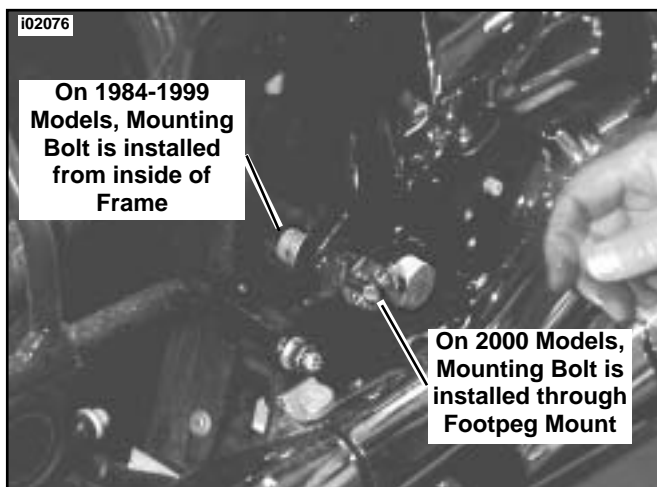


Figure 3. Remove Passenger Footpegs and Existing Saddlebag Supports

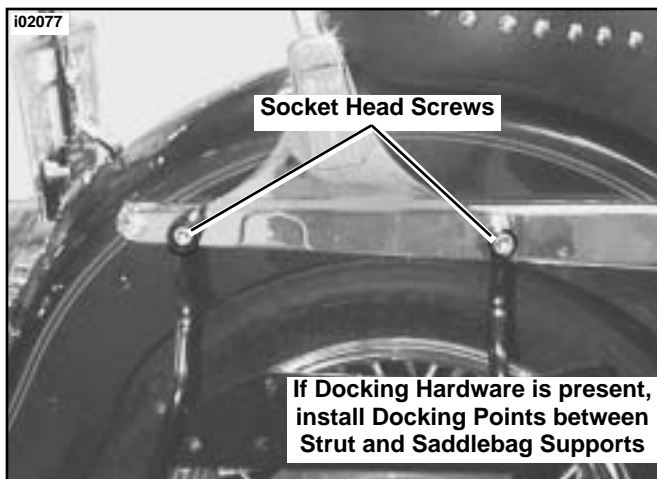


Figure 4. Install Saddlebag Support Screws

Install Front Support Brackets

11. **On 1987 to 1999 models**, perform the following:
 - a. See Figure 5. Obtain 1/2x13x1-1/2 inch socket head bolt (Part Number 3549A) and insert through support bracket, then through frame (from inside).
 - b. Install footpeg mount to bolt and finger tighten.
 - c. Repeat Steps a and b for the opposite side. Proceed to Step 13.
12. **On 2000 and later models**, perform the following:
 - a. See Figure 6. Obtain 3/8x16x2-1/4 inch socket head bolt (Part Number 4029A) and install through footpeg mount, thread completely into frame and tighten to 25-30 ft-lbs (34-41 Nm). Threads should be exposed approximately 1/2 inch on inner side of frame.
 - b. Install bracket onto bolt, then install “shouldered” washer (Part Number 5816) with shoulder oriented toward bracket. Install nut (Part Number 7601) to bolt and finger tighten.
 - c. Repeat Steps a and b for the opposite side.

Install Brackets to Saddlebag Supports

NOTE

See Figure 7. If docking hardware was installed, use the inner two holes to mount the support bracket to the saddlebag support. If docking hardware has not been installed, use the outer two holes.

13. See Figure 7. Install two screws (Part Number 3540) through saddlebag support and into support bracket as shown. Install nuts (Part Number 7739). Tighten to 10 ft-lbs (13.1 Nm).
14. Return to the frame end of the bracket and perform the following:

On 1987-1999 models, align and tighten footpeg mount bolt to 78 ft-lbs (106 Nm).

On 2000 and later models, align footpeg mount and tighten nut (from inside frame) to 45-50.ft-lbs (61-68 Nm). Install footpeg to footpeg mount using original bolt, wave washer and nut. Tighten nut to 25-30 ft-lbs (34-41 Nm).
15. Perform Steps 13 and 14 for the opposite side.
16. Refer to the applicable Service Manual and install new fender extension/splash guard.

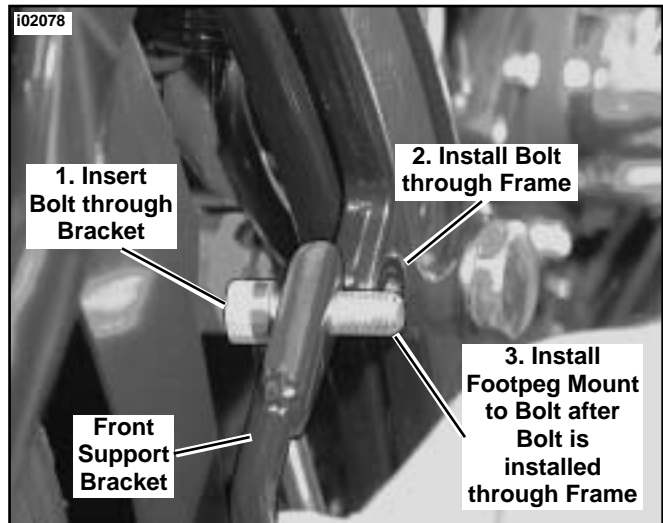


Figure 5. Saddlebag Support Bracket (1987-1999 Models)

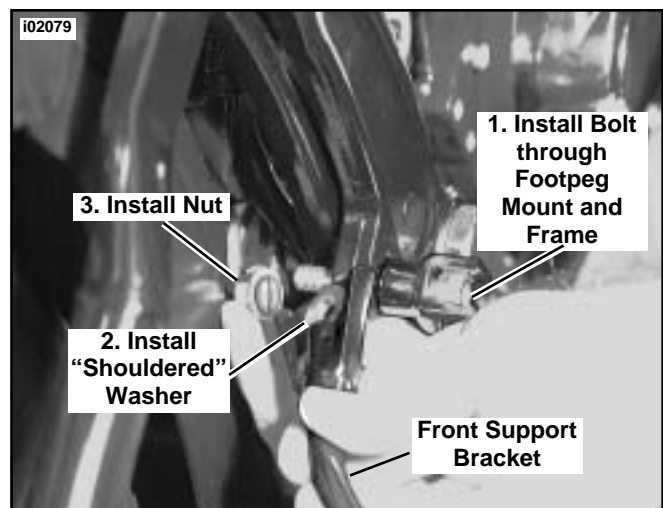


Figure 6. Saddlebag Support Bracket (2000 and later Models)

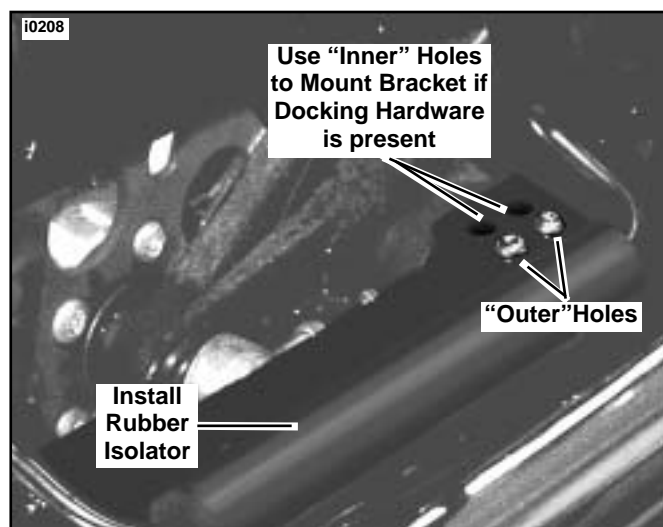


Figure 7. Install Support Bracket

Prepare Saddlebags for Installation

17. See Figure 7. Install rubber isolator over support bracket with “flat” side facing down.
18. See Figure 8. Install rubber grommets (Part Number 90148-00) into holes in side of saddlebag as shown.
19. Install a steel sleeve (Part Number 90186-00) into each of the grommets as shown.
20. Repeat Steps 17 through 19 for the opposite saddlebag.

Install Saddlebags To Supports

21. See Figure 9. Hold saddlebag up to support and locate spacer (Part Number 90175-00) between saddlebag and support.
22. See Figure 10. Install screw (Part Number 4214) and washer (Part Number 6213) from inside saddlebag, through spacer and support, then install nut (Part Number 7739). Finger tighten.
23. Perform procedure 22 for the remaining hole in saddlebag and support.
24. Make sure saddlebag is aligned properly and tighten screws and nuts securely.
25. Perform procedures 21 through 24 for the opposite saddlebag.

Install Reflectors to Saddlebags

WARNING

Federal Motor Vehicle Safety Standard (FMVSS) 108 requires all motorcycles to be equipped with side reflectors. Install, or have Dealer install, the reflectors supplied with this kit. Loss of visibility to other motorists could result in an accident and death or serious injury.

26. See Figure 11. Locate area approximately 7 inches (178 mm) from front and 1/4 inch (6 mm) from lid lip of lower section of saddlebag.
27. Using isopropyl alcohol, thoroughly clean the area in which reflector is to be installed. Let dry completely. Remove adhesive backing and install reflector. Repeat for opposite saddlebag. Let adhesive cure for 24 hours.

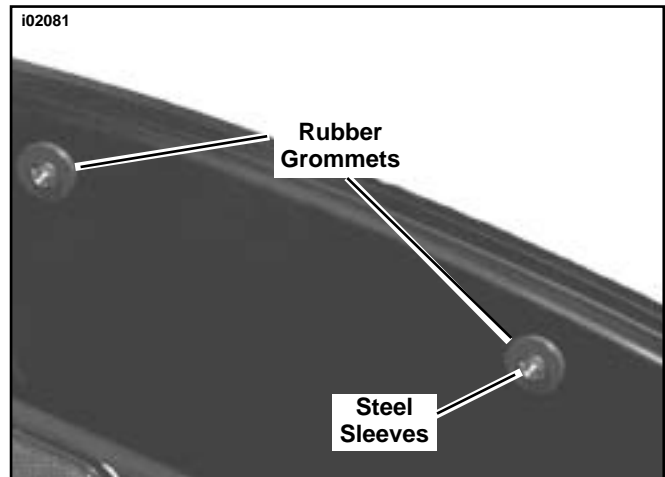


Figure 8. Install Grommets and Sleeves

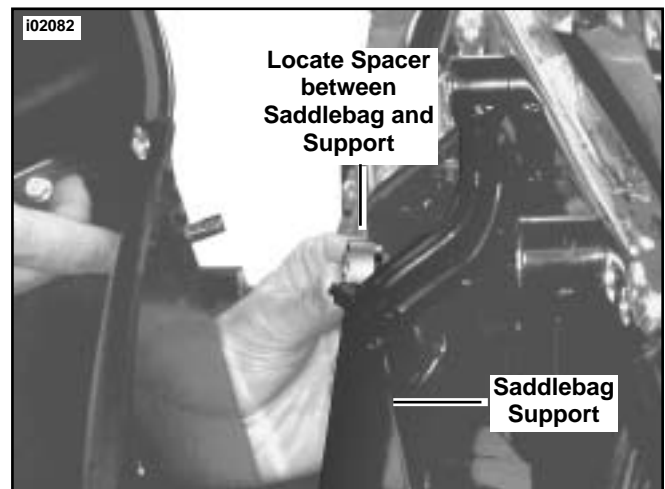


Figure 9. Install Spacers

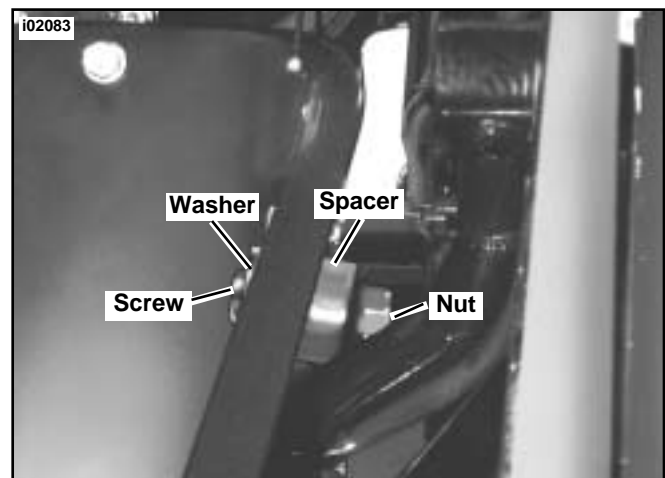


Figure 10. Secure Saddlebag to Support

Hinge Replacement (Optional)

NOTE

Saddlebags are shipped with hinge and tether for raising and lowering lid. However, due to the style of seat or accessories installed, it may be preferable to replace existing hinge with optional hinge provided in kit which allows complete removal of lid. If hinge replacement is desired, perform the following:

28. See Figure 12. Remove screw securing upper portion of tether to saddlebag lid. Remove screw securing lower portion of tether to saddlebag body. Remove tether.
29. See Figure 13. Remove C-clip securing hinge pin and remove pin from hinge. Separate lid from saddlebag body.
30. Remove two screws securing hinge to saddlebag lid and carefully slide hinge out from under rubber seal.
31. Obtain replacement hinge half for saddlebag lid. Carefully slide hinge under rubber seal and fasten hinge half to lid using screws removed in Step 30. Tighten screws securely.
32. Install original pin to hinge and secure with C-clip removed in Step 29.
33. Install lid to saddlebag body by aligning hinge halves and close lid. Pull up on front of lid to make sure lid is fastened securely.

WARNING

Connect positive (+) battery cable first. If positive (+) cable should contact ground with negative (-) cable connected, the resulting sparks can cause a battery explosion, which could result in death or serious injury. (00069a)

34. Connect battery cables, positive cable first.

WARNING

After installing seat, pull upward on front of seat to be sure it is in locked position. While riding, a loose seat can shift causing loss of control, which could result in death or serious injury. (00070a)

35. Install seat.

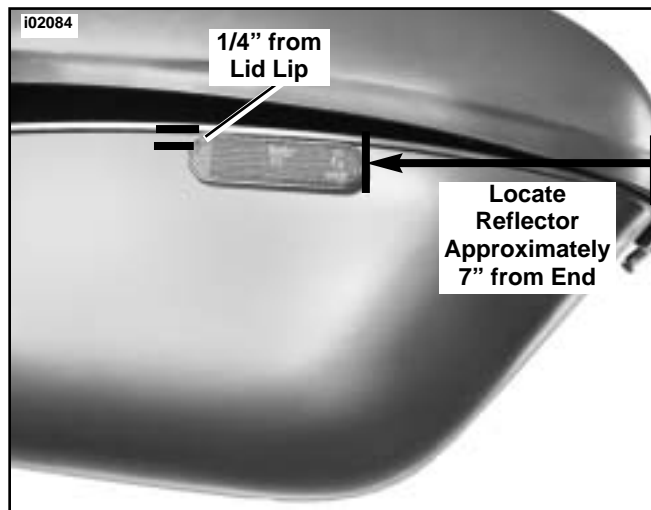


Figure 11. Install Reflectors to Saddlebags

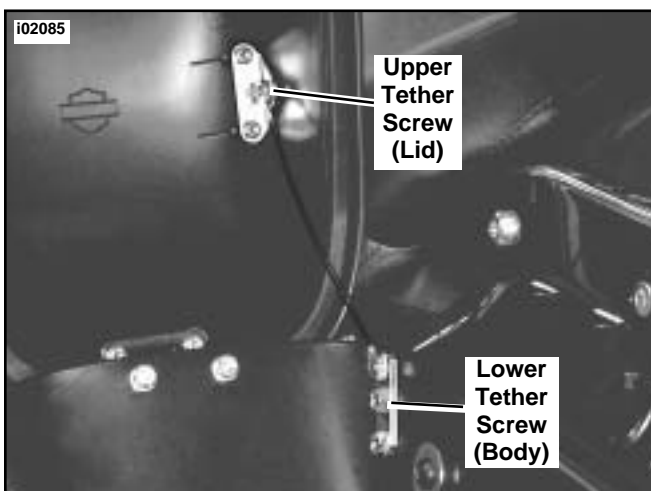


Figure 12. Remove Tether

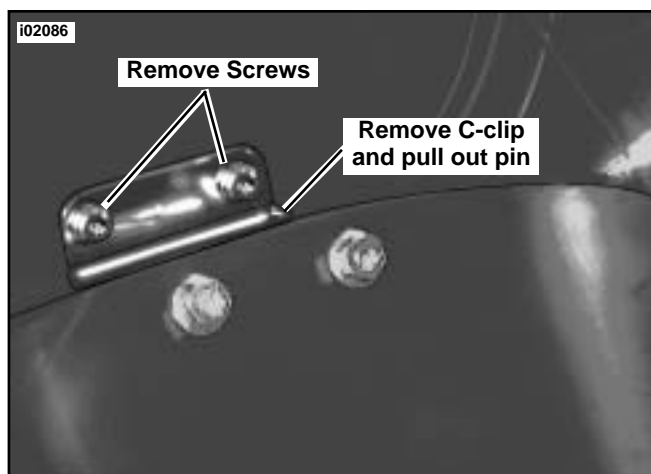


Figure 13. Remove Hinge



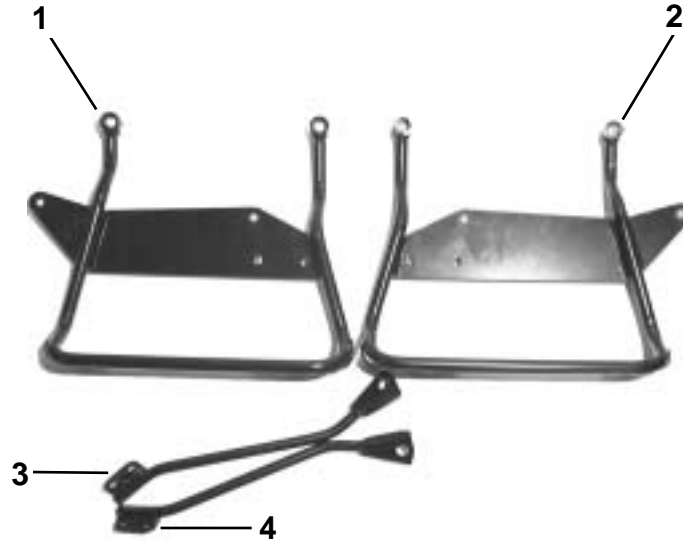
Service Parts

Part No. 90224-03BDK

Date 6/03

FLSTC Softail Saddlebag Kit

i04883



Subassembly (Part Number 90226-00)

Item	Description	Part Number
1	Support (left hand)	90177-00
2	Support (right hand)	90160-00
3	Support, forward (left hand)	90412-00
4	Support, forward (right hand)	90413-00



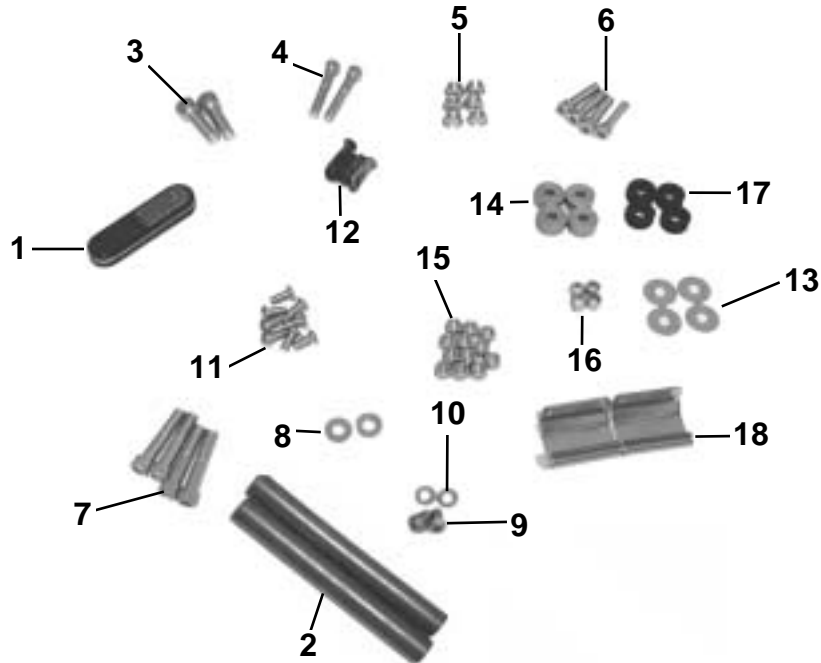
Service Parts

Part No. 90224-03BDK

Date 6/03

FLSTC Softail Saddlebag Kit

i04882

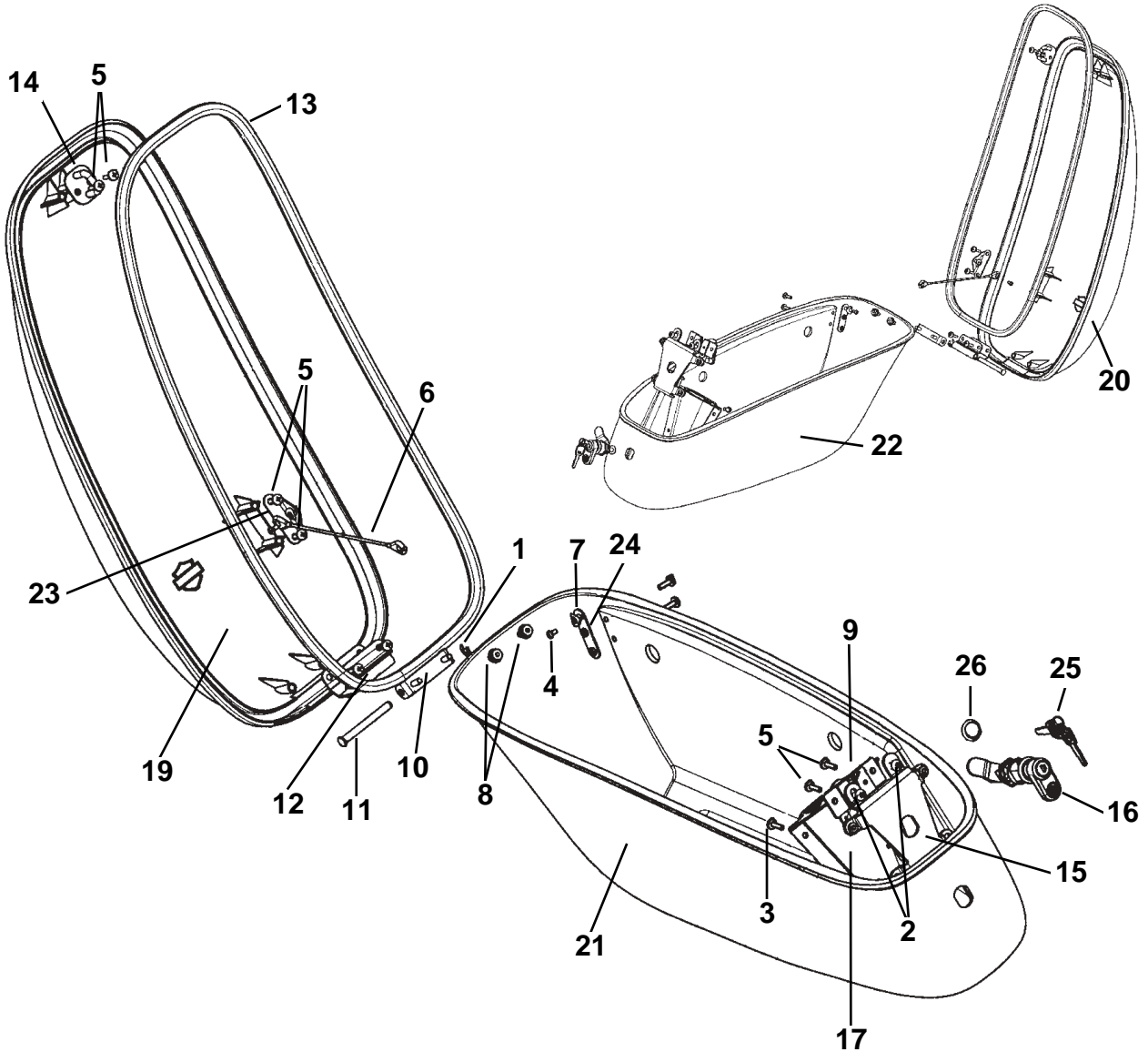


Subassembly Part Number 90052-03

Item	Description/Qty.	Part Number	Item	Description/Qty.	Part Number
1	Reflector, red (2)	59173-00	12	Screw, bag mount 5/16-18x1-3/8(4)	4214
2	Isolator, rubber (2)	90267-00	13	Washer, bag mount (4)	6213
3	Bolt, soc head, 1/2-13x1-1/2 (2)	3549A	14	Spacer, bag mount (4)	90175-00
4	Bolt, soc head, 3/8-16x2-1/4 (2)	4029A	15	Locknut, 5/16-18 (12)	7739
5	Locknut, flange 3/8-16 (6)	7601	16	Sleeve, steel (4)	90186-00
6	Bolt, soc head 3/8-16x1-5/8 (4)	4371WA	17	Grommet, rubber (4)	90148-00
7	Bolt, soc head 3/8-16x1-3/8 (4)	1002	18	Hinge, open (2)	90229-00
8	Washer, shoulder (2)	5816	<i>Items not shown:</i>		
9	Screw, 5/16-24x1/2 (2)	3538		Spacer	65849-01
10	Washer, lock (2)	7041		Bolt, soc head 3/8-16x4 (1)	4202
11	Screw, 5/16-18x5/8 (8)	3540		Bolt soc head 5/16-18x3/4 (2)	4092



i05250



Saddlebag Assembly

Item	Description/Qty.	Part Number	Item	Description/Qty.	Part Number
1	Retaining ring	11015	14	Loop latch	90231-00
2	Screw, M6-6H (2)	1394	15	Bracket, latch	90232-00
3	Screw, 10-24x3/8 (6)	3018	16	Lockset, saddlebag	90235-00
4	Machine screw, panhead (2)	3595	17	Cover, latch assy	90237-00
5	Screw, hi-lo (8)	3596	18	Label, saddlebag (not shown)	Not sold
6	Tether	53633-00	19	Lid, saddlebag (left)	90261-00
7	Washer, spring curved (2)	6970	20	Lid, saddlebag (right)	90260-00
8	Nut, flanged (2)	7878	21	Body, saddlebag (left)	90264-00
9	Assy, latch	90166-00	22	Body, saddlebag (right)	90262-00
10	Catch, hinge	90172-00	23	Bracket, upper tether	90417-00
11	Pin	90173-00	24	Bracket, lower tether	90418-00
12	Hinge, hook bracket	90176-00	25	Key set, (specify code)	90234-00
13	Gasket	90230-00	26	Gasket, lock (2)	90290-02