



INSTRUCTIONS

-J02634

REV. 02-28-2003

Kit Number 62169-95C

VACUUM OPERATED FUEL SUPPLY VALVE KIT

General

This kit fits all 1995 through 2001 XL model motorcycles.

This kit contains the following items:

QTY	DESCRIPTION	PART NO.
1	Valve, Fuel	62169-02
1	Gasket, Fuel Valve	62172-02
1	Fitting, Fuel Valve	62161-02
1	Filter, Fuel Valve	62166-02

NOTE

To prevent the possibility of fuel leakage, the hose clamp **MUST** be discarded and replaced each time it is removed.

A replacement clamp, part number 10014 and HOSE CLAMP PLIERS (Part Number HD-97087-65B) are available separately from your Harley-Davidson Dealer.

⚠ WARNING

A Service Manual is required to install this kit. The rider's safety depends upon the correct installation of this kit. If the procedure is not within your capabilities or you do not have the correct tools, have your Harley-Davidson dealer perform the installation. Improper installation of this kit could result in death or serious injury.

NOTE

A Service Manual for your model motorcycle is available from your Harley-Davidson dealer.

Installation

Removing the Old Fuel Supply Valve

⚠ WARNING

To prevent accidental vehicle start-up, which could cause death or serious injury, disconnect battery cables (negative cable first) before proceeding. (00048a)

⚠ WARNING

Disconnect negative (-) battery cable first. If positive (+) cable should contact ground with negative (-) cable connected, the resulting sparks can cause a battery explosion, which could result in death or serious injury. (00049a)

1. Refer to the Service Manual and follow the instructions given to remove the seat and disconnect the battery cables, negative cable first.

⚠ WARNING

Do not smoke or allow open flame or sparks near gasoline. Gasoline is extremely flammable and highly explosive, which could result in death or serious injury.

i04998a

1. Fuel Valve
2. Gasket
3. Fitting
4. Filter
5. Hose Clamp
6. Fuel Hose
7. Vacuum Hose

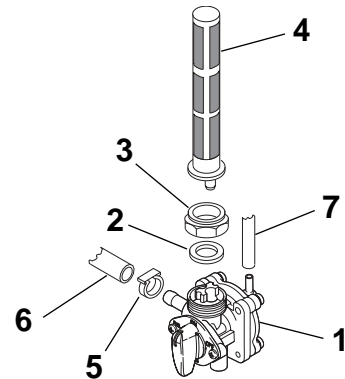


Figure 1. Fuel Supply Valve

2. Turn the fuel supply valve handle to the "OFF" position.
3. See Figure 1. Remove the fuel hose (6) from the fuel outlet nipple on the valve. Discard the hose clamp (5).
4. Remove the vacuum hose (7) from the nipple on the valve.
5. Attach a length of fuel hose onto the fuel outlet nipple and route the hose into a clean, approved gasoline container.
6. Turn the fuel supply valve handle to the "RES" position.
7. Using the appropriate hose adapter, connect a PLASTIC MITY-VAC® HAND PUMP (Part Number HD-23738-A) to the vacuum nipple on the valve.
8. Gently apply a vacuum of 1 to 10 inches of Mercury (Hg), or just enough to get a good flow of gasoline draining into the container.

⚠ WARNING

Gasoline is extremely flammable and highly explosive. Even with the fuel tank completely drained, a small amount of gasoline may leak from the bore when the fuel supply valve is loosened or removed. Thoroughly wipe up any spilled fuel immediately, and dispose of rags in a suitable manner. Inadequate safety precautions could result in death or serious injury.

9. After the tank has completely drained, turn the fitting (3) that attaches the valve to the fuel tank counterclockwise to remove the valve (1), gasket (2) and filter (4). Discard these items.

Installing the New Fuel Supply Valve

1. Coat the threads on the new fuel supply valve with LOCTITE PIPE SEALANT WITH TEFLON or equivalent.
2. Place the new gasket from the kit onto the valve mounting surface, and install the new fuel filter onto the valve.

⚠ WARNING

Do not thread the valve into the fitting more than two turns to avoid “bottoming” the fitting on the valve. This could cause a gasoline leak, creating a fire hazard, which could result in death or serious injury.

3. See Figure 2. Attach the fuel supply valve to the tank in this sequence.
 - a. Thread the new fuel valve fitting (3) from the kit onto the right-hand threads of the fuel tank adapter for two turns.
 - b. Hold the fuel valve fitting, and thread the new fuel supply valve into the left-hand threads of the fitting for two turns.
 - c. Hold the valve and tighten the fuel valve fitting clockwise to 15-20 ft-lbs (20.3-27.1 Nm).
4. Using a **new** hose clamp and HOSE CLAMP PLIERS (Part Number HD-97087-65B), connect the fuel hose to the fuel outlet nipple on the valve.

CAUTION

Do not allow dirt or fluids to get into the vacuum hose assembly that connects the fuel valve to the carburetor. Contaminants could block the vacuum signal or inhibit free motion of moving parts, which could cause the fuel valve to remain open.

NOTE

If the vacuum line is connected to the atmosphere vent nipple (at the bottom of the valve) the valve will not open.

5. Connect the vacuum hose to the vacuum nipple on the valve.

⚠ WARNING

Do not smoke or allow open flame or sparks near gasoline. Gasoline is extremely flammable and highly explosive, which could result in death or serious injury.

6. Fill the fuel tank with gasoline, and check to ensure that there are no fuel leaks or seepage.

⚠ WARNING

Connect positive (+) battery cable first. If positive (+) cable should contact ground with negative (-) cable connected, the resulting sparks can cause a battery explosion, which could result in death or serious injury. (00068a)

7. Connect the battery cables, positive cable first.

⚠ WARNING

After installing seat, pull upward on front of seat to be sure it is in locked position. While riding, a loose seat can shift causing loss of control, which could result in death or serious injury. (00070a)

8. Refer to the Service Manual, and follow instructions to install the seat.

NOTE

No special procedures are required to start fuel flow.

9. Turn the fuel supply valve handle to the “ON” position and start the engine. Check for fuel leaks.

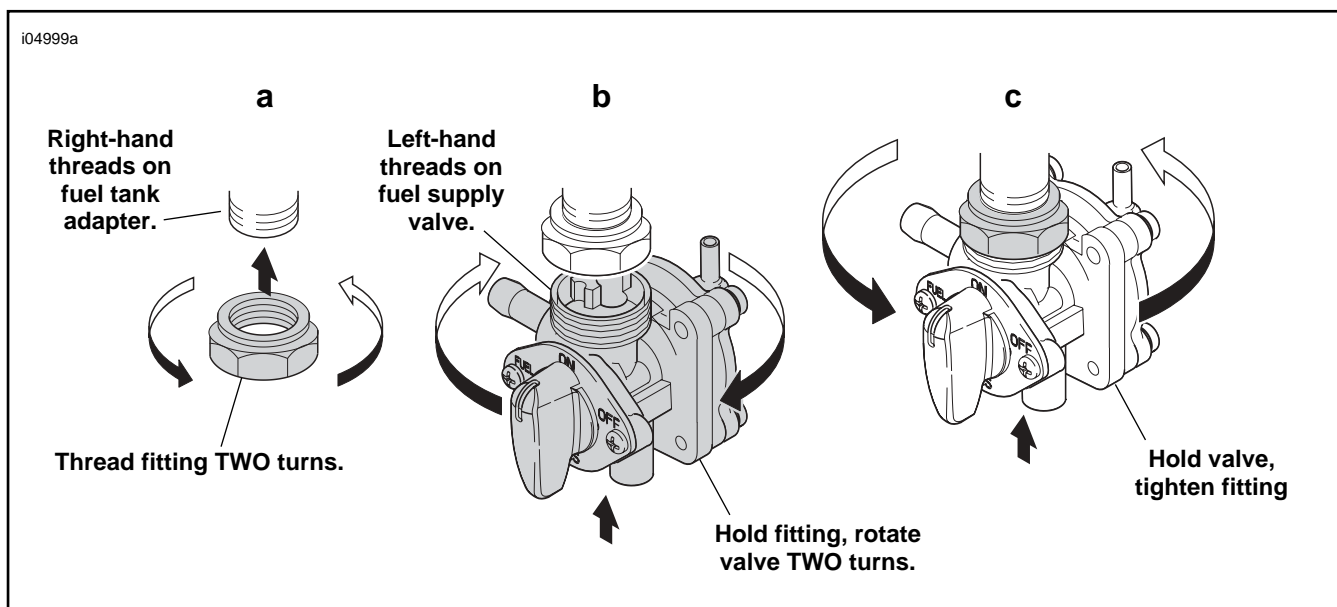


Figure 2. Attaching the Fuel Supply Valve to the Tank