

-J02910

Kit Number Y0159.H

REV. 6-30-2003

S3/S3T DASH PANEL CLOCK

General

This replacement clock (part number Y0159.H) is an improved version and direct service parts replacement of your original S3/S3T clock. Please note that the factory clock (part number 68869-98Y) with the white background insert is no longer available. This kit fits all 1998-2002 Buell S3/S3T Thunderbolt model motorcycles.

NOTES

There are no Service Parts available for this kit.

This instruction sheet references Service Manual information. A Service Manual for your model motorcycle is required for this installation and is available from your Buell Dealer.

WARNING

The rider's safety depends upon the correct installation of this kit. Follow the procedures listed in this instruction sheet and in the appropriate Service Manual. If the procedures are not within your capabilities, or if you do not have the correct tools, have your Buell Dealer perform the installation. Failure to follow instructions could result in death or serious injury.

Qty	Kit Contents
1	Clock
1	Mounting ring (assembled onto clock)
1	Rubber seal (assembled onto clock)

Removal of U Bracket Mounted Clock

1. Disconnect negative battery cable.

WARNING

To prevent accidental vehicle start-up, which could cause death or serious injury, disconnect negative (-) battery cable before proceeding. (00048a)

2. Detach turn signals and remove front fairing. Refer to appropriate Service Manual for signals and front fairing removal procedures.
3. See Figure 1. Unplug red wire (4) and black wire (3).
4. Unplug blue wire (5) and black jumper wire (1).
5. Remove two nuts and lockwashers to free clock from mounting bracket.
6. From front of dash panel, remove clock.

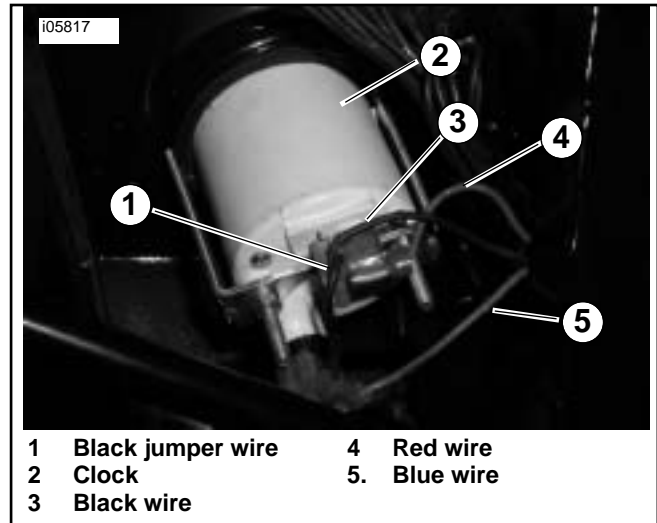


Figure 1. U-Bracket Mounted Clock

Removal of Threaded Ring/Sleeve Mounted Clock

1. Disconnect negative battery cable.

WARNING

To prevent accidental vehicle start-up, which could cause death or serious injury, disconnect negative (-) battery cable before proceeding. (00048a)

2. Detach turn signals and mirrors. Refer to appropriate Service Manual for signals and mirrors removal procedures.
3. See Figure 2. Unplug red wire (2), black wire (1), and blue wire (3).
4. Remove mounting o-ring and sleeve to free clock from dash. Remove clock by pushing from the back side and discard.

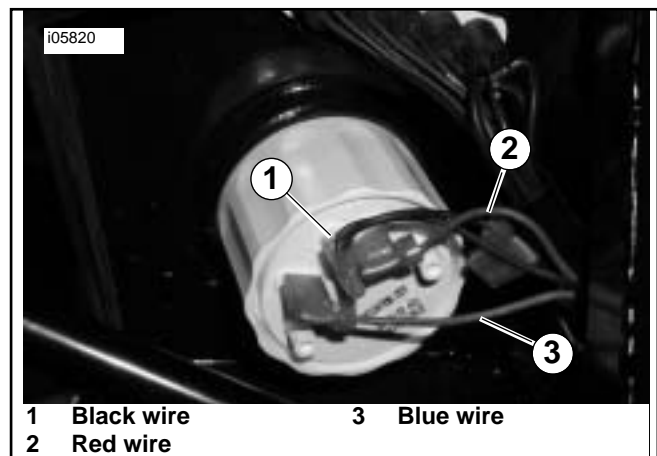


Figure 2. Threaded Ring and Sleeve Mounted Clock

Kit Installation.

1. See Figure 3. Slide clock (3) through front of dash panel. The clock may be tight during install into dash hole because of clock threads.

NOTES

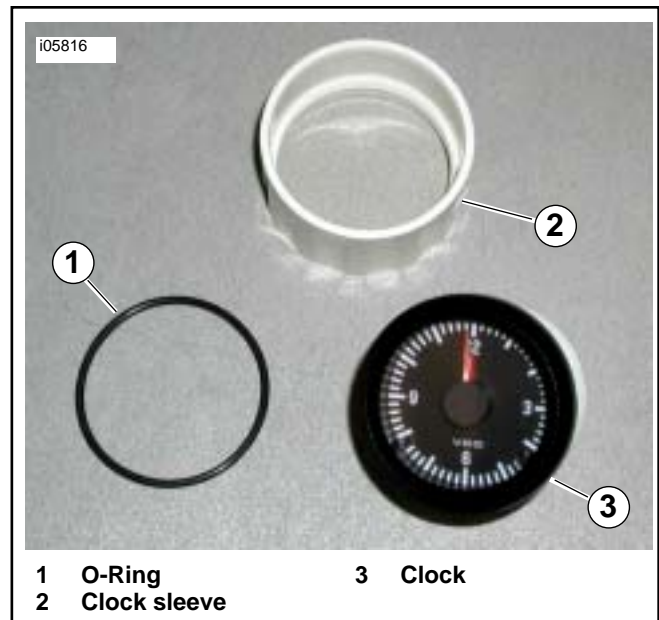
If there is difficulty installing clock into dash, press firmly on clock face and wiggle.

Once threaded area clears opening, clock will rotate freely in hole for final positioning.

2. Rotate clock so that face is positioned properly and hold in place while securing.
3. Install mounting o-ring and sleeve onto clock. Tighten the sleeve until snug and clock face can no longer be rotated by hand. **DO NOT OVER TIGHTEN.**
4. See Figure 4. On back of the clock, attach red wire to positive (+) terminal (2) and black wire to negative (-) terminal (1).
5. Attach blue wire to the remaining terminal (3) on back of clock.
6. See Figure 1. Black jumper (1) is not used. Wrap back on black wire (3).
7. Attach front fairing, mirrors and turn signals. Refer to Service Manual installation procedures.
8. Re-connect negative battery cable.

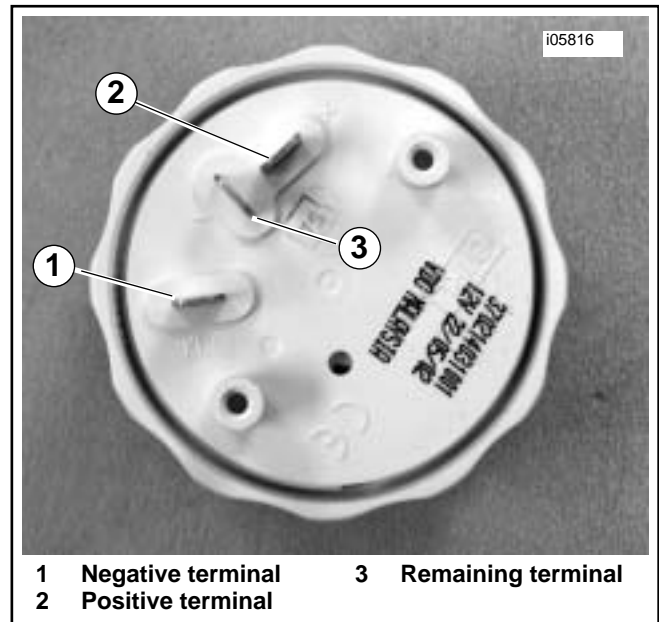
Clock Adjustment

1. See Figure 5. Clock can be adjusted forward or backward. Use a toothpick or paperclip to depress the desired button. Button on lower left (1) of face adjusts readout in counter-clockwise direction. Button on lower right (2) adjusts read out in clockwise direction.
2. Press and hold button for desired direction of adjustment. Hands will initially advance in slow adjust mode. After holding button for 5-10 seconds clock will switch to fast adjust mode. Fast adjust mode will continue until button is released. When clock nears desired setting, release button.
3. Press and release button for fine adjustment.



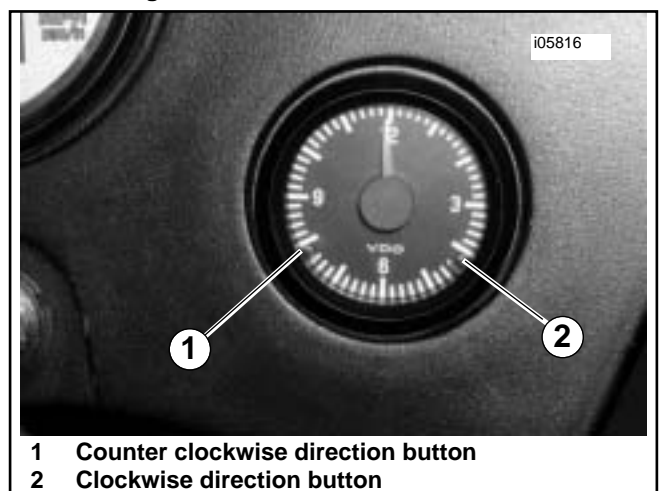
1 O-Ring
2 Clock sleeve
3 Clock

Figure 3. Threaded Ring and Sleeve Mounted Clock Components



1 Negative terminal
2 Positive terminal
3 Remaining terminal

Figure 4. Terminals on Back of Clock



1 Counter clockwise direction button
2 Clockwise direction button

Figure 5. Clock Adjustment Buttons