

# INSTRUCTION SHEET

**Buell**  
AMERICAN MOTORCYCLES

-J03146

Kit Number 58892-95Y

REV. 04-16-2004

## MIRROR/INSTRUMENT PANEL STABILIZER

### General

This kit contains a mirror/instrument panel stabilizer for 1995 Buell S2-Thunderbolt. *NOTE*

A Service Manual for your model motorcycle is available from your Buell Dealer.

### Kit Contents

Quantity	Description	Part Number
1	Fairing link	L0910.8
1	Mirror Stabilizer bracket	L0911.8
1	Bracket mounting hook, left	L0912.8
1	Bracket mounting hook, right	L0913.8
1	Bracket hook link tube	L0914.8
6	Flat washers, .25 in.	B0613.1Z
1	Socket head cap screw, .25" x .625"	AA0405.2CZ
1	Socket head cap screw .25" x .75"	AA0406.2CZ
4	Locknuts .25"	DA0400.3CZ
2	Tape strips, 2" x 1.25"	C0104.8

### CAUTION

Speedometer cable assembly has limited range of movement when attached to speedometer. Use caution not to damage speedometer cable when moving dash panel.

### Installation

1. Remove the seat and fuel tank cover.
2. Remove the three Phillips screws and plastic washers securing the dash panel to the front fairing mount.
3. Move the dash panel forward and to the right to provide maximum working clearance.
4. See Figure 1. Remove any dirt or grease from the front of the steering stem and fairing bracket. Install the tape strips as shown.
5. See Figure 2. Place the bracket hook link tube (2) on the left bracket mounting hook (3). Slide the link tube and left bracket mounting hook under motorcycle frame tubes as shown in Figure 1.
6. Install the right bracket link tube (1) to complete the assembly. Do not pinch the fuel tank vent hose.
7. Place the mirror stabilizer bracket (4) over the right and left bracket mounting hooks (1,3). Secure with one flat washer (5) and locknut (6) on each side. Do not tighten at this time.
8. Loosely attach fairing link to dash panel mounting post with screw (9), two flat washers (5) and locknut (6)
9. Install screw (8) two flat washers (5) and locknut (6) to connect fairing link to mirror stabilizer bracket. Do not tighten at this time.

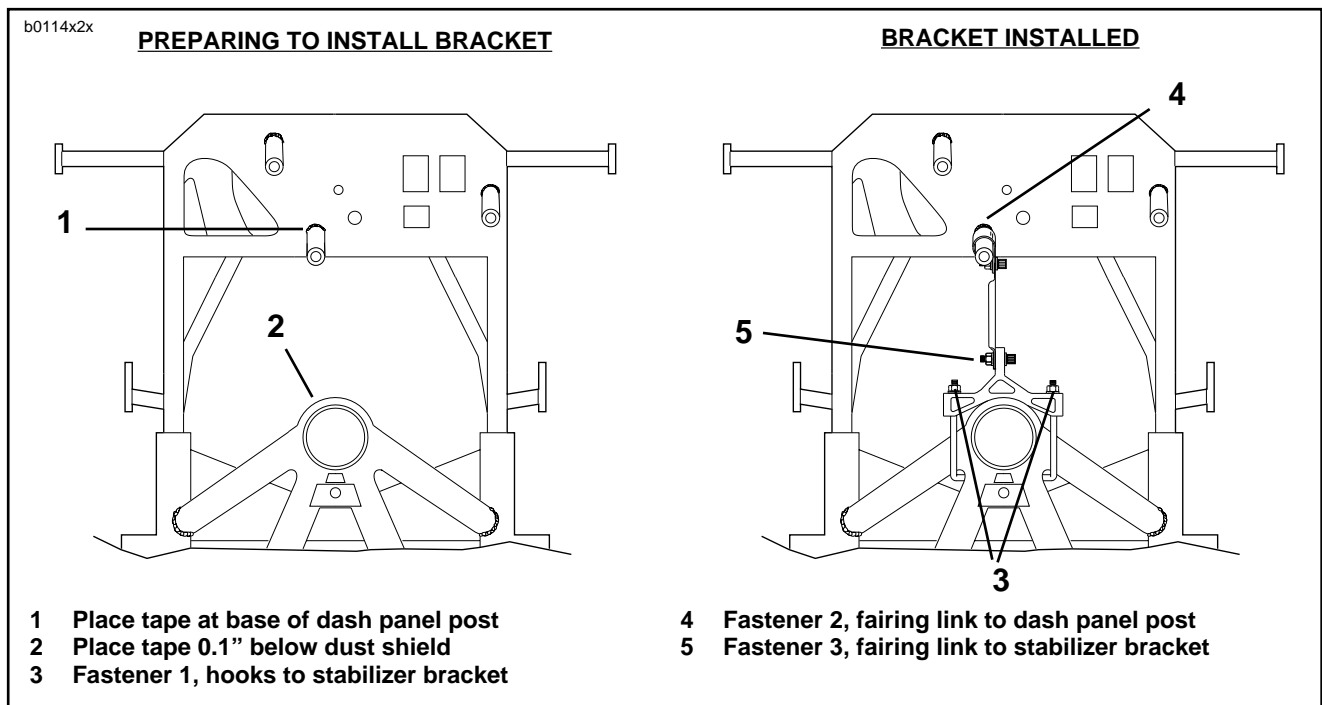


Figure 1. Mirror/Instrument Panel Stabilizer Installation

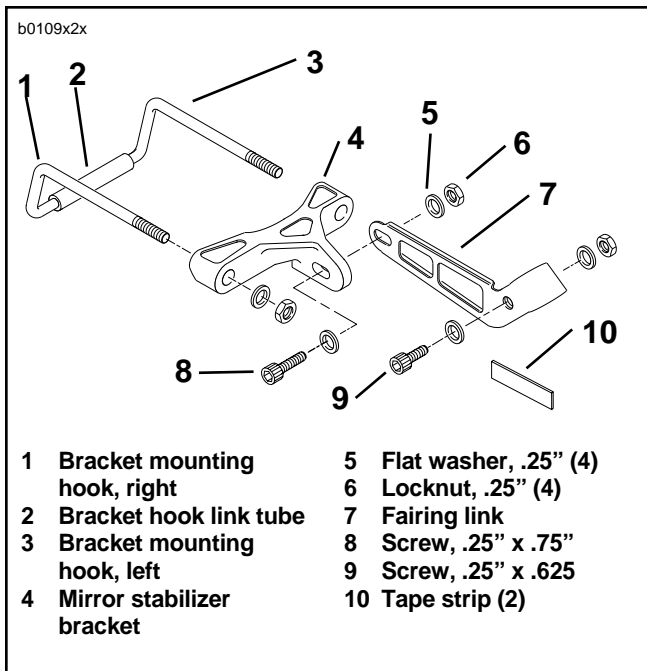


Figure 2. Kit components

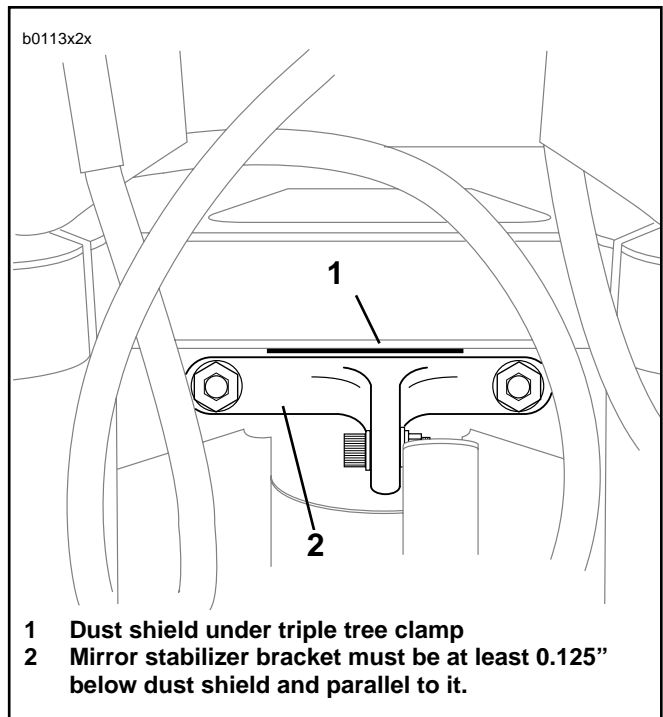


Figure 3. Checking Installation

**CAUTION**

Fastener tightness may vary according to individual motorcycle. Tighten the fasteners according to the torque specifications given in Table 1. Do not overtighten fasteners. Overtightening the fasteners may bend the mounting hooks.

10. Fastener tightness depends up on the Vehicle Identification Number (V.I.N.) found on the motorcycle frame. Tighten the fasteners according to the torque specifications given in Table 1. Tighten in the order shown in Figure 1.
11. See Figure 3. Check the distance between the top of the mirror stabilizer bracket and dust shield below upper triple tree clamp. The bracket and dust shield must be parallel and have a gap of at least 0.125".

12. Place dash panel on fairing bracket mounting posts. Secure the dash panel to the fairing bracket with the 3 Phillips screws and plastic washers.

**WARNING**

After installing seat, pull upward on front of seat to be sure it is in locked position. While riding, a loose seat can shift causing loss of control, which could result in death or serious injury. (00070a)

13. Install the seat and fuel tank cover.

V.I.N. Number	Fastener Location as Shown in Figure 1.		
	Fastener 1 Hooks to Stabilizer Bracket	Fastener 2 Fairing Link to Dash Panel Post	Fastener 3 Fairing Link to Stabilizer Bracket
4MZRT11H1S3133064 and below	Tighten snug and then turn an additional 1-1/2-2 turns	48-72 in-lbs (5.4-8.1Nm)	48-72 in-lbs (5.4-8.1Nm)
4MZRT11H1S3133065 and above	Tighten until hook threads are flush with nut or slightly protruding	48-72 in-lbs (5.4-8.1Nm)	48-72 in-lbs (5.4-8.1Nm)