



INSTRUCTIONS

-J03440

REV. 8-17-2004

Kit Number 69289-05

AUXILIARY LAMP KIT

General

This kit is designed to install on auxiliary lamps on 2004 FLHRS/I models.

NOTE

Auxiliary / fog lamps are not included in this kit. The desired style of lamp must be purchased separately. HDI (International) motorcycles should only use approved fog lamps.

WARNING

The rider's safety depends upon the correct installation of this kit. Use the appropriate service manual procedures. If the procedure is not within your capabilities or you do not have the correct tools, have a Harley-Davidson dealer perform the installation. Improper installation of this kit could result in death or serious injury. (00333a)

NOTE

A Service Manual for your model motorcycle is available from your Harley-Davidson Dealer.

Installation

1. Remove the seat according to the procedure in the applicable Service Manual

WARNING

To prevent accidental vehicle start-up, which could cause death or serious injury, disconnect negative (-) battery cable before proceeding. (00048a)

WARNING

Disconnect negative (-) battery cable first. If positive (+) cable should contact ground with negative (-) cable connected, the resulting sparks can cause a battery explosion, which could result in death or serious injury. (00049a)

2. Disconnect battery cables, negative cable first.
3. Remove the headlight according to the procedure in the applicable Service Manual.
4. See Figure 1. Remove the four screws (two each side) from the headlamp nacelle covers (upper and lower fork brackets).
5. See Figure 2. Install the double-ended studs (1) supplied in the kit into the upper and lower fork brackets.
6. Install the four grooved bushings over the studs.

7. Carefully install the mounting bracket (2) onto the studs: Slide the slots at the top of the brackets onto the top studs, then rotate the bottom of the mounting bracket until the slots at the bottom of the bracket engage the lower studs. Secure the mounting bracket using the acorn keps nuts (3) supplied in the kit. Tighten the acorn keps nuts to 18 ft-lbs (24 Nm).

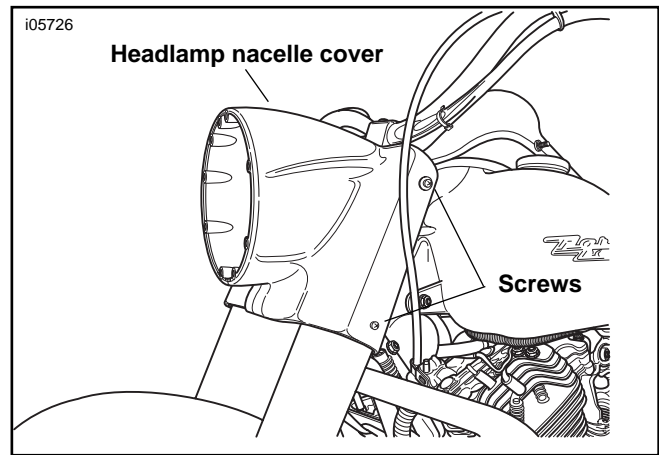


Figure 1. Remove Headlamp Nacelle Screws

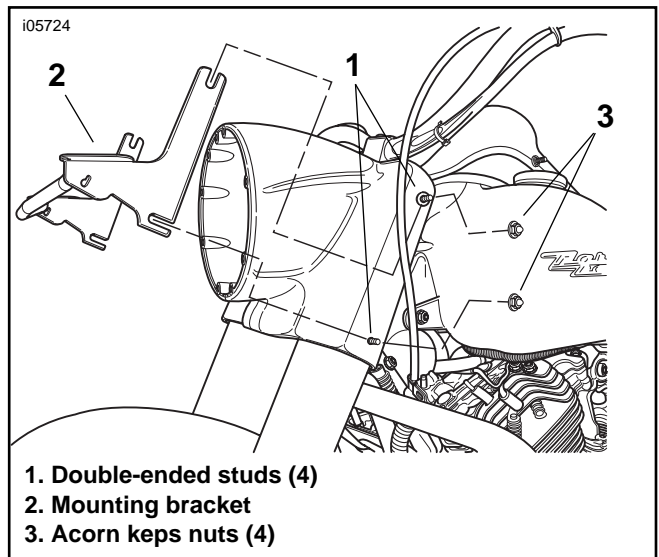


Figure 2. Install Mounting Bracket

8. Cut the conduit supplied in the kit into two equal-length pieces (each approximately 11 inches [100 cm] long), and slide a section of conduit (1) over the wires of each lamp (2).
9. Slide a swivel block (3) over the end the passing/fog lamp wires (2).
10. Slide a belleville washer (4) over the end of the passing/fog lamp wires, with the concave side of the washer facing the passing/fog lamp.
11. Install the lamp with swivel block and washer assembly on the mounting bracket (5), by routing the passing/fog lamp wires through the hole in the mounting bracket.
12. Slide a clamp block (6) and acorn nut (7) over the end of the passing/fog lamp wires, and install the acorn nut on the passing/fog lamp. Hand tighten the acorn nut at this time.
13. See service parts illustration. Locate the outer trim ring (13), inner nesting ring (16), screw (14), and nut (15).
14. See Figure 4. Place the inner nesting ring on the bulb. Connect the black wire to the bulb spade terminal next to the bulb indexing tab (1) on the bulb. Install the gray wire on the remaining spade terminal.
15. Attach the bulb and nesting ring using the trim ring, screw and nut identified in step 12.
16. Repeat Steps 9-15 to install the passing/fog lamp on the other side of the mounting bracket.

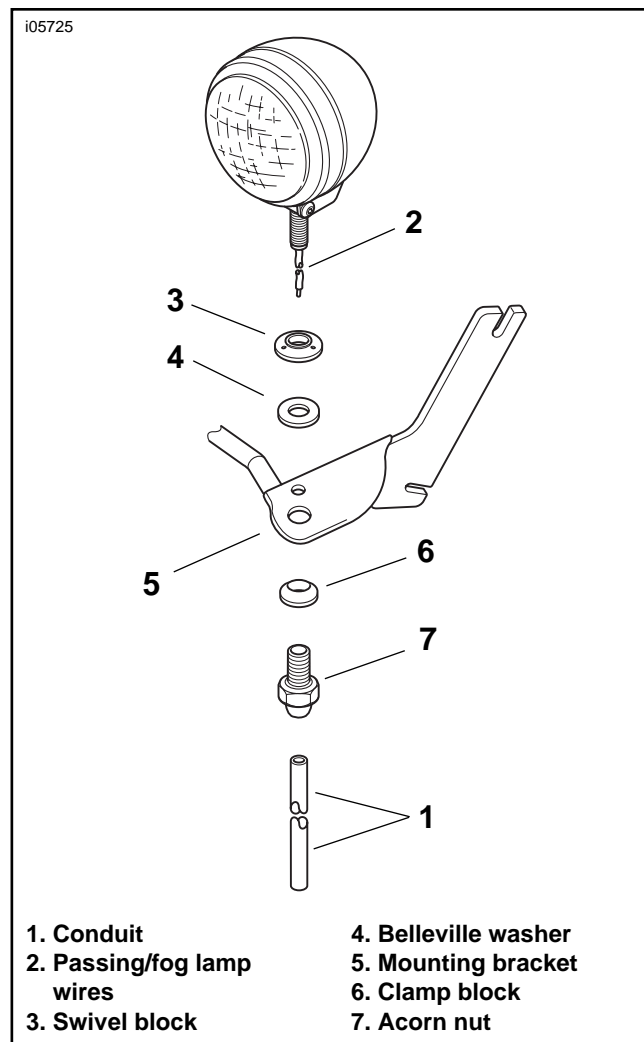


Figure 3. Install the Auxiliary Lamps

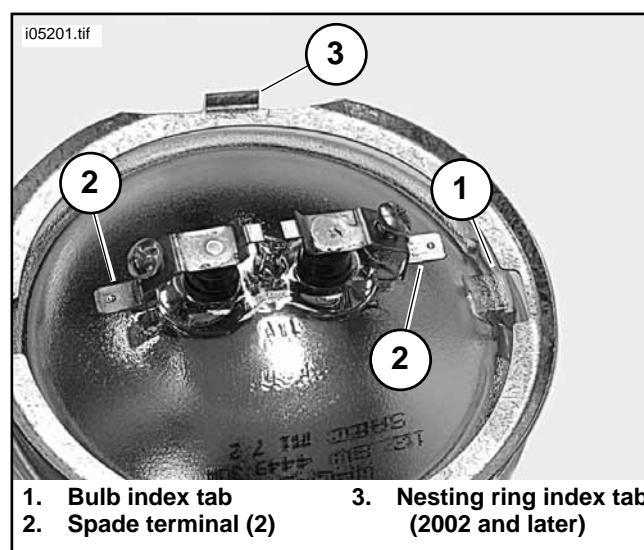


Figure 4. Auxiliary Lamp Bulb Terminals

17. See Figure 5. Route the passing/fog lamp wires (1) through the opening at the bottom of the headlamp nacelle (2).
18. See Figure 6. Install the passing/fog lamp wires (1 and 2) into the 2-way socket housing (3):

Install the left passing/fog lamp wire (2) into cavity 2 of the socket housing.

Install the right passing/fog lamp wire (1) into cavity 1 of the socket housing.
19. See Figure 5. Connect the 2-way socket housing (3) to the spotlight switch harness connector.
20. Pull the excess slack from the passing/fog lamp wires, and bundle the wires using a cable strap supplied in the kit.
21. Install the headlight according to the procedure in the applicable Service Manual.

⚠ WARNING

Connect positive (+) battery cable first. If positive (+) cable should contact ground with negative (-) cable connected, the resulting sparks can cause a battery explosion, which could result in death or serious injury. (00068a)

22. Connect the battery cables, positive cable first.

⚠ WARNING

After installing seat, pull upward on front of seat to be sure it is in locked position. While riding, a loose seat can shift causing loss of control, which could result in death or serious injury. (00070a)

23. Install the seat according to the procedure in the applicable Service Manual.
24. Align the passing/fog lamps as described in the alignment procedure in the applicable Service Manual. (See Figure 3.) Tighten acorn nuts (7) to 15-18 ft-lbs (20-24 Nm).

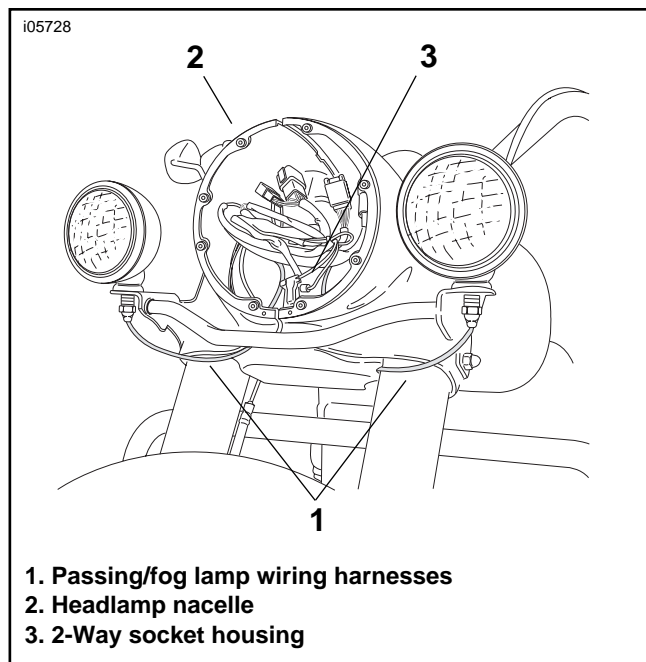


Figure 5. Route Passing/Fog Lamp Wires into Headlamp Nacelle

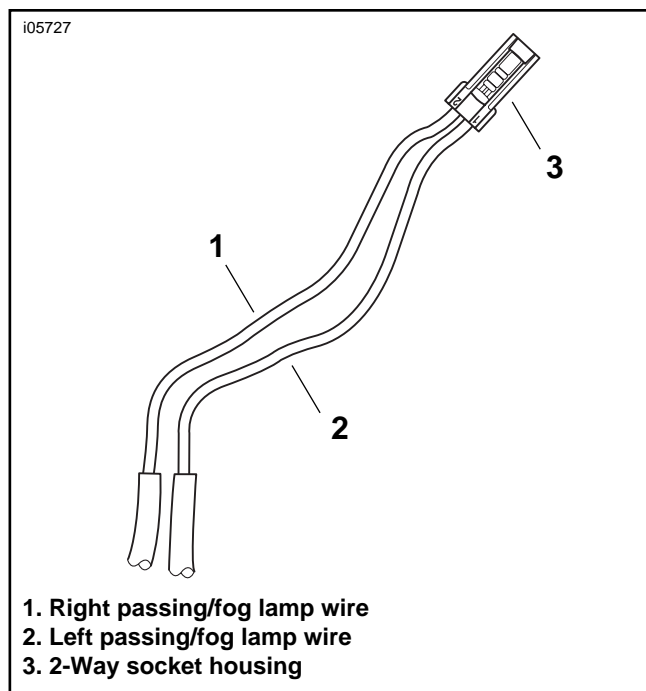


Figure 6. Install the Socket Housing



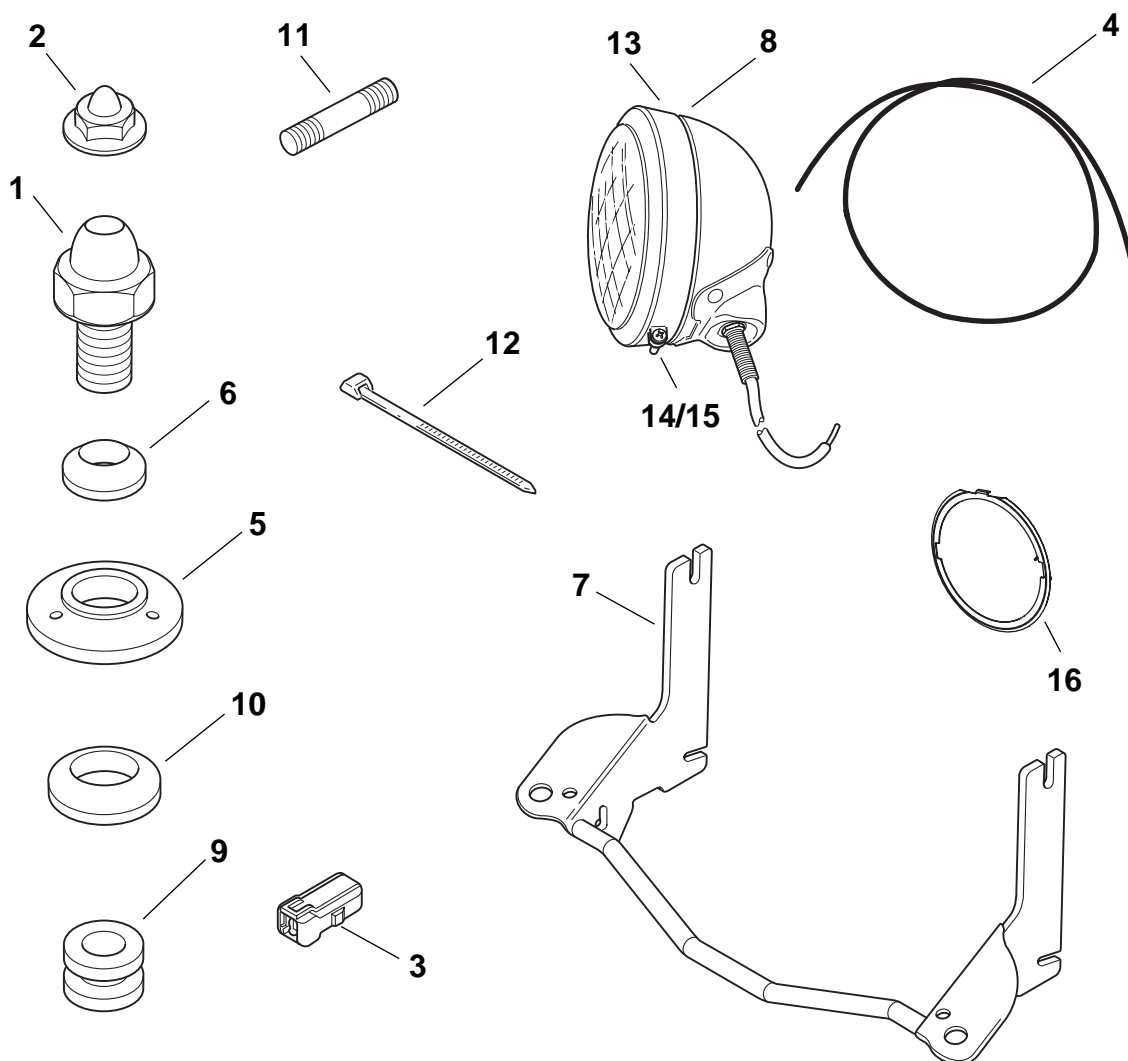
Service Parts

Part No. 69289-05

Date 8/04

Auxiliary Lamp Kit

i06453



Item	Description	Part No.	Item	Description	Part No.
1	Nut, Acorn, 3/8-16 (2)	7892	10	Washer, Belleville, 0.38" ID (2)	6072
2	Nut, Acorn, Keps, 5/16-18 (4)	7992	11	Stud, Double-Ended, 5/16-18 x 1-1/2" (4)	3265A
3	Housing, 2-Way Socket	73152-96WE	12	Strap, Cable (2)	10065
4	Conduit, 22"	Not Sold	13	Trim Ring	68725-62A
5	Swivel Block (2)	68721-62	14	Screw	3514
6	Clamp Block (2)	68720-62	15	Nut	7606
7	Mounting Bracket Assembly	68712-94A	16	Inner Nesting Ring	68331-02
8	Lamp housing	68683-02			
9	Bushing, Steel/Rubber, 1.0" Diameter, Grooved (4)	67621-94			