



INSTRUCTIONS

-J00433

REV. 09-16-2003

Kit Number 68512-89

TURN SIGNAL RELOCATION KIT

General

This kit fits all 1982 and later FXR, FXLR, FXRS and FXRS-SP model motorcycles.

See the Service Parts illustration on the last page of these instructions for kit contents.

NOTE

This instruction sheet references Service Manual information. A Service Manual for your model motorcycle is required for this installation and is available from your Harley-Davidson Dealer.

Installation

Removing the Original Turn Signal Mounts

WARNING

To prevent accidental vehicle start-up, which could cause death or serious injury, disconnect negative (-) battery cable before proceeding. (00048a)

1. Refer to the Service Manual and follow the instructions given to remove the seat and disconnect the negative battery cable. Retain all seat mounting hardware.
2. Remove a rear turn signal lamp assembly. See TURN SIGNALS, LAMP HOUSING REPLACEMENT in the Service Manual. Cut the wire approximately two inches (50 mm) from the turn signal. Label the wire on the motorcycle wiring harness "right" or "left" as appropriate. Repeat for the opposite turn signal lamp assembly.

Discard the original turn signal mounting nuts, but save the turn signal lamps, flat washers and lock washers.

3. See the Service Parts illustration. Place one of the flat washers from Step 2 on a fastener (1) from the kit. Insert the fastener through the attaching hole in the fender and the fender support. Place one of the original lockwashers on the fastener threads, and apply Loctite® 243 (Blue) to the threads. Secure the fender support to the rear fender with an acorn nut (2) from the kit. Repeat for the opposite side.

Tighten the fasteners to 12-18 ft-lbs (16.3-24.4 Nm).

4. Remove the mounting studs from the turn signal lamp assemblies, and discard the studs.
5. Remove the turn signal lens from the lamp assembly. Remove the wire and grommet from their original position in the turn signal lamp body.

Insert a hole plug (8) from the kit into the vacated hole in the turn signal lamp body from the inside, so the small end of the plug is outside the lamp body. Re-assemble the lamp. Repeat for the opposite side.

Installing the New Turn Signal Mount

1. Obtain the directional bar (9) and two jam nuts (10) from the kit. Screw a jam nut all the way onto each end of the directional bar with the counterbored side of the nut against the bar.
2. Obtain the two vinyl-covered electrical cables (11) from the kit. Push one cable through each end of the directional bar to exit the bar at the nearest slot.
3. Place a piece of shrink tube (13) onto the turn signal lead. Splice the wire lead from the turn signal to the lead from the threaded end of the directional bar with a connector (12) from the kit. Position the shrink tube over the connector and heat with a flame or heat gun to seal the connection.
4. Thread the turn signal lamp all the way onto the directional bar but do not tighten. Mark the new end of the turn signal wire lead "right" or "left" as appropriate.
Repeat for the opposite side.
5. Encase the wire from the right-side turn signal lamp in the small diameter conduit (14) from the kit so the conduit begins inside the directional bar, just past the slot. Route the wire to the left side to join the left directional lead, and trim the conduit (NOT the wire) approximately 2 inches (50 mm) past that point.
6. Use the cut off piece of small diameter conduit to encase the left-side turn signal lead. Begin the conduit inside the directional bar, just past the slot. Trim the conduit (NOT the wire) approximately 2 inches (50 mm) past the point where it joins the right-side turn signal lead.
7. Encase the wires from both turn signals in the large diameter conduit (15) from the kit so the larger conduit overlays the two ends of the smaller conduit by approximately one-fourth to one-half inch (6 to 13 mm). Position a cable strap (14) from the kit at this point, tightening it around the larger conduit to hold the wires and smaller conduit in place.
8. Remove the three 1/4-20 Pozidriv® screws and hex nuts that attach the license plate support bracket to the fender. Save one screw, but discard the remaining fasteners. Remove the entire license plate bracket assembly and set aside for later re-assembly.



Figure 1. Hole position

9. See Figure 1. Drill a 3/8 inch diameter hole in the rear fender as shown.
10. Position the rubber mounting pad (3) from the kit between the fender and license plate bracket. Insert an original screw through the top hole, and loosely assemble the bracket and pad to the fender with a lockwasher (5) and locknut (6) from the kit.
Insert the directional bar studs into the two bottom holes. Route the conduit from the right-side turn signal between the directional bar and the inside lower bend of the license plate support bracket. Secure the directional bar to the fender with two flat washers (4), lockwashers (5) and locknuts (6) from the kit, and tighten to 10 ft-lbs (13.6 Nm).
11. Route the conduit-encased leads through the new hole in the fender.

12. Pass the leads and conduit through the grommet (7) from the kit underneath the fender with the thinner lip of the grommet up. Insert the grommet through the fender hole so the thin lip is on the outside of the fender.

NOTE

Do not lose track of the wire identification while performing the following steps.

13. Locate the original turn signal wiring on the motorcycle wiring harness. Trim the new turn signal wires to the necessary length to allow splicing to the original wires. Trim the conduit slightly longer to allow the excess to cover the splice connections.
14. See Figure 1. Slide a piece of heat shrink conduit (X) from the kit onto the wire coming from one turn signal lamp. Splice the wire from the lamp to the corresponding wire on the motorcycle with a connector (X) from the kit. Position the shrink tube over the connector and heat as was done in Step 3.

Repeat for the other set of wires. Cover the two splice connections with the conduit covering the new turn signal wiring.

15. Replace the turn signal wiring in the inside fender clips.
16. Refer to the Service Manual and follow the instructions given to re-attach the negative battery cable and install the seat.

⚠ WARNING

After installing seat, pull upward on front of seat to be sure it is in locked position. While riding, a loose seat can shift causing loss of control, which could result in death or serious injury. (00070a)



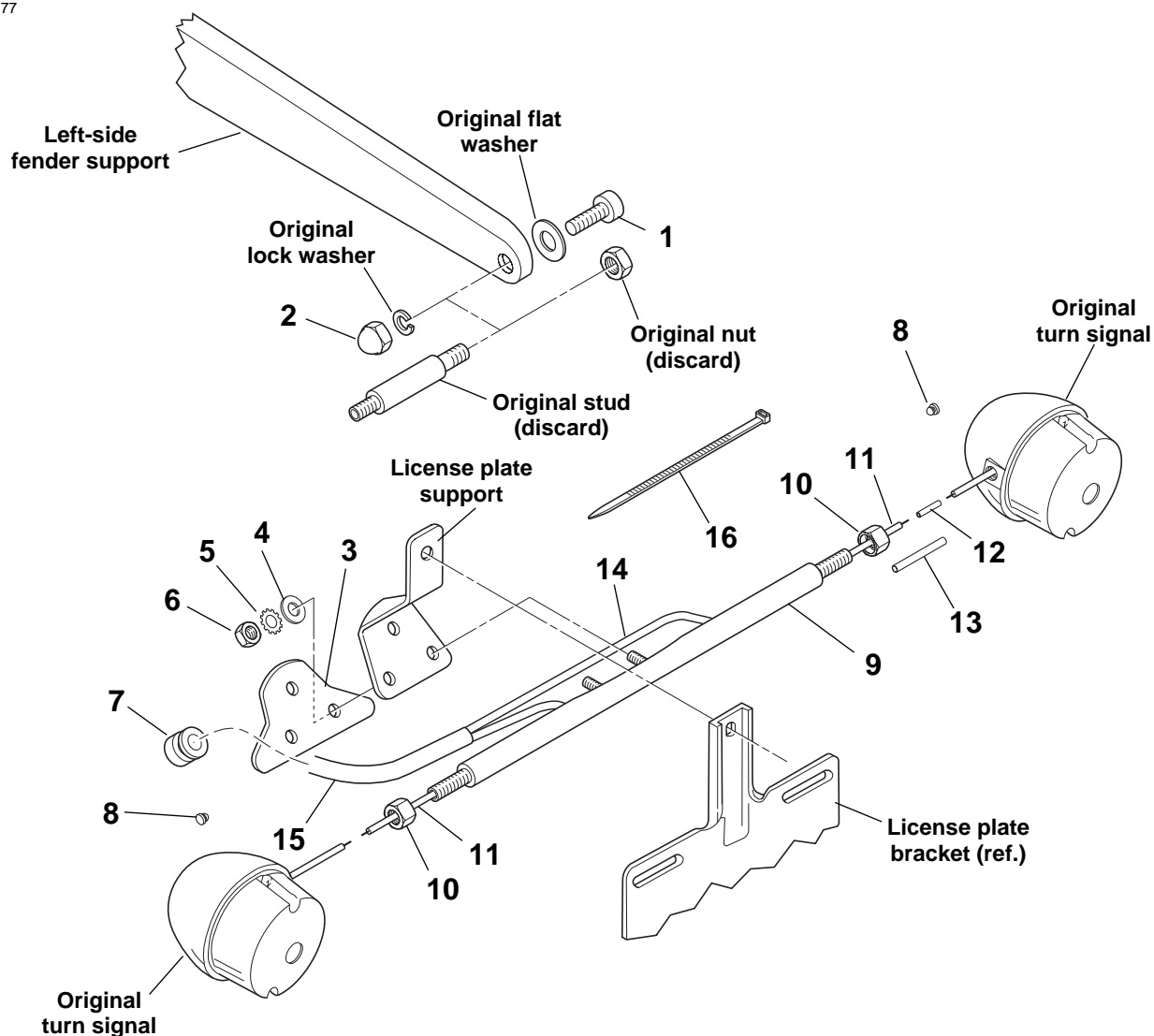
Service Parts

Part No. 68512-89

Date 09/03

Turn Signal Relocation Kit

i05177



| Item | Description | Part No. | Item | Description | Part No. |
|------|---|----------|------|---|-----------|
| 1 | Screw, socket head, 3/8-16 x 1 in. (2, for 1988 and later) | 861A | 9 | Directional bar assembly | 68430-89A |
| | Bolt, hex head, 3/8-24 x 2-1/4 in. (2, for 1987 and earlier) | 3945 | 10 | Jam nut, directional bar (2) | 68424-89 |
| 2 | Acorn nut, locking, 3/8-24 (2) | 7787 | 11 | Cable, electrical (Black) (2) | 32692-70 |
| 3 | Pad, rear directional mounting | 68456-89 | 12 | Connector (4) | 70581-73 |
| 4 | Flat washer, 1/4 in. I.D. (2) | 6703 | 13 | Conduit, heat shrink (5) | 67113-83 |
| 5 | Lock washer, external tooth, 1/4" (3) | 7230 | 14 | Conduit, black vinyl (0.13 in. dia. x 30 in. long) | 70530-89 |
| 6 | Lock nut, 1/4-20 (3) | 7686 | 15 | Conduit, black vinyl (0.26 in. dia. x 30 in. long) | 70552-70 |
| 7 | Grommet | 67070-76 | 16 | Cable strap, 5.5 in (140 mm) long (7) | 10065 |
| 8 | Plug, hole (2) | 58768-85 | | | |