



INSTRUCTIONS

-J00535

REV. 10-1-94

Kit Number 99002-88C

CHROME DISPLAY STAND KIT

General

This kit is designed for installation on 1983 and later FLT model vehicles.

QTY DESCRIPTION

2	Bolt, hex socket head, 1/2-20 x 1-1/4 in. (2)
2	Bolt, hex head, 5/16-24 x 1 in. (2)
2	Bolt, hex head, 5/16-18 x 1 in. (2)
2	Bolt, hex head, 3/8-24 x 2-1/2 in. (2)
2	Washer, flat, -1/4 in. (2)
2	Lockwasher, internal/external 5/16 in. (2)
2	Locknut, 3/8-24 in. (2)
2	Floorboard support arm (2)
2	Spacer (2)
1	Insert, hex drive
1	Display stand assembly
2	Pin, 3/8 X 1-1/4 in.
1	Bolt, socket head, 5/6-18 x 3/8 in.
2	Bolt, hex head, 3/4-16 x 2-1/4 in.
2	Jamnut, 3/4-16 in.

Preparation

1. Remove forward footboard support arms from each side of motorcycle. Use the hex drive insert in a 3/8 in. socket to remove the hex socket head bolts that fasten the footboard support arms to the frame. Discard bolts.
2. See Service Parts Illustration. Replace the stock foot-

board support arms with footboard support arms (9) provided in kit.

3. Fasten new footboard support arms (9) with the stock washers and 1/2-20 X 1-1/4 in. hex socket head bolts (1) provided. Tighten bolts to 78 ft-lbs torque.
4. Remove the 3/8 in. bolts that fasten the bottom ends of the highway bar to the frame. Discard bolts.

1994 and Earlier Models:

5. On 1994 and earlier models, remove hex head bolts that fasten regulator mounting bracket to frame. Let the regulator temporarily hang by its wires.

1995 Models

NOTE

1995 FLT model frames use clinch studs, mounted in the frame crossmember to secure the voltage regulator or regulator mounting bracket to the frame.

6. On 1995 and later models, remove locknuts and washers from regulator studs. On fuel injected models, remove the regulator wire clip. Let the regulator temporarily hang by its wires.

Fuel injected models

7. Be sure the voltage regulator is safely out of the way. Use a hammer and knock the regulator studs out of the frame crossmember. One or two blows should be sufficient.

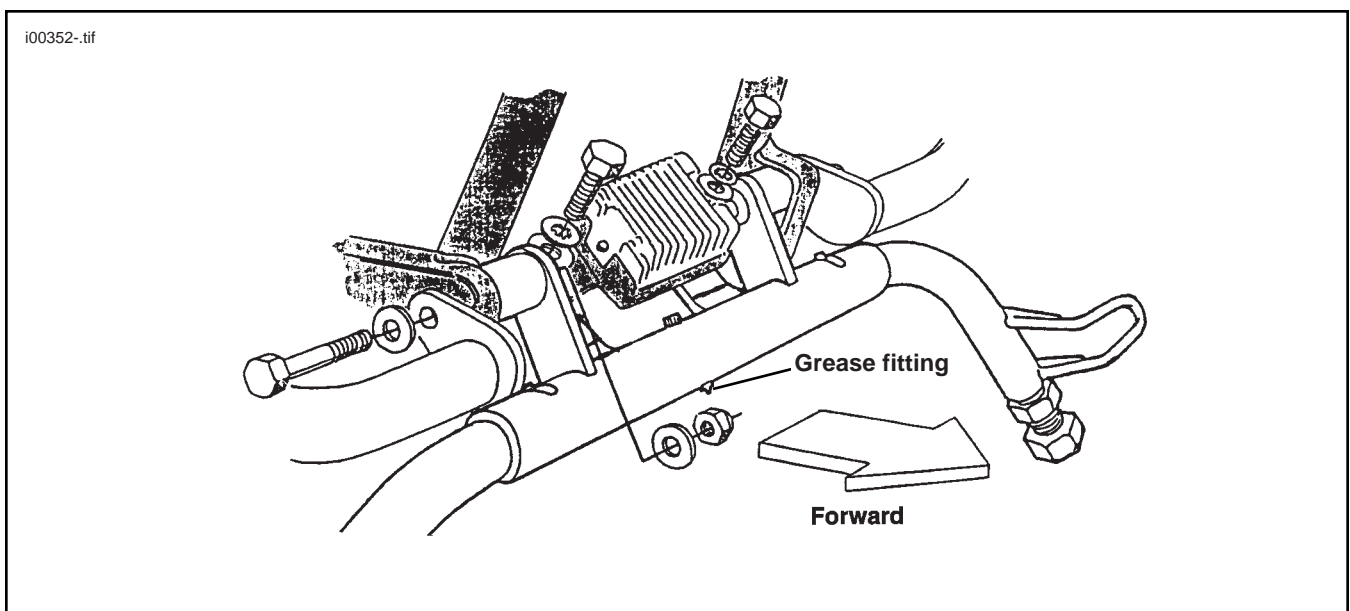


Figure 1. Chrome Display Stand Shown In Extended position - 1994 and Earlier Syle Frame

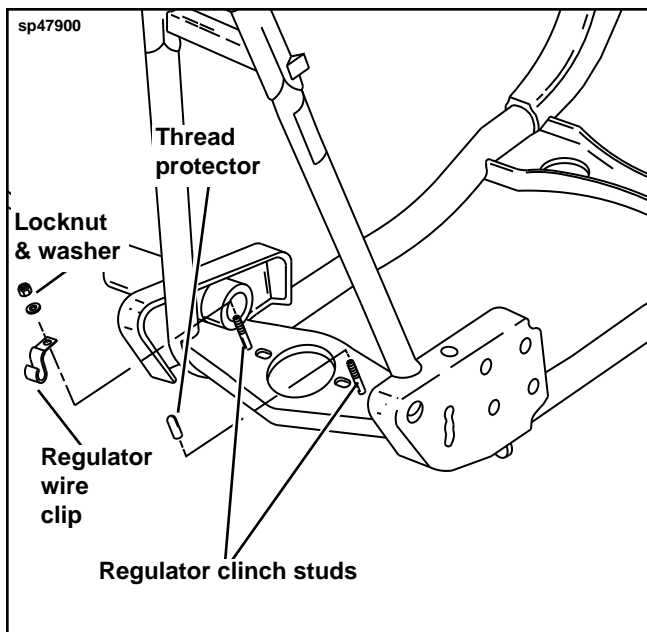


Figure 2. Frame - 1995

Installation

DISPLAY STAND

1994 AND EARLIER MODELS:

1. See Figure 1. Slide the display stand into position.
2. See Service Parts Illustration. Fasten with 3/8-24 X 2-1/2 in. bolts (5), original washers, 1-1/4 in. spacers (11) and locknuts (8). Tighten finger tight.

1995 MODELS

Non-Fuel injected models:

3. Place stand in position over the regulator studs.

Fuel injected models:

4. Install the 1/4-20 X 1-1/4 in. hex bolts (3) and 1/4 in. I.D. washer (6) through the crossmember stud holes, from the bottom.
5. Place stand in position over the new regulator bolts (3).

Both models

6. See Service Parts Illustration. Fasten with 3/8-24 X 2-1/2 in. bolts (5), original washers, 1-1/4 in. spacers (11) and locknuts (8). Tighten finger tight.

VOLTAGE REGULATOR

7. Place the regulator and mounting bracket in position and install as follows.
 - a. **1991 and earlier models:** Use 5/16 in. internal tooth lockwashers (7) and 5/16-24 X 1 in. bolts (2).
 - b. **1992 - 1994 models:** Use 5/16 in. internal tooth lockwashers (7) and 5/16-18 X 1 in bolts (4).

8. Tighten 3/8 in. diameter bolts to 33 ft-lbs. Tighten 5/16 in. diameter bolts to 19 ft-lbs.

1995 Models

Non-Fuel injected models:

9. Install stock washer and locknut on studs. Tighten to 6 - 8 ft-lbs. Do not over-tighten. Place stock thread protectors over exposed stud threads.

Be sure there is a good vehicle ground for voltage regulator.

Fuel injected models:

10. See Figure 2. Place regulator wire clip over the right side bolt. Place the regulator in position.
11. See Service Parts Illustration. Install stock washer and locknut on 1/4-20 X 1-1/4 in. hex bolts (3). Tighten to 6 - 8 ft-lbs.

USING YOUR DISPLAY STAND

⚠WARNING

When using this stand, do not park motorcycle on inclined surfaces with vehicle front pointing downhill. Vehicle could roll off stand and fall, causing personal injury and/or damage to the vehicle.

⚠CAUTION

The foot lever is NOT designed for you to stand on it, as you would with a center stand. Instead, use the lever to rotate the legs down. Engage the stand by setting your foot against the rear of the lever and pulling back on the motorcycle.

The feet of the display stand are adjustable (upward and downward) to allow for differences in suspension and weight load.

1. With your motorcycle on a level surface, lower the display stand legs to the ground.
2. Stop the left side foot lever from sliding by using your left foot as a brace.
3. Ease the motorcycle onto the display stand by rolling the motorcycle backward.

⚠CAUTION

The motorcycle's front wheel should never be lifted off the ground by the display stand.

The support feet may now be adjusted by turning the feet into or out of the legs. When the feet are properly adjusted, the front wheel should be on the ground, but have enough weight on the legs to make the motorcycle laterally (side-to-side) stable.

5. Check that the motorcycle is vertical (not leaning to

either side) and then lock the feet in position by tightening the jam nut against the leg on each side.

- Periodically check all display stand nuts and bolts for tightness.

NOTE

A grease fitting has been provided at the center of the stand. Lubrication at regular intervals with a good quality grease will ensure a long operating life.



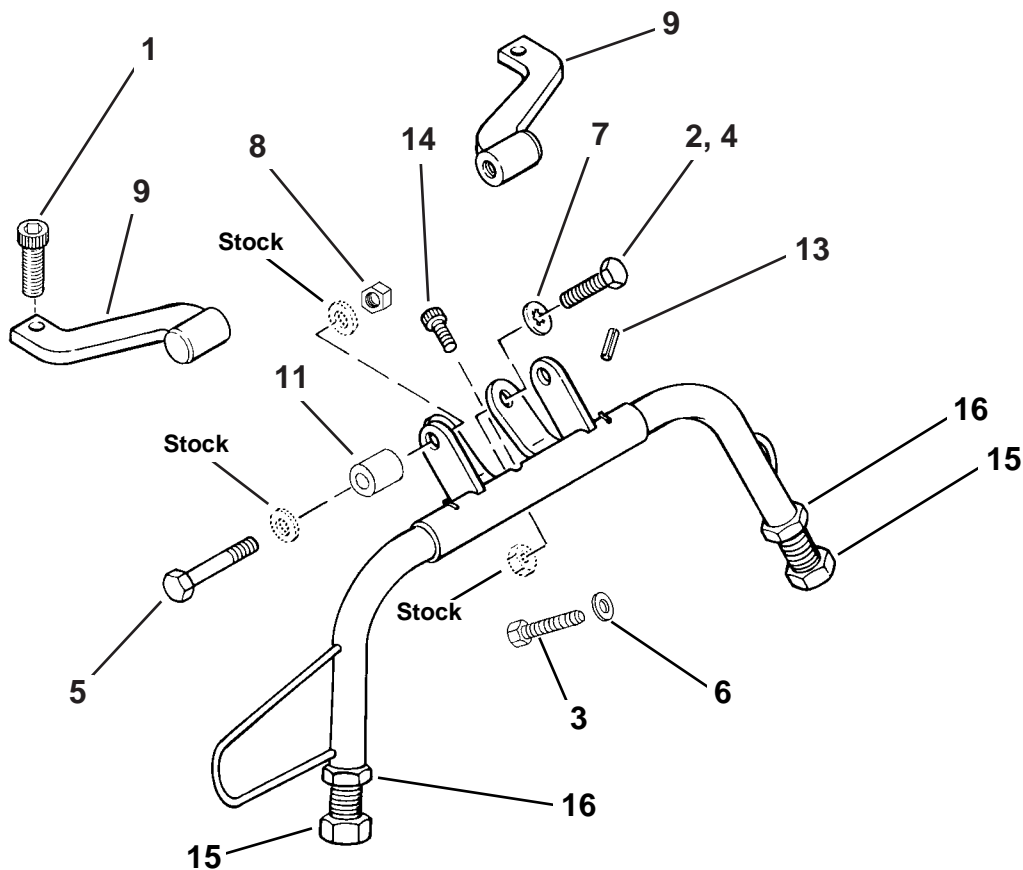
Service Parts

Part No. 99002-88C

Date 10/94

Chrome Display Stand Kit

sp99002



ITEM	DESCRIPTION	PART NO.
1	Bolt, hex, socket head, 1/2-20 x 1-1/4 in. (2)	3516A
2	Bolt, hex head, 5/16-24 x 1 in. (2)	3960W
3	Bolt, hex head, 1/4-20 x 1-1/4 in. (2)	3993
4	Bolt, hex head, 5/16-18 x 1 in. (2)	4017
5	Bolt, hex head, 3/8-24 x 2-1/2 in. (2)	4412
6	Washer, flat, 1/4 in. (2)	6703
7	Lockwasher, internal/external 5/16 in. (2)	7127
8	Locknut, 3/8-24 in. (2)	7775
9	Footboard support arm (2)	47383-89
10	Label (Not shown)	52762-88
11	Spacer (2)	(not sold separately)
12	Insert, hex drive (Not shown)	(not sold separately)
	Display stand assembly	(not sold separately)
13	Pin, 5/16 X 1-1/4 in. (2)	281
14	Bolt, socket head, 5/6-18 x 3/8 in.	3531A
15	Bolt, hex head, 3/4-16 x 2-1/4 in. (2)	4034
16	Jamnut, 3/4-16 in. (2)	7855W