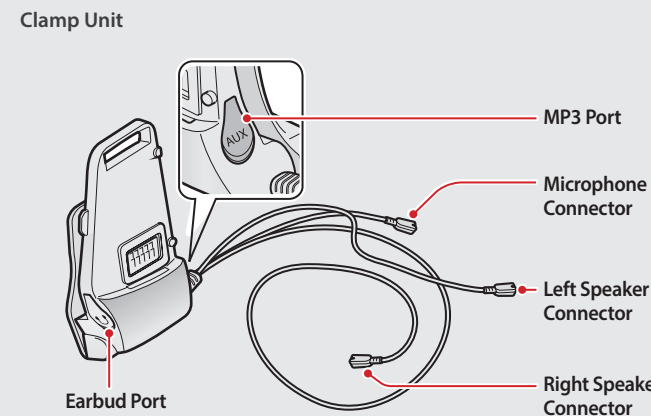
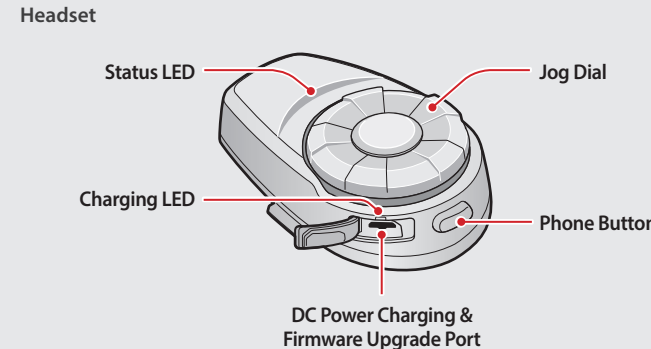
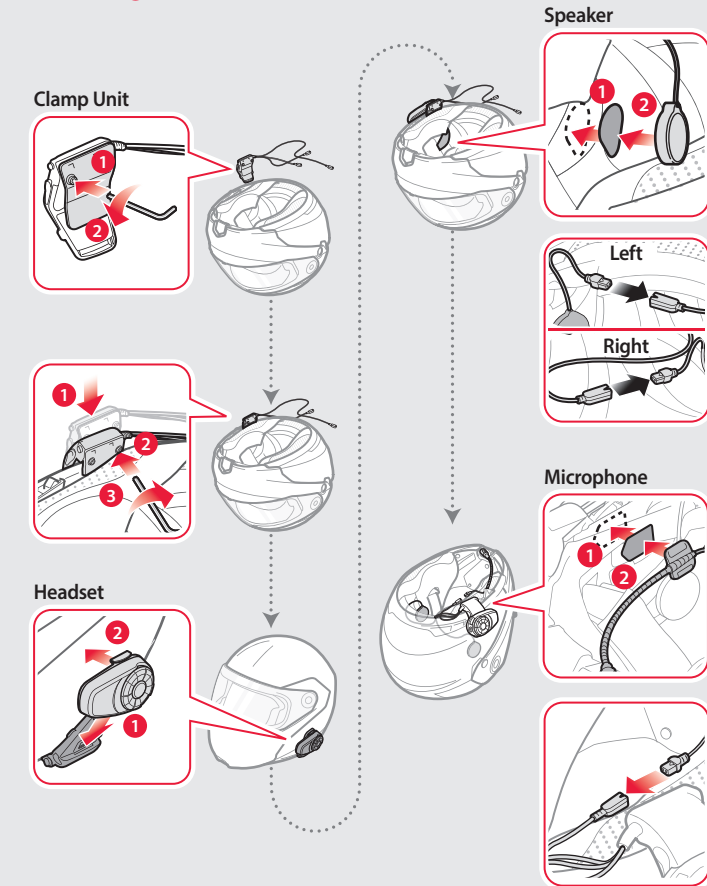


PREPARATION

Knowing the Headset Layout

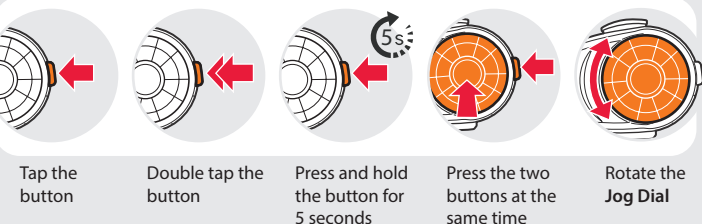


Installing the Headset

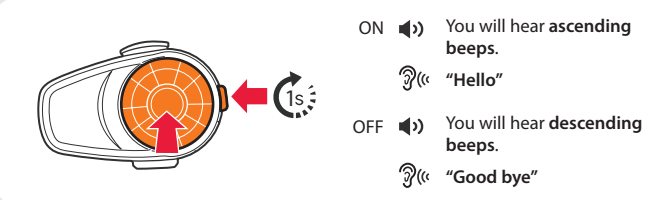


BASIC OPERATION

Operating the Buttons

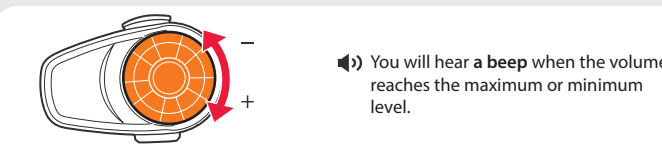


Turning On/Off the Headset

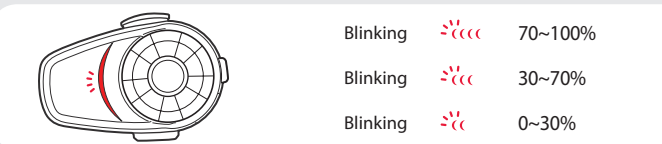


Simultaneously press and hold the Jog Dial and the Phone Button for 1 second to turn on or off the headset.

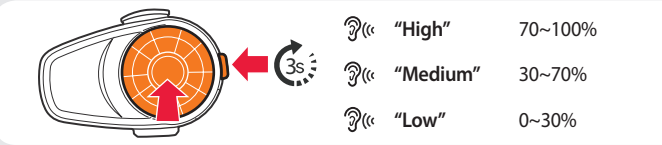
Adjusting the Volume



Checking the Battery Level

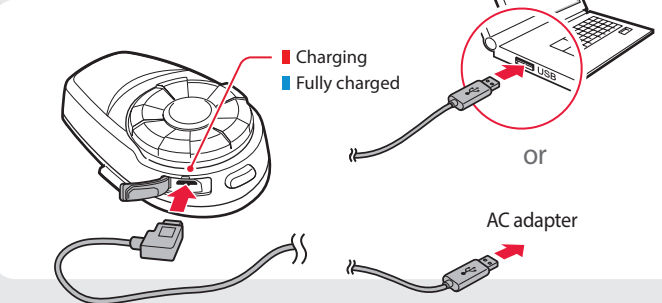


Turn on the headset and check the battery level via the Status LED.



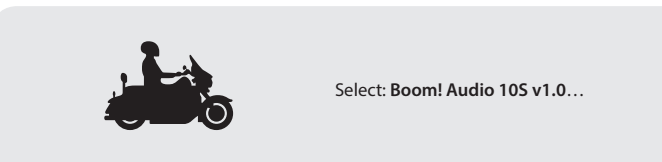
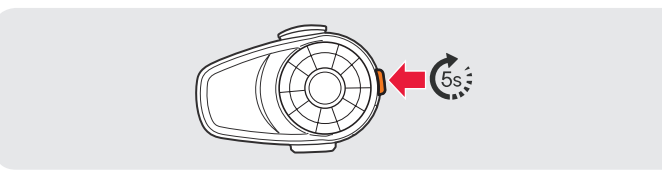
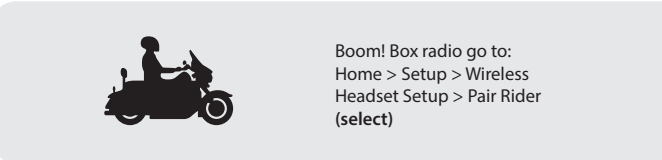
Or, press and hold the Jog Dial and the Phone Button for 3 more seconds when the headset turns on. You will hear a triple beep and a voice prompt.

Charging the Battery

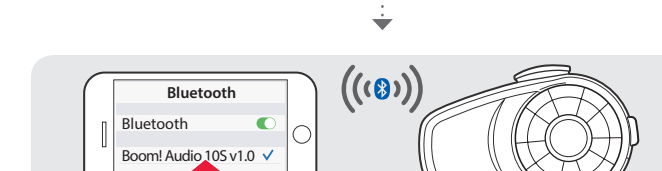
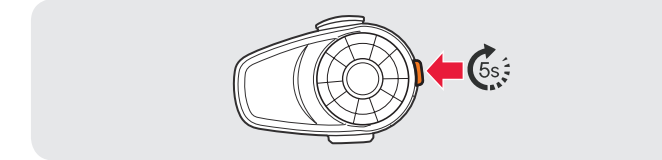


PAIRING

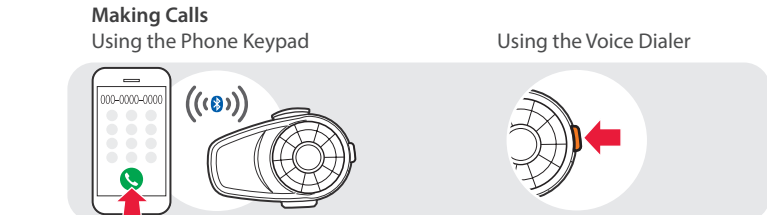
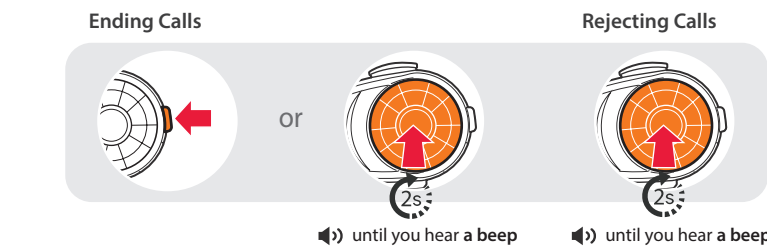
Pairing with WHIM



Pairing with Mobile Devices - Phone, Music



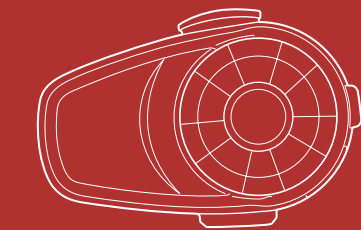
Using Phone Features





Boom!™ Audio 10S Quick Start Guide

Motorcycle Bluetooth®
Communication System

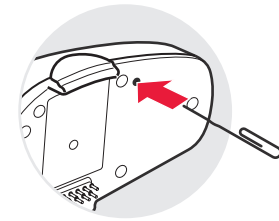


You can download the full version of the manual and view other Harley-davidson products at the website: oem.sena.com/harley-davidson.

TROUBLESHOOTING


Factory Reset

If you want to restore the Boom! Audio 10S to factory default settings, press and hold the **Phone Button** for 10 seconds. Tap the **Jog Dial**. The headset automatically restores the default settings and turns off.



Fault Reset

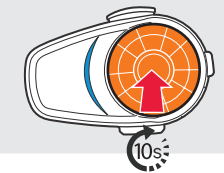
If the Boom! Audio 10S is not working properly for any reason, push the pin-hole reset button located on the back of the headset.



Customer Support: support.sena.com
E-mail: support@sena.com

SETTING

Method1) Using the headset



You will hear a **double beep sound**.
🔊 "Configuration menu"

Method2) Using the Boom Audio Bluetooth Device Manager

Connect the headset to your computer via a USB cable. Launch the Boom Audio Bluetooth Device Manager and click **DEVICE SETTING** to configure the headset settings.

For details about downloading the Boom Audio Bluetooth Device Manager, refer to the leaflet included in the package.

Method3) Using the Sena Smartphone App

1. On your smartphone, download the Sena Smartphone App for Android or iPhone from Google Play or App Store. Refer to oem.sena.com/harley-davidson for more details.
2. Pair your smartphone with the headset.
3. Run the Sena Smartphone App. Swipe the screen to the right and tap **Setting** to configure the headset settings.

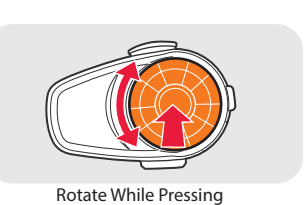
RADIO

Turning On/Off the FM Radio



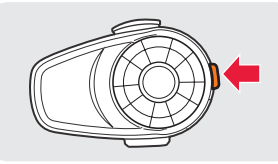
You will hear a **double beep sound**.
🔊 "FM on" or "FM off"

Seeking Stations



Rotate While Pressing

Listening to Preset Stations



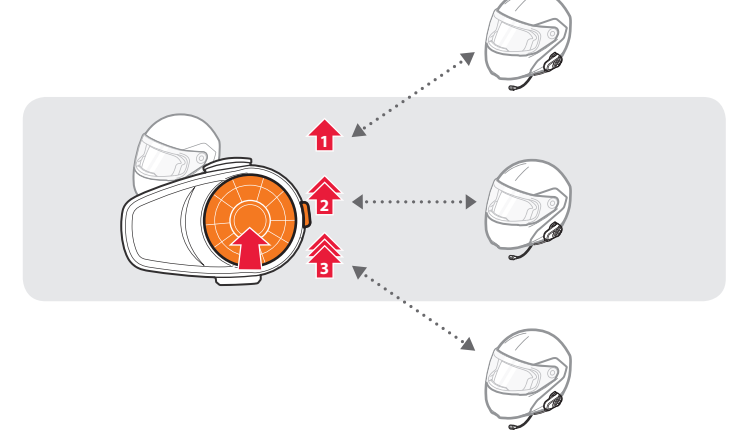
Saving or Deleting Stations

To Save: 📶 "Preset (#)" → 📶 "(#)" → 📶 "Save preset (#)"

To Delete: 📶 "(#)" → 📶 "Delete preset (#)"

INTERCOM

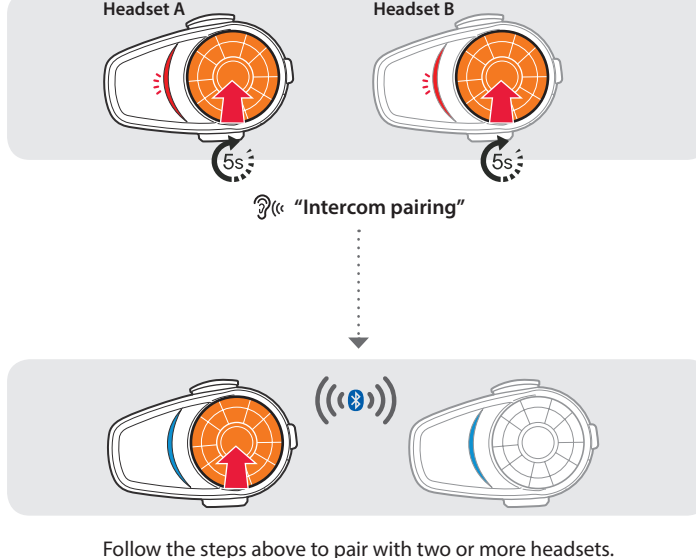
Using the Intercom



INTERCOM

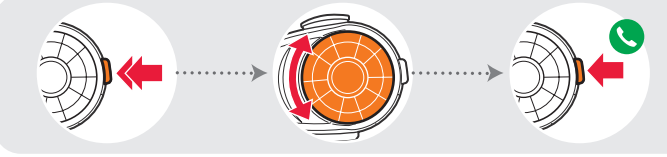
Pairing with Other Headsets

Headset A Headset B



Follow the steps above to pair with two or more headsets.

Using the Speed Dial



You will hear a beep.
🔊 "Speed dial"

Voice Menu

- Last number redial
- Speed dial 1
- Speed dial 2
- Speed dial 3
- Cancel

Listening to Music

After Pairing...

Playing or Pausing Music: Press phone button until you hear a double beep.

Tracking Forward or Backward: Rotate While Pressing.